



UNIVERSITY OF LEEDS

This is a repository copy of *Flexural creep of steel fiber reinforced concrete in the cracked state*.

White Rose Research Online URL for this paper:
<http://eprints.whiterose.ac.uk/91897/>

Version: Accepted Version

Article:

Garcia-Taengua, E, Arango, S, Marti-Vargas, JR et al. (1 more author) (2014) Flexural creep of steel fiber reinforced concrete in the cracked state. *Construction and Building Materials*, 65. pp. 321-329. ISSN 0950-0618

<https://doi.org/10.1016/j.conbuildmat.2014.04.139>

© 2014, Elsevier. Licensed under the Creative Commons Attribution-NonCommercial-NoDerivatives 4.0 International
<http://creativecommons.org/licenses/by-nc-nd/4.0/>

Reuse

Unless indicated otherwise, fulltext items are protected by copyright with all rights reserved. The copyright exception in section 29 of the Copyright, Designs and Patents Act 1988 allows the making of a single copy solely for the purpose of non-commercial research or private study within the limits of fair dealing. The publisher or other rights-holder may allow further reproduction and re-use of this version - refer to the White Rose Research Online record for this item. Where records identify the publisher as the copyright holder, users can verify any specific terms of use on the publisher's website.

Takedown

If you consider content in White Rose Research Online to be in breach of UK law, please notify us by emailing eprints@whiterose.ac.uk including the URL of the record and the reason for the withdrawal request.



eprints@whiterose.ac.uk
<https://eprints.whiterose.ac.uk/>

LIST OF FIGURES

Fig. 1 General testing procedure

Fig. 2 Creep test setup

Fig. 3 Idealized plot obtained after complete testing of a specimen

Fig. 4 Steps followed to analyze experimental results

Fig. 5 Box-and-whisker plot showing the effect of position on COR(0-14)

Fig. 6 Box-and-whisker plot showing the effect of position on $\varphi_0(90)$

Fig. 7 Scatterplot showing the effect of load ratio on $\varphi_0(90)$

Fig. 8 Box-and-whisker plot showing the effect of fiber slenderness on COR(30-90)

Fig. 9 Box-and-whisker plot showing the effect of fiber slenderness on $\varphi_0(90)$

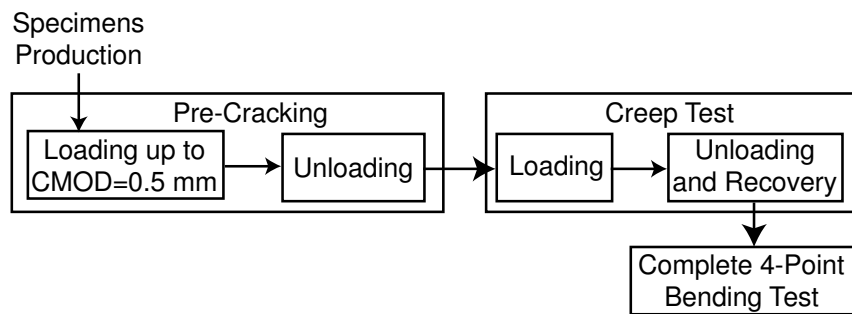


Fig. 1 General testing procedure

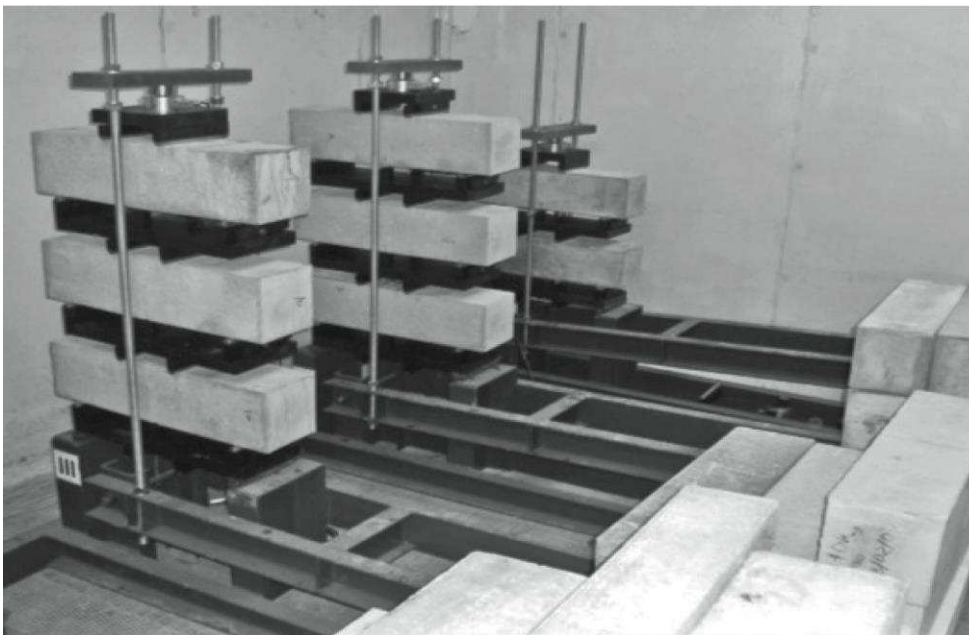
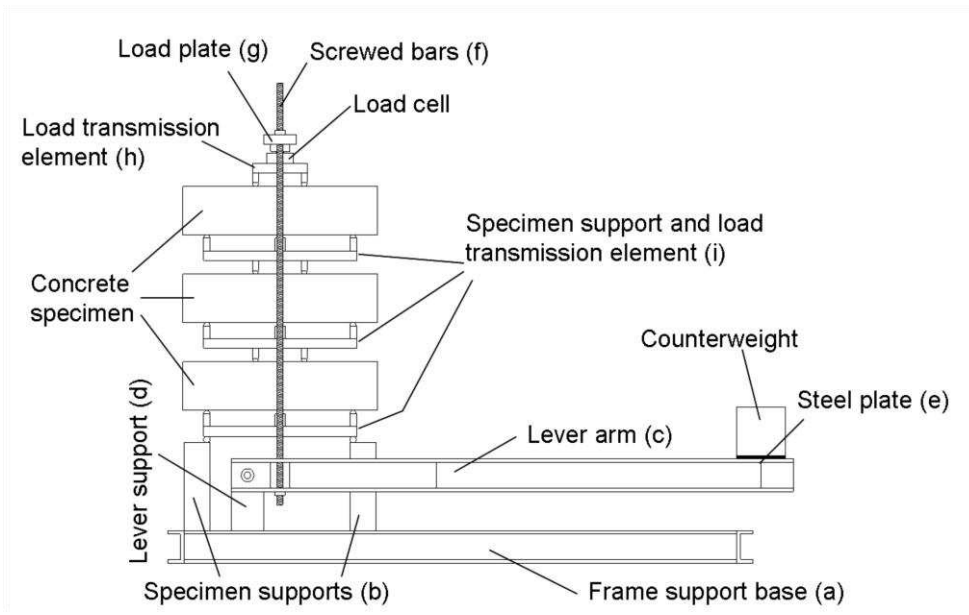


Fig. 2 Creep test setup

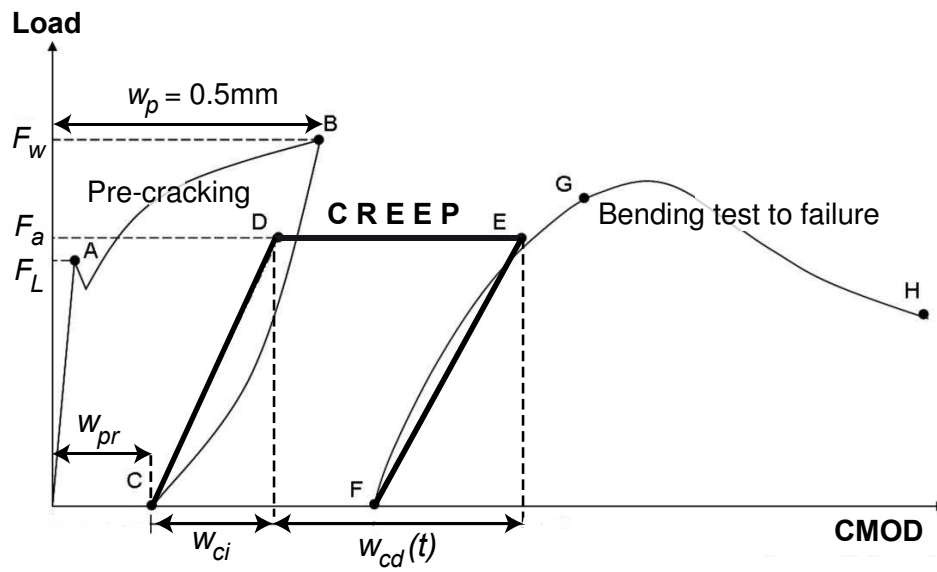


Fig. 3 Idealized plot obtained after complete testing of a specimen

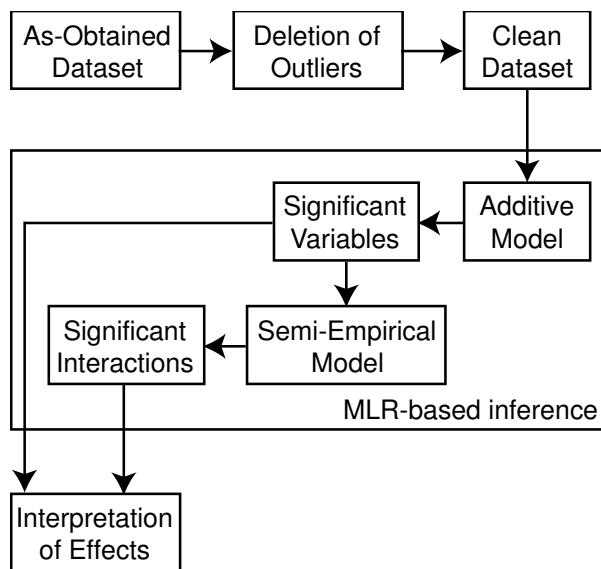


Fig. 4 Steps followed to analyze experimental results

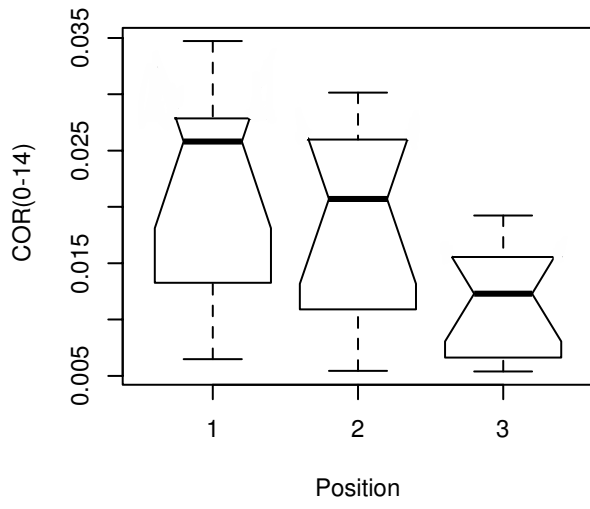


Fig. 5 Box-and-whisker plot showing the effect of position on COR(0-14)

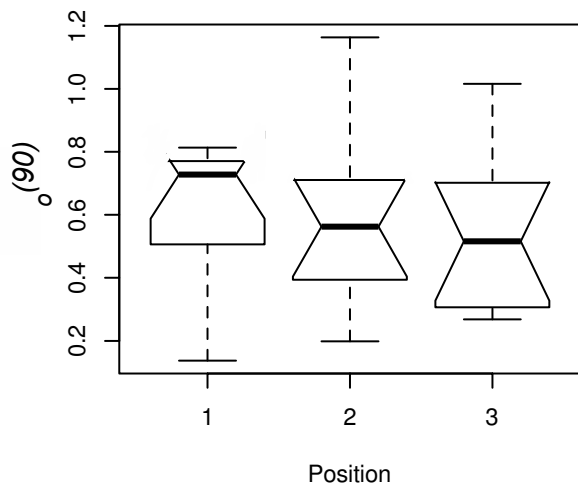


Fig. 6 Box-and-whisker plot showing the effect of position on $\phi_0(90)$

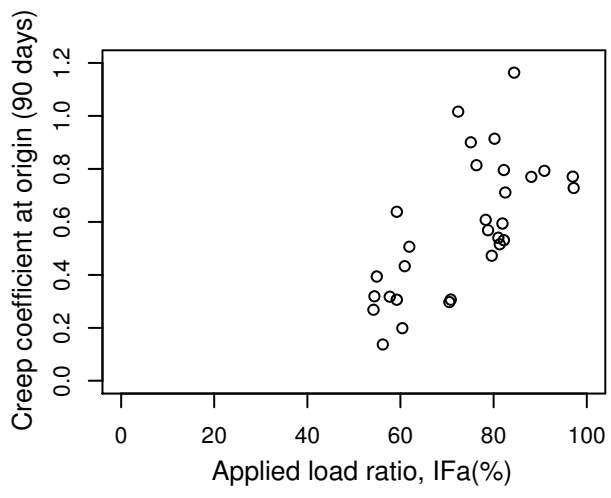


Fig. 7 Scatterplot showing the effect of load ratio on $\varphi_0(90)$

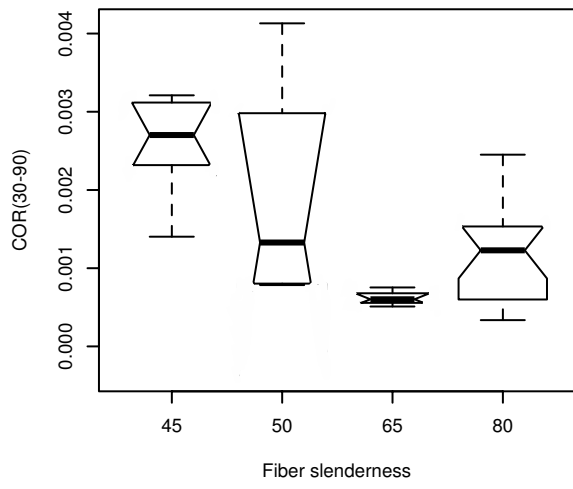


Fig. 8 Box-and-whisker plot showing the effect of fiber slenderness on COR(30-90)

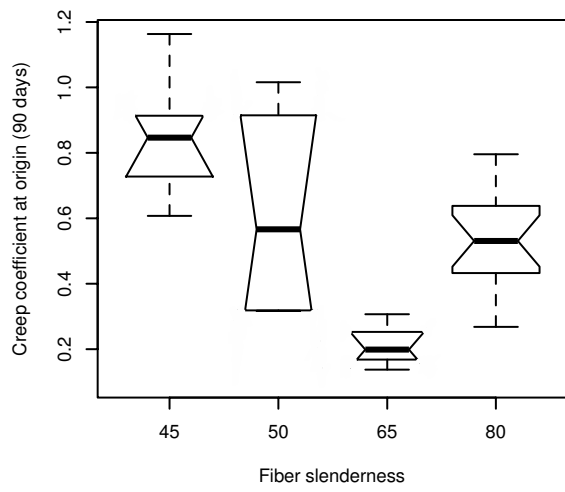


Fig. 9 Box-and-whisker plot showing the effect of fiber slenderness on $\phi_0(90)$