



UNIVERSITY OF LEEDS

This is a repository copy of *Ice Nucleation Properties of Oxidized Carbon Nanomaterials*.

White Rose Research Online URL for this paper:  
<http://eprints.whiterose.ac.uk/88740/>

Version: Accepted Version

---

**Article:**

Whale, TF, Rosillo-Lopez, M, Murray, BJ et al. (1 more author) (2015) Ice Nucleation Properties of Oxidized Carbon Nanomaterials. *Journal of Physical Chemistry Letters*, 6. 3012 - 3016. ISSN 1948-7185

<https://doi.org/10.1021/acs.jpcclett.5b01096>

---

**Reuse**

Unless indicated otherwise, fulltext items are protected by copyright with all rights reserved. The copyright exception in section 29 of the Copyright, Designs and Patents Act 1988 allows the making of a single copy solely for the purpose of non-commercial research or private study within the limits of fair dealing. The publisher or other rights-holder may allow further reproduction and re-use of this version - refer to the White Rose Research Online record for this item. Where records identify the publisher as the copyright holder, users can verify any specific terms of use on the publisher's website.

**Takedown**

If you consider content in White Rose Research Online to be in breach of UK law, please notify us by emailing [eprints@whiterose.ac.uk](mailto:eprints@whiterose.ac.uk) including the URL of the record and the reason for the withdrawal request.



[eprints@whiterose.ac.uk](mailto:eprints@whiterose.ac.uk)  
<https://eprints.whiterose.ac.uk/>

# Ice Nucleation Properties of Oxidized Carbon Nanomaterials

Thomas F. Whale,<sup>a\*</sup> Martin Rosillo-Lopez,<sup>b</sup> Benjamin J. Murray,<sup>a</sup> Christoph G. Salzmann<sup>b</sup>

<sup>a</sup> Institute for Climate and Atmospheric Science, School of Earth and Environment, University of Leeds, Woodhouse Lane, Leeds LS2 9JT, UK

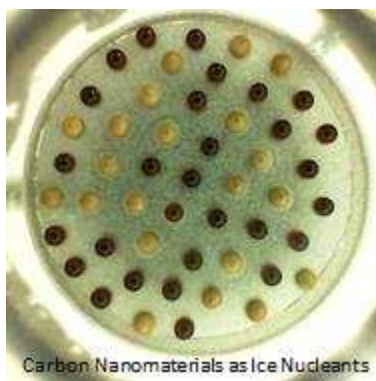
<sup>b</sup> Department of Chemistry, University College London, 20 Gordon Street, London WC1H 0AJ, UK

\* t.f.whale@leeds.ac.uk

## ABSTRACT

Heterogeneous ice nucleation is an important process in many fields, particularly atmospheric science, but is still poorly understood. All known inorganic ice nucleating particles are relatively large in size and tend to be hydrophilic. Hence it is not obvious that carbon nanomaterials should nucleate ice. However, in this paper we show that four different readily water-dispersible carbon nanomaterials are capable of nucleating ice. The tested materials were carboxylated graphene nanoflakes, graphene oxide, oxidized single walled carbon nanotubes and oxidized multiwalled carbon nanotubes. The carboxylated graphene nanoflakes have a diameter of ~30 nm and are among the smallest entities observed so far to nucleate ice. Overall, carbon nanotubes were found to nucleate ice more efficiently than flat graphene species, and less oxidized materials nucleated ice more efficiently than more oxidized species. These well-defined carbon nanomaterials may pave the way to bridging the gap between experimental and computational studies of ice nucleation.

## TOC GRAPHICS



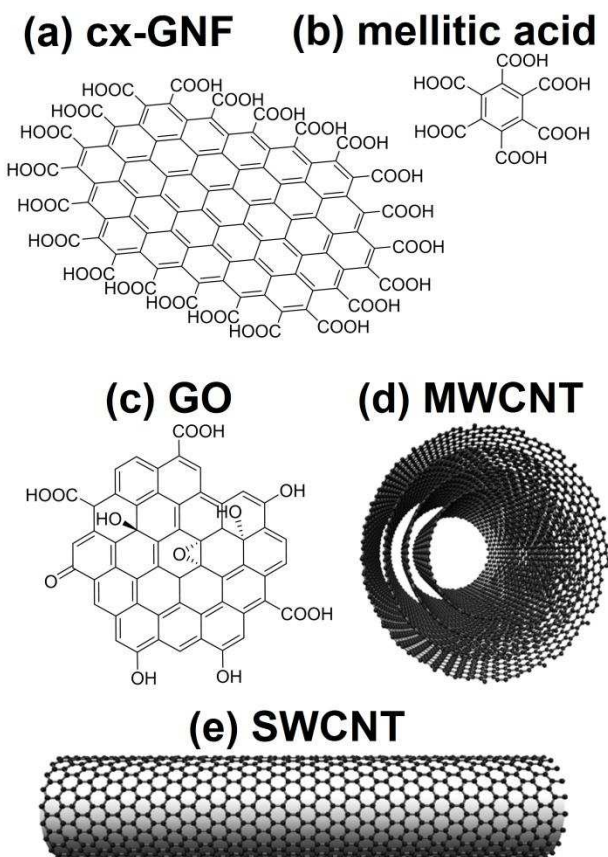
**KEYWORDS** ice, ice nucleation, carbon nanomaterials, atmospheric aerosol

Freezing of liquid water to ice I must be initiated by an ice nucleation event. In many situations this event is induced by a heterogeneous ice nucleating particle (INP). Ice nucleation is an important process for understanding of atmospheric processes<sup>1-3</sup> and also has relevance in other fields such as the cryopreservation of biological samples,<sup>4</sup> freeze drying of pharmaceuticals<sup>5</sup> and other substances<sup>6</sup> and freezing of foodstuffs.<sup>7</sup> Much effort has been devoted to the quantification of the efficiencies of heterogeneous ice nucleants of potential atmospheric relevance. As such the ice nucleating efficiencies of various mineral dusts, biological entities, volcanic ashes and carbonaceous combustion aerosols<sup>8-9</sup> have been measured using a wide range of techniques.<sup>1-2</sup>

It is often assumed that INPs tend to be relatively ‘large’ in size.<sup>3</sup> Indeed, the concentration of atmospheric INP is correlated with the concentration of particles larger than 0.5  $\mu\text{m}$  in diameter.<sup>10</sup> However, it has been found that nanoscale, readily dispersible biological particles that are shed from both pollen particles and fungi in water can also nucleate ice efficiently<sup>11-13</sup> and that small particles of polyvinyl alcohol can nucleate ice.<sup>14</sup> Of late, there has been a great deal of interest in the synthesis and characterization of carbon nanomaterials. The ice nucleation activity of these species has not been examined to date.

Here, we have synthesized 4 different carbon nanomaterials and determined their ice nucleating efficiencies. These are carboxylated graphene nanoflakes (*cx*-GNFs) and graphene oxide (GO) as well as oxidized multiwall (o-MWCNTS) and single wall carbon nanotubes (o-SWCNTs). Representative structures for these species are shown in Fig. 1. The oxygen / carbon ratios for these materials were determined by X-ray photoelectron spectroscopy (XPS). The *cx*-GNFs are small graphene sheets with an average lateral diameter of  $\sim 30$  nm.<sup>15</sup> The edges of the flakes are decorated with carboxylic acid groups. They contain 66.3% carbon and 33.7% oxygen. GO consists of much larger sheets of carbon, average diameter 1  $\mu\text{m}$ . The structure has a wider

range of functional groups than that of the *cx*-GNFs with alcohol and epoxide groups present as well as carboxylic acids.<sup>16</sup> The face of the GO sheets is oxidized as well as the edges. The GO sample contains 72.0% carbon and 28.0% oxygen. MWCNTs are needle-like tubes of carbon and consist of multiple single layers of carbon wrapped concentrically. Our oxidized material contains 82.2% carbon and 17.8% oxygen. SWCNTs are structurally similar but consist of a single layer of carbon only. After chemical oxidation of the SWCNTs we find 86.2% carbon and 13.8% oxygen according to XPS. We also present freezing data for a solution of mellitic acid, a molecular species structurally analogous to *cx*-GNFs, consisting of a single benzene ring with six carboxylic acid groups.

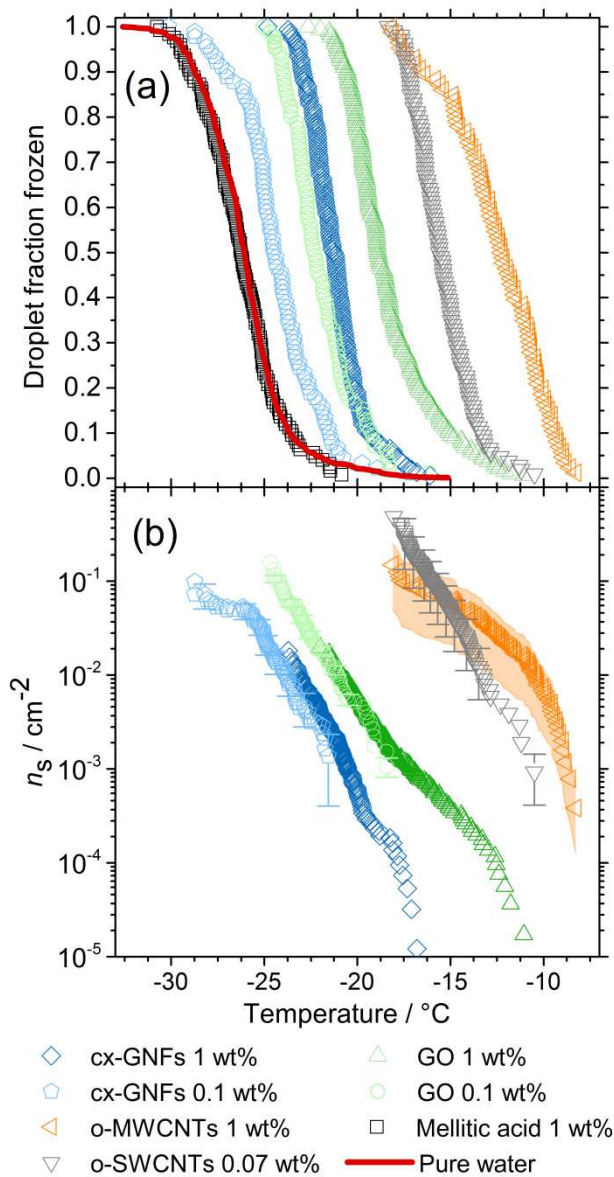


**Figure 1.** Chemical structures of the various of carbon nanomaterials tested for their ice nucleation activity. (a) Small carboxylated graphene nanoflake (*cx*-GNF), (b) mellitic acid, (c)

graphene oxide (GO), (d) multiwalled carbon nanotube (MWCNT) and (e) single walled carbon nanotube (SWCNT). GO sheets have an average lateral diameter of 1  $\mu\text{m}$  while the GNFs have an average lateral diameter of 30 nm.<sup>15</sup>

These materials were chosen for this study because their oxidized nature allows them to readily disperse in water. Attempts to conduct experiments with carbonized *cx*-GNFs, for example, proved impossible as they did not disperse in water. The oxidized carbon nanomaterials, apart from the *o*-SWCNTs, all disperse readily in water with stirring. No more than 0.07 wt% of the *o*-SWCNTs could be dispersed. The 1 wt% and 0.1 wt% dispersions of *cx*-GNFs are very stable and were not observed to settle even after several months. Suspensions of GO, *o*-MWCNTs and *o*-SWCNTs were less stable, and settle over the course of hours. Dispersions of carbon nanomaterials were tested for the ice nucleating activity immediately after preparation.

Ice nucleation experiments were conducted using the  $\mu\text{l}$ -Nucleation by Immersed Particles Instrument ( $\mu\text{l}$ -NIPI).<sup>17</sup> This instrument allows determination of the freezing temperatures of around 50 microlitre droplets of water under constant cooling. Here, a cooling rate of  $1^\circ\text{C min}^{-1}$  has been used. The freezing curve for pure water in Fig. 2(a) consists of 737 separate freezing events from 17 experiments and has been reported previously by Umo et al<sup>18</sup>. The freezing observed in the pure water is unlikely to be induced by homogenous nucleation, which is predicted by classical nucleation theory to occur at temperatures colder than  $-30^\circ\text{C}$  in 1  $\mu\text{l}$  droplets.<sup>19-20</sup> Instead it is likely that the freezing observed is caused by a combination of impurities in the water used and on the silanized glass slide used to support the droplets.



**Figure 2** (a) Droplet fraction frozen against temperature for 1 and 0.1 wt% dispersions of GO and cx-GNFs, a 1 wt% dispersion of o-MWCNTs, a 0.07 wt% dispersion of o-SWCNTs, a 1 wt% solution of mellitic acid and pure water. (b)  $n_s$  values for all tested carbon nanomaterials. The  $n_s$  values reported for the o-MWCNTs assume that they have 9 layers, the average number for the starting material for their synthesis. The shaded area shows the area encompassed by calculating  $n_s$  for the minimum and maximum wall numbers of the starting material.

Experimental uncertainty in  $n_s$  was calculated by propagation of uncertainty from weighing,

droplet size and background subtraction. In many cases uncertainties are too small to show on the plot. Temperature uncertainty is  $\pm 0.4^\circ\text{C}$  in (a) and (b).

Droplets containing *cx*-GNFs, GO, o-MWCNTs and o-SWCNTs all nucleate ice at temperatures warmer than the pure water droplets, as shown in Fig. 2(a). This constitutes the first observations of ice nucleation by these types of materials. In contrast, it can be seen in Fig. 2(a) that mellitic acid does not nucleate ice within the sensitivity of the experimental setup used, with recorded freezing temperatures indistinguishable to those of pure water. This is entirely expected as mellitic acid is a dissolved molecular species so there is no reason to suppose it would interact with water in a way that would encourage ice formation. It is interesting to note that the structurally analogous *cx*-GNFs do nucleate ice well, showing that the increase in size allows interactions with water suitable for encouraging ice nucleation to occur.

To allow comparison between the carbon nanomaterial nucleants these values have been normalized to surface area according to a time independent description of ice nucleation.<sup>21-22</sup> To calculate theoretical  $n_s$  values for the graphene species presented in Fig. 2(b) the total surface area of the *cx*-GNFs and GO was calculated by assuming that all graphene sheets were completely dissociated from each other and using:

$$\frac{n(T)}{N} = 1 - \exp(-n_s(T)\sigma) \quad [1]$$

where  $n_s$  is the cumulative number of surface sites per unit surface area of nucleant that become active on cooling from 273.15 K to a temperature T,  $\sigma$  is the surface of nucleant per droplet and  $\frac{n(T)}{N}$  is the cumulative fraction of droplets frozen.

It can be seen in Fig. 2(a) that GO nucleates ice more efficiently than the *cx*-GNFs per mass of material, and that the o-MWCNTs and o-SWCNTs nucleate ice more efficiently than the flat



species. The carbon nanotubes (CNTs) are similar to each other. The shapes of the  $n_s$  curves for the two CNT species are different however. The curve for the o-MWCNTs flattens at lower temperature, meaning that the number of effective INPs increases less quickly with increasing supersaturation than for the o-SWCNTs. There has been interest in the ordering of water in CNT cavities.<sup>23</sup> It is intriguing to suggest that the interior cavities of the CNTs interact with water in a way that promotes ice nucleation and that this is responsible for the strong nucleation we have observed. Both kinds of CNTs are rather less oxidized than the graphene species. The overall trend is therefore that the less oxidized species nucleate ice more efficiently. The 1 wt% dispersion of *cx*-GNFs has a median nucleation temperature of -21.3°C and an oxygen content of 33.7% while the 1 wt% dispersion o-MWCNTs has a median nucleation temperature of -12.2°C and an oxygen content of 17.8%. We note in this context that XPS is a surface-sensitive technique and the determined atom percentages may therefore not necessarily reflect the bulk composition of the samples but more the composition of the sample at the interface with water.

The *cx*-GNFs in particular are light compared to most other INPs. Their average mass is approximately 325 kDa. In their recent paper Pummer et al.<sup>24</sup> reviewed a range of small INPs. The *cx*-GNFs are comparable in mass to Birch pollen derived ice nucleating macromolecules discovered by Pummer et al<sup>11</sup> and fungal proteins sized by O'Sullivan et al.<sup>13</sup> and somewhat larger than certain polyvinyl alcohols discovered by Ogawa et al<sup>14</sup>, which were shown to nucleate ice at molecular weights as low as 1.7 kDa. All other known INPs are heavier than the *cx*-GNFs.

The approach we have used to calculate  $n_s$  assumes that all possible surface area is in contact with water. It is hard to evaluate how realistic this is for the carbon nanomaterials, hence, the  $n_s$  values reported are most likely lower limits in the case of these nanomaterials. This also means

that comparison with existing measurements of other carbon materials such as soots<sup>8-9</sup> is difficult. It can be seen in Fig. 2(b) that  $n_s$  derived from lower concentrations dispersions of GO and cx-GNF fall on the same line as higher concentrations suggesting that similar surface areas of material are available per mass of material in both concentrations. This indicates that the materials are not aggregated in dispersion since aggregation is concentration dependent. Calculating  $n_s$  for the o-MWCNTs was less straightforward as the precise number of layers in the MWCNTs from which the o-MWCNTs were synthesized is unknown. Manufacturer specifications for the starting material includes maximum and minimum numbers of walls,  $n_s$  values have been calculated using these to provide upper and lower limits as seen in Fig. 2(b). We have assumed that the exterior surface area of the o-MWCNTs is solely responsible for nucleation observed and calculated surface area exposed to water on this basis. The interior surfaces may well play a role, even a dominant one, in the nucleation observed but the assumptions made seem reasonable for comparative purposes.

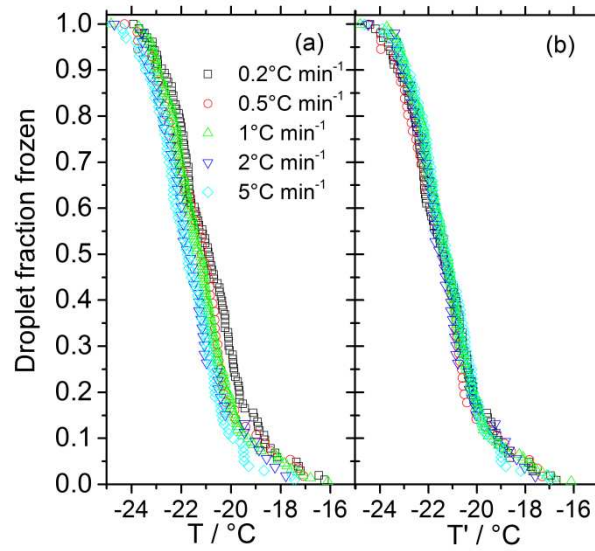
While it is difficult to infer details about the specific mechanism of ice nucleation from droplet freezing experiments some insight into the nature of ice nucleation observed can be derived from its time dependence. The Framework for Reconciling Observable Stochastic Time-dependence (FROST) condenses the key information about time dependence of ice nucleation into a single parameter,  $\lambda$ , which is a nucleant specific parameter that describes the time dependence of the ice nucleation properties (further details are given in the SI).<sup>22</sup> FROST facilitates comparison of different materials through calculation of  $\lambda$  using:

$$T' = T - \frac{1}{\lambda} \left( \ln \frac{1}{r} \right) \quad [2]$$

Where, for a given experiment,  $T'$  is the modified temperature, the freezing temperature that would be expected if an experiment were conducted at a standard rate of  $1^\circ\text{C min}^{-1}$ ,  $T$  is the

measured freezing temperature and  $r$  is the cooling rate in  $^{\circ}\text{C min}^{-1}$ . To calculate  $\lambda$  from multiple fraction frozen curves the difference between calculated  $T'$  values is minimized by varying  $\lambda$  iteratively.

We have cooled cx-GNFs at rates from  $0.2^{\circ}\text{C min}^{-1}$  to  $5^{\circ}\text{C min}^{-1}$ , the results of which are shown in Fig. 3(a), and analyzed the resulting data using FROST.<sup>22</sup> A  $\lambda$  value of  $3.3^{\circ}\text{C}^{-1}$  has been determined and Fig. 3(b) shows the normalized data. This  $\lambda$  value is higher than those of the majority of nucleants evaluated by Herbert et al.<sup>22</sup> and might be regarded as a ‘large’  $\lambda$  value, indicating that ice nucleation by cx-GNFs is relatively insensitive to changes in cooling rate.



**Figure 3** (a) Droplet fraction frozen against temperature for 1 wt% cx-GNFs at 5 different cooling rates. (b) Droplet fraction frozen against modified temperature as defined in eq. 2 for the same experiments. Temperature uncertainty is  $\pm 0.4^{\circ}\text{C}$  in (a) and (b).

The FROST analysis also reveals if there is a strong particle-to-particle variability in ice nucleating ability. If the value  $d\ln(n_s)/dT$ , termed  $\omega$ , is equal to  $\lambda$  then all surfaces of the

nucleant has the same potential to nucleate ice. In contrast, if  $\omega < \lambda$  then some parts of the surface have a greater potential to nucleate ice. For *cx*-GNFs cooled at  $1^\circ\text{C min}^{-1}$  we have determined  $\omega$  to be  $0.83^\circ\text{C}^{-1}$  which is clearly much smaller than  $\lambda$ . This suggests that the nucleation observed may be site specific, meaning that there may be specific sites on the *cx*-GNFs that are responsible for the ice nucleation.<sup>21-22</sup> The precise nature of these sites and the reason for their apparent nucleating activity is unclear. It is known that small monomers such as the water molecule can interact with carboxylic acid groups such as those present on *cx*-GNFs.<sup>25-27</sup> It may be that such site-specific interactions are related to the observed ice nucleation.’

At present there is no case where the mechanism of heterogeneous ice nucleation is well understood. Even the longstanding and elegant lattice matching hypothesis to which the ice nucleating activity of silver iodide is attributed has been questioned.<sup>28-29</sup> Various molecular dynamics simulations have been conducted by a few different groups in order to address this issue.<sup>30-35</sup> This includes several studies looking specifically at carbon species.<sup>36-39</sup> Currently, there is a gap between experimental and computational work into ice nucleation that has proved very difficult to bridge, due to the vast differences in spatial scale and time scale of the systems that can be examined experimentally and computationally.

Recent work by Lupi et al.<sup>38-39</sup> using molecular dynamics simulations to study ice nucleation on carbon surfaces has provided certain qualitative predictions that it might be experimentally accessible. Specifically, they found that flat carbon surfaces without any oxidation or roughness nucleated ice most efficiently. Any oxidation,<sup>38</sup> roughness or curvature<sup>39</sup> was found to decrease the nucleation temperatures observed in the simulations. The result that oxidized carbon surfaces nucleate ice less well than pristine ones is somewhat counterintuitive and in contrast to the commonly stated ‘chemical bonding’ requirement for ice nucleation<sup>3</sup> as it might be expected that

oxidation will offer greater opportunity for water to bond to a surface and so promote water structuring and ice nucleation. Our work here is consistent with the alternative hypothesis that reduced oxidation leads to enhanced ice nucleation efficiency although more species would need to be investigated to establish a statistically significant trend. Also, there are differences in structure and size between the nanomaterials investigated here, as well as extent of oxidation. These differences would need to be closely controlled to generate a firm experimental conclusion as to the effect of oxidation of carbon nanomaterials on ice nucleation efficiency. By thoroughly characterizing relatively simple ice nucleating species it might be possible to conduct practical experiments that can be meaningfully related to computational studies. In general, by investigating closely related nucleants and observing differences in their ice nucleating efficiency it may be possible to infer information about the causes of ice nucleating activity in these samples. Work here might be regarded as a first step in this direction and, now that their capacity to nucleate ice is known, carbon nanomaterials may prove to be a good candidate for further work on building a fundamental understanding of ice nucleation.

## Notes

The authors declare no competing financial interests.

**Supporting Information Available:** Details of the synthesis of the carbon nanomaterials used, XPS analysis of the nanomaterials, the  $\mu$ l-NIPI ice nucleation instrument and the FROST method for analysis of ice nucleation data are available in the supporting information. This material is available free of charge via the Internet <http://pubs.acs.org>.

## ACKNOWLEDGMENTS

We would like to thank Dr. D. O'Sullivan, Dr. R. J. Herbert, Dr. H. C. Price and Dr. T. W. Wilson for useful discussions. BJM and TFW thank the Natural Environment Research Council (NERC, NE/I013466/1; NE/I020059/1; NE/I019057/1) the European Research Council (ERC, 240449 ICE; 632272 IceControl) and the Engineering and Physical Sciences Research Council (EPSRC, EP/M003027/1) for funding. CGS thanks the Royal Society for a University Research Fellowship (UF100144) and the Leverhulme Trust for a Research Grant (RPG-2014-04).

## REFERENCES

- (1) Murray, B. J.; O'Sullivan, D.; Atkinson, J. D.; Webb, M. E. Ice Nucleation by Particles Immersed in Supercooled Cloud Droplets. *Chem. Soc. Rev.* **2012**, *41*, 6519-6554.
- (2) Hoose, C.; Möhler, O. Heterogeneous Ice Nucleation on Atmospheric Aerosols: a Review of Results From Laboratory Experiments. *Atmos. Chem. Phys.* **2012**, *12*, 9817-9854.
- (3) Pruppacher, H. R.; Klett, J. D. *Microphysics of Clouds and Precipitation*. 2nd ed.; Kluwer Academic Publishers, Dordrecht, The Netherlands; 1997.
- (4) Morris, G. J.; Acton, E. Controlled Ice Nucleation in Cryopreservation - a Review. *Cryobiology* **2013**, *66*, 85-92.
- (5) Searles, J. A.; Carpenter, J. F.; Randolph, T. W. The Ice Nucleation Temperature Determines the Primary Drying Rate of Lyophilization for Samples Frozen on a Temperature-Controlled Shelf. *J. Pharm. Sci.* **2001**, *90*, 860-871.
- (6) Aksan, A.; Ragoonanan, V.; Hirschmugl, C. Freezing- and Drying-Induced Micro- and Nano-Heterogeneity in Biological Solutions. In *Biophysical Methods for Biotherapeutics*, John Wiley & Sons, Inc.; Hoboken, NJ, USA, 2014.
- (7) Kiani, H.; Sun, D. W. Water Crystallization and its Importance to Freezing of Foods: A Review. *Trends Food Sci. Technol.* **2011**, *22*, 407-426.
- (8) Diehl, K.; Mitra, S. K. A Laboratory Study of the Effects of a Kerosene-Burner Exhaust on Ice Nucleation and the Evaporation Rate of Ice Crystals. *Atmos. Environ.* **1998**, *32*, 3145-3151.
- (9) Demott, P. J. An Exploratory-Study of Ice Nucleation by Soot Aerosols. *J. App. Meteorol.* **1990**, *29*, 1072-1079.
- (10) DeMott, P. J.; Prenni, A. J.; Liu, X.; Kreidenweis, S. M.; Petters, M. D.; Twohy, C. H.; Richardson, M. S.; Eidhammer, T.; Rogers, D. C. Predicting Global Atmospheric Ice Nuclei Distributions and Their Impacts on Climate. *Proc. Natl. Acad. Sci. USA* **2010**, *107*, 11217-11222.
- (11) Pummer, B. G.; Bauer, H.; Bernardi, J.; Bleicher, S.; Grothe, H. Suspendable Macromolecules are Responsible for Ice Nucleation Activity of Birch and Conifer Pollen. *Atmos. Chem. Phys.* **2012**, *12*, 2541-2550.

- (12) Fröhlich-Nowoisky, J.; Hill, T. C. J.; Pummer, B. G.; Franc, G. D.; Pöschl, U. Ice Nucleation Activity in the Widespread Soil Fungus *Mortierella alpina*. *Biogeosciences Discuss.* **2014**, *11*, 12697-12731.
- (13) O'Sullivan, D.; Murray, B. J.; Ross, J. F.; Whale, T. F.; Price, H. C.; Atkinson, J. D.; Umo, N. S.; Webb, M. E. The Relevance of Nanoscale Biological Fragments for Ice Nucleation in Clouds. *Sci. Rep.* **2015**, *5*, 8082
- (14) Ogawa, S.; Koga, M.; Osanai, S. Anomalous Ice Nucleation Behavior in Aqueous Polyvinyl Alcohol Solutions. *Chem. Phys. Lett.* **2009**, *480*, 86-89.
- (15) Salzmann, C. G.; Nicolosi, V.; Green, M. L. Edge-carboxylated Graphene Nanoflakes from Nitric Acid Oxidised Arc-discharge Material. *J. Mater. Chem.* **2010**, *20*, 314-319.
- (16) He, H.; Riedl, T.; Lerf, A.; Klinowski, J. Solid-State NMR Studies of the Structure of Graphite Oxide. *J. Phys. Chem.* **1996**, *100*, 19954-19958.
- (17) Whale, T. F.; Murray, B. J.; O'Sullivan, D.; Wilson, T. W.; Umo, N. S.; Baustian, K. J.; Atkinson, J. D.; Workneh, D. A.; Morris, G. J. A Technique for Quantifying Heterogeneous Ice Nucleation in Microlitre Supercooled Water Droplets. *Atmos. Meas. Tech.* **2015**, *8*, 2437-2447.
- (18) Umo, N. S.; Murray, B. J.; Baeza-Romero, M. T.; Jones, J. M.; Lea-Langton, A. R.; Malkin, T. L.; O'Sullivan, D.; Neve, L.; Plane, J. M. C.; Williams, A. Ice Nucleation by Combustion Ash Particles at Conditions Relevant to Mixed-phase Clouds. *Atmos. Chem. Phys.* **2015**, *15*, 5195-5210.
- (19) Riechers, B.; Wittbracht, F.; Hütten, A.; Koop, T. The Homogeneous Ice Nucleation Rate of Water Droplets Produced in a Microfluidic Device and the Role of Temperature Uncertainty. *Phys. Chem. Chem. Phys.* **2013**, *15*, 5873-5887.
- (20) Murray, B. J.; Broadley, S. L.; Wilson, T. W.; Bull, S. J.; Wills, R. H.; Christenson, H. K.; Murray, E. J. Kinetics of the Homogeneous Freezing of Water. *Phys. Chem. Chem. Phys.* **2010**, *12*, 10380-7.
- (21) Vali, G. Interpretation of Freezing Nucleation Experiments: Singular and Stochastic Sites and Surfaces. *Atmos. Chem. Phys.* **2014**, *14*, 5271-5294.
- (22) Herbert, R. J.; Murray, B. J.; Whale, T. F.; Dobbie, S. J.; Atkinson, J. D. Representing Time-Dependent Freezing Behaviour in Immersion Mode Ice Nucleation. *Atmos. Chem. Phys.* **2014**, *14*, 8501-8520.
- (23) Koga, K.; Gao, G. T.; Tanaka, H.; Zeng, X. C. Formation of Ordered Ice Nanotubes Inside Carbon Nanotubes. *Nature* **2001**, *412*, 802-805.
- (24) Pummer, B. G.; Budke, C.; Augustin-Bauditz, S.; Niedermeier, D.; Felgitsch, L.; Kampf, C. J.; Huber, R. G.; Liedl, K. R.; Loerting, T.; Moschen, T.; Schauerl, M. et al. Ice Nucleation by Water-Soluble Macromolecules. *Atmos. Chem. Phys.* **2015**, *15*, 4077-4091.
- (25) Cheng, J.; Soetjijto, C.; Hoffmann, M. R.; Colussi, A. J. Confocal Fluorescence Microscopy of the Morphology and Composition of Interstitial Fluids in Freezing Electrolyte Solutions. *J. Phys. Chem. Lett.* **2010**, *1*, 374-378.
- (26) Guzmán, M. I.; Hildebrandt, L.; Colussi, A. J.; Hoffmann, M. R. Cooperative Hydration of Pyruvic Acid in Ice. *J. Am. Chem. Soc.* **2006**, *128*, 10621-10624.
- (27) Guzmán, M. I.; Colussi, A. J.; Hoffmann, M. R. Photogeneration of Distant Radical Pairs in Aqueous Pyruvic Acid Glasses. *J. Phys. Chem. A* **2006**, *110*, 931-935.
- (28) Finnegan, W. G.; Chai, S. K. A New Hypothesis for the Mechanism of ice Nucleation on Wetted AgI and AgI Center Dot AgCl Particulate Aerosols. *J. Atmos. Sci.* **2003**, *60*, 1723-1731.

- (29) Massey, A.; McBride, F.; Darling, G. R.; Nakamura, M.; Hodgson, A. The Role of Lattice Parameter in Water Adsorption and Wetting of a Solid Surface. *Phys. Chem. Chem. Phys.* **2014**, *16*, 24018-24025.
- (30) Hu, X. L.; Michaelides, A. Ice Formation on Kaolinite: Lattice Match or Amphoterism? *Surf. Sci.* **2007**, *601*, 5378-5381.
- (31) Fraux, G.; Doye, J. P. K. Note: Heterogeneous Ice Nucleation on Silver-Iodide-Like Surfaces. *J. Chem. Phys.* **2014**, *141*.
- (32) Reinhardt, A.; Doye, J. P. K. Effects of Surface Interactions on Heterogeneous Ice Nucleation for a Monatomic Water Model. *J. Chem. Phys.* **2014**, *141*, 084501.
- (33) Cox, S. J.; Raza, Z.; Kathmann, S. M.; Slater, B.; Michaelides, A. The Microscopic Features of Heterogeneous Ice Nucleation May Affect the Macroscopic Morphology of Atmospheric Ice Crystals. *Faraday Discuss.* **2013**, *167*, 389-403.
- (34) Cox, S. J.; Kathmann, S. M.; Purton, J. A.; Gillan, M. J.; Michaelides, A. Non-hexagonal Ice at Hexagonal Surfaces: the Role of Lattice Mismatch. *Phys. Chem. Chem. Phys.* **2012**, *14*, 7944-7949.
- (35) Cox, S. J.; Kathmann, S. M.; Slater, B.; Michaelides, A. Molecular Simulations of Heterogeneous Ice Nucleation. I. Controlling Ice Nucleation Through Surface Hydrophilicity. *J. Chem. Phys.* **2015**, *142*, 184704.
- (36) Cox, S. J.; Kathmann, S. M.; Slater, B.; Michaelides, A. Molecular Simulations of Heterogeneous Ice Nucleation. II. Peeling Back the Layers. *J. Chem. Phys.* **2015**, *142*, 184705.
- (37) Cabriolu, R.; Li, T. Ice Nucleation on Carbon Surface Supports the Classical Theory for Heterogeneous Nucleation. *Phys. Rev. E: Stat. Phys., Plasmas, Fluids*, **2015**, *91*, 052402.
- (38) Lupi, L.; Molinero, V. Does Hydrophilicity of Carbon Particles Improve Their Ice Nucleation Ability? *J. Phys. Chem. A* **2014**, *118*, 7330-7337.
- (39) Lupi, L.; Hudait, A.; Molinero, V. Heterogeneous Nucleation of Ice on Carbon Surfaces. *J. Am. Chem. Soc.* **2014**, *136*, 3156-3164.