



This is a repository copy of *Biodegradability of organic matter associated with sewer sediments during first flush*.

White Rose Research Online URL for this paper:
<http://eprints.whiterose.ac.uk/8728/>

Article:

Sakrabani, R., Vollertsen, J., Ashley, R.M. et al. (1 more author) (2009) Biodegradability of organic matter associated with sewer sediments during first flush. *Science of the Total Environment*, 407 (8). pp. 2989-2995. ISSN 0048-9697

<https://doi.org/10.1016/j.scitotenv.2009.01.008>

Reuse

Unless indicated otherwise, fulltext items are protected by copyright with all rights reserved. The copyright exception in section 29 of the Copyright, Designs and Patents Act 1988 allows the making of a single copy solely for the purpose of non-commercial research or private study within the limits of fair dealing. The publisher or other rights-holder may allow further reproduction and re-use of this version - refer to the White Rose Research Online record for this item. Where records identify the publisher as the copyright holder, users can verify any specific terms of use on the publisher's website.

Takedown

If you consider content in White Rose Research Online to be in breach of UK law, please notify us by emailing eprints@whiterose.ac.uk including the URL of the record and the reason for the withdrawal request.



eprints@whiterose.ac.uk
<https://eprints.whiterose.ac.uk/>

promoting access to White Rose research papers



Universities of Leeds, Sheffield and York
<http://eprints.whiterose.ac.uk/>

This is an author produced version of a paper published in **Science of the Total Environment**.

White Rose Research Online URL for this paper, including the main text of the work:

<http://eprints.whiterose.ac.uk/8728/>

Tables and Figures below

Published paper

Sakrabani, R., Vollertsen, J., Ashley, R.M. and Hvitved-Jacobsen, T. (2009) *Biodegradability of organic matter associated with sewer sediments during first flush*. *Science of the Total Environment*, 407 (8). pp. 2989-2995.

<http://dx.doi.org/10.1016/j.scitotenv.2009.01.008>

Tables Caption

Table 1: Matrix Formulation of the Aerobic Microbial Transformations of Wastewater Organic Matter in an OUR Batch Experiment. The Formulation Shown Includes Two Fractions of Hydrolysable Substrate (Vollertsen, 1999)

Table 2 : Variation in Y_H values for various storm events

Table 3: Variation in q_m and μ_H values for various storm events

Table 4: Composition of wastewater for the various storm events

Table 1: Matrix Formulation of the Aerobic Microbial Transformations of Wastewater Organic Matter in an OUR Batch Experiment. The Formulation Shown Includes Two Fractions of Hydrolysable Substrate (Vollertsen, 1999)

Component j		1	2	3	5	6	
i	Process	S_S	$X_{S,fast}$	$X_{S,slow}$	X_B	$-S_O$	Process rate
1	Aerobic growth	$\frac{-1}{Y_H}$			1	$\frac{1-Y_H}{Y_H}$	$\mu_H \frac{S_S}{K_S + S_S} X_B$
2	Maintenance energy requirement	-1			-1*	1	$q_m X_B$
3	Hydrolysis, fast	1	-1				$k_{h,fast} \frac{X_{S,fast}/X_B}{K_{X,fast} + X_{S,fast}/X_B} X_B$
4	Hydrolysis, slow	1		-1			$k_{h,slow} \frac{X_{S,slow}/X_B}{K_{X,slow} + X_{S,slow}/X_B} X_B$

*if S_S is insufficient, the remaining substrate for maintenance energy requirement is supplied by endogenous respiration

Table 2 : Variation in Y_H values for various storm events

Date	07/09/01	15/09/01	21/09/01	04/11/01	Std Deviation
Time, min	Y_H , g COD/g COD	Y_H , g COD/g COD	Y_H , g COD/ g COD	Y_H , g COD/g COD	
0 – 10	0.83	0.94	0.78	0.55	0.164
10 – 20	0.76	0.89	0.75	0.33	0.243
20 – 30	0.7	0.85	0.77	0.68	0.077
30 – 40	-	-	-	-	-

Table 4: Composition of wastewater for the various storm events

Date	07/09/01				
Time, min	S_s , g COD/m ³	X_B , g COD/m ³	X_{S1} , g COD/m ³	X_{S2} , g COD/m ³	COD total
0 – 10	47.06	2.13	90.88	47.93	188
10 – 20	6.25	1.53	2.92	131.3	142
20 – 30	4.67	1.21	4.67	63.45	74
30 – 40	-	-	-	-	45
Date	15/09/01				
Time, min	S_s , g COD/m ³	X_B , g COD/m ³	X_{S1} , g COD/m ³	X_{S2} , g COD/m ³	COD total
0 – 10	100	12.01	666.66	50.3	829
10 – 20	29.09	6.83	144.08	293	473
20 – 30	8	2.96	73.167	11.87	96
30 – 40	-	-	-	-	113
Date	21/09/01				
Time, min	S_s , g COD/m ³	X_B , g COD/m ³	X_{S1} , g COD/m ³	X_{S2} , g COD/m ³	COD total
0 – 10	25.45	5.02	77.27	826	933
10 – 20	18	1.46	23.4	587	630
20 – 30	15.78	1.72	8.78	25.72	52
30 – 40	-	-	-	-	19
Date	04/11/01				
Time, min	S_s , g COD/m ³	X_B , g COD/m ³	X_{S1} , g COD/m ³	X_{S2} , g COD/m ³	COD total
0 – 10	3.11	0.94	1.33	48.86	84
10 – 20	4.25	0.36	9.7	337.7	352
20 – 30	23.44	0.2	11.5	511.6	517
30 – 40	-	-	-	-	415

Figure Captions

Figure 1: Experimental set up at the Frejlev Monitoring Station, Denmark

Figure 2: Concept for characterisation of wastewater organic matter applying aerobic heterotrophic transformations of wastewater (Vollersten & Hvitved-Jacobsen, 1998)

Figure 3: Various information obtained from an OUR curve

Figure 4: OUR profile during 4 storm events at Frejlev, Denmark for (a) 07-09-2001 (b) 15-09-2001 (c) 21-09-2001 (d) 04-11-2001

Figure 5: OUR profile during 3 storm events at Frejlev, Denmark (a) 01-02-1999 (b) 15-02-1999 (c) 24-02-1999

Figure 6: Variation of Easily biodegradable substrate with TSS and Total COD during storm events at Frejlev, Denmark (a) 07/09/01 (b) 15/09/01 (c) 21/09/01 (d) 04/11/01

Figure 7: Variation of Easily biodegradable substrate with TSS and Total COD during storm events at Frejlev, Denmark (a) 03/02/99 (b) 15/02/99 (c) 25/02/99

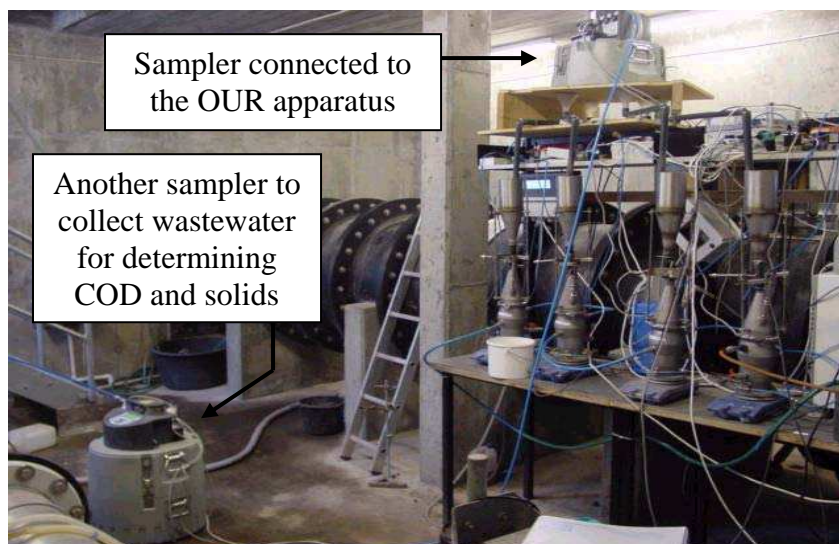


Figure 1 : Experimental set up at the Frejlev Monitoring Station, Denmark

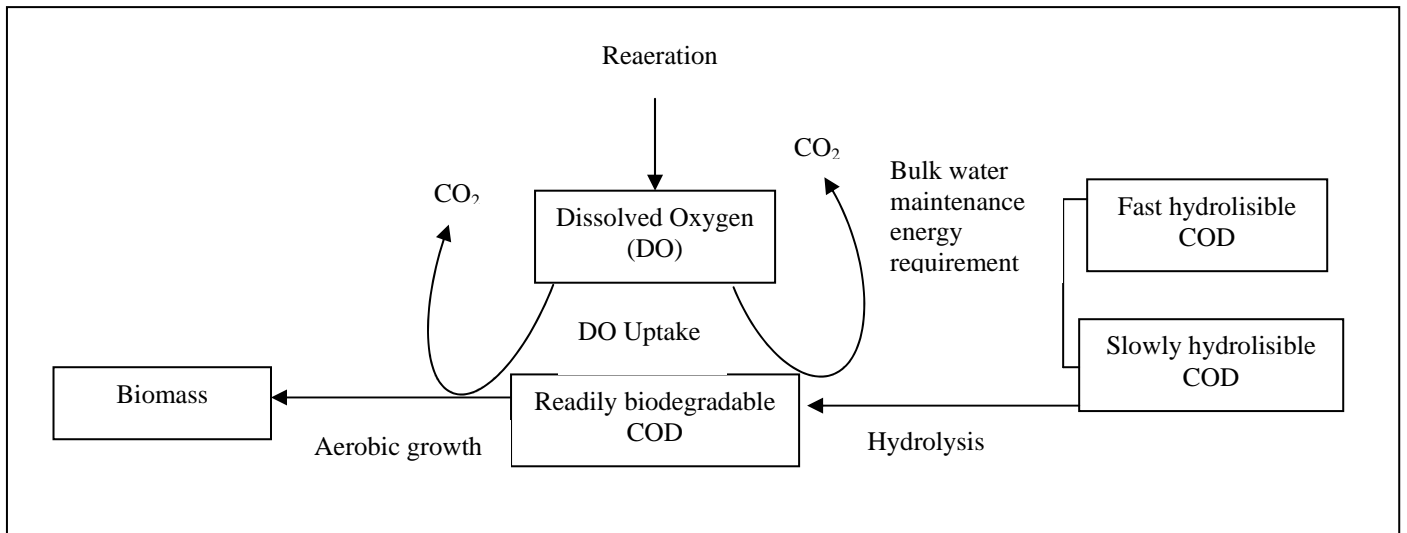


Figure 2 : Concept for characterisation of wastewater organic matter applying aerobic heterotrophic transformations of wastewater (Vollersten & Hvitved-Jacobsen, 1998)

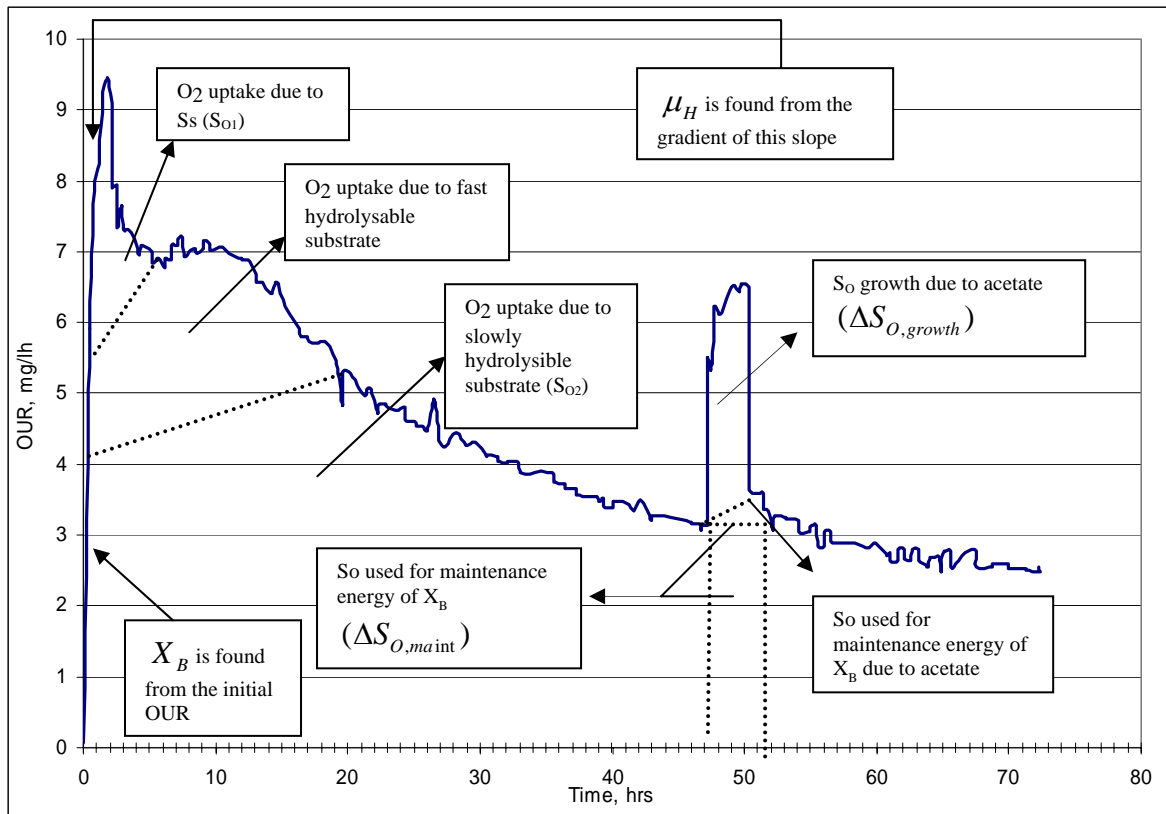


Figure 3 : Various information obtained from an OUR curve

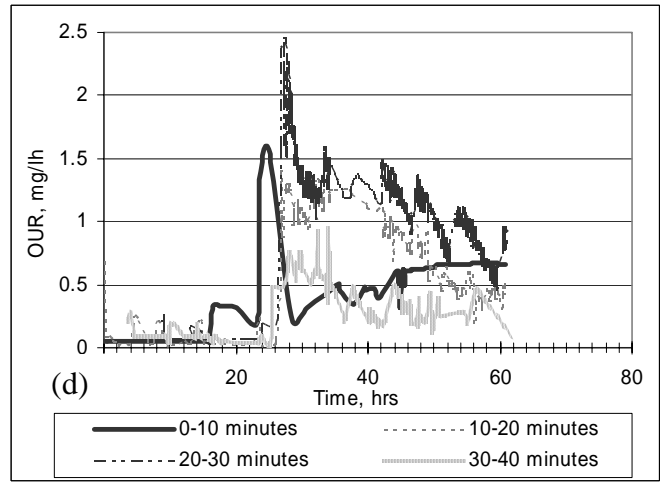
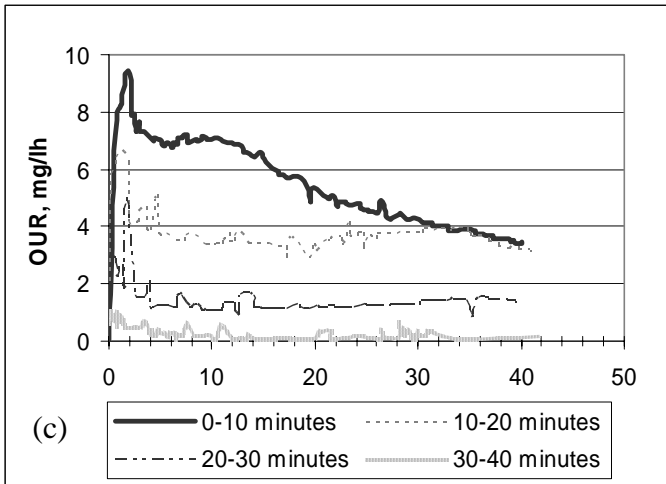
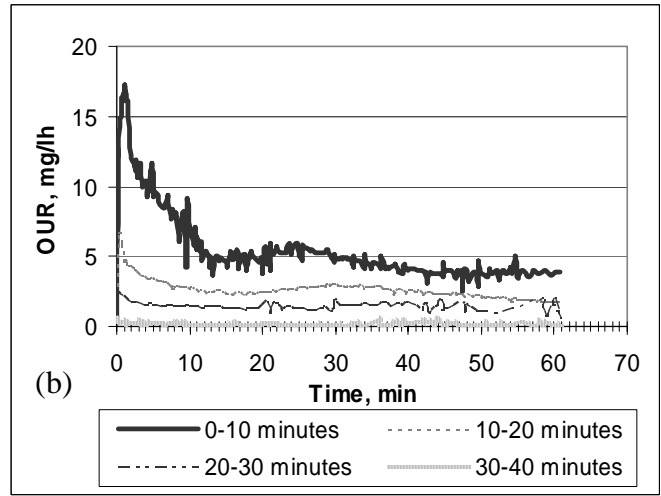
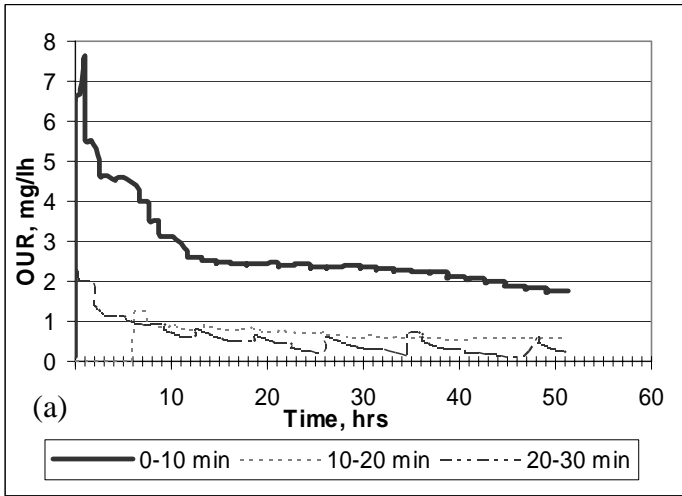
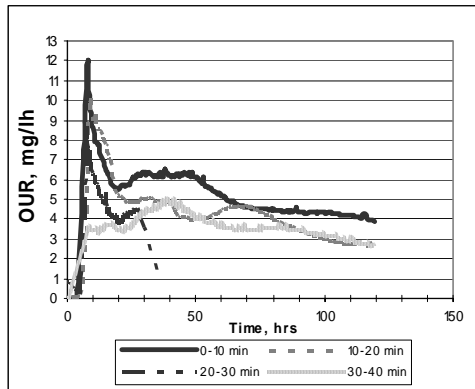
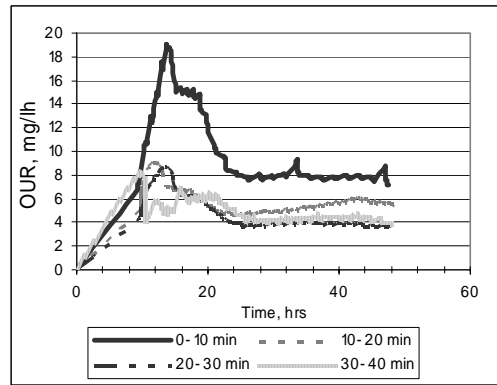


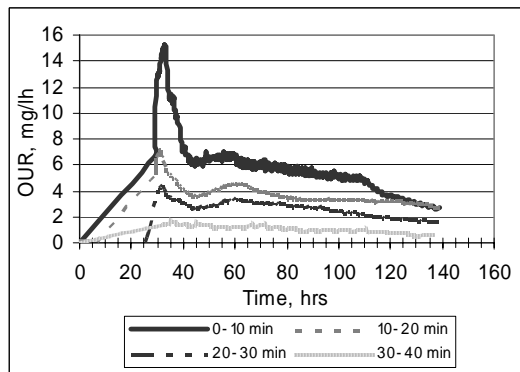
Figure 4: OUR profile during 4 storm events at Frejlev, Denmark for (a) 07-09-2001 (b) 15-09-2001 (c) 21-09-2001 (d) 04-11-2001



(a)

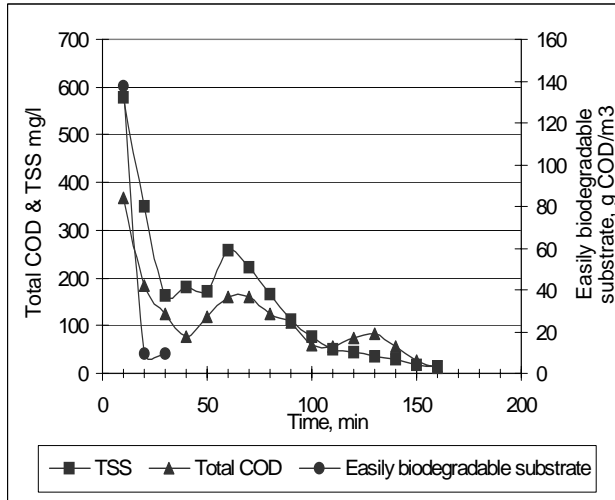


(b)

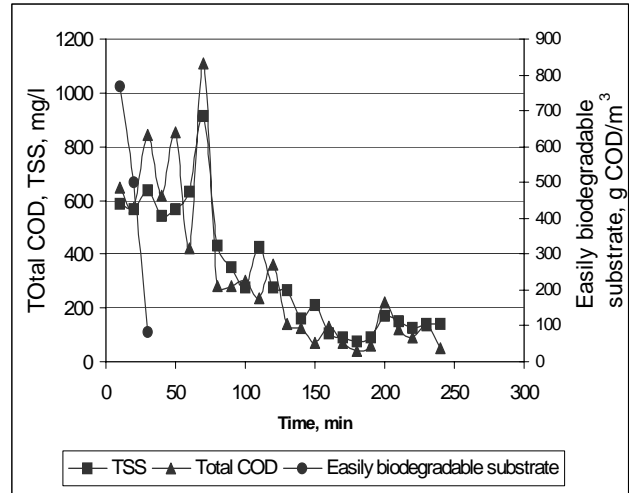


(c)

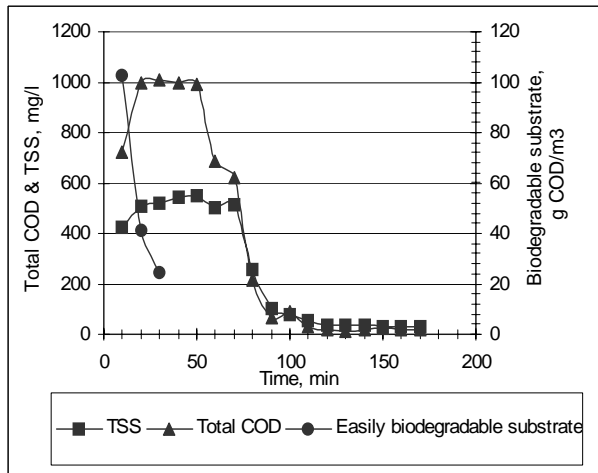
Figure 5: OUR profile during 3 storm events at Frejlev, Denmark (a) 01-02-1999 (b) 15-02-1999 (c) 24-02-1999



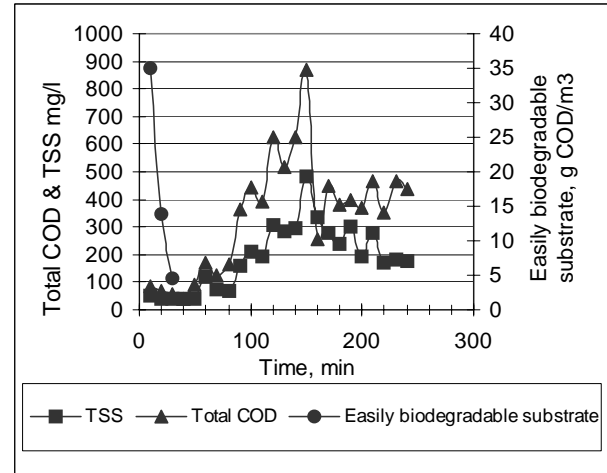
(a)



(b)

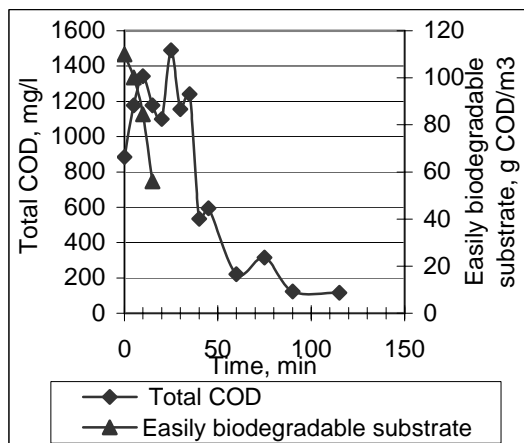


(c)

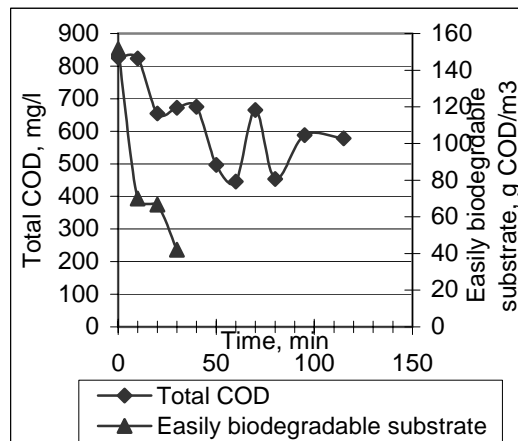


(d)

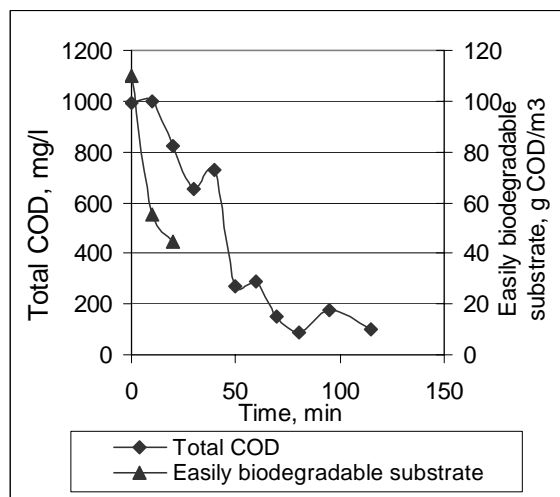
Figure 6: Variation of Easily biodegradable substrate with TSS and Total COD during storm events at Frejlev, Denmark (a) 07/09/01 (b) 15/09/01 (c) 21/09/01 (d) 04/11/01



(a)



(b)



(c)

Figure 7: Variation of Easily biodegradable substrate with TSS and Total COD during storm events at Frejlev, Denmark (a) 03/02/99 (b) 15/02/99 (c) 25/02/99