



UNIVERSITY OF LEEDS

This is a repository copy of *Experimental Validation of Plant Peroxisomal Targeting Prediction Algorithms by Systematic Comparison of In Vivo Import Efficiency and In Vitro PTS1 Binding Affinity*.

White Rose Research Online URL for this paper:
<http://eprints.whiterose.ac.uk/84173/>

Version: Supplemental Material

Article:

Skoulding, NS, Chowdhary, G, Deus, MJ et al. (3 more authors) (2015) Experimental Validation of Plant Peroxisomal Targeting Prediction Algorithms by Systematic Comparison of In Vivo Import Efficiency and In Vitro PTS1 Binding Affinity. *Journal of Molecular Biology*, 427 (5). pp. 1085-1101. ISSN 0022-2836

<https://doi.org/10.1016/j.jmb.2014.12.003>

Reuse

Items deposited in White Rose Research Online are protected by copyright, with all rights reserved unless indicated otherwise. They may be downloaded and/or printed for private study, or other acts as permitted by national copyright laws. The publisher or other rights holders may allow further reproduction and re-use of the full text version. This is indicated by the licence information on the White Rose Research Online record for the item.

Takedown

If you consider content in White Rose Research Online to be in breach of UK law, please notify us by emailing eprints@whiterose.ac.uk including the URL of the record and the reason for the withdrawal request.



eprints@whiterose.ac.uk
<https://eprints.whiterose.ac.uk/>

Experimental validation of plant peroxisomal targeting prediction algorithms by systematic comparison of *in vivo* import efficiency and *in vitro* PTS1 binding affinity

Nicola S. Skoulding^{#1}, Gopal Chowdhary^{#2,3}, Mara J. Deus², Alison Baker⁴, Sigrun Reumann^{2,5}, and Stuart L. Warriner¹

[#]These authors contributed equally to this work.

¹ - School of Chemistry and the Astbury Centre, University of Leeds, Leeds, LS2 9JT, UK.

² - Centre for Organelle Research (CORE), Faculty of Science and Technology, University of Stavanger, Richard Johnsons gate 4, N-4021 Stavanger, Norway.

³ - KIIT School of Biotechnology, Campus XI, KIIT University, I-751024 Bhubaneswar, India.

⁴ – Centre for Plant Sciences, Faculty of Biological Sciences, University of Leeds, Leeds, LS2 9JT, UK.

⁵ - Department of Biology, Biocentre Klein Flottbek, University of Hamburg, D-22609 Hamburg, Germany.

Correspondence to Stuart Warriner, s.l.warriner@leeds.ac.uk, +44 113 343 6437.

Supporting Information

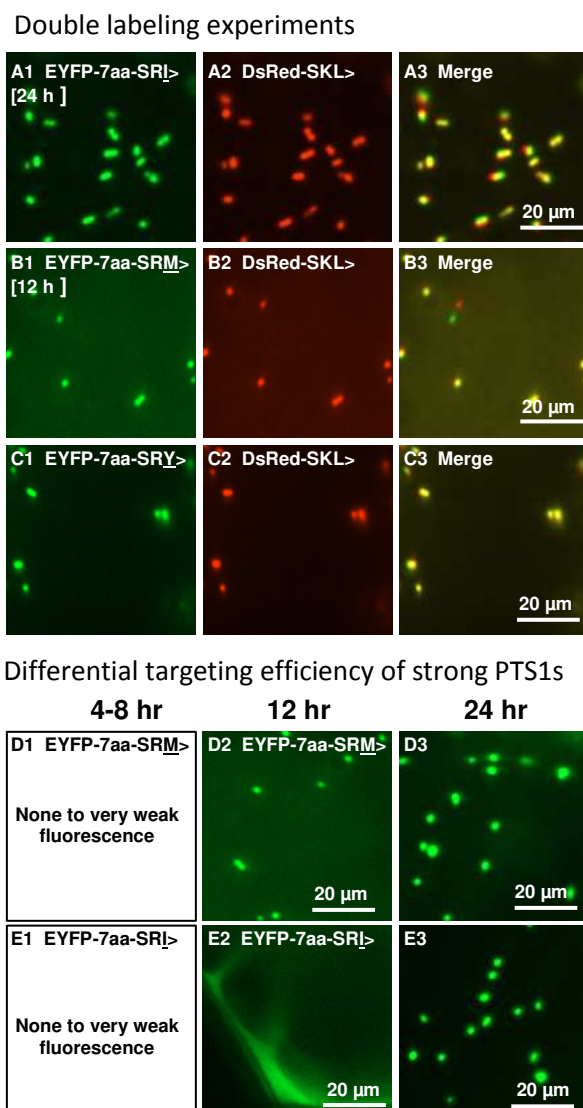
Contents

1	Supplementary Figures	4
	Supplementary Figure 1.....	4
	Supplementary Figure 2.....	5
	Supplementary Figure 3.....	6
	Supplementary Figure 4.....	7
	Supplementary Figure 5.....	8
2	Supplementary Tables	9

Supplementary Table I :PWM Scoring Matrix.....	9
Supplementary Table II: Correlation analysis between PTS1 protein prediction scores and in vivo peroxisome targeting efficiency	10
Supplementary Table III: Statistical Analysis of the Prediction Models.....	11
Supplementary Table IV: Oligonucleotide primers used for reporter gene cloning.....	12
3 Determination of Binding Constants using Fluorescence Anisotropy Measurements.....	13
3.1 Measurement of Anisotropy.....	13
3.2 Preparation of Assay Plates	14
3.3 Determination of limits of anisotropy	14
3.4 Determination of the dissociation constant of the fluorescent tracer.....	14
3.5 Competition experiments to determine the dissociation constant of unlabelled peptides.....	15
4 Peptide Synthesis and Characterisation	17
4.1 General Information	17
4.2 General Procedure for Peptide Synthesis.....	17
4.2.1 Peptide Assembly.....	17
4.2.2 Cleavage of Peptide from resin.....	17
4.2.3 Synthesis of the fluorescent tracer peptide.....	18
4.3 Characterisation data for peptides	19
4.3.1 Lissamine Rhodamine-YQSKL-CO ₂ H (Fluorescent tracer peptide).....	19
4.3.2 H ₂ N-YQSKL-CO ₂ H	20
4.3.3 H ₂ N-YPSKL-CO ₂ H.....	21
4.3.4 H ₂ N-YQSKV-CO ₂ H	22
4.3.5 H ₂ N-VAKTTRPSRL-CO ₂ H.....	23
4.3.6 H ₂ N-VAKTTRPSRM-CO ₂ H	24
4.3.7 H ₂ N-VAKTTRPSRI-CO ₂ H	25
4.3.8 H ₂ N-VAKTTRPSRY-CO ₂ H.....	26
4.3.9 H ₂ N-VAKTTRPSRV-CO ₂ H	27
4.3.10 H ₂ N-VAKTTRPSKL-CO ₂ H.....	28
4.3.11 H ₂ N-VAKTTRPSNM-CO ₂ H.....	29
4.3.12 H ₂ N-VAKTTRPARV-CO ₂ H.....	30
4.3.13 H ₂ N-VAKTTRPPRV-CO ₂ H.....	31
4.3.14 H ₂ N-VAKTTRPSNV-CO ₂ H.....	32
4.3.15 H ₂ N-VAKTTRPPRI-CO ₂ H	33
4.3.16 H ₂ N-VAKTTRQSRL-CO ₂ H	35

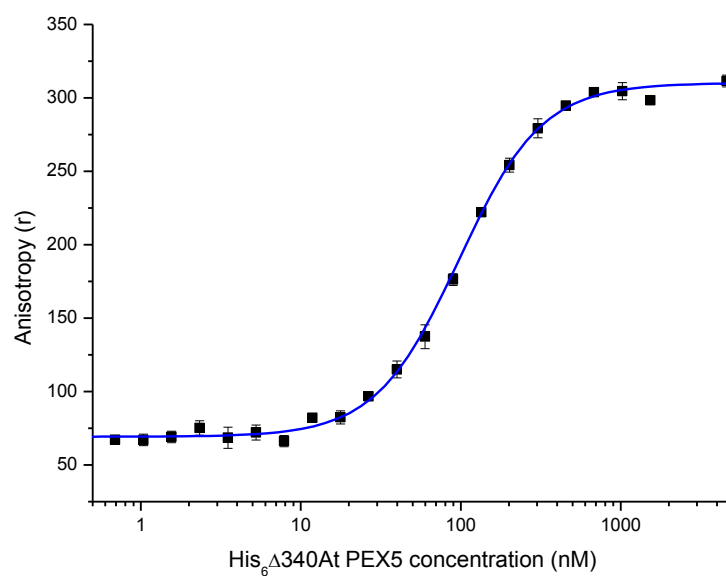
4.3.17	H ₂ N-VAKTTAQSRL-CO ₂ H	36
4.3.18	H ₂ N-VAATTRQSRL-CO ₂ H	37
4.3.19	H ₂ N-VAATTAQSRL-CO ₂ H	38
5	References	38

1 Supplementary Figures

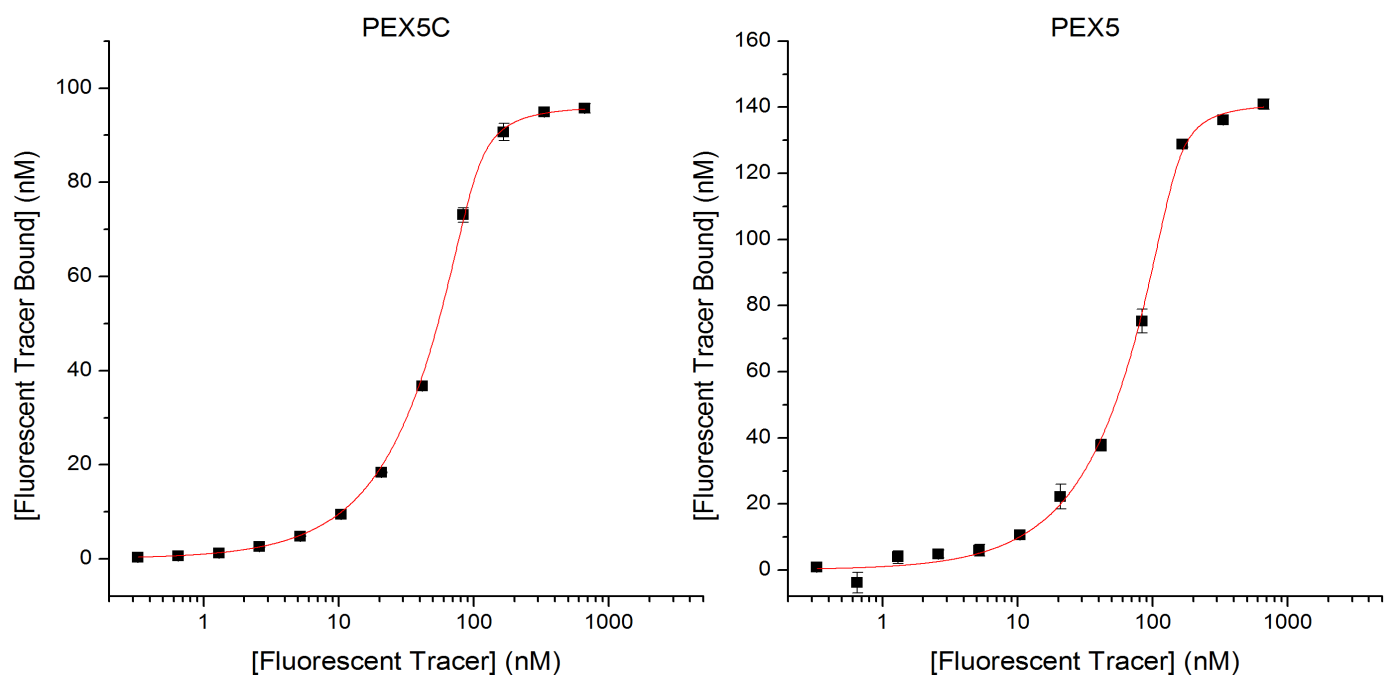


Supplementary Figure 1

Verification of peroxisome targeting for selected point mutated reporter fusions (a-c) and analysis of peroxisome targeting at very early time points p.t. for two canonical strong PTS1s, SRM> (d) and SRI> (e). Onion epidermal cells were biolistically transformed with EYFP fusion constructs that were C-terminally extended by the decapeptide PTS1 domain of a model sequence, acyl-CoA oxidase isoform 4 from *Zinnia elegans* (ZeACX4, VAKTTRP-SRV>) or various mutant versions. Subcellular targeting was analyzed by fluorescence microscopy at different time intervals post transformation (p.t.). The mutated aa are underlined. Peroxisome targeting was verified by colocalization of EYFP fluorescence with the peroxisomal marker DsRed-SKL for the original model sequence (see Fig. 1b) and the PTS1 tripeptide point mutations from SRV> to SRI> (a), to SRM> (b) and to SRY> (c). To investigate putative peroxisome targeting efficiencies for the two canonical strong PTS1 domains terminating with SRM> and SRI> and document the efficiency of peroxisome targeting, peroxisome targeting was investigated at very early time points p.t. (4 h, 8 h, 12 h and 24 h). The EYFP images were not modified for brightness or contrast in single transformants (d and e).

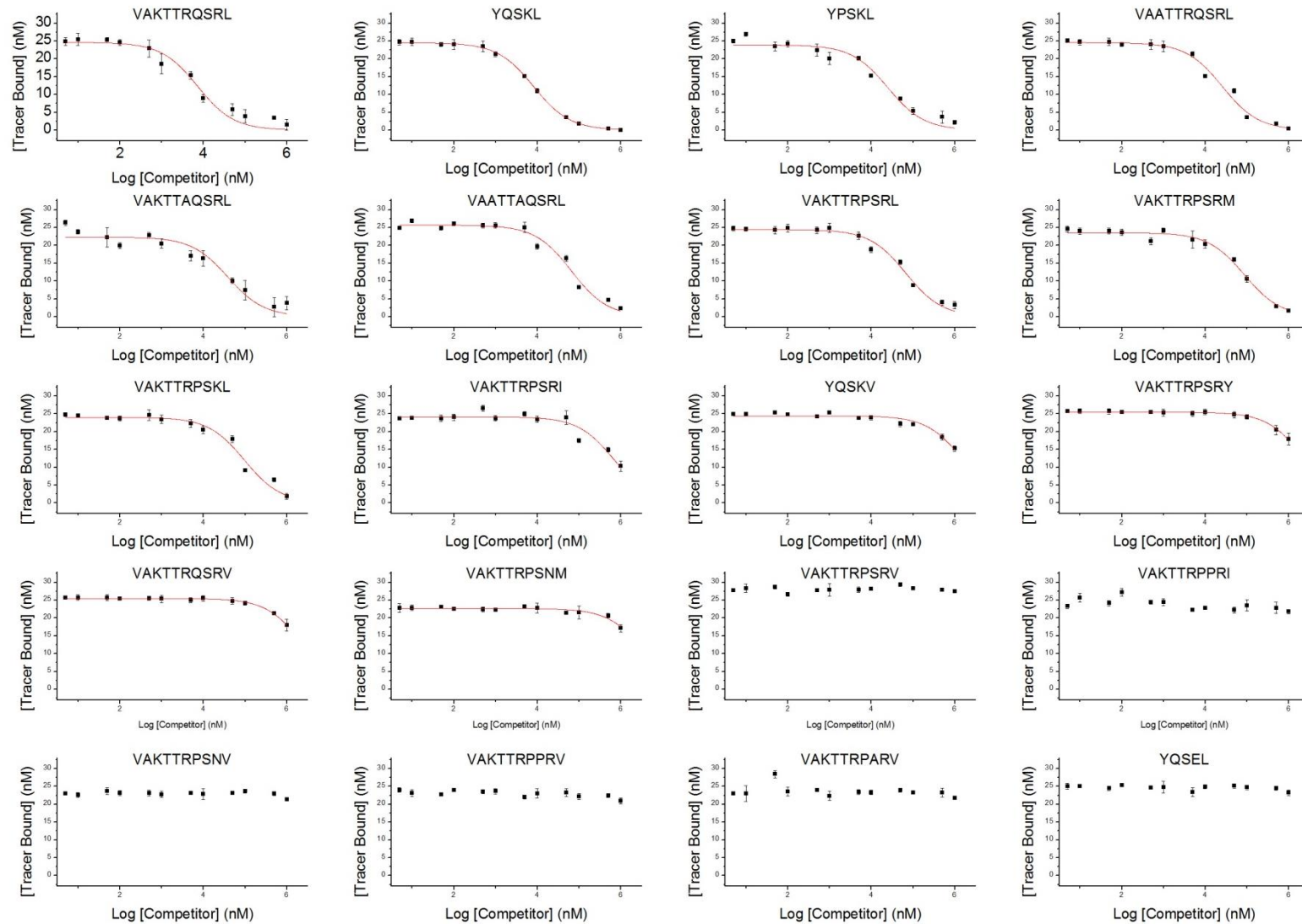


Supplementary Figure 2. Determination of the maximum and minimum anisotropy values by titration of protein (PEX5C) into a fixed concentration of fluorescent tracer (lissamine labelled YQSKL, 100 nM). The anisotropy was measured using the methods detailed in Section 3.3 and the curve is a fit to Equation 3.



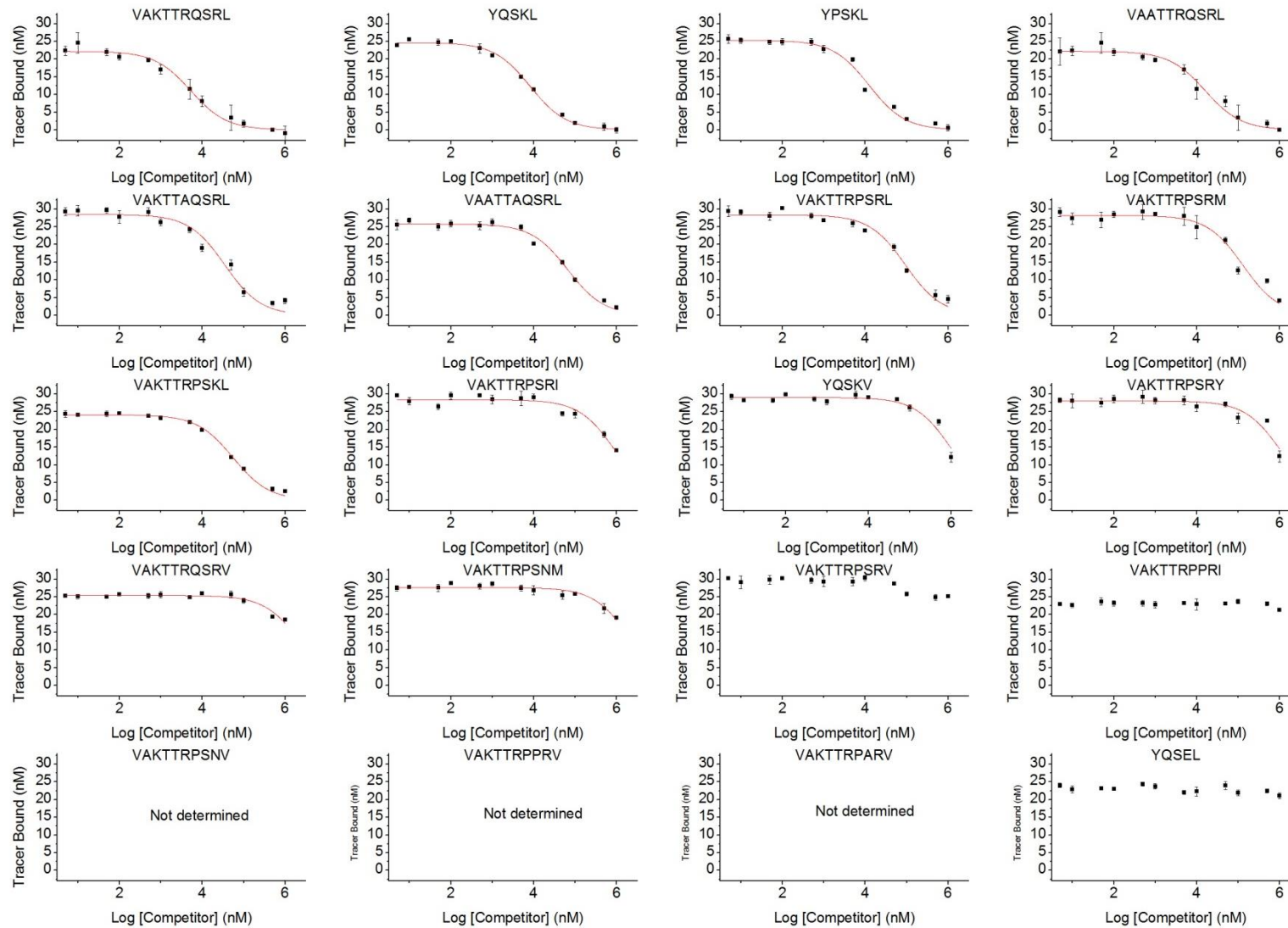
Supplementary Figure 3. Determination of K_d of the Tracer Peptide for PEX5C (left) and PEX5 (right). Fluorescent tracer (lissamine labelled YQSKL) was titrated into a fixed concentration of protein (~ 100 nM). The anisotropy was measured and converted using appropriate equations to give the concentration of bound tracer (Section 3.4). The curves are the result of non-linear least squares fitting for the data to Equation 5. PEX5C: $K_d = 3.98 \pm 0.53$ nM, $P_T = 96.2 \pm 0.71$ nM, PEX5: $K_d = 4.52 \pm 1.2$ nM, $P_T = 141.2 \pm 2.0$ nM.

PEX5C



Supplementary Figure 4. Competition experiments to determine the affinity of peptides for PEX5C. The curves are fits to equation 6 and were used to extract IC_{50} values which were then converted to K_i (Section 3.5).

PEX5



Supplementary Figure 5 Competition experiments to determine the affinity of peptides for PEX5. The curves are fits to equation 6 and were used to extract IC_{50} values which were then converted to K_i (Section 3.5)

2 Supplementary Tables

Supplementary Table I :PWM Scoring Matrix

In the PWM-based PTS1 protein prediction model, each of the 20 possible amino acid (aa) residues of the C-terminal 14-aa positions is assigned a position-specific score, which indicates whether a specific residue at a particular sequence position is predicted to enhance (more positive score) or reduce peroxisome targeting (more negative score) and to what extent.

Position															
Res.	-14	-13	-12	-11	-10	-9	-8	-7	-6	-5	-4	-3	-2	-1	Res.
A	-0,06	-0,06	-0,07	0,01	-0,01	-0,10	-0,06	-0,10	-0,12	-0,04	-0,01	0,34	-0,17	-0,22	A
R	-0,08	-0,09	0,01	-0,06	-0,10	-0,10	-0,06	-0,07	0,03	-0,06	0,03	-0,16	0,46	-0,23	R
N	-0,09	-0,12	-0,08	-0,11	-0,01	-0,05	-0,06	-0,07	-0,08	-0,13	-0,09	-0,17	0,01	-0,16	N
D	-0,09	-0,05	-0,08	0,02	-0,04	-0,01	-0,10	-0,07	-0,08	-0,15	-0,17	-0,23	-0,15	-0,13	D
C	-0,12	-0,06	-0,16	-0,13	-0,16	-0,19	-0,09	-0,03	-0,17	-0,08	-0,18	0,12	-0,10	-0,22	C
Q	-0,06	-0,09	-0,07	-0,02	-0,10	-0,06	0,00	-0,04	-0,02	-0,07	-0,04	-0,14	-0,06	-0,18	Q
E	-0,06	-0,08	-0,11	-0,07	-0,07	-0,02	-0,17	0,00	-0,12	-0,07	-0,15	-0,17	-0,12	-0,13	E
G	-0,06	-0,08	-0,08	-0,04	-0,11	-0,09	-0,03	-0,08	-0,08	-0,07	-0,16	-0,20	-0,18	-0,13	G
H	-0,10	-0,01	-0,06	-0,05	-0,03	0,01	-0,04	-0,03	-0,07	-0,08	0,03	-0,09	-0,07	-0,18	H
I	-0,04	-0,11	-0,06	-0,12	-0,08	-0,10	-0,02	-0,06	-0,04	0,00	-0,10	-0,19	-0,13	0,33	I
L	-0,12	-0,09	-0,07	-0,10	-0,06	-0,10	-0,08	-0,10	-0,03	-0,01	-0,08	-0,19	-0,12	0,66	L
K	-0,12	-0,08	-0,10	-0,02	-0,12	0,00	-0,05	-0,01	-0,03	-0,11	0,00	-0,12	0,44	-0,21	K
M	-0,10	-0,03	0,00	-0,11	-0,08	-0,10	-0,05	-0,07	0,07	-0,02	-0,11	-0,13	-0,12	0,64	M
F	-0,07	-0,18	-0,13	-0,08	-0,14	-0,04	-0,05	-0,15	-0,10	-0,04	-0,05	-0,02	-0,19	-0,09	F
P	-0,07	-0,12	-0,05	-0,10	0,03	-0,08	-0,07	0,02	-0,05	0,03	0,00	0,13	-0,18	-0,19	P
S	-0,05	-0,08	-0,05	-0,04	-0,09	-0,08	0,00	-0,10	-0,04	-0,11	-0,06	0,48	-0,06	-0,19	S
T	-0,14	-0,11	-0,02	-0,02	0,00	-0,08	-0,06	-0,05	-0,04	-0,05	-0,06	-0,14	-0,16	-0,24	T
W	0,15	0,15	0,00	0,01	-0,09	-0,12	-0,19	-0,14	-0,33	-0,17	-0,10	-0,26	-0,15	-0,21	W
Y	0,01	-0,03	-0,14	-0,28	-0,11	0,02	-0,07	-0,12	0,00	-0,09	0,01	-0,13	-0,12	-0,16	Y
V	-0,09	-0,04	-0,03	-0,08	0,00	-0,07	-0,11	-0,08	-0,06	-0,05	-0,07	-0,11	-0,20	-0,12	V
	-14	-13	-12	-11	-10	-9	-8	-7	-6	-5	-4	-3	-2	-1	

Supplementary Table II: Correlation analysis between PTS1 protein prediction scores and *in vivo* peroxisome targeting efficiency

Correlation analysis between PTS1 protein prediction scores and *in vivo* peroxisome targeting efficiency of reporter protein fusions with mutated PTS1 domains.

Reporter protein fusion	PWM pred. score	Post. prob. (%)	Bal. post. prob. (%)	Perox. targ. predict. ¹	Perox. targ. efficiency	Reference
EYFP-VAKTTRPSRM	0.969	100	100	P (P)	P (very strong)	this study
EYFP-VAKTTRPSRI	0.664	99.6	99.5	P (P)	P (strong)	this study
EYFP-AKTTRPSNM	0.523	93.3	97.8	P (P)	P (mod.)	this study
EYFP-VAKTTRPSRV	0.216	0.4	57.6	C (P)	P (weak)	Lingner et al. (2011), this study
EYFP-VAKTTRPSRY	0.173	0.1	45.5	C (C)	P (mod.)	this study
EYFP-VAKTTRPSRK	0.119	0.0	31.1	C (C)	C	this study
EYFP-AGTTGGSRV	0.073	0.0	21.2	C (C)	P (weak)	this study
EYFP-VAKTTRDSRV	0.045	0.0	16.4	C (C)	C	this study
EYFP-VAETTDPSRV	0.011	0.0	11.7	C (C)	C	this study
EYFP-VAKTTRPPRV	-0.135	0.0	2.5	C (C)	C	this study
EYFP-VAKTTRPSNV	-0.229	0.0	0.9	C (C)	P (weak)	this study
EYFP-VAKTTRPSNY	-0.272	0.0	0.50	C (C)	C	this study
EYFP-VAKTTRPSTV	-0.401	0.0	0.1	C (C)	C	this study

Mutations introduced into the model decapeptide of ZeACX4 (VAKTTRPSRV, shaded in grey) are underlined, and the C-terminal tripeptides are printed bold. The constructs are sorted by PWM prediction score; C, cytosol; p, peroxisome; n.d., not determined. For additional information see Tables 1 & 2 in the manuscript.

¹ Peroxisome targeting prediction (column 5) is presented for the standard posterior probability and (in parenthesis) for the balanced posterior probability.

Supplementary Table III: Statistical Analysis of the Prediction Models

P-Values for statistical analysis of the correlation between prediction of peroxisomal protein targeting and observed results from in vivo targeting experiments. (a) PWM Score (b) Posterior Probability (c) Balanced Posterior Probability. In each case ANOVA analysis showed that the means of at least one of the predictive parameters were different between classes. Post-Hoc two-tailed Student T-Test between the categories highlighted where the parameters were significantly different (highlighted). The threshold was the 95% confidence band with the P-value for significance scaled using the Bonferroni correction.

(a) PWM Score

	P(strong)	P(mod)	P(weak)	C
P(strong)		0.1810	0.0298	0.0015
P(mod)	0.1810		0.2225	0.0381
P(weak)	0.0298	0.2225		0.4239
C	0.0015	0.0381	0.4239	

(b) Posterior Probability

	P(strong)	P(mod)	P(weak)	C
P(strong)		0.3726	2.63×10^{-08}	4.80×10^{-17}
P(mod)	0.3726		0.2725	0.0777
P(weak)	2.63×10^{-08}	0.2725		0.1705
C	4.80×10^{-17}	0.0777	0.1705	

(c) Balanced Posterior Probability

	P(strong)	P(mod)	P(weak)	C
P(strong)		0.3950	0.0419	0.0001
P(mod)	0.3950		0.2173	0.0070
P(weak)	0.0419	0.2173		0.2548
C	0.0001	0.0070	0.2548	

Supplementary Table IV: Oligonucleotide primers used for reporter gene cloning

One forward primer was used for EYFP amplification and introduced a 5'-NcoI site into the PCR products (5'-AAGTCCATGGTGAGCAAGGGCGAGGA-3'). In the reverse primers the XbaI sites are underlined. Mutations introduced into the model decapeptide of ZeACX4 (VAKTTR**SRV**) are underlined, and the C-terminal tripeptides are printed bold.

Construct	Primer acronym	Reverse primer sequence (5' to 3')	Reference
EYFP-VAKTTR SRV		TATAT <u>CTAGAGT</u> CAcacgcggtggggcgggtcgtctttgcaacCTTGTACAGCTCGTCCATGCC	Lingner et al. (2011)
EYFP-VAKTTR SR <u>I</u>	SR580r	TATG <u>TCTAGAGT</u> CAgatcggtggggcgggtcgtctttgcaacCTTGTACAGCTCGTCCATGCC	This study
EYFP-VAKTTR SR <u>M</u>	SR581r	TATG <u>TCTAGAGT</u> CAcatcggtggggcgggtcgtctttgcaacCTTGTACAGCTCGTCCATGCC	This study
EYFP-VAKTTR SR <u>Y</u>	GC60r	TATG <u>TCTAGAGT</u> CAATAgctgggtggggcgggtcgtctttgcaacCTTGTACAGCTCGTCCATGCC	This study
EYFP-VAKTTR SR <u>K</u>	GC111r	TATG <u>TCTAGAGT</u> CActtgcggtggggcgggtcgtctttgcaacCTTGTACAGCTCGTCCATGCC	This study
EYFP-VAKTTR PS <u>NV</u>	GC62r	TATG <u>TCTAGAGT</u> CAcacGTTgctggggcgggtcgtctttgcaacCTTGTACAGCTCGTCCATGCC	This study
EYFP-VAKTTR PS <u>TV</u>	GC112r	TATG <u>TCTAGAGT</u> CAcacggtgctggggcgggtcgtctttgcaacCTTGTACAGCTCGTCCATGCC	This study
EYFP-VAKTTR PS <u>NM</u>	GC61r	TATG <u>TCTAGAGT</u> CAcatGTTgctggggcgggtcgtctttgcaacCTTGTACAGCTCGTCCATGCC	This study
EYFP-VAKTTR PS <u>NY</u>	GC115r	TATG <u>TCTAGAGT</u> CAATAGTTgctggggcgggtcgtctttgcaacCTTGTACAGCTCGTCCATGCC	This study
EYFP-VAKTTR PR <u>RV</u>	GC113r	TATG <u>TCTAGAGT</u> CAcacgctggggggcgggtcgtctttgcaacCTTGTACAGCTCGTCCATGCC	This study
EYFP-VAG <u>TTG</u> SRV	GC64r	TATG <u>TCTAGAGT</u> CAcacggttctctccggtcgttcttctgcaacCTTGTACAGCTCGTCCATGCC	This study
EYFP-VA <u>ETD</u> PSRV	GC116r	TATG <u>TCTAGAGT</u> CAcacggtgctggggcgggtcgttcttctgcaacCTTGTACAGCTCGTCCATGCC	This study
EYFP-VAKTTR D <u>SRV</u>	GC118r	TATG <u>TCTAGAGT</u> CAcacggtgctgctgggtcgtctttgcaacCTTGTACAGCTCGTCCATGCC	This study

3 Determination of Binding Constants using Fluorescence Anisotropy Measurements.

3.1 Measurement of Anisotropy.

Anisotropy is a fundamental molecular property which reflects the interaction of a fluorescent molecule with plane polarised light. Low values of anisotropy indicate that the molecule is tumbling rapidly relative to the fluorescence lifetime of the fluorophore whereas higher values of anisotropy indicate that the tumbling times are slow compared to this value. The fluorescence lifetimes of the fluorophores used in this study are typically 1-10 ns and hence low values of anisotropy are shown when the fluorophore is part of a small peptide molecule. However, when the fluorophore labelled peptide binds to the larger protein the tumbling rate is related to the overall complex size and consequently slows significantly with a resulting increase in anisotropy. Anisotropy is an intrinsic molecular property and should be used for the determination of binding constants (rather than the related polarization values). A more detailed discussion of the principles of fluorescence anisotropy are found in reference [1].

Fluorescence anisotropy measurements were carried out on an Envision™ 2103 multilabel plate reader (PerkinElmer) using the following optics:

	<u>Manufacturer's description</u>	<u>Wavelength (nm)</u>	<u>Bandwidth (nm)</u>
Dichroic Mirror	BODIPY TMR FP dichroic mirror	555	-
Excitation Filter	BODIPY TMR FP 531	531	25
Emission Filter 1:	BODIPY TMR FP P-pol 595	595	60
Emission Filter 2:	BODIPY TMR FP S-pol 595	595	60

Assays were performed using black 384 well plates (Optiplate, PerkinElmer) and the plates were incubated at 25 °C for 20 minutes with agitation (within the plate reader) prior to reading to ensure equilibration. The reading protocol was optimised (instrument gain, read height) using the instrument software to ensure that the detector was not saturated. 30 flashes were used per measurement.

The anisotropy (r) was calculated using Equation 1.

$$r = 1000 \times \frac{s - gp}{s + g2p} \quad \text{Equation 1}$$

The total fluorescence intensity (I) is defined by Equation 2.

$$I = s + g2p \quad \text{Equation 2}$$

Where s is the intensity of the light emitted with the same polarisation as the excitation light, p is the intensity of the light emitted with perpendicular polarisation and g is a grating factor which accounts for the different responsiveness of an instrument to light with differing polarisations. In these assays this was set to 1 as part of the optimisation process.

Blank corrections were performed by subtracting the average of the appropriate blank intensities in the s and p channels prior to calculation of the anisotropy. [2]

3.2 Preparation of Assay Plates

All assays were performed using an FA buffer (HEPES (20 mM), NaCl (150 mM), pH 7.5 with NaOH).

In order to minimise non-specific interactions the plates were pre-treated with a gelatine solution:[3] All wells to be used were filled with 80 µl of FA buffer containing 0.32 mg/ml of gelatine solution using a Multidrop combi (ThermoElectron), sealed using self adhesive plate seals (StarLab) and stored at 4 °C the evening prior to use.

The lissamine rhodamine-YQSKL peptide was stored as a stock solution at 500 µM in H₂O, stored at either 4 °C as a working stock with dilutions made fresh for each plate or at -80 °C for longer term storage. All stock solutions (protein, lissamine rhodamine-YQSKL and inhibitor) were stored at 4 °C or kept on ice at all times.

3.3 Determination of limits of anisotropy

60 µl of gelatine buffer solution was removed from plate rows A-F, wells 1-24. 40 µl of protein stock solution (3x desired concentration) was added to well A1 and the contents of the well agitated with a pipette. 40 µl of solution was removed from A1 and placed in A2, then agitated and placed into A3. Following addition and agitation of column A24, 40 µl of solution was removed and discarded. The above process repeated across the entire series and for Rows B-F. 20 µl of 200 nM of lissamine rhodamine-YQSKL solution in FA Buffer (final concentration 100 nM) was added to all wells in the first three (A-C) rows. 20 µl of FA buffer was then added to the wells of the other three rows (D-F) to act as the blank. The anisotropy of each well was measured and the average intensities measured in wells containing no tracer peptide were used to provide a blank correction for each protein concentration (see section 3.1). The anisotropy was plotted against protein concentration with the standard deviation of the replicates used as the error. The data were fitted to a logistic function (equation 3) to find the lower and upper limits of the anisotropy r_{max} , r_{min} which reflect the anisotropy of the tracer when in the unbound and bound state respectively (Supplementary Figure 2).

$$r = \frac{r_{min} - r_{max}}{1 + (x/x_0)^p} + r_{max}$$

Equation 3

Where x is the protein concentration
 x_0 is the midpoint of the transition
and p is the slope

Across a number of repeats, average values for the limits of anisotropy were found to be $r_{min} = 69$ $r_{max} = 310$ for both full length PEX5 and PEX5C and these values were used throughout subsequent assays. These data were also used to check for any change in quantum yield between the bound and free states of the assay by checking for any variation in total intensity (Equation 2) over the course of the titration. No change was observed (data not shown).

3.4 Determination of the dissociation constant of the fluorescent tracer.

60 µl of gelatine buffer solution was removed from wells 1-3 of rows A-P. A serial dilution of lissamine rhodamine labelled YQSKL in FA buffer was made starting with 2000 nM (3 x final concentration) and diluted by ½ through a series. 20 µl of each was added to columns 1 - 14. 20 µl of FA buffer was added to A15-C15 to act as a blank. 20 µl of a ~300 nM solution of protein in FA buffer was then added to all wells being used (3 x final concentration). The anisotropy was then measured (Section 3.1) and calculated by subtracting the average intensities from the s and p channels in the blank wells from the wells of interest. The anisotropy in each well was converted into the fraction of tracer bound using equation 4 and finally to the amount of tracer bound by multiplying by the total concentration of tracer in the well of interest.

$$\frac{L_B}{L_T} = \left[\frac{\lambda(r_{max} - r)}{(r - r_{min})} + 1 \right]^{-1}$$

Equation 4

Where L_B is the concentration of fluorescent tracer bound to PEX5, L_T is the total tracer concentration. λ reflects the difference in quantum yields of the bound and free states which was determined to be 1 (Section 3.3)

The data were plotted and fitted to equation 5 using non-linear least squares fitting algorithm in OriginPro to determine the K_d of the tracer peptide for the protein. The error in K_d is obtained from the fitting error within the procedure (Supplementary Figure 3).

$$L_B = \frac{(L_T + P_T + K_d) - \sqrt{(L_T + P_T + K_d)^2 - 4L_T P_T}}{2}$$

Equation 5

Where L_B is the concentration of fluorescent tracer bound to PEX5, L_T is the total tracer concentration. P_T is the total concentration of PEX5

3.5 Competition experiments to determine the dissociation constant of unlabelled peptides.

70 μ l gelatin/buffer solution was removed from rows A-F, wells 1-14. A concentration series of unlabelled peptide from 4 mM to 0 mM was made into FA buffer. 10 μ l of each concentration was added to the columns 1 – 14. 10 μ l of a 120 nM lissamine rhodamine-YQSKL solution added to all wells on rows A-C. For blank samples, 10 μ l of FA buffer was then added to all wells on rows D-F. Finally 10 μ l of an 800 nM solution of protein then added to all wells being used. The anisotropy was then measured (Section 3.1) and calculated by subtracting the average intensities from the s and p channels in the blank wells from the wells of interest. The anisotropy in each well was converted into the fraction of tracer bound using equation 4 and finally to the amount of tracer bound by multiplying by the final tracer concentration (30 nM). The bound amount was plotted against the Log_{10} of the competitor concentration and the data fitted to a single site competition model (Equation 6) in Origin pro. The lower asymptote (Min) was fixed at 0 in all the fittings. The error in IC_{50} was taken from the fitting error of the data. The data for competition of unlabelled peptides for the binding site of PEX5C and PEX 5 are shown in Supplementary Figures 4 and 5.

$$L_B = \text{Min} + \frac{(\text{Max} - \text{Min})}{1 + 10^{(x - \text{LogIC}_{50})}}$$

Equation 6.

Where x is the Log_{10} of the unlabelled peptide concentration. Max and Min are the upper and lower asymptotes of the curve. Min was fixed at zero in all fittings for consistency.

The IC_{50} values were then converted to the K_i of the competitor peptide by combination with K_d of the protein using the method of Nicolovska-Coleska [4] using Equations 7-10.

$$K_i = \frac{I_{50}}{\frac{L_{50}}{K_d} + \frac{P_0}{K_d} + 1}$$

Equation 7

Where K_i is the dissociation constant of unlabelled peptide and K_d is the dissociation constant of fluorescent tracer. The remaining parameters are computed using Equations 8-10

P_0 , the unbound concentration of protein at zero inhibitor concentration is calculated from:

$$P_0 = \frac{-(K_d + L_T - P_T) + \sqrt{(K_d + L_T - P_T)^2 - 4K_dP_T}}{2}$$

Equation 8

Where K_d is the dissociation constant of fluorescent tracer, L_T is the total tracer concentration. P_T is the total concentration of PEX5

L_{50} the concentration of unbound fluorescent tracer at the IC_{50} point is calculated from:

$$L_{50} = L_T - \frac{(P_T - P_0)}{2}$$

Equation 9

Where L_T is the total tracer concentration. P_T is the total concentration of PEX5 and P_0 is the unbound concentration of protein at zero inhibitor concentration calculated from Equation 8

I_{50} , the unbound inhibitor concentration at the IC_{50} point is calculated from:

$$I_{50} = IC_{50} - P_T + \left(\frac{P_T - P_0}{2}\right) \cdot \left(1 + \frac{K_d}{L_{50}}\right)$$

Equation 10

Where IC_{50} is determined from the curve fit of inhibitor titration. P_T is the total concentration of PEX5 and K_d is the dissociation constant of fluorescent tracer. P_0 is calculated from Equation 8 and L_{50} From Equation 9

As the error in the final K_i involves components from the error in the measurement of the K_d of the tracer and the IC_{50} of the inhibitor the error was assessed using simulation. A series of simulations were run with a simulated value of K_d and IC_{50} generated around the observed mean, the probability of the value occurring was based upon a normal distribution with standard deviation equal to the fitting error of each value. The simulated value was then propagated to give a simulated K_i . 2000 simulations were performed with the final error estimated from the standard deviation of the simulated results. The calculated K_i and errors are shown in the Table II of the main manuscript.

4 Peptide Synthesis and Characterisation

4.1 General Information

N-terminal Fmoc protected amino acids (Merck Millipore) were used with the following side chain protection: Arg (Pbf), Asn and Gln (Trt), Glu (OtBu) Lys, (N-Boc), Ser, Thr and Tyr (tBu). Peptides were synthesised on 2-Chlorotrityl resin which was purchased pre-loaded with the appropriate C-terminal amino acid. Peptide elongations were performed manually using standard Fmoc solid phase peptide synthesis as outlined by Chan and White (Chan and White, 1999) using SPE tubes fitted with a polyethylene frit (Grace Davidson, Baltimore, USA) and a vacuum tank attached to a water aspirator. DCM, Diethyl ether (Fisher Scientific, Hampton, NH, USA), DIPEA (Sigma-Aldrich), DMF (Fluka, Buchs, Switzerland) HCTU (Merck-Millipore), Piperidine (Fluka) and triisopropylsilane (Sigma-Aldrich) were used without further purification. TFA (Sigma-Aldrich) was freshly distilled before use. LissamineTM rhodamine B sulfonyl chloride was purchased from Invitrogen (Invitrogen Molecular Probes). Mass spectrometry and LC-MS was performed on a Bruker HCT Ultra spectrometer using an electrospray source. High Resolution accurate mass spectra were obtained on a Bruker MicrOTOF using electrospray ionisation. Analytical HPLC was performed on an Agilent 1290 Infinity LC system and preparative HPLC on a Gilson preparative system. Reverse phase solvents were acetonitrile and Ultra pure water both containing 0.1 % TFA.

4.2 General Procedure for Peptide Synthesis

4.2.1 Peptide Assembly

Peptides were prepared on 2 Cl-Trt resin preloaded with the C-terminal amino acid (0.085 mmol, 0.85 mmol/g). The resin was swollen in DCM for 20 mins then washed 2 x 5 mins with DMF. Fmoc amino acid (5 mmol) and HCTU (5 mmol) were dissolved in the minimum volume of DMF. DIPEA (10 mmol) was added and transferred to the tube containing the resin (1 mmol). The mixture was gently agitated for 1 hr on a laboratory rotator and the resin was isolated by filtration and washed with DMF (3 x 5 ml x 2 mins). A negative Kaiser colour test showed a complete reaction. The resin was treated with a solution of 20 % piperidine in DMF (5 x 5 ml x 2 mins) and then washed with DMF (5 x 5 ml x 2 mins). Couplings were repeated until the desired sequence had been assembled. The functionalised resin was washed with DMF (3 x 3 ml, 2 mins), Isopropanol (3 x 3 ml x 5 mins) and hexane (4 x 3 ml x 2 mins), sucked dry on a manifold tank (10 min) then dried *in-vacuo* over KOH for 16 hrs.

4.2.2 Cleavage of Peptide from resin

The dried functionalised resin was treated with a cleavage cocktail of TFA/H₂O/TIPS (95:2.5:2.5, 1 ml/25 mg resin) with the exception of Met containing peptides in which case a cocktail of TFA/H₂O/EDT/TIPS (95:2.5:2.5:1, 1 ml/25 mg resin) was used and all solvents degassed with nitrogen prior to use. The mixture was gently agitated for 1 hr. The resin beads were removed by filtration and rinsed with fresh TFA (2 x 2 ml). The combined filtrates were concentrated under reduced pressure to ~500 µl and the peptide then isolated by precipitation in chilled Et₂O (5 ml). The peptide was then dissolved in H₂O until the Et₂O contained no further precipitate and the aqueous solution

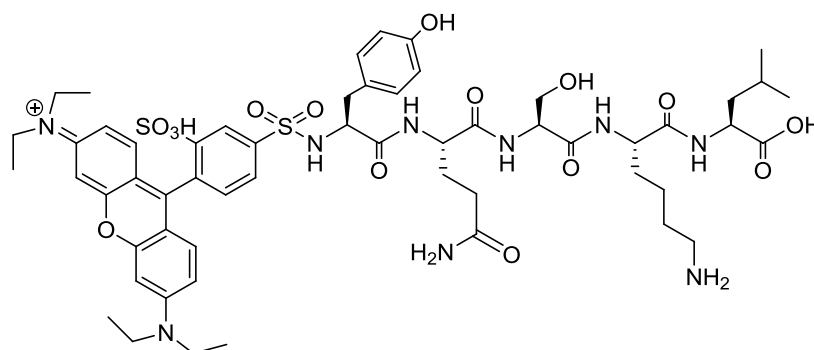
then washed with further chilled Et₂O (2 × 5 ml) then lyophilised. The resulting peptides were purified by preparative reverse phase HPLC, lyophilised and the purity of the peptides confirmed by electrospray MS and analytical HPLC. Recovered yields for the purified peptides are calculated based on the manufactures quoted loading of the resin.

4.2.3 *Synthesis of the fluorescent tracer peptide*

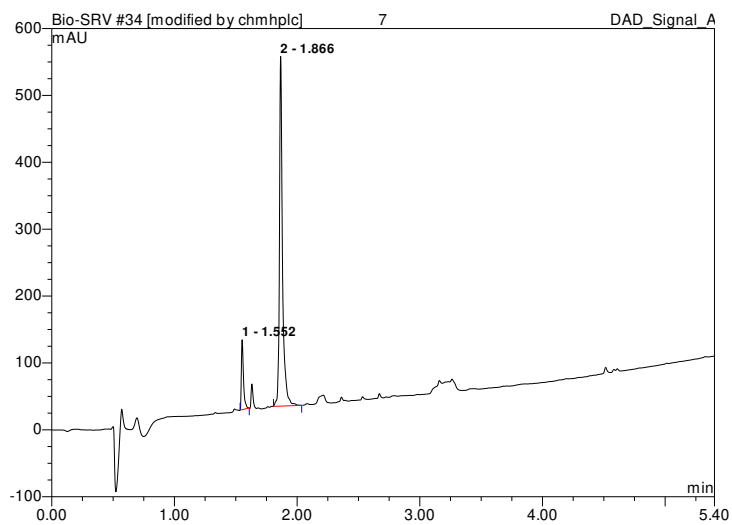
Fmoc cleaved, side-chain protected resin bearing the sequence YQSKL, (20 mg, 11.2 μmol) was suspended in anhydrous DMF (2 ml) and DIPEA (19.4 μL, 112 μmol, 10 eq) then LissamineTM rhodamine B sulfonyl chloride (20 mg, 3 eq) was added to the reaction mixture. The reaction was stirred in the dark on ice for 18 hrs under nitrogen. The resin washed with DMF (2 × 3 ml × 2 mins) and DCM (2 × 3 ml × 2 min), then cleaved and purified as detailed in the general method then purified *via* preparative HPLC to yield a dark pink solid

4.3 Characterisation data for peptides

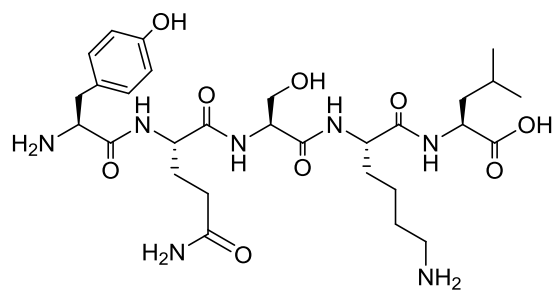
4.3.1 Lissamine Rhodamine-YQSKL-CO₂H (Fluorescent tracer peptide)



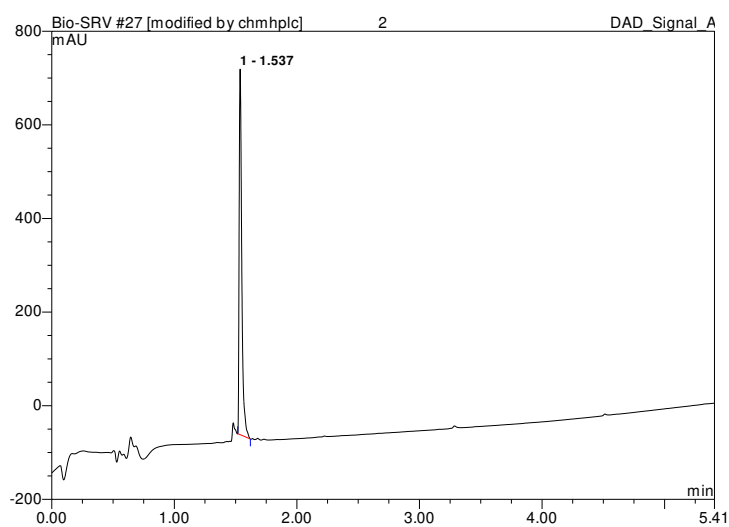
Yield = 2.4 mg, 20 %; RP-HPLC Ascentis Express Peptide (ES - C18, 10 cm x 2.1 mm); Flow rate 0.5 ml min⁻¹; Gradient elution t = 0 min, MeCN:H₂O with 0.1 % TFA, 5:95; t = 5.0 min, 95:5, t = 5.4 min 98:2; Rt 1.7 min; m/z (ES) found [M+H]⁺ 1179.4966; C₅₆H₇₇N₉O₁₅S₂ requires 1179.4970.



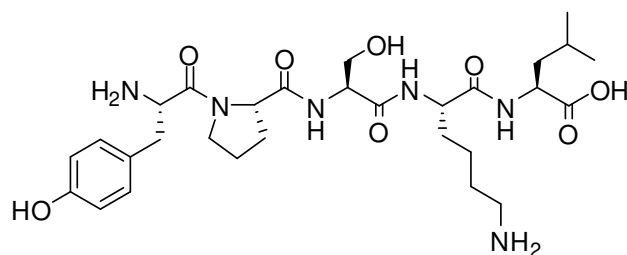
4.3.2 H₂N-YQSKL-CO₂H



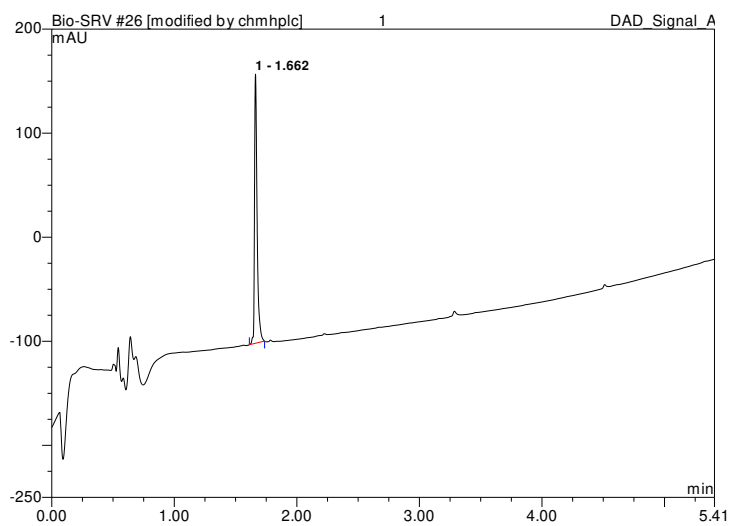
Yield = 33 mg; 62%. RP-HPLC Ascentis Express Peptide (ES - C18, 10 cm x 2.1 mm); Flow rate 0.5 ml min⁻¹; Gradient elution t = 0 min, MeCN:H₂O with 0.1 % TFA, 5:95; t = 5.0 min, 0:100, t = 5.4 min 98:2; Rt 1.7 min, *m/z* (ES) found [M+H]⁺ 638.3507 ; C₂₉H₄₈N₇O₉ requires 638.3508.



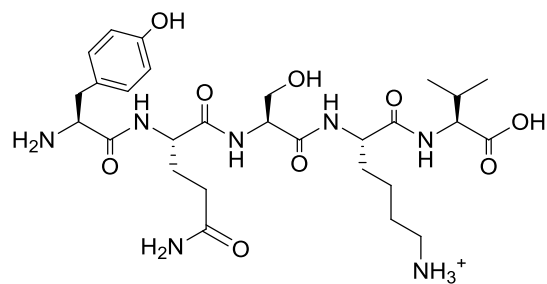
4.3.3 H₂N-YPSKL-CO₂H



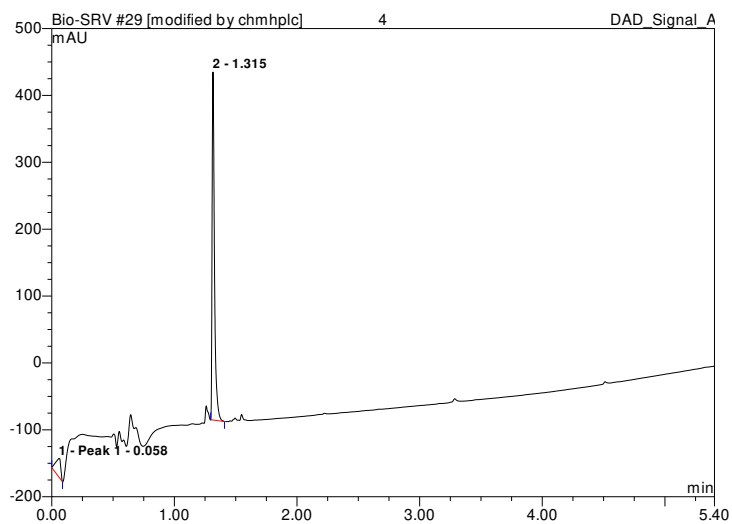
Yield = 33 mg; 62%. RP-HPLC Ascentis Express Peptide (ES - C18, 10 cm x 2.1 mm); Flow rate 0.5 ml min⁻¹; Gradient elution t = 0 min, MeCN:H₂O with 0.1 % TFA, 5:95; t = 5.0 min, 95:5, t = 5.4 min 98:2; Rt 1.7 min, *m/z* (ES) found [M+H]⁺ 607.3455; C₂₉H₄₇N₆O₈ requires 607.3450.



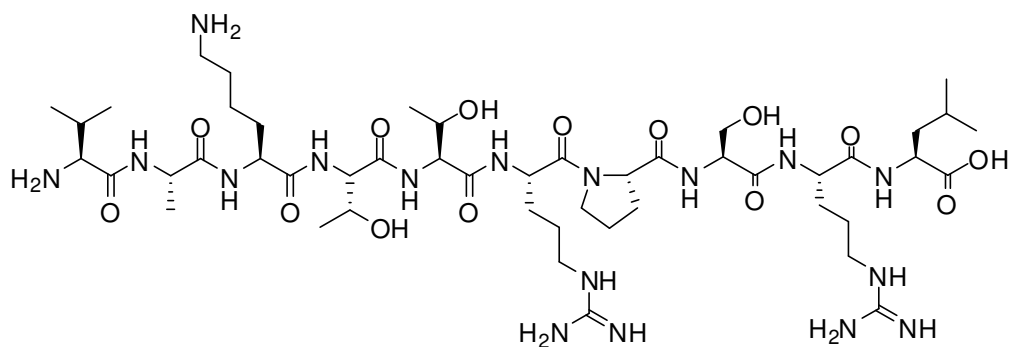
4.3.4 H₂N-YQSKV-CO₂H



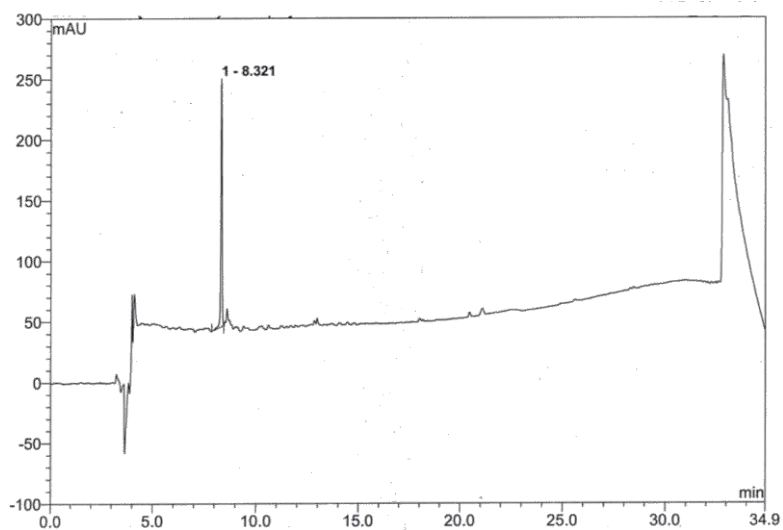
Yield = 30.2 mg; 59%. RP-HPLC Ascentis Express Peptide (ES - C18, 10 cm x 2.1 mm); Flow rate 0.5 ml min⁻¹; Gradient elution t = 0 min, MeCN:H₂O with 0.1 % TFA, 5:95; t = 5.0 min, 95:5, t = 5.4 min 98:2; Rt 1.3 min, *m/z* (ES) found [M+H]⁺ 624.3354; C₂₈H₄₆N₇O₉ requires 624.3352.



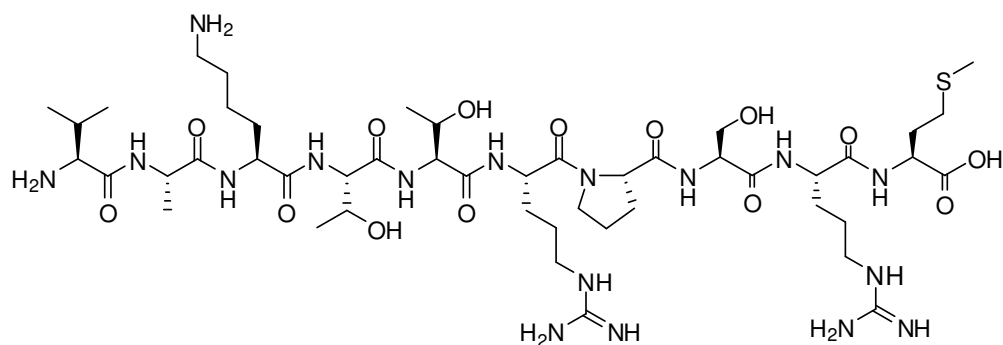
4.3.5 H₂N-VAKTTRPSRL-CO₂H



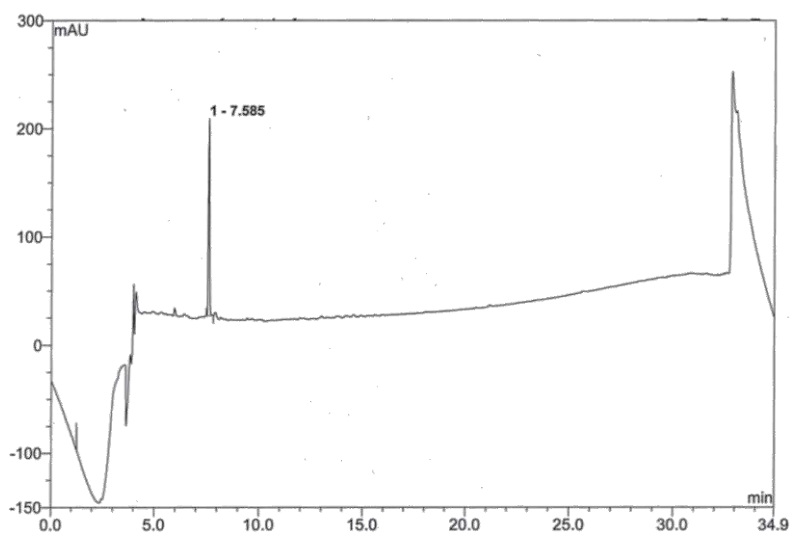
Yield = 47.9 mg, 50%. RP-HPLC Jupiter 4 μ Proteo 90 Å (C12 10 cm X 2 mm); Flow rate 1 ml min⁻¹; Gradient elution t = 0 min, MeCN:H₂O with 0.1 % TFA, 5:95; t = 30 min, 25:75; t = 32 min 98:2; Rt 8.3 min, *m/z* (ES) found [M+H]⁺ 1128.6852; C₄₈H₉₀N₁₇O₁₄ requires 1128.6848.



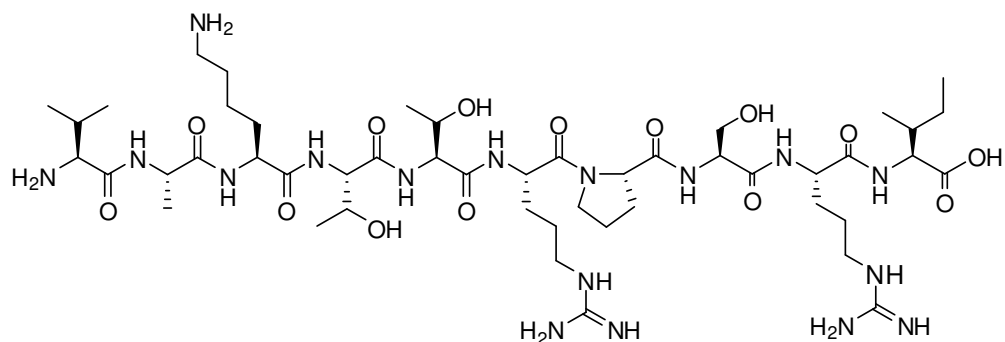
4.3.6 H₂N-VAKTTRPSRM-CO₂H



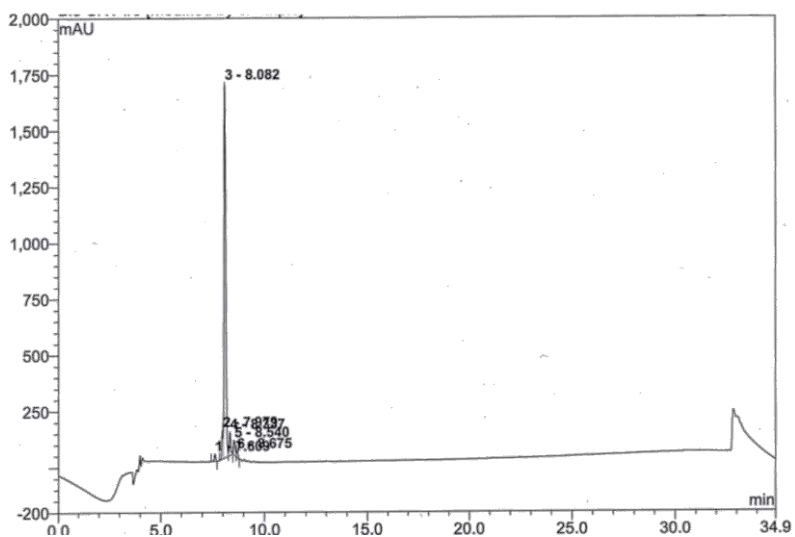
Yield = 50.2 mg, 52%. RP-HPLC Jupiter 4 μ Proteo 90 Å (C12 10 cm X 2 mm); Flow rate 1 ml min⁻¹; Gradient elution t = 0 min, MeCN:H₂O with 0.1 % TFA, 0:1; t = 30 min, 15:85, t = 32 min 98:2; Rt 7.6 min; *m/z* (ES) found [M+H]⁺ 1146.6447; C₄₇H₈₈N₁₇O₁₄S requires 1146.6442.



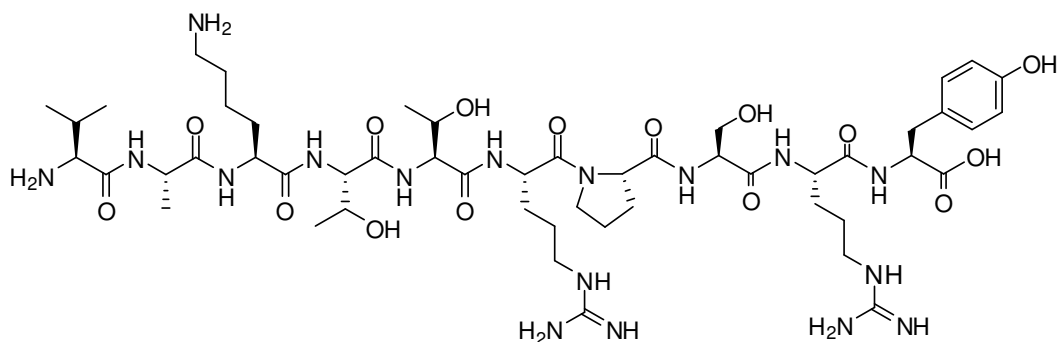
4.3.7 H₂N-VAKTTRPSRI-CO₂H



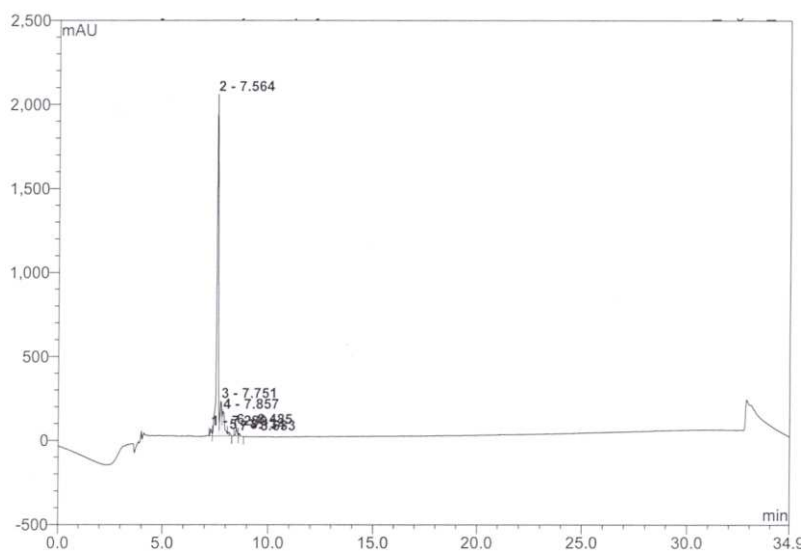
Yield = 48.1 mg, 51%. RP-HPLC Jupiter 4 μ Proteo 90 \AA (C12 10 cm X 2 mm); Flow rate 1 ml min⁻¹; Gradient elution t = 0 min, MeCN:H₂O with 0.1 % TFA, 5:95; t = 30 min, 25:75, t = 32 min 98:2; Rt 8.0 min, *m/z* (ES) found [M+H]⁺ 1128.6850; C₄₈H₉₀N₁₇O₁₄ requires 1128.6848



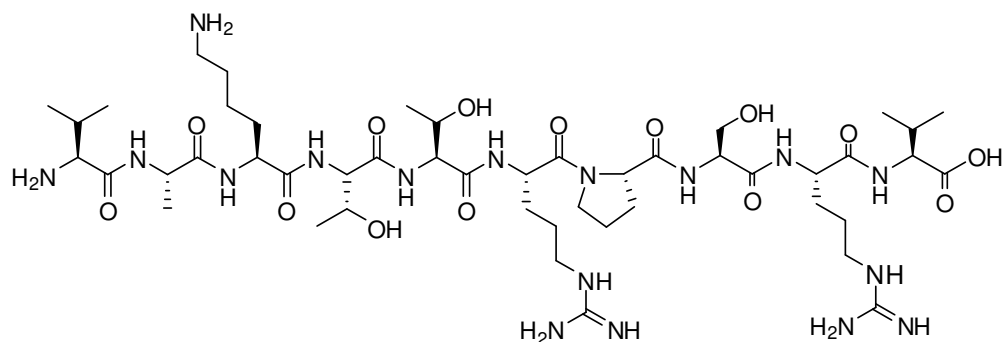
4.3.8 H₂N-VAKTTRPSRY-CO₂H



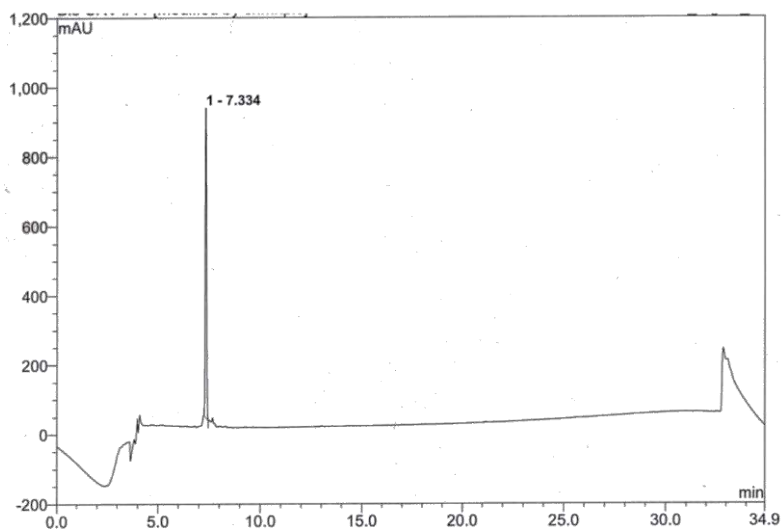
Yield = 48.1 mg, 51%. RP-HPLC Jupiter 4 μ Proteo 90 Å (C12 10 cm X 2 mm); Flow rate 1 ml min⁻¹; Gradient elution t = 0 min, MeCN:H₂O with 0.1 % TFA, 5:95; t = 30 min, 25:75, t = 32 min 98:2; Rt 7.6 min, *m/z* (ES) found [M+H]⁺ 1178.6638; C₅₁H₈₈N₁₇O₁₅ requires 1178.6640.



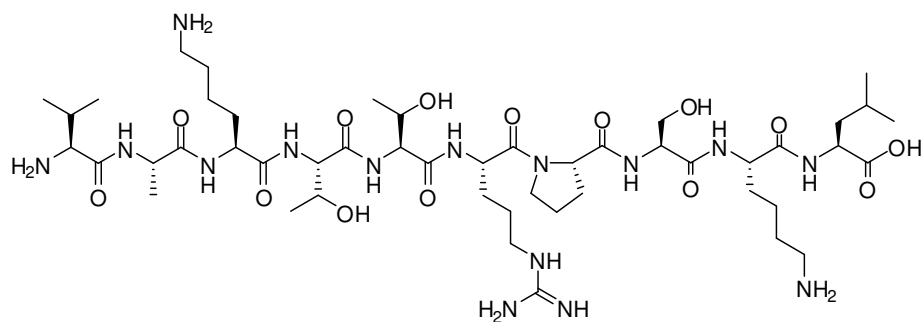
4.3.9 H₂N-VAKTTRPSRV-CO₂H



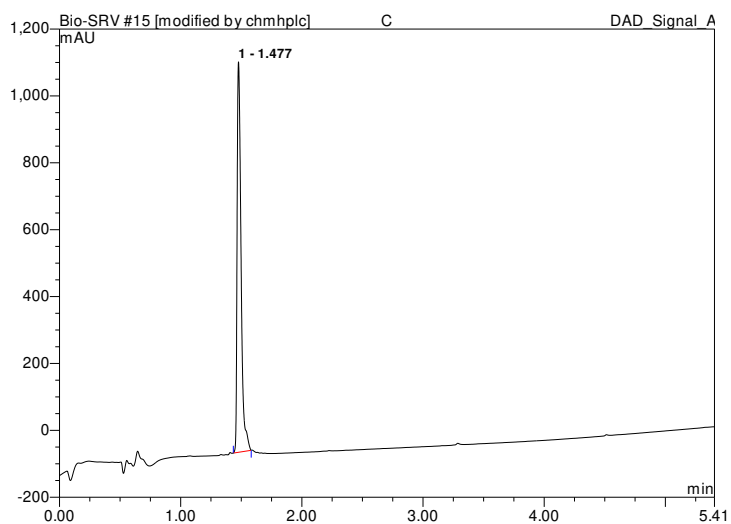
Yield = 47.4 mg, 52%. RP-HPLC Jupiter 4 μ Proteo 90 \AA ; Flow rate 1 ml min⁻¹; Gradient elution t = 0 min, MeCN:H₂O with 0.1 % TFA, 0:1; t = 30 min, 15:85, t = 32 min 98:2; Rt 7.3 min; *m/z* (ES) found [M+H]⁺ 1114.6696; C₄₈H₈₉N₁₆O₁₄ requires 1114.6691.



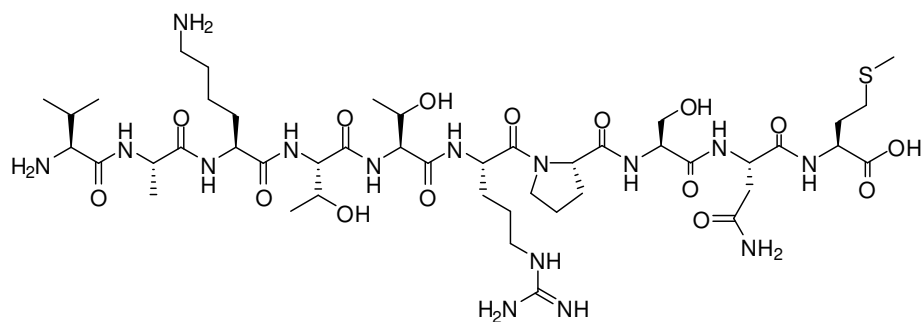
4.3.10 H₂N-VAKTTRPSKL-CO₂H



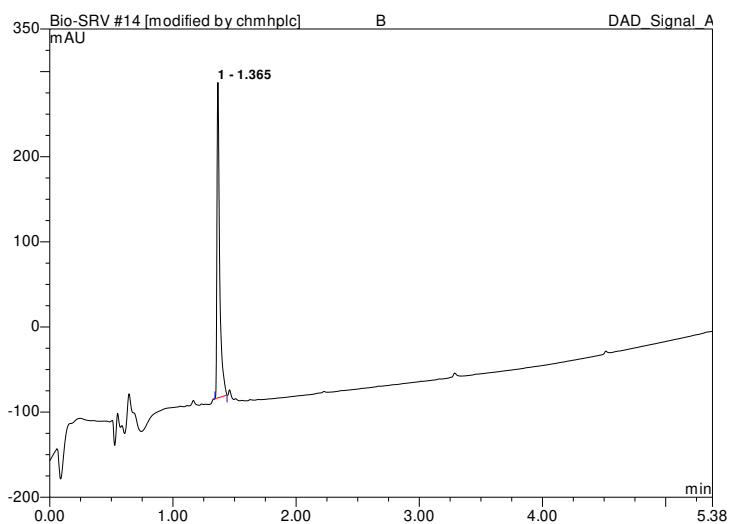
Yield = 46 mg, 50%. Ascentis Peptide; Flow rate 0.5 ml min⁻¹; Gradient elution t = 0 min, MeCN:H₂O with 0.1 % TFA, 5:95; t = 5.0 min, 95:5; t = 5.4 min 98:2; Rt 1.5 m/z (ES) found [M+H]⁺ 1100.6787; C₄₈H₉₀N₁₅O₁₄ requires 1100.6786



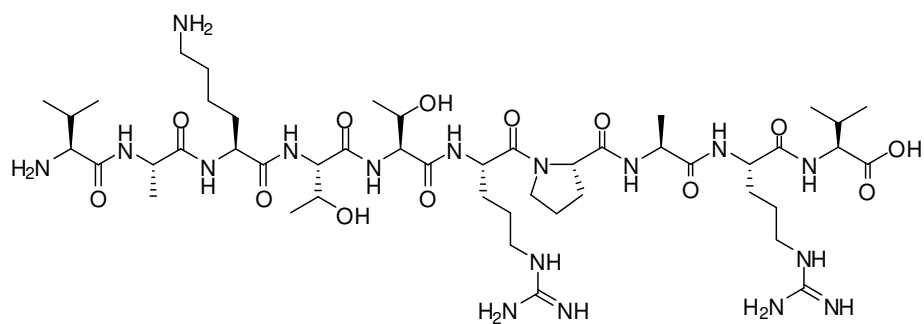
4.3.11 H₂N-VAKTTRPSNM-CO₂H



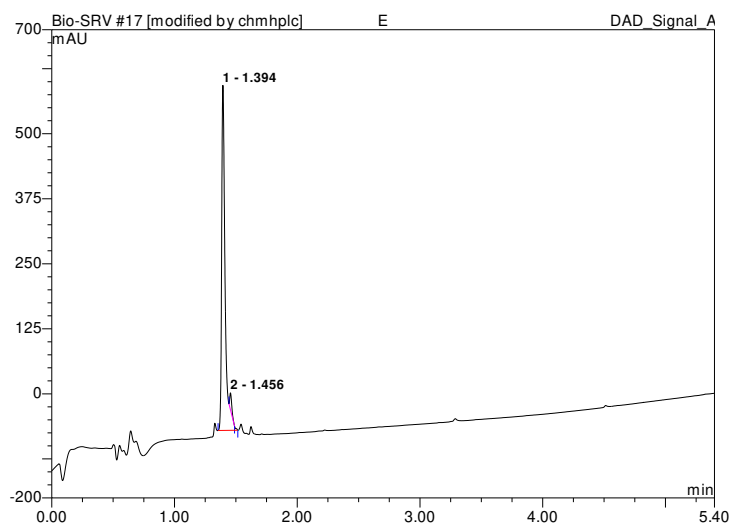
Yield = 45.2 mg, 48%. RP-HPLC Ascentis Express Peptide (ES - C18, 10 cm x 2.1 mm); Flow rate 0.5 ml min⁻¹; Gradient elution t = 0 min, MeCN:H₂O with 0.1 % TFA, 5:95; t = 5.0 min, 95:5, t = 5.4 min 98:2; Rt 1.4 min, *m/z* (ES) found [M+H]⁺ 1104.5759; C₄₅H₈₁N₁₅O₁₅S requires 1104.5757



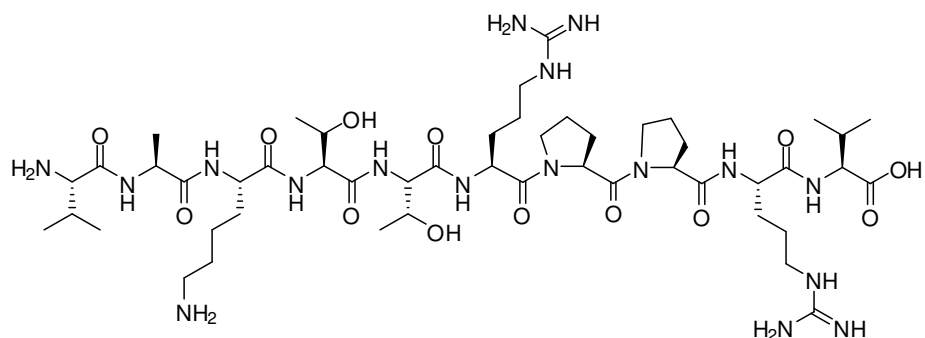
4.3.12 H₂N-VAKTTRPARV-CO₂H



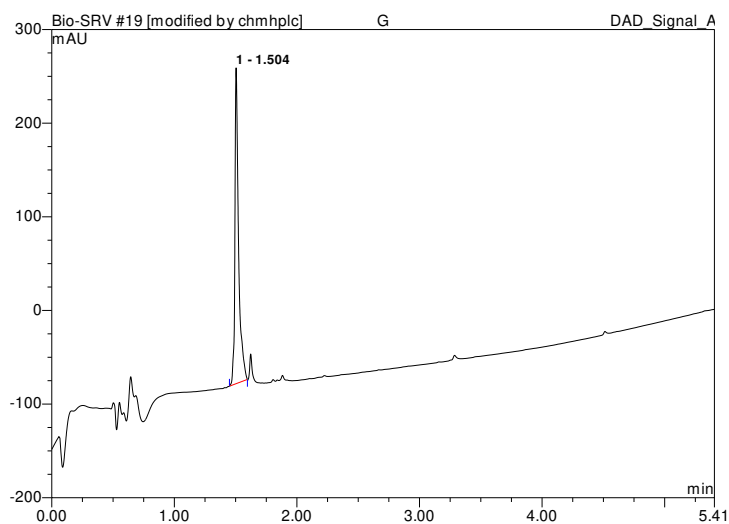
Yield = 47.1 mg; 51%. RP-HPLC Ascentis Express Peptide (ES - C18, 10 cm x 2.1 mm); Flow rate 0.5 ml min⁻¹; Gradient elution t = 0 min, MeCN:H₂O with 0.1 % TFA, 5:95; t = 5.0 min, 95:5, t = 5.4 min 98:2; Rt 1.4 min, *m/z* (ES) found [M+H]⁺ 1098.6746; C₄₇H₈₈N₁₇O₁₃ requires 1098.6742.



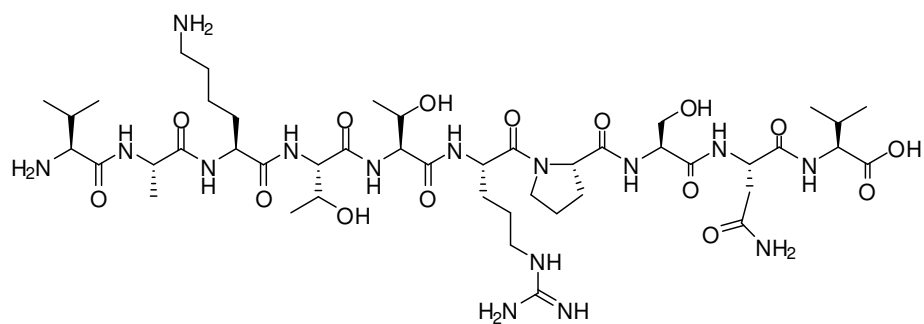
4.3.13 H₂N-VAKTTRPPRV-CO₂H



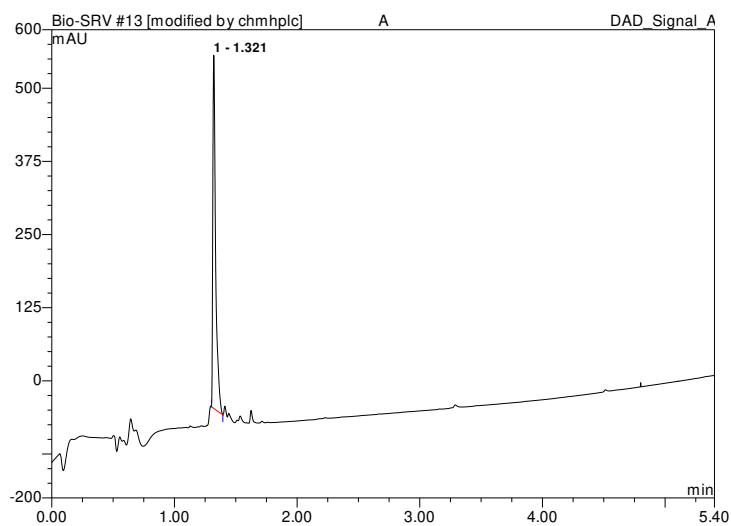
Yield = 46.9 mg; 50%. RP-HPLC Ascentis Express Peptide (ES - C18, 10 cm x 2.1 mm); Flow rate 0.5 ml min⁻¹; Gradient elution t = 0 min, MeCN:H₂O with 0.1 % TFA, 5:95; t = 5.0 min, 95:5, t = 5.4 min 98:2; Rt 1.5 min, *m/z* (ES) found [M+H]⁺ 1124.6901; C₄₉H₉₀N₁₇O₁₃ requires 1124.6899.



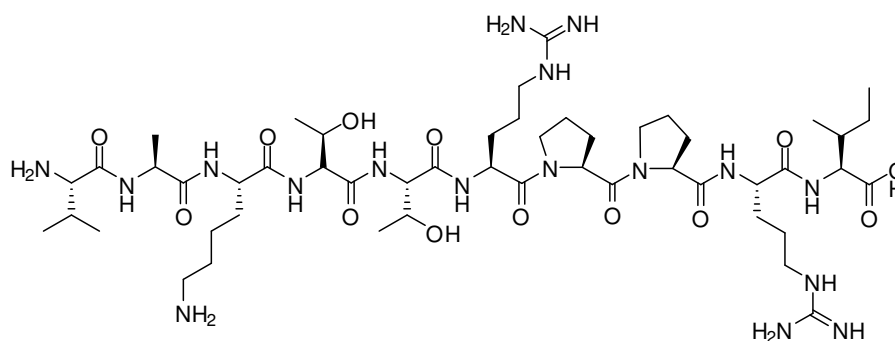
4.3.14 H₂N-VAKTTRPSNV-CO₂H



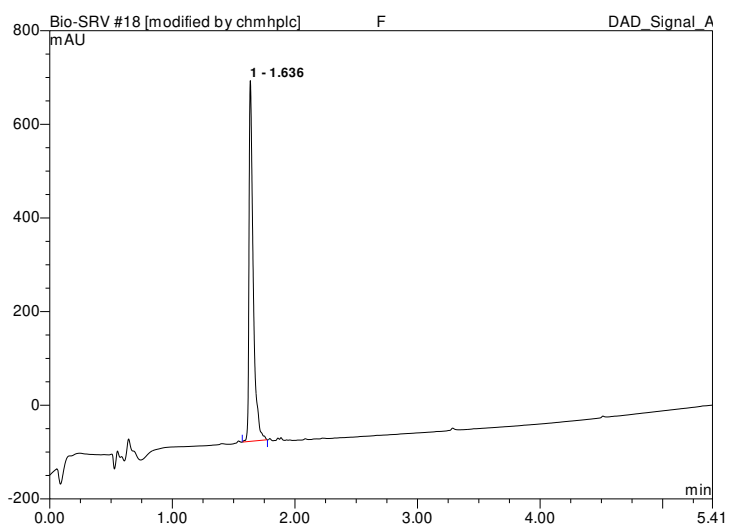
Yield = 39.6 mg; 45%. RP-HPLC Ascentis Express Peptide (ES - C18, 10 cm x 2.1 mm); Flow rate 0.5 ml min⁻¹; Gradient elution t = 0 min, MeCN:H₂O with 0.1 % TFA, 5:95; t = 5.0 min, 95:5, t = 5.4 min 98:2; Rt 1.3 min, *m/z* (ES) found [M+H]⁺ 1072.6104; C₄₅H₈₂N₁₅O₁₅ requires 1072.6109.



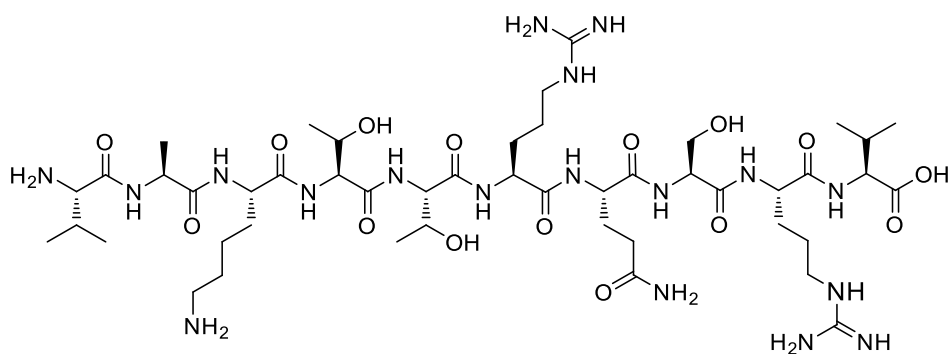
4.3.15 H₂N-VAKTTRPPRI-CO₂H



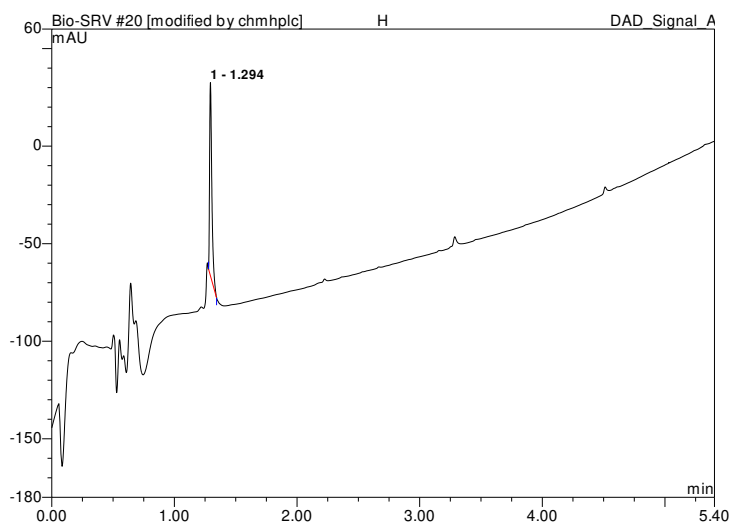
Yield = 39.6 mg; 48%. RP-HPLC Ascentis Express Peptide (ES - C18, 10 cm x 2.1 mm); Flow rate 0.5 ml min⁻¹; Gradient elution t = 0 min, MeCN:H₂O with 0.1 % TFA, 5:95; t = 5.0 min, 95:5, t = 5.4 min 98:2; Rt 1.6 min, *m/z* (ES) found [M+H]⁺ 1138.7058; C₅₀H₉₂N₁₇O₁₃ requires 1138.7055.



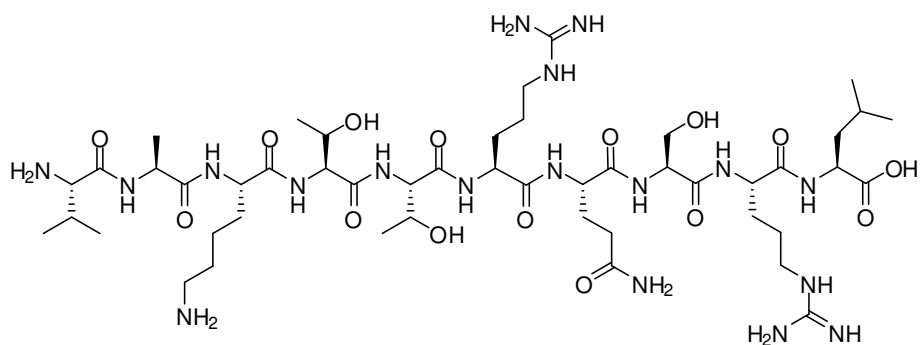
H₂N-VAKTTRQSRV-CO₂H



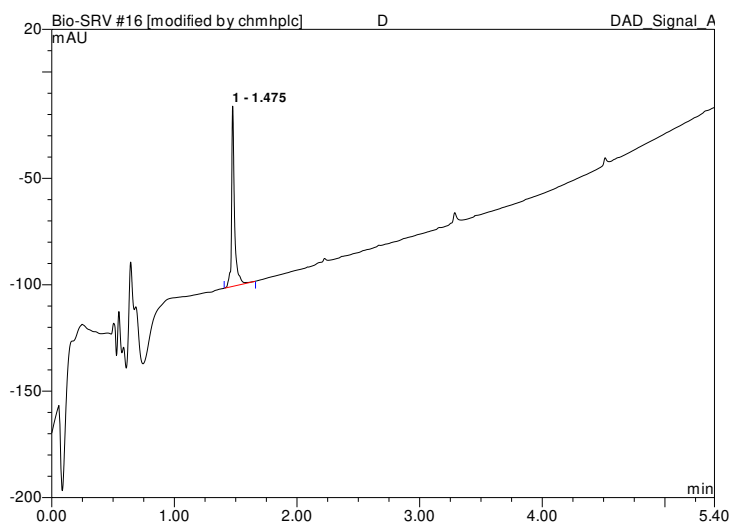
Yield = 39.6 mg; 58%. RP-HPLC Ascentis Express Peptide (ES - C18, 10 cm x 2.1 mm); Flow rate 0.5 ml min⁻¹; Gradient elution t = 0 min, MeCN:H₂O with 0.1 % TFA, 5:95; t = 5.0 min, 95:5, t = 5.4 min 98:2; Rt 1.3 min, *m/z* (ES) found [M+3H]³⁺ 382.5629; C₄₇H₉₁N₁₈O₁₅ requires 382.5632.



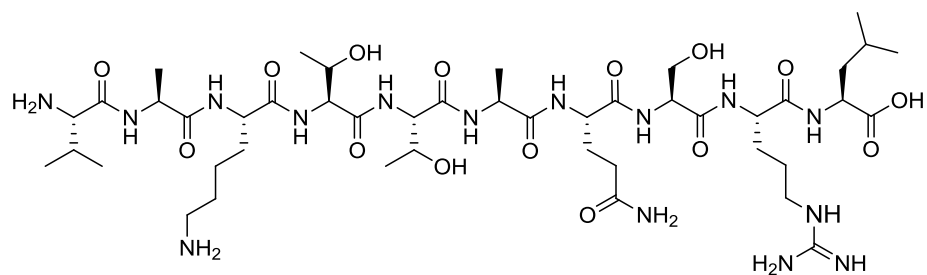
4.3.16 H₂N-VAKTTRQSRL-CO₂H



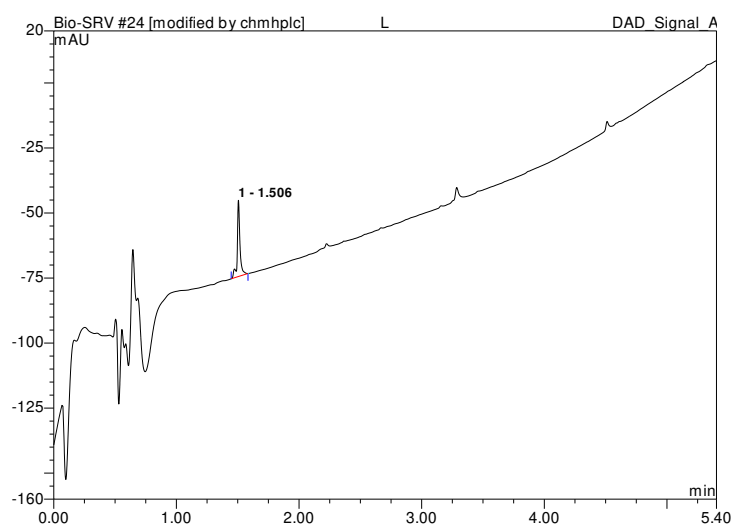
Yield = 54.1 mg; 55%. RP-HPLC Ascentis Express Peptide (ES - C18, 10 cm x 2.1 mm); Flow rate 0.5 ml min⁻¹; Gradient elution t = 0 min, MeCN:H₂O with 0.1 % TFA, 5:95; t = 5.0 min, 0:100, t = 5.4 min 98:2; Rt 1.5 min, *m/z* (ES) found [M+2H]²⁺ 580.3495; C₄₈H₉₂N₁₈O₁₅ requires 580.3490.



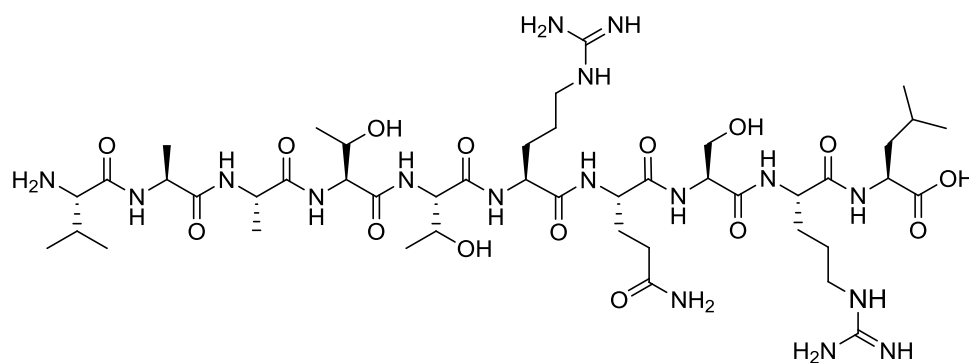
4.3.17 H₂N-VAKTTAQSRL-CO₂H



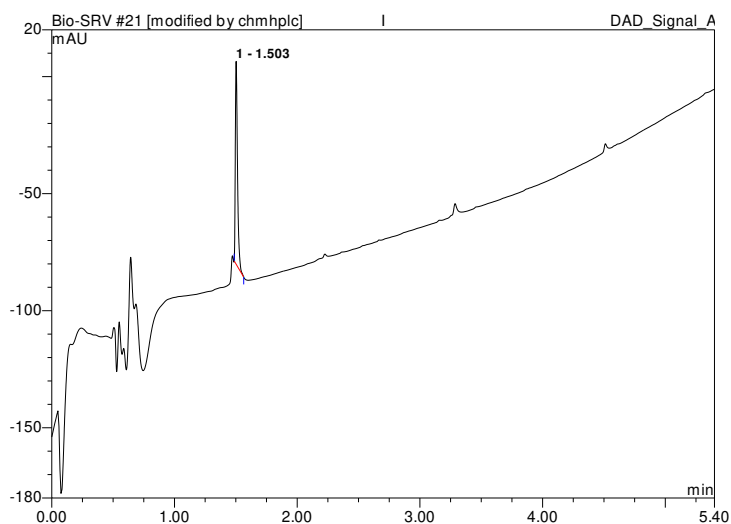
Yield = 36.9 mg; 39%. RP-HPLC Ascentis Express Peptide (ES - C18, 10 cm x 2.1 mm); Flow rate 0.5 ml min⁻¹; Gradient elution t = 0 min, MeCN:H₂O with 0.1 % TFA, 5:95; t = 5.0 min, 0:100, t = 5.4 min 98:2; Rt 1.5 min, *m/z* (ES) found [M+H]⁺ 1074.6261; C₄₆H₈₅N₁₄O₁₅ requires 1074.6266.



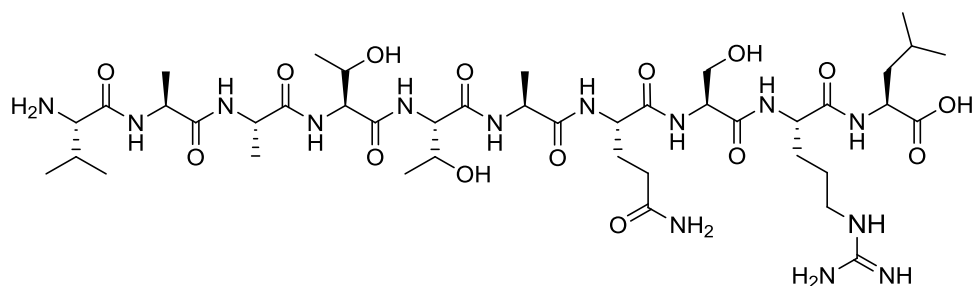
4.3.18 H₂N-VAATTRQSRL-CO₂H



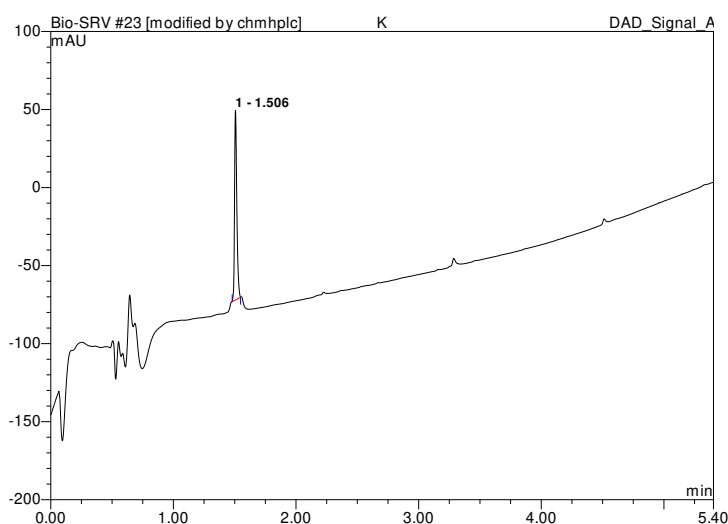
Yield = 35.5 mg; 38%. RP-HPLC Ascentis Express Peptide (ES - C18, 10 cm x 2.1 mm); Flow rate 0.5 ml min⁻¹; Gradient elution t = 0 min, MeCN:H₂O with 0.1 % TFA, 5:95; t = 5.0 min, 0:100, t = 5.4 min 98:2; Rt 1.5 min, *m/z* (ES) found [M+H]⁺ 1102.6324; C₄₆H₈₅N₁₆O₁₅ requires 1102.6327



4.3.19 H₂N-VAATTAQSRL-CO₂H



Yield = 25.9 mg; 30%. RP-HPLC Ascentis Express Peptide (ES - C18, 10 cm x 2.1 mm); Flow rate 0.5 ml min⁻¹; Gradient elution t = 0 min, MeCN:H₂O with 0.1 % TFA, 5:95; t = 5.0 min, 0:100, t = 5.4 min 98:2; Rt 1.5 min, *m/z* (ES) found [M+H]⁺ 1016.5662; C₄₃H₇₈N₁₃O₁₅ requires 1016.5662.



5 References

- [1] Lakowicz, J. R., Principles of Fluorescence Spectroscopy, **2006**, Springer.
- [2] Moerke, N. J., "Fluorescence Polarization (FP) Assays for Monitoring Peptide-Protein or Nucleic Acid-Protein Binding", Current Protocols in Chemical Biology, **2009**, 1,1.
- [3] Gatto, G. J, Maynard, E. J. , Guerrero, A. L., Geisbrecht, B. V., Gould, S. J. , Berg, J. M., Correlating Structure and Affinity for PEX5:PTS1 Complexes", Biochemistry, **2003**, 1660.
- [4] Nikolovska-Coleska, Z., Wang, R., Fang X., Pan, H., Tomita, Y., Li, P., Roller, P. P., Krajewski, K., Saito, N. G., Stuckey, J. A., Wang, S., "Development and optimization of a binding assay for the XIAP BIR3 domain using fluorescence polarization", Analytical Biochemistry, **2004**, 261-273.