

promoting access to White Rose research papers



Universities of Leeds, Sheffield and York
<http://eprints.whiterose.ac.uk/>

This is the published version of a supplement in **G3: Geochemistry, Geophysics, Geosystems: an electronic journal of the earth sciences, 15 (1)**

White Rose Research Online URL for this paper:

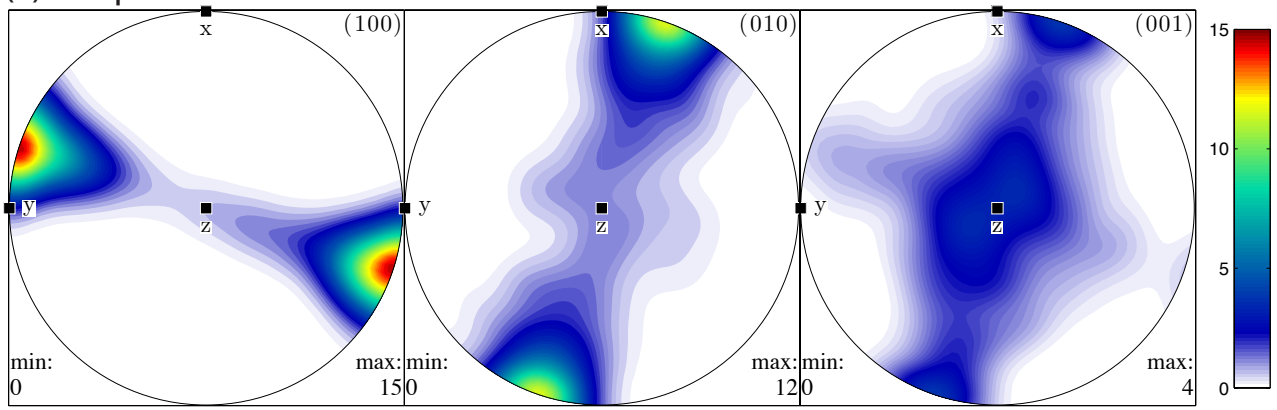
<http://eprints.whiterose.ac.uk/id/eprint/77866>

Published article:

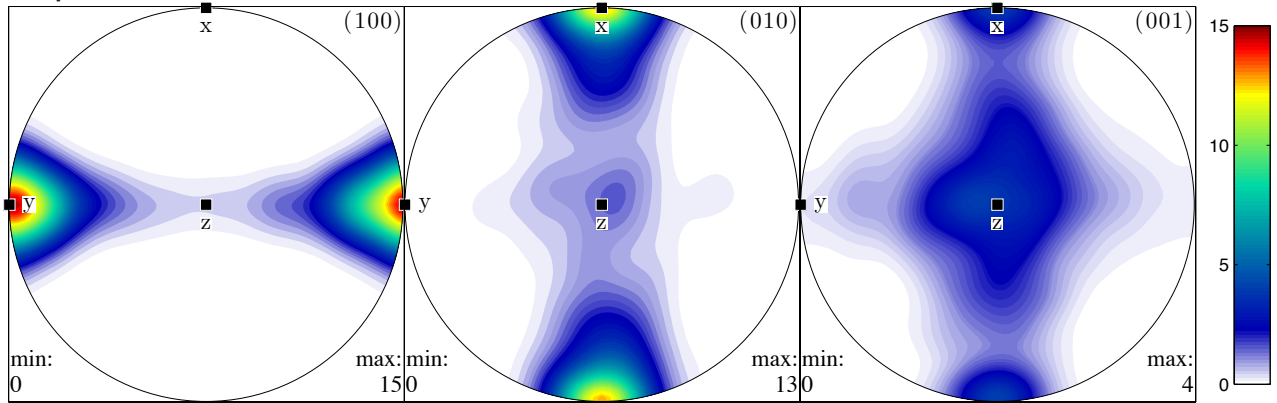
Di Leo, JF, Walker, AM, Li, Z-J, Wookey, J, Ribe, NM, Kendall, J-M and Tommasi, A (2014) *Development of texture and seismic anisotropy during the onset of subduction*. G3: Geochemistry, Geophysics, Geosystems: an electronic journal of the earth sciences, 15 (1). 192 - 212. ISSN 1525-2027

<http://dx.doi.org/10.1002/2013GC005032>

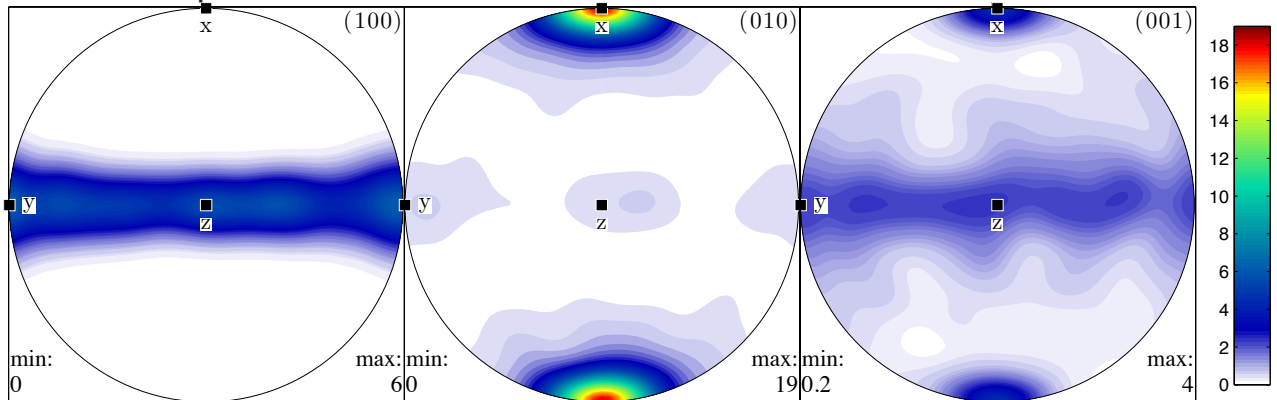
(a) simple shear



(b) pure shear



(c) axial compression



(d) axial extension

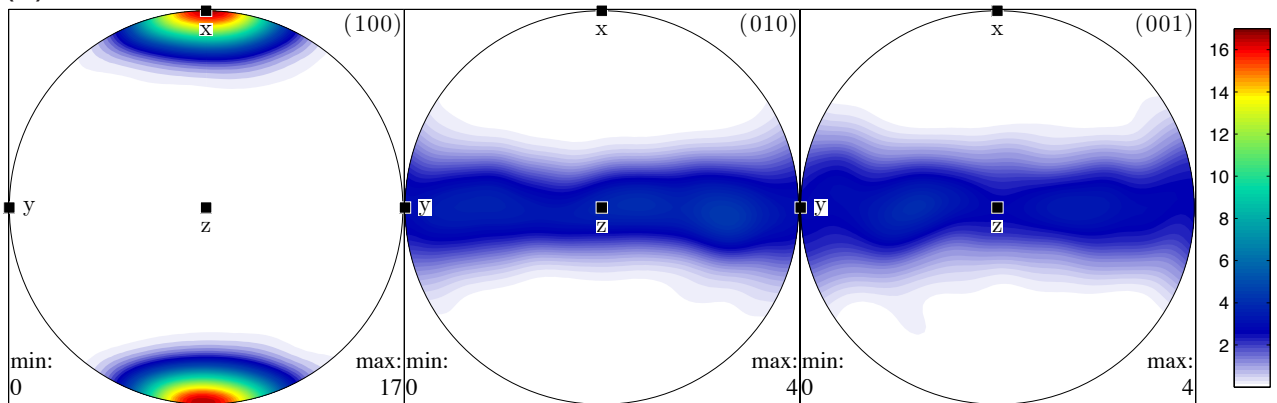


Fig. S1: Textures for end-member cases of (a) simple shear (sinistral), (b) pure shear, (c) axial compression, and (d) axial extension. Compression in (b) and (c) is in the x-direction. Extension in (d) is in the x-direction.