



This is a repository copy of *Imaging live bacteria at the nanoscale: comparison of immobilisation strategies*.

White Rose Research Online URL for this paper:
<http://eprints.whiterose.ac.uk/153962/>

Version: Published Version

Article:

Benn, G., Pyne, A.L.B. orcid.org/0000-0002-2658-8987, Ryadnov, M.G. et al. (1 more author) (2019) *Imaging live bacteria at the nanoscale: comparison of immobilisation strategies*. *The Analyst*, 144 (23). pp. 6944-6952. ISSN 0003-2654

<https://doi.org/10.1039/c9an01185d>

Reuse

This article is distributed under the terms of the Creative Commons Attribution (CC BY) licence. This licence allows you to distribute, remix, tweak, and build upon the work, even commercially, as long as you credit the authors for the original work. More information and the full terms of the licence here:
<https://creativecommons.org/licenses/>

Takedown

If you consider content in White Rose Research Online to be in breach of UK law, please notify us by emailing eprints@whiterose.ac.uk including the URL of the record and the reason for the withdrawal request.



eprints@whiterose.ac.uk
<https://eprints.whiterose.ac.uk/>



Cite this: *Analyst*, 2019, **144**, 6944

Imaging live bacteria at the nanoscale: comparison of immobilisation strategies

Georgina Benn,  ^{a,b,c} Alice L. B. Pyne,  ^{a,d} Maxim G. Ryadnov  ^{c,e} and Bart W. Hoogenboom  ^{*a,b,f}

Atomic force microscopy (AFM) provides an effective, label-free technique enabling the imaging of live bacteria under physiological conditions with nanometre precision. However, AFM is a surface scanning technique, and the accuracy of its performance requires the effective and reliable immobilisation of bacterial cells onto substrates. Here, we compare the effectiveness of various chemical approaches to facilitate the immobilisation of *Escherichia coli* onto glass cover slips in terms of bacterial adsorption, viability and compatibility with correlative imaging by fluorescence microscopy. We assess surface functionalisation using gelatin, poly-L-lysine, Cell-Tak™, and Vectabond®. We describe how bacterial immobilisation, viability and suitability for AFM experiments depend on bacterial strain, buffer conditions and surface functionalisation. We demonstrate the use of such immobilisation by AFM images that resolve the porin lattice on the bacterial surface; local degradation of the bacterial cell envelope by an antimicrobial peptide (Cecropin B); and the formation of membrane attack complexes on the bacterial membrane.

Received 27th June 2019,
Accepted 10th October 2019

DOI: 10.1039/c9an01185d

rsc.li/analyst

Introduction

Live single-cell imaging can advance the current understanding of cellular heterogeneity in bacterial populations at the level of an individual cell as a function of time. Although the results of traditional cell culture measurements dealing with large cell numbers are statistically significant, they cannot address the behaviour of individual cells because of the averaging on which they rely. Higher-resolution methodologies are necessary to access single-cell analysis and complement these measurements.¹ High-resolution imaging techniques with integrated microfluidic devices and cell tracking software have provided qualitatively new insights into cellular processes. For example, fluorescence microscopy used for single-molecule tracking inside live bacteria helped to reveal that the *lac* transcription factor finds its binding site *via* the facilitated diffusion model.² Microfluidic devices are also powerful tools for single cell bacterial analysis. For example, microfluidic devices have been combined with cell tracking, to enable the

rapid detection of antibiotic resistance in clinical isolates in under 10 minutes.³ Arguably, however, atomic force microscopy (AFM) is the technique of choice for accurate and label-free molecular cell measurements.^{4–9}

Indeed, AFM performed in water or physiological buffers, including cell culture media, allows the acquisition of nanometre resolution images with no ensemble averaging, under physiological conditions.¹⁰ The principle of AFM is to use a sharp tip on a cantilever to directly probe the features of an analyte immobilised on a surface. By scanning across the surface of the analyte the cantilever allows the build-up of a contour or topography map of the surface features, line by line (Fig. 1). The resolution of AFM is in the nanometre range, but it can be performed over relatively large areas and in combination with brightfield microscopy. This makes AFM a powerful technique to study individual molecules, cells and even whole organisms. Notable examples of AFM for cell imaging revealed the dynamics of filopodia on live hippocampal neurons;⁶ a decrease in red blood cell roughness with aging;¹¹ a net-like structure of porins in the outer membranes of Gram-negative bacteria;^{4,12} and differences in action of antimicrobial peptides on bacteria in water or LB broth¹³ and mechanistic insights into new poration mechanisms.¹⁴ However, regardless of application, AFM, like other single-cell techniques, relies on cells remaining immobilised to a substrate.

The physical nature of AFM means that cells must be stably adhered to a substrate. Others have used different methods to promote bacterial adhesion for AFM imaging with variable successes. Firstly, microwells can be used to physically trap

^aLondon Centre for Nanotechnology, University College London, London WC1H 0AH, UK. E-mail: b.hoogenboom@ucl.ac.uk

^bInstitute of Structural and Molecular Biology, University College London, London WC1E 6BT, UK

^cNational Physical Laboratory, Hampton Road, Teddington TW11 0LW, UK

^dDepartment of Materials Science and Engineering, University of Sheffield, S1 3JD, UK

^eDepartment of Physics, King's College London, Strand Lane, London WC2R 2LS, UK

^fDepartment of Physics & Astronomy, University College London, London WC1E 6BT, UK



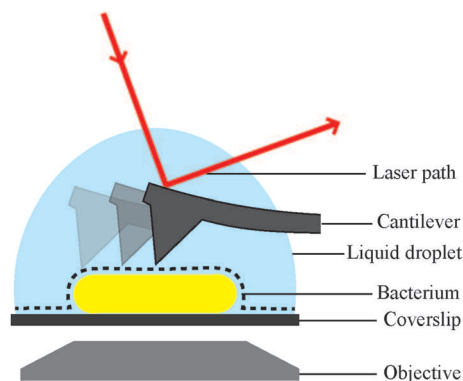


Fig. 1 Schematic of a bacterial cell attached to a glass substrate for microscopic analysis in solution. Inverted optic microscopy and complementary fluorescence microscopy (via objective below) can be used to find and inspect cells at low resolution. For AFM analysis, the bacterial surface is traced by a sharp needle on a flexible cantilever. The bending of the cantilever is a measure of the force between the surface and the AFM probe, this is detected via the deflection of a laser beam.

bacteria.¹⁵ This can be achieved in a range of buffers including growth media and requires no chemical interactions between substrate and bacteria, thus leaving cell viability unaffected.¹⁵ However, the trapping of cells requires appropriately sized holes, which itself depends on the species of bacteria. *E. coli* and *B. subtilis* have been immobilised using a microfluidic device that also allowed simultaneous fluorescence imaging, but the fabrication of these devices is time consuming.^{13,15} To immobilise *Mycobacterium* species, polycarbonate filters can be used,¹⁶ but the efficiency of this approach was reported as low and was not feasible for most species due to their size.¹⁷ A covalent attachment of bacteria to a surface could affect cell viability and should be avoided.¹⁵ The problems encountered in immobilisation are many and depend on the type of sample. Bacteria are difficult to immobilise because they are small and curved, providing little surface area for adhesion.¹⁷ This is particularly true for spherical cells like *Staphylococcus aureus*.¹⁵ Conversely, if a sample is too large a different technique may be required; for example, Akhatova *et al.* found that live *C. elegans* nematodes may be immobilised using a polyelectrolyte LbL film. However, the larger *T. aceti* nematode would only adhere to Tissucol bioadhesive glue.¹⁸

Generally, mica is the most common substrate for AFM as it can easily be cleaved to provide an atomically flat surface.¹⁹ For cell imaging, however, it is more convenient to have visual pre-scanning by an inverted optical microscope, so glass coverslips or slides are used to find and select cells for high-resolution AFM imaging.^{20,22} Ensuring the adherence of cells onto glass or mica is a prerequisite for AFM sample preparation. An ultimately reliable immobilisation method would be compatible with physiological buffers and have no effects on cell viability or morphology. Furthermore, such a method should meet time considerations of AFM imaging, particularly when visualising cellular or cell-related processes over prolonged periods of time. Thus, the choice of immobilisation methods for accu-

rate and reliable AFM imaging is limited to those that can satisfy the fairly stringent suitability requirements for sample preparation.

Here we compare four adhesion methods for two different strains of *E. coli*. This bacterium is one of the most common Gram-negative pathogens. We focus on Gram-negative cells because they are clinically important, being responsible for a significant burden to healthcare worldwide,²¹ and have been used extensively in AFM studies of bacteria so far.^{4,12,13,22,23}

Materials and methods

Bacterial strains and preparation

For mid-log phase bacteria, an *E. coli* MG1655 or BL21 (provided by the Rooijackers lab, University Medical Centre Utrecht) colony was picked from a LB-agar plate and grown in 3 mL LB broth (Lennox) for 3 hours at 37 °C in a shaking incubator. 500 μ L of culture was then spun at 5000 rpm for 2 minutes, the supernatant removed and bacteria resuspended in 500 μ L of HEPES buffer (20 mM HEPES, 120 mM NaCl, pH 7.4), PBS (10 mM phosphate buffer, 137 mM NaCl, 2.7 mM KCl, pH 7.4), PB (10 mM phosphate buffer, pH 7.4) or milliQ water (mQ). Spinning and resuspension was repeated 3 more times to remove all LB.

Glass cleaning

13 mm glass coverslips (VWR) were placed in a rack and rinsed in a stream of mQ. They were then sonicated in 2% SDS at 37 kHz and 100% power in a Fisherbrand™ bath sonicator (Fisher Scientific) for 10 minutes. Next, they were rinsed and soaked in mQ, followed by ethanol and dried with nitrogen. They were then plasma cleaned at 70% power for 2 minutes in a plasma cleaner (Zepto, Diener Electronic). The whole procedure was then repeated once more and coverslips functionalised as described below. Coverslips were used immediately after preparation and not stored.

Bacteria immobilisation

100 μ L of bacteria in HEPES, PBS, PB or mQ was added to each fully prepared coverslip (see below) and incubated at room temperature for 15 minutes on gelatin, 5 minutes on PLL and 30 minutes on Cell-Tak™ or Vectabond®. Unadhered bacteria were washed 3 times by rinsing in 1 mL of an appropriate buffer. Care was taken to avoid drying the sample out at any point. It is worth noting that Vectabond® coated glass is hydrophobic: extra care was taken not to dislodge the droplet.

Glass functionalisation

Gelatin. Gelatin solution was prepared by adding 0.5 g of gelatin (G6144, Sigma) to 100 mL of mQ water just off the boil. The mixture was then swirled until all gelatin had dissolved and the temperature had dropped to 60–70 °C.²⁴ Freshly cleaned coverslips were then dipped into the warm gelatin, removed and balanced on their edges until dry. Coverslips were then glued to clean glass slides using biocompatible glue



(Reprorubber thin pour, Flexbar, NY). Bacteria were added as described above.

Poly-L-lysine. Clean glass coverslips were placed flat on a clean slide and a 100 μL droplet of 0.01% poly-L-lysine (P4832, Sigma) was added. After 5 minutes at room temperature, the coverslips were rinsed in a stream of mQ, dried in nitrogen and glued to clean glass slides using biocompatible glue. Bacteria were added as described above.

Cell-Tak™. Clean coverslips were glued to glass slides using biocompatible glue. A Cell-Tak™ solution was then prepared by mixing 1 mL 0.1 M sodium bicarbonate, pH 8.0 with 40 μL Cell-Tak™ (BD Diagnostics, USA) and 20 μL 1 M NaOH. 100 μL of this solution was applied to a glued down coverslip and incubated for 30 minutes at room temperature. Coverslips were then rinsed with a stream of mQ and nitrogen dried. Bacteria were added as described above.

Vectabond®. Cleaned coverslips were put into a rack and submerged in 50 mL acetone for 5 minutes, then moved to a 50 : 1 solution of acetone : Vectabond® (Vector Laboratories, USA) for 5 minutes. Finally, coverslips were dipped several times in mQ, nitrogen dried and glued to clean glass slides using biocompatible glue. Bacteria were added as described above.

Determining bacterial adhesion and survival

Bacteria were imaged immediately after immobilisation (data not shown) and two hours after immobilisation, using an Andor Zyla 5.5 USB3 fluorescence camera on an Olympus IX 73 inverted optical microscope. Cell death of bacteria was assessed by adding 1 μL of SYTOX™ green nucleic acid stain (S7020, Sigma) to the sample to mark dead cells. Brightfield and fluorescence images were taken of the same region to calculate the number of cells adhered and the percentage of those that were dead. Images used in Fig. 2 and 3 have been cropped and the contrast enhanced in FIJI-ImageJ²⁵ to show bacterial cells more clearly.

Image analysis was performed using FIJI-ImageJ,²⁵ with settings and parameters as follows. The number of bacteria in brightfield and SYTOX™ images was calculated by cropping each image, then picking bacteria using ImageJ macros. Images were cropped to ensure that the subsequent analysis was only performed on the part of the (very large view) images that was in focus. To facilitate comparison between data sets (and reduce the risk of human bias), an ImageJ macro was used to crop the same region of every image. Depending on the quality of image and number of bacteria in each field of

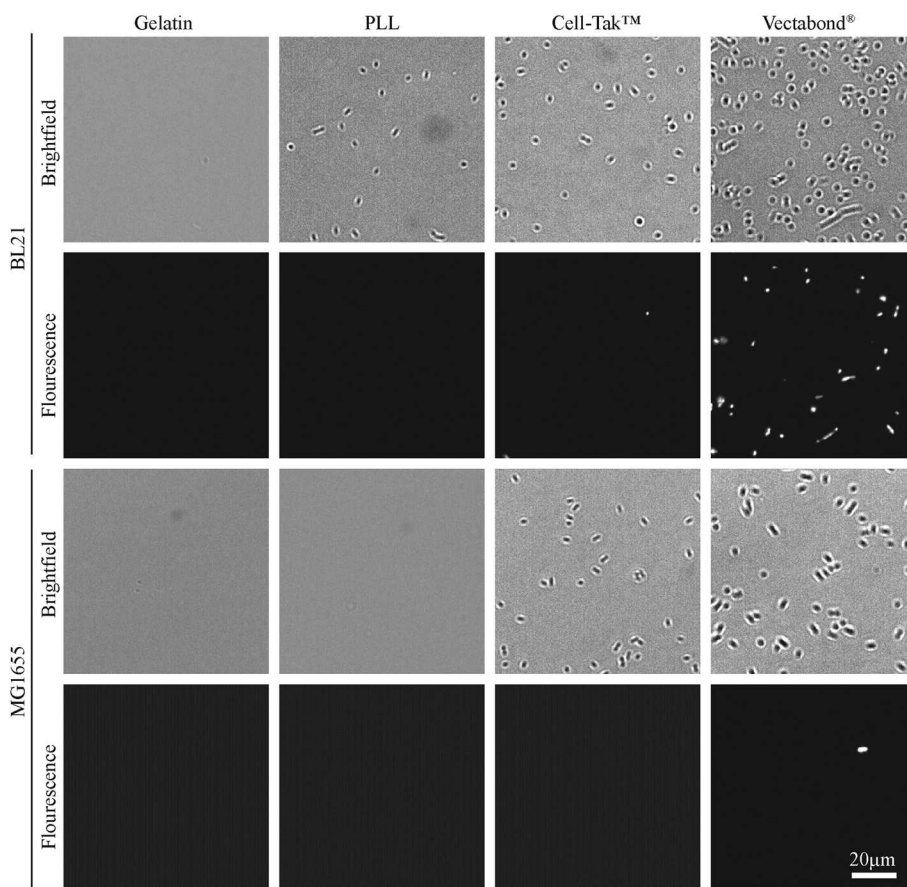


Fig. 2 Representative brightfield and fluorescence images of *E. coli* cells (BL21 and MG1655) immobilised on different coatings in HEPES buffer. Fluorescent bacteria are labelled with SYTOX® green dead cell stain.



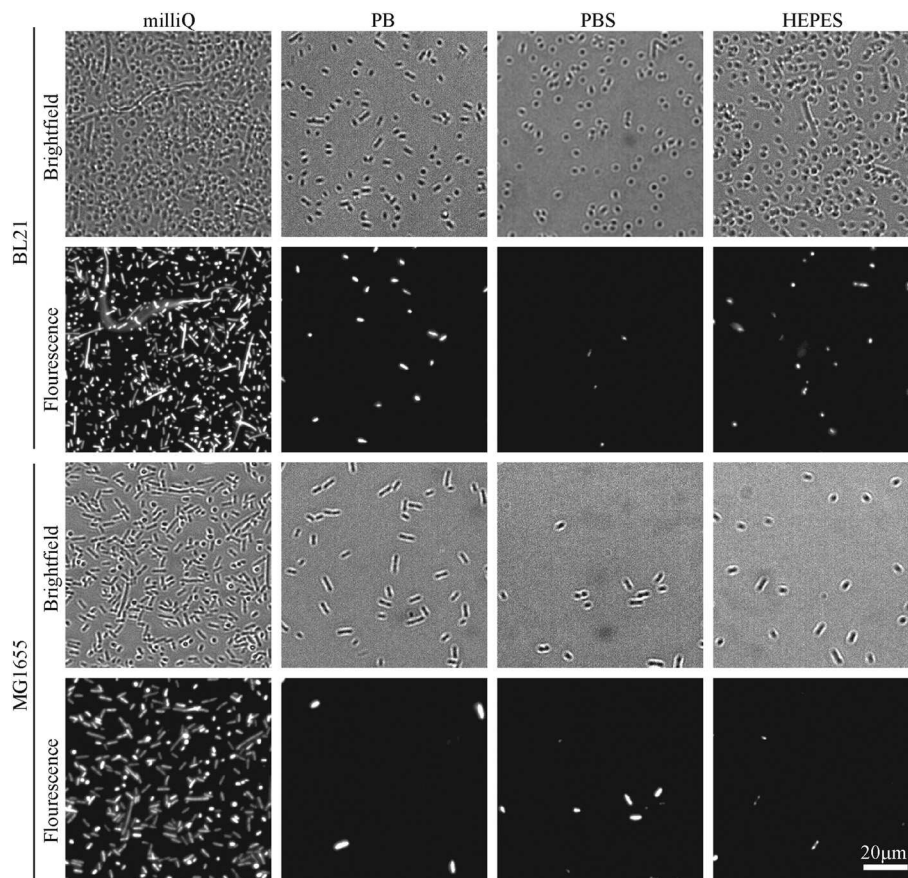


Fig. 3 Representative brightfield and fluorescence microscopy images of *E. coli* cells (BL21 and MG1655) immobilised on Vectabond® coated coverslips under different buffer conditions. Fluorescent bacteria are labelled with SYTOX® green dead cell stain.

view, bacteria were picked using different procedures. The effectiveness of image processing was assessed by comparison with original images. Generally, brightfield images were smoothed, converted to binary and despeckled to remove noise. To remove large background features, bacteria were identified using the 'find edges' function, or a background subtraction (rolling ball radius of 25 pixels, pixel size $0.32 \mu\text{m}$ per pixel) was applied. For SYTOX™ images, a threshold was applied (either by the Otsu or Default method) and the image despeckled. When the density of bacteria was high, a watershed algorithm was used to identify individual cells; and when there were no bacteria in the cropped image, it was not processed. The number of cells was counted as the number of particles with an area between 2 and 300 pixels, corresponding to approximately 0.6 to $100 \mu\text{m}^2$. The field of view was $360 \times 240 \mu\text{m}^2$. The number of cells counted was plotted using Origin (OriginLab, MA, USA) and statistics used are from paired two-sided Student's *t*-tests performed using MATLAB (MathWorks).

Peptides and proteins

After immobilising bacteria, sample surfaces were blocked by incubation with 20 mM HEPES, 120 mM NaCl, 2.5 mM MgCl_2 ,

0.1% BSA (HEPES/BSA) for 30 minutes at room temperature, the samples were then washed with 1 ml HEPES buffer three times. An antimicrobial peptide cecropin B was added to bacteria to a final concentration of $5 \mu\text{M}$.²⁶ To image the membrane attack complex on bacteria, components of the MAC were added sequentially as described elsewhere.⁴ Briefly, a 10% solution of C5 deficient serum (CompTech, Texas USA) in HEPES/BSA was added to bacteria and incubated for 20 minutes at 37°C , the sample was then washed to remove serum. $0.1 \mu\text{g mL}^{-1}$ of each MAC component in HEPES/BSA were then added in two stages: C5, C6 and C7 (provided by the Rooijackers lab, University Medical Centre Utrecht) were added, incubated for 5 minutes and washed; then C8 (CompTech, Texas USA) and C9 (provided by the Rooijackers lab, University Medical Centre Utrecht) were added for 20 minutes and washed. The samples were imaged by AFM in tapping mode as described below.

Atomic force microscopy

AFM was performed in intermittent-contact mode on a Nanowizard III AFM with an UltraSpeed head (JPK, Germany; now Bruker AXS, CA, USA) using a FastScanD (Bruker AXS, CA, USA) cantilever with 0.25 N m^{-1} spring constant and 120 kHz



resonance frequency. Images were acquired with a drive frequency of 90–110 kHz and an amplitude of 9–15 nm, representing an approximately 30–40% drop from the free amplitude 5–10 μm above the sample surface. All AFM was performed in liquid in HEPES buffer and was performed within 3 hours of immobilising. Images are 512×512 pixels (unless otherwise specified) with an aspect ratio of 1:1. $5 \times 5 \mu\text{m}^2$ scans were performed at a line frequency of 1 Hz, $500 \times 500 \text{ nm}^2$ and $350 \times 350 \text{ nm}^2$ scans were performed at 3–5 Hz. Data was analysed in Gwyddion 2.52 (<http://gwyddion.net/>).²⁷ $5 \times 5 \mu\text{m}^2$ scans were processed by applying a first-order plane fit. A first-order plane fit, followed by line-by-line 2nd order flattening and a Gaussian filter with $\sigma = 1$ pixel, to remove high-frequency noise, was applied to $500 \times 500 \text{ nm}^2$ and $350 \times 350 \text{ nm}^2$ scans.

Results and discussion

In this study, we have looked at two strains of *E. coli* (BL21 and MG1655) in four different buffers (milliQ water, PB, PBS and HEPES), for four different functionalisation techniques (Gelatin, PLL, Cell-TakTM and Vectabond[®]). The first stage of coverslip preparation was an extensive cleaning process that is essential in achieving high immobilisation efficiency. *E. coli* BL21 and MG1655 were used because they are common model strains for single cell studies.^{3,4,8,13,22,28,29} They also differ in their outer membrane structures; while MG1655 has a higher abundance of flagella and the presence of the polysaccharide region of the lipopolysaccharide (LPS), BL21 has fewer flagellar and no LPS.^{30,31}

The efficiency of bacteria adhesion on selected coatings was quantified by counting the total number of bacteria per unit area ($360 \times 240 \mu\text{m}^2$) using brightfield microscopy. Cell viability was verified by the fluorescence of the nucleic-acid dye SYTOXTM, where fluorescence is a signature of permeability of the cell envelope and bacterial death.

The efficiency of bacterial adhesion onto glass was highly variable. This variability was observed between different strains of *E. coli*, between different surfaces (Fig. 2 demonstrates the degree of variation between surface types in HEPES) and between different buffers (Fig. 3 demonstrates the degree of variation between buffers on Vectabond[®]). These variations are quantified for all conditions in Fig. 4a and differences discussed further below.

We found that MG1655 *E. coli* are more difficult to immobilise than BL21. In Fig. 4a, we see that the number of MG1655 bacteria adhered was significantly greater than that of BL21 in only one condition ($p < 0.05$). This is unsurprising since differences in adhesion between different strains of the same species have been reported previously.³² In this case, the difference is possibly due to the fact that BL21 lack the LPS,³⁰ or due to a higher abundance of flagellar on MG1655, which increases the motility of this strain.³¹

The buffer composition also affects the immobilisation of bacteria. Fig. 4a shows that, compared to milliQ water, bacteria are less likely to adhere well in low salt buffer (PB) and are even less adherent in high salt buffers (PBS and HEPES). The exception to this is BL21 *E. coli* on PLL, where the adhesion is lower in PB than PBS or HEPES ($p < 0.05$). In milliQ, adhesion is high for both strains on all surfaces (>100 bacteria per image $360 \times 240 \mu\text{m}^2$), except MG1655 on PLL which leads to ~ 30 bacteria per image.

Different immobilisation techniques also yield different levels of adhesion and are affected by buffer composition to different degrees (Fig. 4a). Gelatin and PLL are the most common methods used for immobilisation of bacteria.^{17,32} These are cationic protein coatings that promote the attachment of anionic bacteria *via* electrostatic interactions. The effectiveness of these coatings was found to be highly dependent on buffer conditions and *E. coli* strain. For gelatin, no bacteria were adhered to coverslips unless bacteria were immobilised in milliQ or PB, when adhesion is high. This may

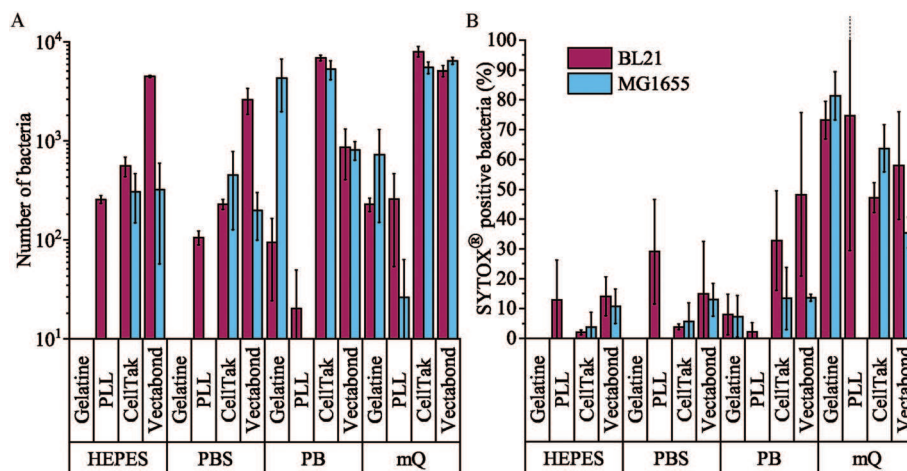


Fig. 4 (A) The mean number of all bacteria (live and dead) in a $360 \times 240 \mu\text{m}^2$ field of view for each condition tested. Note the logarithmic scale on the vertical axis. (B) The mean percentage death of bacteria in a field of view for each condition tested, dead bacteria were identified as SYTOX[®] positive cells. Error bars are standard deviations of the mean ($n = 3$).



be due to the masking of electrostatic interactions by monovalent ions.¹⁷ Furthermore, the preparation of gelatin coated coverslips is time consuming, since air drying of coverslips takes hours and may complicate the planning and design of AFM experiments, in particular those that require prolonged scanning. For these reasons, we do not recommend the use of gelatin to adhere bacteria.

In contrast, PLL requires the shortest preparation time and is a relatively cost-effective option. In the case of MG1655 on PLL, adhesion was poor in all conditions including milliQ possibly due to the flagella³³ and polysaccharides on the surfaces of these cells.³⁰ However, adhesion of BL21 onto PLL was good (>100 bacteria per image) in high salt buffers and milliQ, but poor in PB. This is contrary to the poor adhesion of bacteria in phosphate buffers on gelatin and may be because PLL has larger net positive charge than gelatin.³²

The third immobilisation technique used was Cell-Tak™. Cell-Tak™ is an acidic solution of polyphenolic proteins purified from marine mussels. When neutralised with sodium bicarbonate, the proteins absorb onto a surface, coating a glass coverslip for bacteria to adhere to.³⁴ Brightfield images demonstrated good adhesion of both strains of bacteria in all conditions (Fig. 4a), supporting previous work showing good adhesion for a range of bacteria, even in nutrient broth.¹⁷

Finally, Vectabond® is a solution predominantly made up of 3-Aminopropyltriethoxysilane (APTES)³⁵ which coats coverslips with amine groups and is believed to adhere bacteria *via* electrostatic and hydrophobic interactions.^{17,36} This is similar to gelatin and PLL coatings. However, adhesion of bacteria

onto Vectabond®-coated coverslips gave high numbers of adhered cells in all conditions, in particular, the coating supported high levels of MG1655 adhesion in buffers.

Fig. 4b shows the percentage of dead bacteria in each image. As with adhesion, cell death depends on the bacterial strain: the proportion of dead BL21 was slightly higher in all but 3 of the conditions tested, compared to the survival of MG1655 in the same conditions. Buffer composition also affects cell survival: immobilisation in milliQ consistently led to a high percentage of dead cells (35–82% dead). BL21 bacteria in HEPES and PBS survived better than cells in PB when immobilised on Cell-Tak™ and Vectabond® ($p < 0.2$). The same pattern was seen for MG1655 although not to the same degree. On PLL survival was approximately equal in PB, PBS and HEPES. For gelatin and PLL, when bacteria were adhered, the percentage cell death was low in all buffers except milliQ.

Next, we carried out AFM on bacteria immobilised in HEPES (Fig. 5), HEPES was used because survival was good for BL21 and MG1655 on all surfaces (Fig. 4b). Intermittent-contact mode AFM was used because lateral forces are lower than in contact mode.³⁷ We expect that other gentle AFM modes, for example non-resonance dynamic modes (*e.g.*, PeakForce Tapping® or Quantitative Imaging™ modes) could also be used to image bacteria under these conditions. Such modes may also be used to acquire nanomechanical maps of the bacteria.³⁸

When using AFM, BL21 on PLL were well adhered, bacteria were smooth and resolution was high enough to see the porin lattice (with ~7 nm periodicity in the outer membrane⁴) cover-

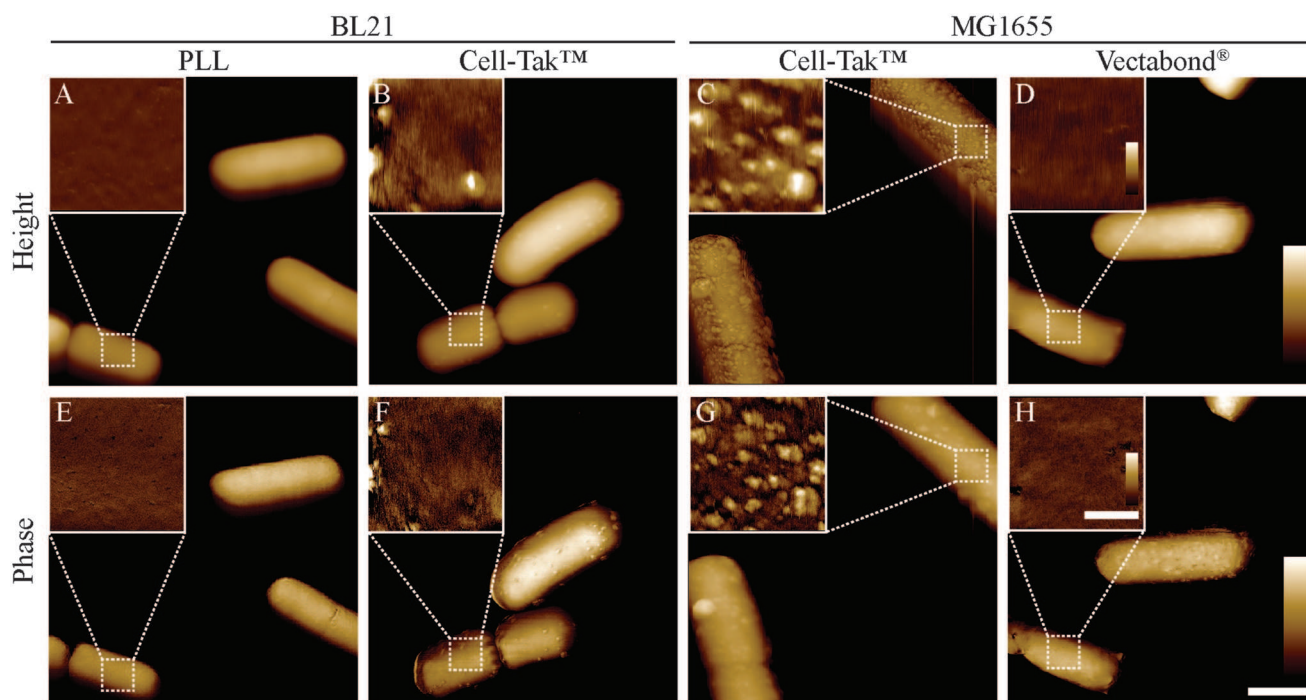


Fig. 5 Tapping mode atomic force microscopy height and phase images of *E. coli* bacteria immobilised onto glass coverslips. Larger images show whole bacteria, insets show smaller scans of the bacterial surface. The locations of the smaller scans are indicated by white, dashed squares in the larger-scale images. Lateral scale bar (A–H) 1 μ m, insets 250 nm. Vertical colour scales (A–D) 600 nm, inset 30 nm; (E–F) 10°, inset 2°.



ing the surface. When imaging bacteria adhered with Cell-Tak™, unidentified aggregates approximately 10–20 nm high and 50–100 nm wide were observed on both BL21 and MG1655, making the samples unusable for high resolution studies. We note that Cell-Tak™ has been used in previous studies¹⁷ and in our own published⁴ and unpublished research, without this problem of aggregates. Hence, it cannot be ruled out as a viable immobilisation strategy – here we just report the risk of aggregation issues. This problem also highlights the importance of AFM based experiments, since cells appear unchanged when looking at brightfield images and there is no increase in cell death. Finally, MG1655 bacteria on Vectabond® coated coverslips were well adhered and usable for high resolution imaging.

To demonstrate the performance of AFM on the adhered bacteria, Fig. 6 shows $350 \times 350 \text{ nm}^2$ scans of the surface of *E. coli* bacteria. Fig. 6A shows a pattern of $\sim 10 \text{ nm}$ wide pits at the surface of MG1655 *E. coli*, similar to previous observations.^{4,12} The dimensions of this pattern are consistent with those observed for porins on isolated outer membranes.³⁹ This indicates we resolve the outer membrane porin lattice on live *E. coli*. Fig. 6B shows the degradation of the *E. coli* surface due to an antimicrobial peptide that is known to target both Gram-positive and Gram-negative bacteria, cecropin B (CecB).²⁶ Finally, Fig. 6C shows pores that have been assembled following exposure of *E. coli* to the immune proteins that form bactericidal membrane attack complexes (MACs). The size and shape of these rings is consistent with cryoEM and AFM data of the whole MAC pore inserted into lipid bilayers.^{40,41}

Since the immobilisation of living cells and organisms is vital for physiological AFM experiments, this is not the first study trying to achieve this efficiently. But similar techniques

are not always reproducible in different studies. Meyer *et al.* investigated several techniques to immobilise a variety of bacteria. They primarily recommend using Cell-Tak™ for immobilisation, achieving excellent adhesion of Gram-positive and -negative cells for several hours, even in nutrient broth.¹⁷ However, they did find lower adhesion of long rod shaped bacteria¹⁷ and we have found it less reliable and more prone to contamination (Fig. 5).

Meyer *et al.* also investigated covalently attaching cells to a substrate and achieved excellent adhesion, however, they point out that chemically modifying bacterial surfaces may affect validity of subsequent experiments.¹⁷ They also try physical entrapment of cells in microwells but find capture inefficient.¹⁷ This is contrary to a study by Kailas *et al.* which uses star-shaped wells to trap *Staphylococcus aureus* with very high efficiency. The lack of chemical interactions required for immobilisation meant that experiments could be performed in complex growth media to track cell division.¹⁵

One of the most popular methods for immobilisation, gelatin, has the most reproducible pattern of adhesion: our study, Meyer *et al.*, Lonergan *et al.* and Allison *et al.* all find good adhesion in water or low salt buffers for a range of bacteria.^{17,24,32} But, cell viability assays consistently found bacteria in these conditions had a high level of staining by dyes for cell death³² and adhesion could not be maintained in high salt buffers.^{17,32}

As with gelatin, PLL and APTES coated glass adheres negatively charged bacteria *via* physisorption to the positively charged surface. We found that the APTES containing solution of Vectabond® adheres bacteria efficiently in high salt buffers, this is contrary to Meyer *et al.*; they found adhesion to APTES coated glass could only occur in deionised water.¹⁷ Immobilisation of *E. coli* to PLL coated glass was extensively

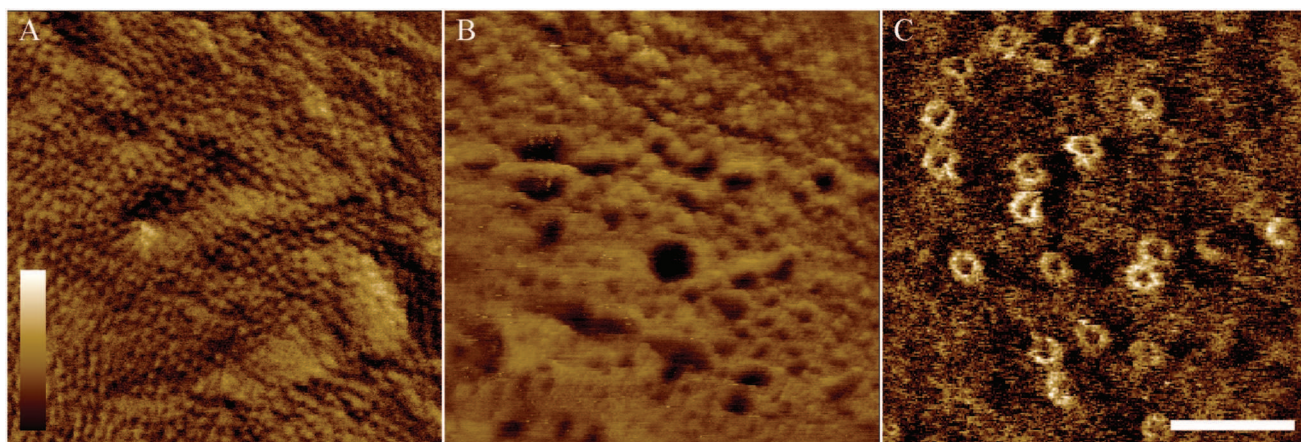


Fig. 6 Tapping mode atomic force microscopy phase images of MG1655 (A) and BL21 (B–C) *E. coli* bacteria immobilised onto glass coverslips. (A) When bacteria, on Vectabond® coated coverslips in HEPES buffer, are imaged at high resolution, a network of porins can be seen in the outer membrane. (B) AFM can be used to investigate the mechanism of action of antimicrobial peptides. As an example, $5 \mu\text{M}$ Cecropin B was applied to bacteria immobilised onto Vectabond® coated coverslips in HEPES buffer, resulting in nanometre-scale poration of the outer membrane. (C) Using cells immobilised on PLL in HEPES buffer, the formation of the membrane attack complex (MAC) can be investigated on live bacteria. The MAC pores can be observed as rings in the membrane. (A–C) Lateral scale bar is 100 nm. Vertical colour scale is (A) 2° (B) 4° and (C) 3° . (A–B) are 512×512 pixels, (C) is 256×256 pixels.



studied by Lonergan *et al.* They found that bacteria immobilised in minimal media were unsuitable for AFM imaging as cells detached. However, they found that immobilisation in dilute PBS supplemented with glucose and divalent cations led to efficient coverage of bacteria, cells could then be washed into nutrient media and maintain their adhesion. With this method they were able to track cell division by AFM.

Our study adds to this body of existing literature and provides some rationale for reported differences in measured adsorption using various immobilisation protocols, given the here observed differences in adhesion and cell viability as a function of buffer composition and bacterial strain. At the same time, we provide guidance for the preparation of bacteria for high-resolution AFM imaging of the bacterial cell envelope.

Conclusions

The development of a robust immobilisation technique is an essential part of any AFM experiment. As well as efficiency, important considerations include time, cost and reliability. Another consideration is the impact of the surface functionalisation on the following AFM experiments. We have found that buffers are essential to keep bacteria viable for prolonged time periods. However, they tend to reduce the efficiency of immobilisation. Successful immobilisation methods were Vectabond® for all conditions tested and PLL in some conditions. By contrast, gelatin was the least successful immobilisation technique in all buffered conditions tested. We also highlight the importance of performing AFM on bacteria before deciding on an immobilisation technique, since Cell-Tak™ can appear successful until AFM is performed and bacteria may be coated with an unknown aggregate. Finally, we show some examples of images obtained by AFM that show high-resolution, *in situ* changes to the surface of live bacteria.

Conflicts of interest

There are no conflicts to declare.

Acknowledgements

We thank Edward Parsons and Isabel Bennett for their advice on immobilisation protocols; Kate Hammond (NPL) for Cecropin B; Dani Heesterbeek and Suzan Rooijackers (Utrecht) for providing MAC proteins and advice; and the UK Engineering and Physical Sciences Research Council (EP/N509577/1) and the UK Medical Research Council (MR/R000328/1 and MR/R024871/1) for funding.

Notes and references

- 1 L. Potvin-Trottier, S. Luro and J. Paulsson, *Curr. Opin. Microbiol.*, 2018, **43**, 186–192.
- 2 A. N. Kapanidis, A. Lepore and M. El Karoui, *Biophys. J.*, 2018, **115**, 190–202.
- 3 Ö. Baltekin, A. Boucharin, E. Tano, D. I. Andersson and J. Elf, *Proc. Natl. Acad. Sci. U. S. A.*, 2017, **114**, 9170–9175.
- 4 D. A. Heesterbeek, B. W. Bardoel, E. S. Parsons, I. Bennett, M. Ruyken, D. J. Doorduijn, R. D. Gorham, E. T. Berends, A. L. Pyne, B. W. Hoogenboom and S. H. M. Rooijackers, *EMBO J.*, 2019, **38**, e99852.
- 5 L. Chopinet, C. Formosa, M. P. Rols, R. E. Duval and E. Dague, *Micron*, 2013, **48**, 26–33.
- 6 M. Shibata, H. Watanabe, T. Uchihashi, T. Ando and R. Yasuda, *Biophys. Physicobiol.*, 2017, **14**, 127–135.
- 7 H. Shi, Z. Liu, A. Li, J. Yin, A. G. L. Chong, K. S. W. Tan, Y. Zhang and C. T. Lim, *PLoS One*, 2013, **8**, 1–10.
- 8 R. D. Turner, A. F. Hurd, A. Cadby, J. K. Hobbs and S. J. Foster, *Nat. Commun.*, 2013, **4**, 1496.
- 9 R. Nowakowski, P. Luckham and P. Winlove, *Biochim. Biophys. Acta, Biomembr.*, 2001, **1514**, 170–176.
- 10 T. Ando, N. Kodera, E. Takai, D. Maruyama, K. Saito and A. Toda, *Proc. Natl. Acad. Sci. U. S. A.*, 2001, **98**, 12468–12472.
- 11 R. Mukherjee, M. Saha, A. Routray and C. Chakraborty, *IEEE Trans. Nanobiosci.*, 2015, **14**, 625–633.
- 12 H. Yamashita, A. Taoka, T. Uchihashi, T. Asano, T. Ando and Y. Fukumori, *J. Mol. Biol.*, 2012, **422**, 300–309.
- 13 O. Peric, M. Hannebelle, J. D. Adams and G. E. Fantner, *Nano Res.*, 2017, **1**, 1–13.
- 14 A. Pyne, M.-P. Pfeil, I. Bennett, J. Ravi, P. Iavicoli, B. Lamarre, A. Roethke, S. Ray, H. Jiang, A. Bella, B. Reisinger, D. Yin, B. Little, J. C. Muñoz-García, E. Cerasoli, P. J. Judge, N. Faruqui, L. Calzolari, A. Henrion, G. J. Martyna, C. R. M. Grovenor, J. Crain, B. W. Hoogenboom, A. Watts and M. G. Ryadnov, *Chem. Sci.*, 2017, **8**, 1105–1115.
- 15 L. Kailas, E. C. Ratcliffe, E. J. Hayhurst, M. G. Walker, S. J. Foster and J. K. Hobbs, *Ultramicroscopy*, 2009, **109**, 775–780.
- 16 V. Dupres, F. D. Menozzi, C. Loch, B. H. Clare, N. L. Abbott, S. Cuenot, C. Bompard, D. Raze and Y. F. Dufrêne, *Nat. Methods*, 2005, **2**, 515–520.
- 17 R. Louise Meyer, X. Zhou, L. Tang, A. Arpanaei, P. Kingshott and F. Besenbacher, *Ultramicroscopy*, 2010, **110**, 1349–1357.
- 18 F. Akhatova, G. Fakhruullina, E. Khakimova and R. Fakhruullin, *Ultramicroscopy*, 2018, **194**, 40–47.
- 19 M. Li, D. Dang, N. Xi, Y. Wang and L. Liu, *Nanoscale*, 2017, **9**, 17643–17666.
- 20 Y. L. Lyubchenko, *Nanoscale Imaging: Methods and Protocols – Methods in Molecular Biology*, Humana Press, New York, NY, 2018, vol. 1814.
- 21 J. L. Fox, *Nat. Biotechnol.*, 2013, **31**, 379–382.
- 22 Z. Oestreicher, A. Taoka and Y. Fukumori, *Micron*, 2015, **72**, 8–14.
- 23 A. Li, P. Y. Lee, B. Ho, J. L. Ding and C. T. Lim, *Biochim. Biophys. Acta*, 2007, **1768**, 411–418.
- 24 D. P. Allison, C. J. Sullivan, N. P. Mortensen, S. T. Retterer and M. Doktycz, *J. Visualized Exp.*, 2011, **54**, e2880.



- 25 J. Schindelin, I. Arganda-Carreras, E. Frise, V. Kaynig, M. Longair, T. Pietzsch, S. Preibisch, C. Rueden, S. Saalfeld, B. Schmid, J. Y. Tinevez, D. J. White, V. Hartenstein, K. Eliceiri, P. Tomancak and A. Cardona, *Nat. Methods*, 2012, **9**, 676–682.
- 26 M. P. Pfeil, A. L. B. Pyne, V. Losasso, J. Ravi, B. Lamarre, N. Faruqui, H. Alkassam, K. Hammond, P. J. Judge, M. Winn, G. J. Martyna, J. Crain, A. Watts, B. W. Hoogenboom and M. G. Ryadnov, *Sci. Rep.*, 2018, **8**, 14926.
- 27 D. Nečas and P. Klapetek, *Cent. Eur. J. Phys.*, 2012, **10**, 181–188.
- 28 E. R. Rojas, G. Billings, P. D. Odermatt, G. K. Auer, L. Zhu, A. Miguel, F. Chang, D. B. Weibel, J. A. Theriot and K. C. Huang, *Nature*, 2018, **559**, 617–621.
- 29 Z. Yang, H. Choi and J. C. Weisshaar, *Biophys. J.*, 2018, **114**, 368–379.
- 30 H. Jeong, V. Barbe, C. H. Lee, D. Vallenet, D. S. Yu, S.-H. Choi, A. Couloux, S.-W. Lee, S. H. Yoon, L. Cattolico, C.-G. Hur, H.-S. Park, B. Ségurens, S. C. Kim, T. K. Oh, R. E. Lenski, F. W. Studier, P. Daegelen and J. F. Kim, *J. Mol. Biol.*, 2009, **394**, 644–652.
- 31 F. W. Studier, P. Daegelen, R. E. Lenski, S. Maslov and J. F. Kim, *J. Mol. Biol.*, 2009, **394**, 653–680.
- 32 N. E. Lonergan, L. D. Britt and C. J. Sullivan, *Ultramicroscopy*, 2014, **137**, 30–39.
- 33 J. P. Bearinger, L. C. Dugan, L. Wu, H. Hill, A. T. Christian and J. A. Hubbell, *BioTechniques*, 2009, **46**, 209–216.
- 34 *Bd Cell-Tak™ Cell and Tissue Adhesive*.
- 35 *VECTABOND™ Reagent Safety Data Sheet*.
- 36 S. Sharma and J. C. Conrad, *Langmuir*, 2014, **30**, 11147–11155.
- 37 M. P. Mingeot-Leclercq, M. Deleu, R. Brasseur and Y. F. Dufrêne, *Nat. Protoc.*, 2008, **3**, 1654–1659.
- 38 P. Kékicheff and C. Contal, *Langmuir*, 2019, **35**, 3087–3107.
- 39 S. Jarosławski, K. Duquesne, J. N. Sturgis and S. Scheuring, *Mol. Microbiol.*, 2009, **74**, 1211–1222.
- 40 A. Menny, M. Serna, C. M. Boyd, S. Gardner, A. Praveen Joseph, B. Paul Morgan, M. Topf, N. J. Brooks and D. Bubeck, *Nat. Commun.*, 2018, **9**, 5316.
- 41 E. S. Parsons, G. J. Stanley, A. L. B. Pyne, A. W. Hodel, A. P. Nievergelt, A. Menny, A. R. Yon, A. Rowley, R. P. Richter, G. E. Fantner, D. Bubeck and B. W. Hoogenboom, *Nat. Commun.*, 2019, **10**, 2066.

