



This is a repository copy of *Directionally accelerated detection of an unknown second reactor with antineutrinos for mid-field nonproliferation monitoring*.

White Rose Research Online URL for this paper:  
<http://eprints.whiterose.ac.uk/151535/>

Version: Submitted Version

---

**Article:**

Danielson, DL, Akindele, OA, Askins, M et al. (67 more authors) (Submitted: 2019)  
Directionally accelerated detection of an unknown second reactor with antineutrinos for mid-field nonproliferation monitoring. arXiv. (Submitted)

---

© 2019 The Author(s). For reuse permissions, please contact the Author(s).

**Reuse**

Items deposited in White Rose Research Online are protected by copyright, with all rights reserved unless indicated otherwise. They may be downloaded and/or printed for private study, or other acts as permitted by national copyright laws. The publisher or other rights holders may allow further reproduction and re-use of the full text version. This is indicated by the licence information on the White Rose Research Online record for the item.

**Takedown**

If you consider content in White Rose Research Online to be in breach of UK law, please notify us by emailing [eprints@whiterose.ac.uk](mailto:eprints@whiterose.ac.uk) including the URL of the record and the reason for the withdrawal request.



[eprints@whiterose.ac.uk](mailto:eprints@whiterose.ac.uk)  
<https://eprints.whiterose.ac.uk/>

# Directionally Accelerated Detection of an Unknown Second Reactor with Antineutrinos for Mid-Field Nonproliferation Monitoring

D. L. Danielson,<sup>1,2,3,\*</sup> O. A. Akindele,<sup>1</sup> M. Askins,<sup>4,5,2</sup> M. Bergevin,<sup>1</sup> A. Bernstein,<sup>1</sup> J. Burns,<sup>6</sup> A. Carroll,<sup>7</sup> J. Coleman,<sup>7</sup> R. Collins,<sup>7</sup> C. Connor,<sup>8</sup> D. F. Cowen,<sup>9,10</sup> F. Dalnoki-Veress,<sup>11,12</sup> S. Dazeley,<sup>1</sup> M. V. Diwan,<sup>13</sup> J. Duron,<sup>14</sup> S. T. Dye,<sup>14</sup> J. Eisch,<sup>15</sup> A. Ezeribe,<sup>16</sup> V. Fischer,<sup>2</sup> R. Foster,<sup>16</sup> K. Frankiewicz,<sup>8</sup> C. Grant,<sup>8</sup> J. Gribble,<sup>6</sup> J. He,<sup>2</sup> C. Holligan,<sup>16</sup> G. Holt,<sup>7</sup> W. Huang,<sup>17</sup> I. Jovanovic,<sup>18</sup> L. Kneale,<sup>16</sup> L. Korkeila,<sup>2</sup> V. A. Kudryavtsev,<sup>16</sup> P. Kunkle,<sup>8</sup> R. Lap Keung Mak,<sup>2</sup> J. G. Learned,<sup>14</sup> P. Lewis,<sup>6</sup> V. A. Li,<sup>1</sup> X. Liu,<sup>19</sup> M. Malek,<sup>16</sup> J. Maricic,<sup>14</sup> C. Mauger,<sup>17</sup> N. McCauley,<sup>7</sup> C. Metelko,<sup>7</sup> R. Mills,<sup>7</sup> F. Muheim,<sup>19</sup> A. St. J. Murphy,<sup>19</sup> M. Needham,<sup>19</sup> K. Nishimura,<sup>14</sup> G. D. Orebi Gann,<sup>4,5</sup> S. M. Paling,<sup>20</sup> T. Pershing,<sup>2</sup> L. Pickard,<sup>2</sup> B. Pinheiro,<sup>17</sup> S. Quillin,<sup>6</sup> S. Rogers,<sup>17</sup> A. Scarff,<sup>16</sup> Y. Schnellbach,<sup>7</sup> P. R. Scovell,<sup>20</sup> T. Shaw,<sup>6</sup> V. Shebalin,<sup>14</sup> G. D. Smith,<sup>19</sup> M. B. Smy,<sup>21</sup> N. Spooner,<sup>16</sup> F. Sutanto,<sup>18</sup> R. Svoboda,<sup>2</sup> L. F. Thompson,<sup>16</sup> C. Toth,<sup>20</sup> M. R. Vagins,<sup>21</sup> S. Ventura,<sup>14</sup> M. J. Wetstein,<sup>15</sup> and M. Yeh<sup>13</sup>

(AIT-WATCHMAN Collaboration)

<sup>1</sup>Rare Event Detection Group, Lawrence Livermore National Laboratory, Livermore, California 94550, USA

<sup>2</sup>Department of Physics, University of California at Davis, Davis, California 95616, USA

<sup>3</sup>Theoretical Division, Los Alamos National Laboratory, Los Alamos, New Mexico 87545, USA

<sup>4</sup>University of California at Berkeley, Berkeley, California 94720, USA

<sup>5</sup>Lawrence Berkeley National Laboratory, Berkeley, California 94720, USA

<sup>6</sup>Atomic Weapons Establishment, Aldermaston, Reading RG7 4PR, UK

<sup>7</sup>University of Liverpool, Liverpool L69 3BX, UK

<sup>8</sup>Boston University, Boston, Massachusetts 02215, USA

<sup>9</sup>Department of Physics, Pennsylvania State University, University Park, Pennsylvania 16802, USA

<sup>10</sup>Department of Astronomy and Astrophysics, Pennsylvania State University, University Park, Pennsylvania 16802, USA

<sup>11</sup>Middlebury Institute of International Studies at Monterey, Monterey, California 93940, USA

<sup>12</sup>James Martin Center for Nonproliferation Studies, Monterey, California 93940, USA

<sup>13</sup>Brookhaven National Laboratory, Upton, New York 11973, USA

<sup>14</sup>University of Hawai'i at Mānoa, Honolulu, Hawai'i 96822, USA

<sup>15</sup>Iowa State University, Ames, Iowa 50011, USA

<sup>16</sup>The University of Sheffield, Sheffield S10 2TN, UK

<sup>17</sup>University of Pennsylvania, Philadelphia, Pennsylvania 19104, USA

<sup>18</sup>University of Michigan, Ann Arbor, Michigan 48109, USA

<sup>19</sup>The University of Edinburgh, Edinburgh EH8 9YL, UK

<sup>20</sup>Boulby Underground Laboratory, Loftus, Saltburn-by-the-Sea, Cleveland TS13 4UZ, UK

<sup>21</sup>University of California at Irvine, Irvine, California 92697, USA

(Dated: September 13, 2019)

When monitoring a reactor site for nuclear nonproliferation purposes, the presence of an unknown or hidden nuclear reactor could be obscured by the activities of a known reactor of much greater power nearby. Thus when monitoring reactor activities by the observation of antineutrino emissions, one must discriminate known background reactor fluxes from possible unknown reactor signals under investigation. To quantify this discrimination, we find the confidence to reject the (null) hypothesis of a single proximal reactor, by exploiting directional antineutrino signals in the presence of a second, unknown reactor. In particular, we simulate the inverse beta decay (IBD) response of a detector filled with a 1 kT fiducial mass of Gadolinium-doped liquid scintillator in mineral oil. We base the detector geometry on that of WATCHMAN, an upcoming antineutrino monitoring experiment soon to be deployed at the Boulby mine in the United Kingdom whose design and deployment will be detailed in a forthcoming white paper. From this simulation, we construct an analytical model of the IBD event distribution for the case of one 4 GWt  $\pm$  2% reactor 25 km away from the detector site, and for an additional, unknown, 35 MWt reactor 3 to 5 km away. The effects of natural-background rejection cuts are approximated. Applying the model, we predict  $3\sigma$  confidence to detect the presence of an unknown reactor within five weeks, at standoffs of 3 km or nearer. For more distant unknown reactors, the  $3\sigma$  detection time increases significantly. However, the relative significance of directional sensitivity also increases, providing up to an eight week speedup to detect an unknown reactor at 5 km away. Therefore, directionally sensitive antineutrino monitoring can accelerate the mid-field detection of unknown reactors whose operation might otherwise be masked by more powerful reactors in the vicinity.

## I. INTRODUCTION

In any antineutrino reactor-monitoring scenario, observers contend with low event rates, time constraints on observation, and backgrounds both artificial and natural. In particular, known energy-producing reactors can overwhelm

\* To whom correspondence should be addressed.  
E-mail: daine@uchicago.edu

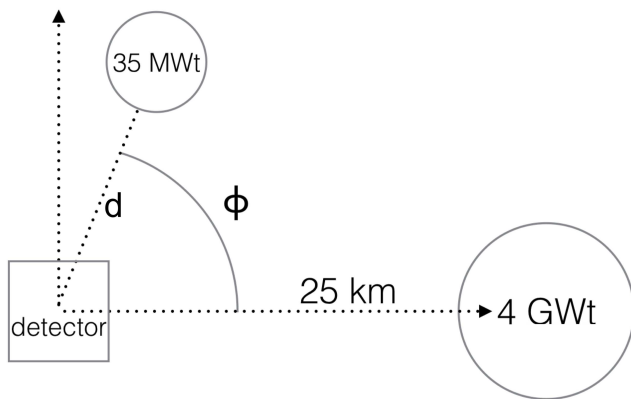


FIG. 1: The mid-field reactor configuration under study, relative to an antineutrino detector at the origin. A known 4 GWt reactor sits 25 km in the  $x$ -direction, with a second, unknown 35 MWt reactor at a standoff  $d$ , with an azimuthal separation  $\phi$ . We investigate the sensitivity of the detector to signify the presence of this second, unknown reactor.

signals of interest that might otherwise be observable to an antineutrino monitor. Thus, a nonproliferation monitoring program must characterize the requirements to detect the presence of a significant unknown reactor even in the vicinity of a known reactor (Figure 1).

The WATCHMAN (Water Cherenkov Monitor for Anti-Neutrinos) collaboration exists to demonstrate the utility of water Cherenkov antineutrino monitoring for nuclear nonproliferation reactor monitoring [1, 2]. As part of this collaboration’s broader interest in demonstrating the utility of antineutrino monitoring for nuclear nonproliferation, we investigate a detector with equivalent geometry to the WATCHMAN detector, but with an alternate fiducial composition.

To incorporate both event-rate and directional sensitivity, we consider a 1 kT-fiducial detector filled with Gadolinium-doped liquid scintillator dissolved in mineral oil. For antineutrinos of energy less than 15 MeV, we exploit the known weak preference for backwards positron emission [3], combined with the neutron’s forward kinematics, to reconstruct a vector from the reconstructed neutron capture vertex to the centroid of positron scintillation. In the case of a single antineutrino source, the expectation direction of this vector points back towards the source reactor.

The purpose of this work is to characterize the sensitivity of such a detector to resolve the presented monitoring scenario using the direction-sensitive hypothesis testing techniques presented below, and to develop a simple analytical method for modeling IBD event spatial distributions in the development of future detectors and applications.

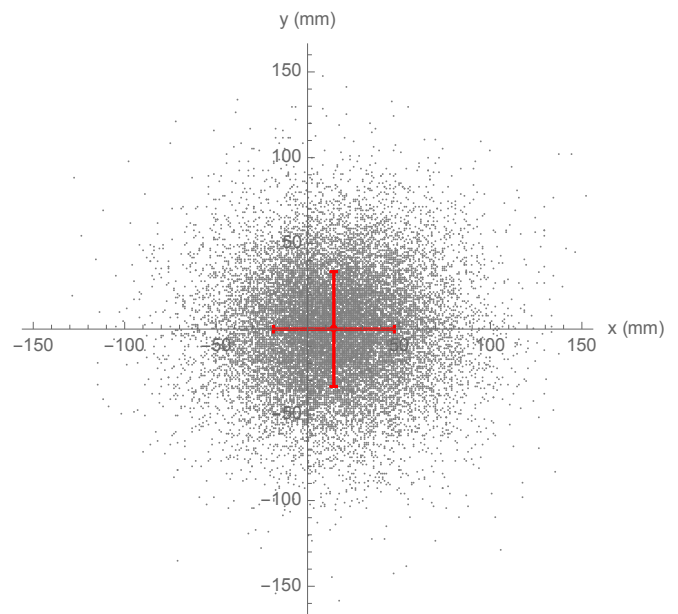


FIG. 2: Relative positron-centroid  $xy$ -positions for 20,000 simulated inverse beta decays from reactor-spectrum [4] antineutrinos. Events take place in a  $16\text{ m} \times 16\text{ m}$  cylindrical volume of mineral oil, doped with 0.100% Gadolinium and 0.177% PPO scintillator dissolved in 19.8% pseudocumene.

We plot the centroid of scintillation for each positron, relative to its coincident neutron capture—defining the origin. Red error bars indicate the population standard deviation, centered on the population mean.

## II. METHODS

### A. Simulation and Modeling

We consider an antineutrino detector sensitive to the positron & neutron-capture double coincidence characteristic of inverse beta decay (IBD). In particular, we model the response of such a detector to multiple fission reactors, at arbitrary positions. Applying this model, we will analyze the expected response of our detector in the presence of two reactors given azimuthal separation  $\phi$ , and each  $i^{\text{th}}$  reactor’s detected integrated flux  $N_i$ .

First we consider the single-reactor case, from which to construct the  $n$ -reactor case by linear superposition. Using Geant4 [5] via rat-pac [6], we simulate the positron tracks and positron centroid vertices resulting from reactor-spectrum [4] antineutrinos interacting in a  $16\text{ m} \times 16\text{ m}$  cylindrical volume of mineral oil, doped with 0.100% Gadolinium by mass and 0.177% PPO scintillator dissolved in 19.8% pseudocumene. Figure 2 shows the resulting  $xy$ -projected positron track midpoints, plotted relative to the respective neutron capture vertices—defining the origin. We model the distribution of these vertices by fitting an uncorrelated tri-gaussian to them, thus obtaining the distribution parameters given in Table I. Hereafter, we call this the “positron centroid distribution.”

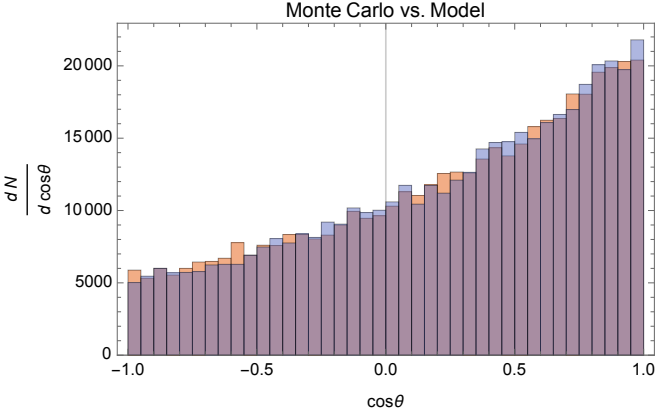


FIG. 3: Cosine density histograms for rat-pac/Geant4 Monte Carlo (blue) and samples drawn from the cosine marginal distribution of our model (orange). The good agreement ( $\chi^2/\text{dof}=1$ ) validates our analytical model (1) against Monte Carlo truth prior to vertex reconstruction uncertainty (3).

TABLE I: Uncorrelated tri-gaussian parameters describing positron midpoint positions relative to neutron captures.

$q$	$\mu_q$ (mm)	$\sigma_q$ (mm)
$x$	$14.4 \pm 0.2$	$33.1 \pm 0.2$
$y$	$0.1 \pm 0.2$	$33.5 \pm 0.2$
$z$	$-0.3 \pm 0.2$	$33.1 \pm 0.2$

By modeling the positron centroid distribution as a single tri-gaussian, we implicitly ‘average’ over some higher-order corrections due to the energy dependance of the neutron thermalization length [3]. Similarly, by drawing neutron energies from a reactor IBD spectrum before neutrino oscillations, we neglect thermalization length modulations arising from those oscillations, these being higher-order corrections at the baselines under consideration ( $\lesssim 0.1\%$  effect on time to  $3\sigma$  detection). Importantly, however, we retain the primary effect of oscillations to modulate the IBD event rate.

Given the parameters in Table I, and noting  $\sigma_x \cong \sigma_y \cong \sigma_z \equiv \sigma$ , we therefore model the single-reactor ( $n=1$ ) positron centroid distribution by,

$$\frac{dN}{d^3r}(\vec{r}|n=1) = \frac{N}{\sqrt{2\pi}\sigma^2} e^{-\frac{(\vec{r}-\vec{\mu})^2}{2\sigma^2}}, \quad (1)$$

where  $N$  is the detected integrated flux and  $d^3r = dx dy dz = r^2 \sin \theta d\theta d\phi dr$ . By extension, the  $n$ -reactor case samples a linear combination of distributions of the same form, given by,

$$\frac{dN}{d^3r}(\vec{r}|n) = \sum_{i=1}^n \frac{N_i}{\sqrt{2\pi}\sigma_i^2} e^{-\frac{(\vec{r}-\vec{\mu}_i)^2}{2\sigma_i^2}}, \quad (2)$$

where  $\vec{\mu}_i$  and  $\sigma_i$  now denote the mean and standard deviation, respectively, of the  $i^{\text{th}}$  reactor’s positron centroid dis-

tribution, along any direction. The isotropic variance of the positron centroid distribution described in Table I suggests the approximately reactor-independent magnitudes  $\sigma_i \approx \sigma_j \equiv \sigma$  and  $\mu_i \approx \mu_j \equiv \mu$ , where  $i$  and  $j$  indicate different reactors.

To model the effect of vertex position reconstruction error, we marginalize  $dN/d^3r$  over an uncorrelated tri-gaussian with  $\sqrt{\sum_i \delta q_i^2} = \delta r \sqrt{2}$  and  $\delta q_i \approx \delta q_j = \delta r \sqrt{2/3}$  where  $\delta r$  denotes the vertex reconstruction resolution, and the factor of  $\sqrt{2}$  arises from the geometric sum of uncorrelated errors on the two reconstructed vertices in an IBD double-coincidence. We neglect the anisotropy of the positron midpoint reconstruction error along its scintillation track, on the grounds that, for the antineutrino energies under consideration, the positron track length is negligibly small relative to the vertex resolution itself [7]. For a reconstructed vertex  $\vec{r}$ ,

$$\begin{aligned} \frac{dN}{d^3\vec{r}}(\vec{r}|n) &= \frac{1}{\sqrt{2\pi}(\delta r \sqrt{2/3})^2} \int_{\sqrt{r}} e^{-\frac{(\vec{r}-\vec{r}')^2}{2(\delta r \sqrt{2/3})^2}} \frac{dN}{d^3r'}(\vec{r}'|n) d^3r' \\ &= \sum_{i=1}^n \frac{N_i e^{-\frac{(\vec{r}-\vec{\mu}_i)^2}{2[\sigma^2 + (\delta r \sqrt{2/3})^2]}}}{\sqrt{2\pi}[\sigma^2 + (\delta r \sqrt{2/3})^2]} \quad (3) \end{aligned}$$

Finally, since we have already shown the positron centroid displacement magnitudes  $\mu_i \approx \mu_j \equiv \mu$  contain negligible reactor discriminating power, we marginalize over the radius  $|\vec{r}|$  and the symmetry angle  $\varphi'$  to concern ourselves only with the reconstructed polar cosine distribution,

$$\frac{dN}{d \cos \tilde{\theta}}(\cos \tilde{\theta}|n) = \int_0^\infty \int_0^{2\pi} \frac{dN}{d^3\vec{r}}(\vec{r}|n) |\vec{r}|^2 d\varphi' d|\vec{r}|, \quad (4)$$

Figure 3 justifies our analytical model by showing good agreement with Monte Carlo truth prior to vertex reconstruction uncertainty.

To scale each reactor’s contribution to  $N$ , neglecting core evolution, we approximate each  $i^{\text{th}}$  reactor’s mean detected IBD count  $\langle N_i \rangle$  after a duration  $t$  as,

$$\langle N_i \rangle(t) \approx \varepsilon n_p \frac{t}{4\pi L_i^2} \frac{p_i}{\epsilon} \int_0^\infty \sigma(E) P_{ee}(L_i/E) \varphi(E) dE, \quad (5)$$

where  $\varepsilon$  is the total IBD detection efficiency,  $n_p$  is the number of free fiducial protons,  $L_i$  is the propagation baseline,  $p_i$  is the reactor’s thermal power,  $\epsilon = 200$  MeV approximates the average fission energy,  $E$  is antineutrino energy,  $\sigma$  models the IBD cross section,  $P_{ee}$  is the electron antineutrino survival probability, and  $\varphi$  models the fractional reactor flux density [4].

We model the IBD cross section as given in reference [8],

$$\begin{aligned} k_1 &= 0.07056 \\ k_2 &= 0.02018 \\ k_3 &= 0.001953 \\ E_e &= E_\nu - (m_n - m_p) \\ \sigma(\bar{\nu}_e p) &\approx 10^{-43} \text{cm}^2 p_e E_e E_\nu^{-k_1 + k_2 \ln E_\nu - k_3 \ln^3 E_\nu} \end{aligned}, \quad (6)$$

where all energies and masses are expressed in MeV. This model is accurate to within 0.5% for reactor antineutrino energies [8], and we include this systematic uncertainty in our analysis and in Table II.

Without loss of generality, we restrict ourselves to the inverted mass hierarchy case. We find a negligible event rate discrepancy of less than 0.4% between the hierarchies. However, for the baselines under consideration, the inverted hierarchy yields up to 5% larger systematic uncertainties, so we choose it as the conservative case.

For given detected integrated fluxes  $N_i$ , we calculate the expected histogram by integrating (4) into bins of width  $\Delta \cos \tilde{\theta}$  as justified by Freedman and Diaconis [9],

$$\Delta \cos \tilde{\theta} = 2 \frac{\text{IQR}}{\sqrt[3]{\sum_i N_i}}, \quad (7)$$

where IQR is the interquartile range of the reconstructed polar cosine distribution. We give this histogram both total flux (correlated) and Poisson (uncorrelated) bin uncertainties.

E. Caden's work on behalf of the Double Chooz collaboration demonstrates that judicious cuts can reduce natural background-induced effects to negligible levels in directionality studies [10]. Hence the effect of natural backgrounds is approximated through their impact on the overall detection efficiency  $\varepsilon$ .

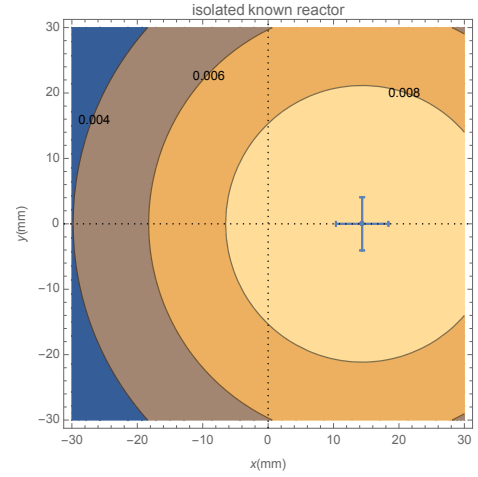
## B. Hypothesis Testing

To characterize the sensitivity of our detector to distinguishing a two-reactor scenario from the one-reactor (null) hypothesis, we consider the one-sided 95% confidence interval (CI) limit on significance to reject the null hypothesis, quantifying significance as the  $Z$ -score of the reduced chi-square test statistic [11],

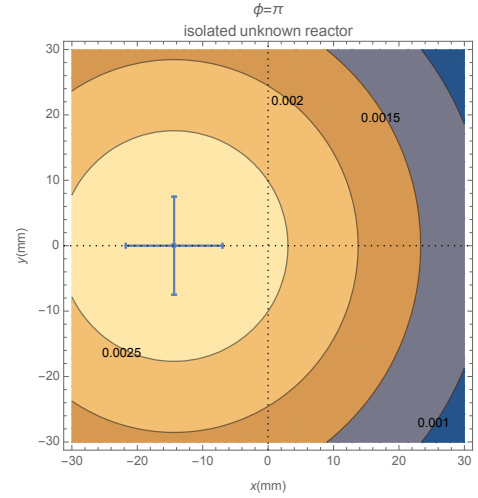
$$Z = \Phi^{-1} \left[ 1 - \int_{\chi^2}^{\infty} f(z; \text{dof}) dz \right], \quad (8)$$

where  $\Phi^{-1}$  is the quantile of the standard Gaussian, and  $f$  is the  $\chi^2$  probability density function. To predict the one-sided confidence interval limit on  $Z$  with a confidence level CL, we use a conservative approximation following [12]. For an upper limit,

$$Z_{\text{CL}} \lesssim Z|_{N_i = \langle N_i \rangle + \delta N_i} \Phi^{-1}(1 - \text{CL}), \quad (9)$$



(a) The null hypothesis: a single reactor signal in the positive  $x$ -direction.



(b) The unknown reactor signal, in isolation, shown for a reactor in the negative  $x$ -direction ( $\phi = \pi$ ).

FIG. 4: IBD positron centroid event count  $xy$ -distributions for (a) the known 4 GWt  $\pm 2\%$  reactor at a 25km standoff, and (b) the unknown 35 MWt reactor in isolation at a 5 km standoff, both after one month of exposure. The origin marks the neutron capture vertex, by definition. Error bars show the standard deviation on the mean of each distribution, centered on the mean. Contours values denote the constant value of the distribution along them. The color scale is reset between (a) and (b) to accommodate their different total event counts, as evidenced by the contour values.

where  $Z_{\text{CL}}$  is the limit, and from the  $i^{\text{th}}$  reactor  $\langle N_i \rangle$  counts the expected IBD detections with a total uncertainty  $\delta N_i$ . For a lower limit, we reverse the inequality and subtract  $\delta N_i$  instead.

TABLE II: Systematic Uncertainties in Expected IBD Event Count

source	systematic uncertainty $(\sigma_s)_i / \langle N \rangle$
thermal power	2%
IBD cross section	0.5% [8]
reactor neutrino anomaly	2%
oscillation parameters	See reference [13]

### 1. Systematic Uncertainties

Systematic uncertainties accumulate from thermal power IBD conversion, cross section uncertainties [8], flavor oscillation uncertainties, and any reactor-anomaly shift. Each of these modulates the expectation number of total IBD events in the single reactor (null) hypothesis (5). We apply the systematic uncertainties shown in Table II:

$$N(t|n=1) = \langle N_1 \rangle(t) \pm \sqrt{\langle N_1 \rangle(t)} \pm \sqrt{\sum_m (\sigma_s)_m^2}, \quad (10)$$

where  $\langle N_1 \rangle(t)$  counts the expected IBD detections due to the known reactor, after a period  $t$ . Since none of these systematics  $(\sigma_s)_m$  exhibit angular dependence, they manifest as bin-to-bin correlated uncertainties when histogramming the null hypothesis. To accommodate bin-to-bin correlated uncertainties, we apply the generalized form of  $\chi^2$  when testing the null hypothesis,

$$\chi^2 \equiv (O_j - E_j)[\sigma_{kj}^2]^{-1}(O_k - E_k), \quad (11)$$

where  $O_j$  is the observed histogram,  $E_j$  is the null hypothesis expectation,  $\sigma_{kj}^2$  is the covariance matrix [14], and  $j, k$  are bin indices under Einstein summation.

Figure 5 presents two-reactor scenarios, showing the superposition of these distributions for a selection of azimuthal separations  $\phi$  and a fixed unknown reactor standoff  $d = 5$  km.

## III. RESULTS

For this scenario we assume a total IBD detection efficiency of  $\varepsilon = 80\%$  after detector losses and background rejection cuts, and a Daya Bay [15] or Double Chooz [16]-like spatial resolution of  $\delta r = 15$  cm. This justifies our previous assertion that the positron reconstruction error is only negligibly anisotropic: the entire positron scintillation track is  $\sim 0.5$  mm for reactor antineutrino energies [7], which is negligible relative to this 15 cm vertex resolution. When calculating the propagation baseline for each standoff, we assume a 500 m detector overburden.

Figure 4 (a) shows the single-reactor positron centroid  $xy$ -distribution after one month of exposure to a 4 GWt fission reactor located 25 km in the positive  $x$ -direction, and (b)

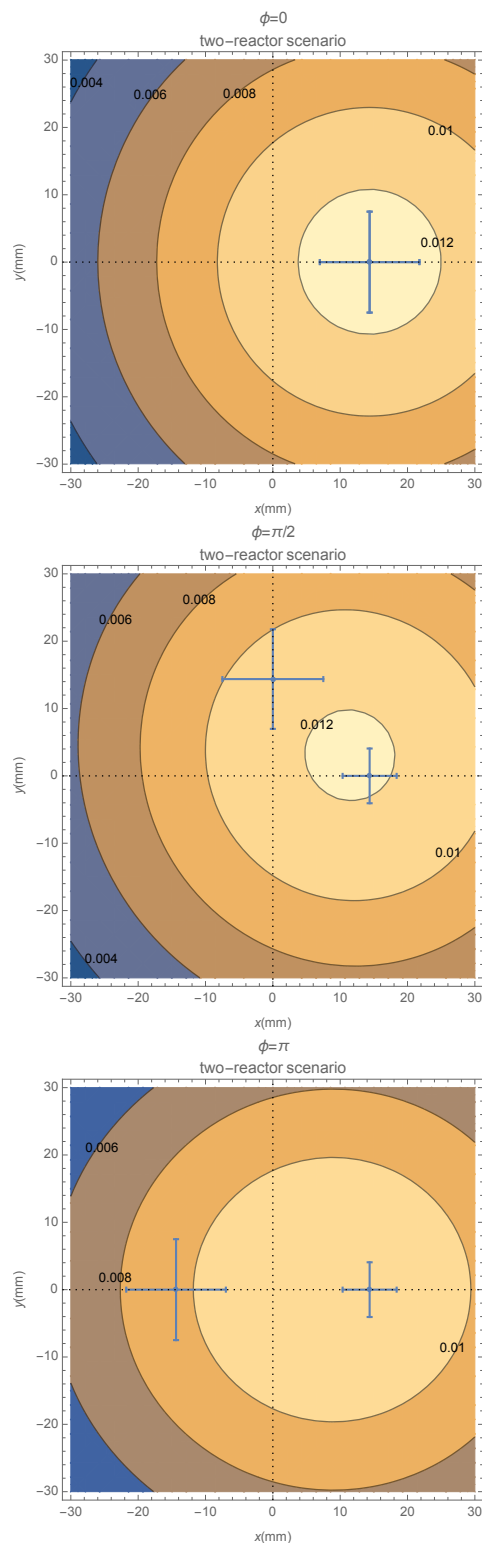


FIG. 5: IBD positron centroid event count  $xy$ -distributions for two-reactor scenarios, varying the azimuthal separation  $\phi \in \{0, \pi/2, \pi\}$  between the known and unknown reactors.

The known, 4 GWt reactor sits at a 25 km standoff, while the unknown 35 MWt reactor sits at a  $d = 5$  km standoff, all after one month of exposure. We define the origin and error bars as in Figure 4.



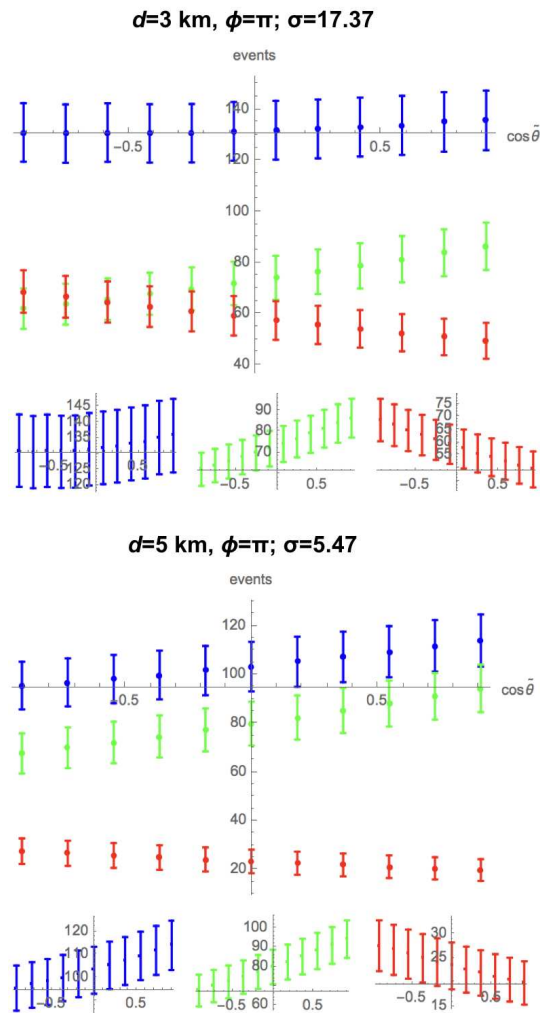


FIG. 6: Predicted reconstructed cosine histograms after one year monitoring two reactors with an azimuthal separation  $\phi = \pi$ , for unknown-reactor standoffs  $d = 3$  km (top) and  $d = 5$  km (bottom). Larger  $\sigma$  values indicate a stronger significance to detect the unknown reactor (reject the null hypothesis).

We test the two-reactor total signal (blue, left insets for detail) against the single reactor (null) hypothesis (green, center insets for detail). For completeness, we also plot the unknown-reactor signal component (red, right insets for detail). We plot only statistical uncertainties, whereas  $\sigma$  accounts for both systematic and statistical uncertainties.

See Appendix A for a range of azimuthal separations  $\phi \in \{0, \pi/4, \pi/2, 3\pi/4\}$ .

shows the same for exposure to a 35 MWt fission reactor located 5 km in the negative  $x$ -direction. Given the high-power reactor's presence is known, Figure 4 (a) depicts the null hypothesis for detection of the additional low-power reactor's presence.

Figure 6 presents expected two-reactor and one-reactor reconstructed cosine histograms after one year of monitoring,

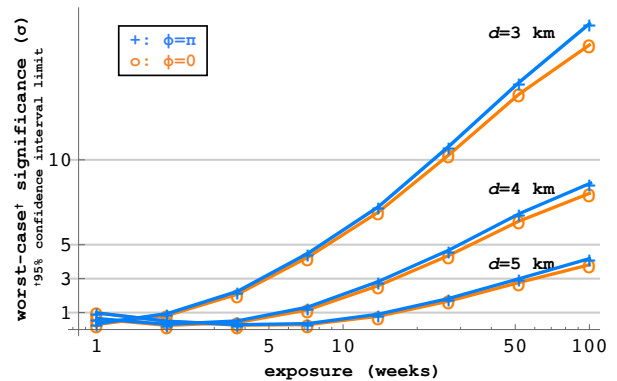


FIG. 7: Rejection of the single-reactor (null) hypothesis over time in the presence of an unknown 35 MWt reactor at  $d \in \{3, 4, 5\}$  km for  $\phi \in \{0, \pi\}$ , given a known 4 GWt reactor at 25 km. We plot the lower limit of the 95% confidence interval, as integrated downward from  $\sigma = +\infty$ , thus giving a worst-case statistical bound.

for the maximum azimuthal separation ( $\phi = \pi$ ), at unknown reactor standoffs of  $d = 3$  km and  $d = 5$  km.

#### IV. DISCUSSION

For the detector under consideration, the time to achieve  $3\sigma$  detection of the unknown reactor depends more strongly on the detector-reactor standoff than it does on directional discrimination. Figure 7 shows that for a reactor-detector standoff of 3 km,  $3\sigma$  detection is likely (95% CL) within 5 weeks. However, the time required extends through 15 weeks ( $\phi = \pi$ ) to 16 weeks ( $\phi = 0$ ) for 4 km, and 52 weeks ( $\phi = \pi$ ) to 60 weeks ( $\phi = 0$ ) for 5 km. When compared to this strong standoff dependence, directional discrimination plays a negligible role at 3 km, increasing towards an 8 week speedup at 5 km. We must note, however, that a detector design more optimized for direction reconstruction could provide a greater improvement in significance for  $\phi > 0$ .

Finally, Figure 8 shows the failure to reject the null hypothesis in the absence of a second reactor. In this case, in which the null hypothesis is in fact true, the confidence interval limit begins at  $\sim 1\sigma$  and decreases monotonically. This demonstrates that our method carries no bias towards false-positive detection.

#### V. OUTLOOK

##### A. Techniques

We have simulated a WATCHMAN-based detector geometry containing Gadolinium-doped liquid scintillator, and characterized its spatial IBD response to an isotropic antineutrino source. From this we have derived a statistical model describing the true detector event positions, their reconstructed vertices, and the reconstructed directionality. This

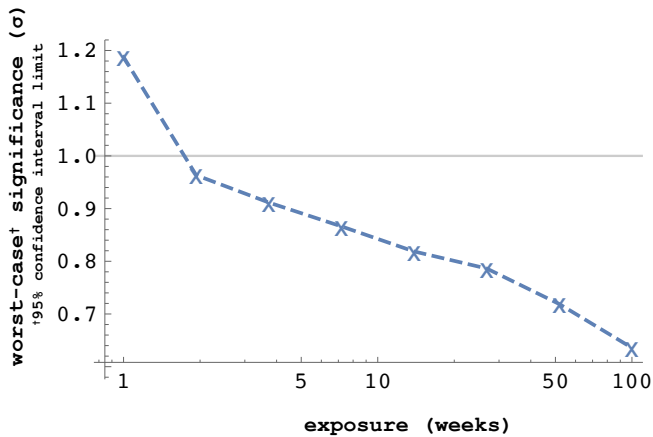


FIG. 8: Demonstration that our method carries no bias towards detection, by its failure to reject the null hypothesis over time in the absence of a second reactor, for a single known 4 GWt reactor at 25 km. We plot the upper limit of the 95% confidence interval from  $-\infty$ .

statistical analysis accepts, as input parameters: the number and positions of source reactors, the true-position distributions, the achievable vertex resolution, the overall detector efficiency, and arbitrary additional correlated and uncorrelated uncertainties. We have developed a parallel-computing Mathematica [17] code to ease the efficient production of further analyses based on this statistical model.

In future, we see natural applications for this model in running similar analyses on various reactor-detector configurations.

## B. Nonproliferation

We have characterized the sensitivity of a 1 kT fiducial volume of GdLS mineral oil to detect the presence of a second, unknown reactor, for a range of configurations on the ground. We have shown evidence for feasible month-scale rapid detection of an unknown, second reactor in the presence of a more powerful, known reactor, provided sufficient proximity ( $d \leq 3$  km) to the unknown source. For more distant standoffs, the time to detect increases significantly. We have also shown that, for our detector design, the directional sensitivity inherent to our chosen fiducial material contributes only marginally in discovering an unknown reactor azimuthally separated from a known one at 3 km, but that increasing the unknown standoff through 5 km increases the relative contribution of directional sensitivity, providing up to a 24% speedup for  $\phi = \pi$  relative to  $\phi = 0$  (Figure 7).

Looking beyond this work, it is reasonable to expect that more directionally-optimized detector configurations may achieve the order-of-magnitude reduction in detection time required to enable month-scale monitoring for the presence of unknown reactors at farther mid-field standoffs. Future studies by the WATCHMAN collaboration will explore multi-detector and segmented-detector deployments to character-

ize their effectiveness at this task.

## ACKNOWLEDGMENTS

D.L.D. thanks the Rare Event Detection Group at Lawrence Livermore National Laboratory for their patience while he builds his company. He also acknowledges his support as a Nuclear Science and Security Consortium Fellow.

We also thank the U.K.'s National Nuclear Laboratory for support of Robert Mills.

This material is based upon work supported by the U.S. Department of Energy National Nuclear Security Administration under Award Number de-na0000979 through the Nuclear Science and Security Consortium. This work was performed under the auspices of the U.S. Department of Energy by Lawrence Livermore National Laboratory under Contract DE-AC52-07NA27344.



## Appendix A:

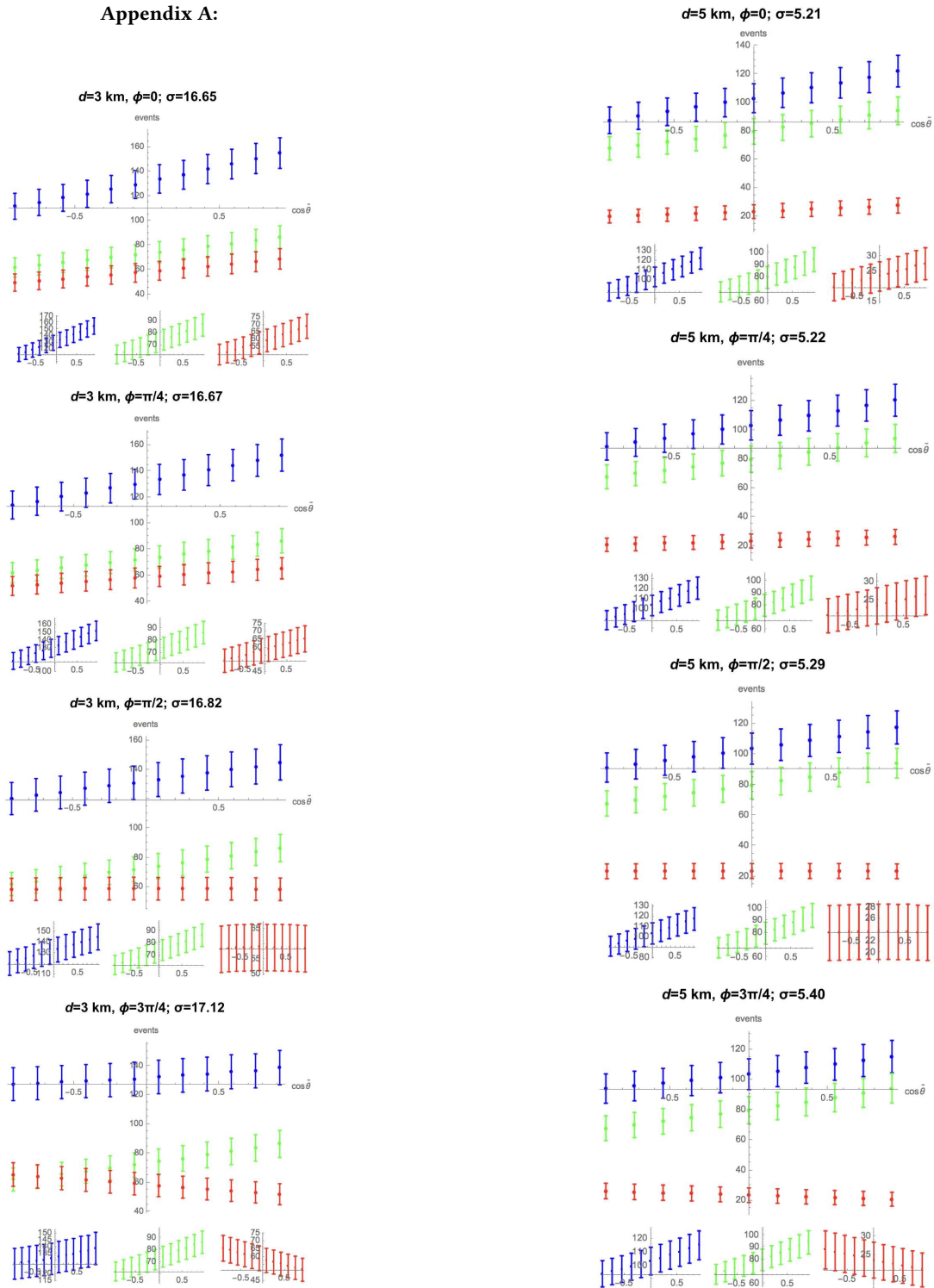


FIG. 9: Predicted reconstructed cosine histograms after one year monitoring two reactors for a range of azimuthal separations  $\phi \in \{0, \pi/4, \pi/2, 3\pi/4\}$ , for an unknown-reactor standoff of  $d = 3$  km. Larger  $\sigma$  values indicate a stronger significance to detect the unknown reactor (reject the null hypothesis). We plot by to the same method as described in Figure 6, which shows the comparable result for  $\phi = \pi$ .

FIG. 10: Predicted reconstructed cosine histograms after one year monitoring two reactors for a range of azimuthal separations  $\phi \in \{0, \pi/4, \pi/2, 3\pi/4\}$ , for an unknown-reactor standoff of  $d = 5$  km. Larger  $\sigma$  values indicate a stronger significance to detect the unknown reactor (reject the null hypothesis). We plot by to the same method as described in Figure 6, which shows the comparable result for  $\phi = \pi$ .

- 
- [1] S. Wampler, “Lawrence livermore to lead united states-united kingdom consortium for demonstrating remote monitoring of nuclear reactors,” <https://www.llnl.gov/news/lawrence-livermore-lead-united-states-united-kingdom-consortium-demonstrating-remote-monitoring> (2018).
- [2] “Uk-us research team to work on project to develop fundamental particle physics technologies for remote monitoring of nuclear reactors,” <https://stfc.ukri.org/news/uk-us-research-team-to-develop-fundamental-particle-physics-technologies/> (2018).
- [3] P. Vogel and J. F. Beacom, “Angular distribution of neutron inverse beta decay,  $\bar{\nu}_e + p \rightarrow e^+ + n$ ,” *Phys. Rev. D* **60**, 053003 (1999).
- [4] C. Bemporad, G. Gratta, and P. Vogel, “Reactor-based neutrino oscillation experiments,” *Rev. Mod. Phys.* **74**, 297 (2002).
- [5] S. Agostinelli, J. Allison, K. Amako, J. Apostolakis, *et al.*, “Geant4—a simulation toolkit,” *Nuclear Instruments and Methods in Physics Research Section A: Accelerators, Spectrometers, Detectors and Associated Equipment* **506**, 250 (2003).
- [6] S. Seibert *et al.*, *RAT Documentation* (2018).
- [7] M. Apollonio *et al.* (CHOOZ), “Determination of neutrino incoming direction in the CHOOZ experiment and supernova explosion location by scintillator detectors,” *Phys. Rev.* **D61**, 012001 (2000), arXiv:hep-ex/9906011 [hep-ex].
- [8] A. Strumia and F. Vissani, “Precise quasielastic neutrino/nucleon cross-section,” *Physics Letters B* **564**, 42 (2003).
- [9] D. Freedman and P. Diaconis, “On the histogram as a density estimator:L2 theory,” *Zeitschrift für Wahrscheinlichkeitstheorie und Verwandte Gebiete* **57**, 453 (1981).
- [10] E. P. Caden, *Studying Neutrino Directionality Studying Antineutrino Directionality with the Double Chooz Experiment*, Ph.D. thesis, Drexel University (2013).
- [11] K. Olive *et al.*, “Review of Particle Physics,” *Chinese Physics C* **40**, 527 (2016).
- [12] J. Denker, “Uncertainty as applied to measurements and calculations,” (2011).
- [13] F. Capozzi, E. Lisi, A. Marrone, D. Montanino, and A. Palazzo, “Neutrino masses and mixings: Status of known and unknown 3 parameters,” *Nuclear Physics B* **908**, 218 (2016), neutrino Oscillations: Celebrating the Nobel Prize in Physics 2015.
- [14] G. L. Fogli, E. Lisi, A. Marrone, D. Montanino, and A. Palazzo, “Getting the most from the statistical analysis of solar neutrino oscillations,” *Phys. Rev. D* **66** (2002).
- [15] B. Littlejohn, Ph.D. thesis, University of Wisconsin - Madison (2012).
- [16] H. Gomez, “Neutrino directionality with double chooz: Latest results,” (2015).
- [17] Wolfram Research, Inc., “Mathematica, Version 11.3,”.