



This is a repository copy of *At-risk children with asthma (ARC): a systematic review*.

White Rose Research Online URL for this paper:
<http://eprints.whiterose.ac.uk/132621/>

Version: Published Version

Article:

Buelo, A., McLean, S., Julious, S. et al. (8 more authors) (2018) At-risk children with asthma (ARC): a systematic review. *Thorax*, 73 (9). pp. 813-824. ISSN 0040-6376

<https://doi.org/10.1136/thoraxjnl-2017-210939>

Reuse

This article is distributed under the terms of the Creative Commons Attribution-NonCommercial (CC BY-NC) licence. This licence allows you to remix, tweak, and build upon this work non-commercially, and any new works must also acknowledge the authors and be non-commercial. You don't have to license any derivative works on the same terms. More information and the full terms of the licence here:
<https://creativecommons.org/licenses/>

Takedown

If you consider content in White Rose Research Online to be in breach of UK law, please notify us by emailing eprints@whiterose.ac.uk including the URL of the record and the reason for the withdrawal request.



eprints@whiterose.ac.uk
<https://eprints.whiterose.ac.uk/>



OPEN ACCESS

ORIGINAL ARTICLE

At-risk children with asthma (ARC): a systematic review

Audrey Buelo,¹ Susannah McLean,¹ Steven Julious,² Javier Flores-Kim,¹ Andy Bush,³ John Henderson,⁴ James Y Paton,⁵ Aziz Sheikh,¹ Michael Shields,⁶ Hilary Pinnock,¹ the ARC Group

► Additional material is published online only. To view please visit the journal online (<http://dx.doi.org/10.1136/thoraxjnl-2017-210939>).

¹Asthma UK Centre for Applied Research, Usher Institute of Population Health Sciences and Informatics, The University of Edinburgh, Edinburgh, UK

²Medical Statistics Group, SchARR, University of Sheffield, Sheffield, UK

³Department of Paediatric Respiratory Medicine, Imperial College and Royal Brompton Hospital, London, UK

⁴Department of Population Health Sciences, Bristol Medical School, University of Bristol, Bristol, UK

⁵School of Medicine, College of Medical, Veterinary, and Life Sciences, University of Glasgow, Glasgow, UK

⁶Centre for Experimental Medicine, Queen's University, Belfast, UK

Correspondence to

Dr Hilary Pinnock, Asthma UK Centre for Applied Research, Usher Institute of Population Health Sciences and Informatics, The University of Edinburgh, Edinburgh EH8 9AG, Scotland; hilary.pinnock@ed.ac.uk

Received 22 August 2017

Revised 12 April 2018

Accepted 16 April 2018



Check for updates

To cite: Buelo A, McLean S, Julious S, et al. *Thorax* Epub ahead of print: [please include Day Month Year]. doi:10.1136/thoraxjnl-2017-210939

ABSTRACT

Introduction Asthma attacks are responsible for considerable morbidity and may be fatal. We aimed to identify and weight risk factors for asthma attacks in children (5–12 years) in order to inform and prioritise care.

Methods We systematically searched six databases (May 2016; updated with forward citations January 2017) with no language/date restrictions. Two reviewers independently selected studies for inclusion, assessed study quality and extracted data. Heterogeneity precluded meta-analysis. Weighting was undertaken by an Expert Panel who independently assessed each variable for degree of risk and confidence in the assessment (based on study quality and size, effect sizes, biological plausibility and consistency of results) and then achieved consensus by discussion. Assessments were finally presented, discussed and agreed at a multidisciplinary workshop.

Results From 16 109 records, we included 68 papers (28 cohort; 4 case-control; 36 cross-sectional studies). Previous asthma attacks were associated with greatly increased risk of attack (ORs between 2.0 and 4.1). Persistent symptoms (ORs between 1.4 and 7.8) and poor access to care (ORs between 1.2 and 2.3) were associated with moderately/greatly increased risk. A moderately increased risk was associated with suboptimal drug regimen, comorbid atopic/allergic disease, African-American ethnicity (USA), poverty and vitamin D deficiency. Environmental tobacco smoke exposure, younger age, obesity and low parental education were associated with slightly increased risk.

Discussion Assessment of the clinical and demographic features identified in this review may help clinicians to focus risk reduction management on the high-risk child. Population level factors may be used by health service planners and policymakers to target healthcare initiatives.

Trial registration number CRD42016037464.

INTRODUCTION

Asthma is the most common long-term condition in children, with European prevalence rates among 6–7 year-olds ranging from 5% in Albania to 21% in the UK.¹ Asthma is responsible for substantial morbidity, resulting in 2.8 million school days lost annually in the UK,² many involving time off work for parents/carers.³ In the UK, more than 25 000 children are admitted annually with an asthma attack.⁴ Frequent attacks affect the quality of life

Key messages

What is the key question?

- What are the factors that could enable clinicians and healthcare services to 'spot the child' (5–12 years) with asthma who is at increased risk of a severe asthma attack (requiring systemic steroids or hospital care)?

What is the bottom line?

- The 'at-risk' picture that emerges is of a child with persistent symptoms who has had previous attacks and is on a suboptimal treatment regimen, especially if they have poor access to healthcare services or other risk factors including comorbid atopic/allergic diseases, vitamin D deficiency, living in poverty and being of African-American ethnicity.

Why read on?

- This systematic review identifies risk factors and, based on the consensus view of an Expert Panel, weights the factors to enable parents, clinicians and healthcare services to target evidence-based management on children with asthma at most risk of having a severe attack.

of children and their parents, are associated with accelerated loss of lung function⁵ and may be fatal.

Asthma guidelines recommend that monitoring should include regular assessment both of current symptom control and future risk of an attack.^{6,7} Objective assessment of symptoms may be achieved with questionnaires validated in children (eg, Paediatric Asthma Control Questionnaire⁸; Childhood Asthma Control Test⁹) or morbidity scores (eg, Royal College of Physicians three questions¹⁰) but no evidence-based tools exist for informing assessment of future risk in children.

Guidelines list factors associated with an increased risk of attacks,⁶ including a recent history of severe attacks, poor symptom control, allergic sensitisation, comorbid rhinitis, exposure to environmental tobacco smoke (ETS), high use of reliever medication, poor adherence to controller medication, obesity, eosinophilia, elevated FE_{NO}, psychosocial problems and impaired spirometry. The relative contribution of these factors to increased risk, and how they may be used to stratify

risk is not clear; clarifying this issue has been identified as a research priority.⁷

We were commissioned by Asthma UK to undertake a systematic review to identify factors associated with the risk of attacks in children aged 5–12 years with asthma and, based on the consensus view of a multidisciplinary Expert Panel, to weight their importance and the strength of the underpinning evidence to inform risk stratification.

METHODS

The systematic review is registered with PROSPERO (CRD42016037464); the protocol is published.¹¹ We followed Cochrane methodology¹² and Preferred Reporting Items for Systematic Reviews and Meta-Analyses (PRISMA) reporting standards.¹³

Search strategy

We searched MEDLINE, EMBASE, CINAHL, AMED, PsycINFO and CENTRAL in May 2016: with no language or date restrictions, identified unpublished and in-progress studies from ClinicalTrials.gov and the ISRCTN registry (<https://www.isrctn.com>), undertook forward and backward citation checks. The search strategy was structured to include terms for 'Asthma' and 'Exacerbations/Attacks' and 'Risk factors/Predictors'.¹¹ (Online supplementary table S1 gives detailed search strategies.) We contacted experts in the field for potentially relevant papers and anticipated risk factors to ensure we captured all likely predictors.

Selection of studies

After initial deduplication and sift of obviously irrelevant titles (NT, SM, SMcL, AudB), two reviewers (NT, SM or AudB and SMcL or HP) independently screened titles/abstracts of papers identified. Two reviewers (AudB and SMcL) screened the full text of potentially eligible studies against review criteria. At each stage, disagreements were resolved by team discussion with advice from the study Steering Group (the grant holders and other members of the ARC group).

Inclusion and exclusion criteria

The focus of the review was to identify factors that increased a child's propensity to asthma attacks. Definitions^{6,7,14} and key decisions regarding operationalising the inclusion/exclusion criteria are detailed in [table 1](#). We used the American Thoracic Society/European Respiratory Society Task Force¹⁴ definition of severe asthma attacks: asthma symptoms and/or airway obstruction outside the normal variation for the patient necessitating a short course of oral corticosteroids and/or hospitalisation/emergency department use. The population included were children aged 5–12 years with a doctor diagnosis of asthma. Studies with a wider range of ages (eg, 3–18 years) were included if children aged 5–12 were reported separately or if more than 50% of the children were within this age range.

Quality assessment

We assessed study quality using Newcastle-Ottawa Scale for cohort, case-control and cross-sectional study designs.¹⁵

Table 1 Criteria for the search strategy and rules devised to operationalise inclusion/exclusion criteria

Search strategy	Definition	Rules to operationalise
Population 'Asthma'	Children aged 5–12 years with doctor-diagnosed asthma, across all severities and degrees of control Any setting	We included studies with a wider range of ages if results for children aged 5–12 years were reported separately or if more than 50% of the children were within this age range. We excluded: ▶ Studies in which the diagnosis of asthma was not doctor diagnosed (eg, parent reported). ▶ Epidemiological studies in which the denominator was the general population (eg, asthma admissions from deprived/rural/urban communities) as opposed to a population of children with asthma.
Outcome 'Exacerbations/Attacks'	Severe asthma attacks as defined by the ATS/ERS Task Force ¹⁴ : asthma symptoms and/or objective evidence of obstruction outside the normal variation for the patient necessitating (A) a short course (at least 3 days) of oral corticosteroids, and/or (B) a hospitalisation or emergency department visit requiring systemic corticosteroids	We excluded studies assessing risk factors for: ▶ Attacks defined only by use of rescue bronchodilator medication. ▶ Poor control/severe asthma (eg, as defined in GINA ⁶) unless 'attacks' were listed as a separate outcome. ▶ Failure to recover, relapse, early readmission from an existing attack. ▶ Fatality/intubation/ICU as specific outcomes (though these may be included within the definition of severe asthma).
Risk factors/predictors	Any feature of the child, family or social context, clinical history, examination finding or test routinely available in clinical practice which increased the propensity of the child to have an asthma attack Any routine clinical care (eg, attendance (or not) at routine reviews) and disease-related behaviours (eg, adherence (or not) to preventer medication)	We excluded: ▶ Tests currently only available in the context of research (eg, novel biomarkers, genomics). ▶ Triggers for attacks, for example, respiratory tract infections, exposure to airborne allergens, exercise. We excluded: ▶ Trials of interventions (eg, inhaled steroids, self-management) proven to reduce exacerbations because we anticipated confounding by indication. ▶ Complex/multifaceted interventions (eg, enrolled in a local disease management initiative) because the impact is unlikely to be generalisable.
Study designs	Cohort, case-control studies and cross-sectional studies (but not case studies and case series)	We included controlled trials if they included an analysis that provided an estimate of risk of an attack (eg, cohort or cross-sectional studies from baseline data).

ATS, American Thoracic Society; ERS, European Respiratory Society; GINA, Global Initiative for Asthma; ICU, intensive care unit.

Data extraction

We extracted details of study design, setting, population, methods, risk factors, definition of asthma and attacks, quality assessment, statistical analyses and results relevant to our objectives using a piloted form, modified from the Cochrane Effective Practice and Organisation of Care data collection form.¹⁶ We contacted authors to clarify unclear or missing data.

Quality assessment and data extraction were conducted by AudB or SMcL and one of eight reviewers (JFK, MW, HB, VD, SS, MP, HKZ or ED) trained to undertake independent duplicate quality assessment and data extraction. Disagreements in quality assessment were independently verified and arbitrated by the principal investigator (HP) who also checked the data presented in the tables.

The results for each risk factor were entered onto a table (online supplementary table S2), in order to facilitate weighting. Within each factor, the results were listed from strongest to weakest study design (ie, cohort, case-control, then cross-sectional) and then ranked by study quality (quality assessment score).

Data synthesis: risk factor weighting

We anticipated that clinical and statistical heterogeneity of data would preclude formal meta-analyses. We therefore convened an Expert Panel (selected to provide a range of perspectives from among senior clinical academics of the Asthma UK Centre for Applied Research and the research team) comprising a general practitioner (GP) (HP), three respiratory paediatricians (JYP, JH, MS) and two researchers with a public health background (AudB, JFK), to make weighting decisions by reviewing the ORs and CIs, or other relevant statistics, as presented for each risk factor in online supplementary table S2. The Panel also had access to the full-text papers. The experts initially worked independently, and then met to reach consensus on weighting. In methodology analogous to the grading of recommendations in which both outcomes and quality of evidence are assessed, there were two decisions to be made:

1. What is the risk associated with each factor? Following discussion, thresholds for the risk weighting based on the majority of ORs for each factor were agreed (see table 2). The risk factor weighting ranged from 'no', 'slightly', 'moderately' or 'greatly' increased risk of future attack.
2. How confident is this estimate of risk? The Expert Panel based the confidence assessment on the following criteria: the number of studies, study design (cohort, case-control and cross-sectional), quality of studies included (Newcastle-Ottawa Scale), consistency of the results and the biological

plausibility of the factors' effect on risk of future attacks to determine the confidence with which the estimates were made. Assessments were rated as 'highly', 'moderately', 'slightly' confident or 'inconclusive/insufficient evidence'.

At the consensus meeting, each factor was considered in turn and all available data taken into account when reaching the decision on risk and confidence. Any subsequent discussion was carried out by email.

Data synthesis: overarching risk

Risk factors for which there was sufficient evidence to reach a consensus decision on weighting and confidence in the assessment based on the decisions reached during Expert Panel discussion were illustrated on a bubble plot. The position of the bubble denotes the weighting of the risk factor and the size of the bubble indicates confidence in the estimate.

End-of-project workshop

An end-of-project videoconference (to allow UK-wide participation) workshop was held in January 2017, in which the researchers and the members of the Expert Panel were joined by a multidisciplinary group (n=18: including medical/nursing professionals from primary and secondary care, health service researchers, patient and public involvement (PPI) members) who reviewed and helped interpret the findings. In addition to the weighting table, data on each factor were presented to the workshop as Forest plots (online supplementary table S3) and the bubble plot constructed to visually display the overall results. Each risk factor was discussed, the weighting assessment reviewed and agreed, and the implications considered from the perspective of the different stakeholders.

Patient and public involvement

Two parents of children with asthma (recruited from the Asthma UK Centre for Applied Research PPI Group) were involved throughout the study. In addition, representatives of Asthma UK attended the end-of-project workshop.

Updating prior to publication

In order to update the review prior to publication, we undertook forward citation on all included studies (January 2017). Pursuing references from included studies is an efficient approach to updating systematic reviews as it is unlikely that relevant papers will have been published without citing at least one of the included studies.¹⁷

RESULTS

Search results

The searches yielded 21 963 records. Figure 1 (PRISMA diagram) gives details of the search and selection process. After deduplication and title/abstracts screening, 209 papers remained for full-text review of which 45 were included. Forward and backward citations yielded 23 additional papers; thus, 68 studies were included in the final analysis.

Characteristics of studies

Of the 68 studies, 28 were cohort,^{18–47} 4 were case-control^{48–51} and 36 were cross-sectional studies.^{52–85} Study size varied markedly from 38 participants with severe asthma in a study from the Netherlands²⁰ to 6.7 million participants in a US census-based study.⁷⁷ The studies came from 10 countries: 53 were based in the USA,^{18 19 21–24 27 28 30–46 49 51–54 57–61 63 65 66 68 70 71 73 74 76–78 80–84 86} 5 in the Netherlands,^{20 29 47 48 64} 3 in Puerto Rico,^{50 55 56} 2 in

Table 2 Thresholds for weighting risk factors

	Description	Thresholds and criteria for decision
Risk weighting (OR)	Greatly increased risk	Majority of ORs >2.5
	Moderately increased risk	Majority of ORs 1.5–2.5
	Slightly increased risk	Majority of ORs 1.1–1.5
	No effect	Majority of ORs <1.1
Confidence	Highly confident	Number, design and quality of studies, consistency of results, biological plausibility of factors
	Moderately confident	
	Slightly confident	
Inconclusive	Unable to decide on risk	Inconsistent or insufficient evidence

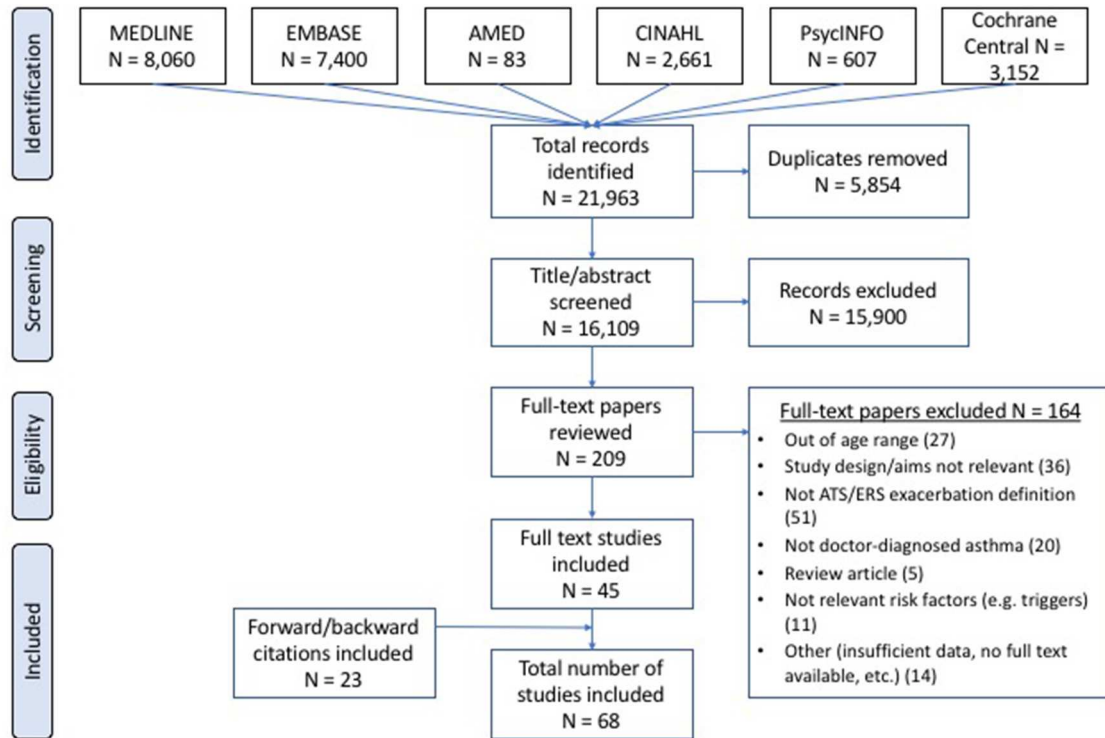


Figure 1 Preferred Reporting Items for Systematic Reviews and Meta-Analyses (PRISMA) flow diagram. ATS, American Thoracic Society; ERS, European Respiratory Society.

Canada,^{26,62} and 1 each in Brazil,⁷⁵ Chile,⁷² Costa Rica,⁶⁹ France,⁶⁷ Trinidad⁷⁹ and the UK.²⁵ Publication dates ranged from 1993⁷⁴ to 2017.¹⁸

The studies were heterogeneous on most characteristics, including population size, recruitment strategy, definitions of risk factors and attacks, and analytical approaches (confirming our decision that meta-analysis was not appropriate). **Figure 2** shows how key variables are illustrated in the Forest plots.

Study quality varied (**figures 3–6**; online supplementary table S2). Most studies adjusted for at least age and gender, though 10 studies did not report adjusting for any potential confounders, reducing their quality score.^{28 45 47 62 67 79 81 83–85}

Overview of results

There were 33 risk factors identified, covering asthma disease status, medication use, allergy/atopy, social context, care and services, environment, and demography. Online supplementary table S2 is the full weighting table containing detailed information about populations studied, definitions used and analyses performed grouped by risk factor. Online supplementary table S3 summarises the data for each risk factor (including Forest plots of ORs where there were sufficient data) and the rationale for the weighting decisions. **Figures 3–6** summarise the two detailed

supplementary tables including simplified Forest plots. The text below synthesises the findings and weighting for each risk factor.

The overarching risk assessment is illustrated in a bubble plot (**figure 7**).

Greatly or moderately/greatly increased risk of attacks (figure 3)

Previous attacks (n=11)

Previous attacks were consistently associated with a greatly increased risk of future attacks (ORs between 2.0 and 4.1).^{25 27 29 35–37 43 44 69 81 84} Due to the consistency of findings and quality of the studies the Panel was highly confident in this assessment (**figure 3**).

Poor control and/or persistent symptoms (n=11)

Ten studies had at least one significant result demonstrating that poor control or persistent symptoms identified a child at moderately/greatly increased risk of future attacks (ORs between 1.4 and 7.8).^{20 27 38 41 49 62 65 69 75 85} The exception was a small (n=165), short duration (3 months) cohort study of moderate quality which showed no association.⁴⁵ The Panel was highly confident in this assessment. Persistent symptoms of any severity

Study design	Size: Number of children	Outcome	Decision rules
◆ Cohort	● <1,000	— Combination outcome	OR <1.1 no effect, 1.1-1.5 slightly increased risk, 1.5-2.5 moderately increased risk, >2.5 greatly increased risk Interpretation based on number, design and quality of studies, consistency of results, biological plausibility.
● Case-control	● 1,001 – 10,000	— Hospitalisation	
■ Cross-sectional	● >10,001	— ED visit	
Quality scores by names of papers		— Oral steroid (OCS) course	
		— Urgent/unscheduled care	

Figure 2 Key variables and key to Forest plots. ED, emergency department.

Risk Factor Assessment	Studies with significant risk factors <i>Study design</i> Citation: ^{ref} Quality score	Studies with mixed or insignificant findings	Forest plots for studies reporting ORs able to be combined	Overall messages (rationale/caveat)
Greatly increased risk				
Previous exacerbations RISK Greatly increased Highly confident.	<i>Cohort studies</i> Thomas 2005: ²⁵ 8/9 Haselkorn 2009b: ²⁷ 8/9 Engelkes 2016: ²⁹ 7/9 Tolomeo 2009: ³⁵ 7/9 Schatz 2003: ³⁶ 6/9 Wu 2011: ³⁷ 6/9 Zeiger 2012: ⁴³ 5/9 Covar 2008: ⁴⁴ 5/9 <i>Cross-sectional</i> Forno 2010: ⁶⁹ 6/10 Quezada 2016: ⁸¹ 6/10 Butz 2000: ⁸⁴ 4/10			Variety of outcome measures (hospitalisation, ED visit, unscheduled care). Consistent findings: all studies show an increase risk. Range of ORs 2.1 to 4.1
Moderately/greatly increased risk				
Poor control and/or persistent symptoms RISK Moderately/ greatly increased Highly confident	<i>Cohort</i> Robroeks 2012: ²⁰ 9/9 Haselkorn 2009b: ²⁷ 8/9 Kwong 2012: ³⁸ 6/9 Haselkorn 2009a: ⁴¹ 6/9 <i>Case-control</i> Lieu 1997: ⁴⁹ 7/9 <i>Cross-sectional</i> Dales 2002: ⁶² 7/10 Stingone 2006a: ⁶⁶ 7/10 Forno 2010: ⁶⁹ 6/10 Lasmar 2007: ⁷⁵ 7/10 Canino 2012: ⁸⁵ 2/10	<i>Cohort</i> Halterman 2001: ⁴⁵ 5/9		Variety of definitions of persistent symptoms. Consistent findings in the higher quality, larger studies. Range of ORs 1.4 to 7.84
Poor access to care (USA) RISK Moderately/ greatly increased; Moderately confident	<i>Cross-sectional</i> Sarpong 1997: ⁶¹ 8/10 Stingone 2006a: ⁶⁶ 7/10 Wood 2002: ⁸² 5/10 Canino 2012: ⁸⁵ 2/10	<i>Cohort</i> Halterman 2001: ⁴⁵ 5/9		US studies Access defined by healthcare/medical insurance arrangements. Increased risk in 4 of 5 studies. OR range 1.24 to 4.41

Figure 3 Greatly increased risk: evidence for risk factors and weighting decisions. Note: The scale on all the Forest plots has been curtailed at an OR of 8 to enable comparison between the plots for the different factors. If the CIs are very wide, and the upper limit extends beyond the plot this is indicated with a line with an arrow. (95% CIs are given in online supplementary table S2 if required.) ED, emergency department.

(as opposed to intermittent symptoms) were associated with greater risk.^{27 38 45 65 69}

Poor access to healthcare (n=5)

Five studies examined access to healthcare defined by insurance status. Four demonstrated that poor access to healthcare was associated with a moderately/greatly increased risk of attacks.^{61 65 82 85} A small cohort study of moderate quality demonstrated no increased risk in children with or without Medicaid (a US social welfare programme).⁴⁵ The Panel was moderately confident in this assessment. The studies were all US based with participants from deprived inner-city populations: one study controlled for ethnicity and poverty.⁶⁵

Moderately increased risk of attacks

Suboptimal drug regimen (n=9)

Five of the seven studies that examined high reliever (short-acting beta₂ agonist (SABA)) use showed a positive association with risk of attacks.^{25 36 43 49 54} The increased risk was judged to be slight (ORs between 1.2 and 1.3 in the three larger studies^{25 36 49}), though none of the studies assessed very high levels of SABA use (figure 4).

Paradoxically, controller medication use was associated with an increased risk of attacks, as clinicians followed guideline recommendations and prescribed inhaled corticosteroids to children with poor control and previous exacerbations ('confounding by indication'). Sixteen studies were included in

this category: nine were suggestive of confounding by indication,^{25 29 48 50 53 55 56 59 81} four demonstrated fewer exacerbations with controller use^{18 35 36 84} and three showed no effect.^{31 65 69}

The most sensitive marker of moderately increased risk was the ratio of controller-to-total medication. Suboptimal regimens were typically defined (in accordance with Healthcare Effectiveness Data and Information Set criteria⁸⁶) as a ratio of the number of prescriptions for controller medication to total number of prescriptions for asthma medication <0.5. Six of seven studies that used this marker showed a significant relationship between a suboptimal regimen and asthma attacks (ORs between 1.2 and 2.3^{18 24 26 31 53 54}). In other approaches, two large, high-quality cohort studies showed an association with use of regular medication and fewer attacks.^{23 29} Thus, the Panel considered that a suboptimal regimen was associated with moderately increased risk, and were highly confident in their assessment.

Comorbid atopic/allergic diseases (n=6)

Two large, high-quality cohort studies analysed primary care records from the UK²⁵ and the Netherlands.²⁹ The UK study found comorbid allergic rhinitis increased the odds of hospitalisation by 2.3 (95% CI 1.4 to 3.9),²⁵ whereas the Netherlands study found no increased risk of attacks in children with comorbid eczema (RR 0.8, 95% CI 0.4 to 1.4), allergic rhinitis (RR 0.8, 95% CI 0.5 to 1.2) or conjunctivitis (RR 1.4, 95% CI 0.7 to 2.7) compared with no comorbid allergic disease.²⁹

Risk Factor Assessment	Studies with significant risk factors <i>Study design</i> Citation: ^{ref} Quality score	Studies with mixed or insignificant findings	Forest plots for studies reporting ORs able to be combined	Overall messages (rationale/caaveat)
Moderately increased risk				
Sub-optimal medication regimen RISK Moderately increased; Highly confident	Cohort Baltus 2017: ¹⁸ 9/9 Spahn 2009: ²³ 8/9 Andrews 2013: ²⁴ 8/9 Zhang 2013: ²⁶ 8/9 Engelkes 2016: ²⁹ 7/9 Farber 2014: ³¹ 7/9 Cross-sectional Rust 2013: ⁵³ 9/10 Vernacchio 2013: ⁵⁴ 9/10	Cohort Schatz 2013: ³⁰ 7/9		Regime defined by ratio of ICS/total therapy. Consistent finding in most studies (OR range 1.2 to 2.3). Other approaches, Spahn (ICS/LABA use in summer), and Engelkes (therapy vs no therapy) showed a positive effect.
Comorbid atopy/allergy RISK Moderately increased, Slightly confident	Cohort Thomas 2005: ²⁵ 8/9 Cross-sectional Arabkhazaeli: ⁶⁴ 7/10 Friedlander 2013: ⁷⁰ 7/10 Lasmar 2007: ⁷⁵ 7/10 Pinto-Pereira: ⁷⁹ 6/10	Cohort Engelkes 2016: ²⁹ 7/9		Most, but not all showed increase risk with co-morbid atopic conditions. No consistent effect of multiple atopic conditions.
African American ethnicity RISK Moderately increased; Highly confident	Cohort Baltus 2017: ¹⁸ 9/9 Stewart 2010: ²² 8/9 Kwong 2012: ³⁸ 6/9 Cross-sectional Quinto 2011: ⁵² 10/10 Rust 2013: ⁵³ 9/10 Sarpong 1997: ⁶¹ 8/10 Stingone 2006a: ⁶⁶ 7/10 Malhotra 2014: ⁷⁸ 6/10 Quezada 2016: ⁸¹ 6/10 Wood 2002: ⁸² 5/10	Cohort Halterman 2001: ⁴⁵ 5/9 Cross-sectional Brehm 2012: ⁵⁶ 9/10		All US studies. Consistent finding in all the more rigorous studies. Effect sometimes varied by outcome (e.g. Quinto showed increase risk for hospitalisation/ED visits, but not oral steroid courses).
Vitamin D deficiency RISK Moderately increased, Slightly confident	Cohort study Brehm 2010: ³² 7/9 Case-control Blatter 2016: ⁵⁰ 7/9 Cross-sectional Brehm 2012: ⁵⁶ 9/10 Searing 2010: ⁸³ 5/10			Deficiency defined as <30ng/ml
Poverty RISK Moderately increased; Moderately confident	Cohort study Schatz 2003: ³⁶ 6/9 Case-control Lieu 1997: ⁴⁹ 7/9 Cross-sectional Rosas-Salazar 2013: ⁵⁵ 9/10 Dales 2002: ⁶² 7/10 Stingone 2006a: ⁶⁶ 7/10 Wood 2002: ⁸² 5/10 Canino 2012: ⁸⁵ 2/10	Case-control Blatter 2016: ⁵⁰ 7/9 Cross-sectional Brehm 2012: ⁵⁶ 9/10		

Figure 4 Moderately increased risk: evidence for risk factors and weighting decisions. Note: The scale on all the Forest plots has been curtailed at an OR of 8 to enable comparison between the plots for the different factors. If the CIs are very wide, and the upper limit extends beyond the plot this is indicated with a line with an arrow. (95% CIs are given in online supplementary table S2 if required.) ED, emergency department; ICS, inhaled corticosteroid; LABA, long-acting β_2 agonist.

The remaining four cross-sectional studies all demonstrated at least one positive association between comorbid atopic/allergic conditions and risk of attacks though CIs were wide.^{64 70 75 79} The Panel concluded that that there was a moderately increased risk of attacks with comorbid atopic/allergic disease, but they were only slightly confident in this assessment.

African-American ethnicity (n=12)

Twelve US-based studies examined the association between African-American ethnicity/‘race’ and the risk of attacks.^{18 22 38 45 52 53 56 61 65 78 81 82} Of the 12 studies, 10 reported at least one significant result demonstrating an increased risk of attacks in African-Americans compared with white or ‘non-black’ children (ORs between 1.6 and 4.1).^{18 22 38 52 53 61 65 78 81 82} The exceptions were a study that assessed the impact of African ancestry in a Puerto Rican population,⁵⁶ and a small cohort study.⁴⁵

Six of these studies demonstrated that the increased risk in African-Americans persisted after controlling for deprivation and/or poverty,^{60 65} area of residence,⁶¹ healthcare provision^{22 38 53 61 65} or parental education.⁵² Two studies compared risk in Black and Hispanic populations^{22 52}: the risk was considerably less in Hispanic populations. Overall, the Panel was highly confident that African-American ethnicity was associated with moderately increased risk of asthma attacks.

Vitamin D deficiency (n=4)

Three small studies showed a significant association between vitamin D insufficiency (vitamin D <30ng/mL) and acute attacks (ORs between 2.2 and 2.8),^{50 56 83} though a larger (n=1024) cohort study found only a borderline effect (OR 1.4, 95% CI 1.0 to 1.9).³² Thus, the Panel was slightly confident that vitamin D deficiency was associated with a moderately increased risk of attacks.

Risk Factor Assessment	Studies with significant risk factors <i>Study design</i> Citation: ^{ref} Quality score	Studies with mixed or insignificant findings	Forest plots for studies reporting ORs able to be combined	Overall messages (rationale/caveat)
Slightly increased risk				
Environmental Tobacco Smoke exposure RISK Slightly increased, Highly confident	<i>Cohort studies</i> Rabinovitch 2011: ⁴² 6/9 <i>Cross-sectional</i> McCarville 2013: ⁶⁰ 8/10 Chilmonczyk 1993: ⁷⁴ 7/10 Dales 2002: ⁶² 7/10 Canino 2012: ⁸⁵ 2/10	<i>Case-control</i> Pyle 2015: ⁵¹ 6/9 <i>Cross-sectional</i> Rosas-Salazar 2013: ⁵⁵ 9/10 Quezada 2016: ⁸¹ 6/10		Varied results, but the largest study showed an association. Evidence of discrepancy between parental report and elevated cotinine levels.
Younger age RISK Slightly increased, Highly confident	<i>Cohort studies</i> Baltrus 2017: ¹⁸ 9/9 Schatz 2003: ³⁶ 6/9 Murray 1997: ³⁹ 6/9 <i>Cross-sectional</i> Sarpong 1997: ⁶¹ 8/10 Quezada 2016: ⁸¹ 6/10 Wood 2002: ⁸² 5/10		No Forest plot as data (reference groups, variable definitions) too variable.	Findings are consistent. The largest study (n=615,432) [Baltrus] did not specify the reference group for the logistic regression
Obesity/overweight RISK Slightly increased, highly confident	<i>Cohort studies</i> Black 2013: ²¹ 8/9 Schatz 2013: ³⁰ 7/9 <i>Cross-sectional</i> Quinto 2011: ⁵² 10/10 Stingone 2011: ⁸⁰ 6/10	<i>Cohort studies</i> Peters 2011: ²⁸ 8/9 Wu 2011: ³⁷ 6/9 <i>Cross-sectional</i> Lang 2012: ⁵⁸ 8/10 Mahut 2012: ⁶⁷ 7/10 Wiesenthal 2016: ⁶⁸ 7/10 Quezada 2016: ⁸¹ 6/10		The three large studies: Black 2013 (n>600,000); Schatz 2013 (n>4,000) and Quinto 2011 (n>32,000) were positive for oral steroid use (though Quinto did not show an association with hospitalisation). Apart from Lang 2012, the inconclusive studies were much smaller
Low parental education RISK Slightly increased, Moderately confident	<i>Case-control</i> Lieu 1997: ⁴⁹ 7/9 <i>Cross-sectional</i> Quinto 2011: ⁵² 10/10 Rosas-Salazar 2013: ⁵⁵ 9/10 Dales 2002: ⁶² 7/10			All four (including a large high quality cross-sectional study) showed a small effect on hospitalisation (but not oral steroid use).
Increased reliever use RISK Slightly increased, Moderately confidence	<i>Cohort</i> Thomas 2005: ²⁵ 8/9 Schatz 2003: ³⁶ 6/9 Zeiger 2012: ⁴³ 5/9 <i>Case-control</i> Lieu 1997: ⁴⁹ 7/9 <i>Cross-sectional</i> Vernacchio 2013: ⁵⁴ 9/10	<i>Cross-sectional</i> Rust 2013: ⁵³ 9/10 Quezada 2016: ⁸¹ 6/10		Relatively low doses of SABA; no data on very high doses

Figure 5 Slightly increased risk: evidence for risk factors and weighting decisions. Note: The scale on all the Forest plots has been curtailed at an OR of 8 to enable comparison between the plots for the different factors. If the CIs are very wide, and the upper limit extends beyond the plot this is indicated with a line with an arrow. (95% CIs are given in online supplementary table S2 if required.) SABA, short-acting beta₂ agonist.

Poverty (n=9)

Nine studies examined the effects of poverty (variously defined as annual family income <US\$15 000; <US\$20 000; <US\$40 000; receiving benefits) on risk of attacks in children with asthma. Seven studies had at least one positive association between risk of attacks and poverty level (ORs between 1.4 and 2.8).^{30 49 55 62 65 82 85} The exceptions were two small Puerto Rican studies.^{50 56} The Panel was moderately confident that poverty moderately increased risk of attacks.

Slightly increased risk of attacks

ETS exposure (n=8)

Five studies found at least one positive association between ETS exposure and asthma attacks.^{42 60 62 74 85} One high-quality cross-sectional study highlighted that the association between cotinine levels and risk of attack was lost when parent report was used to estimate ETS.⁶⁰ Of note, the three negative studies relied on parental report.^{51 55 82} The Panel was highly confident that ETS exposure was associated with a slightly increased risk of asthma attack (figure 5).

Younger age (n=6)

All six of the studies that examined the effect of age on risk of asthma attacks found that younger children (within the 5–12 age

range) were more likely to have an attack.^{18 36 39 61 81 82} The ORs ranged from 0.8 to 1.0 (indicating slightly decreased risk as age increased); the Panel was highly confident of this.

Overweight/obesity (n=10)

Four studies (including three very large high-quality studies) showed a significant, though small association between overweight or obesity and increased risk of attacks.^{21 30 52 80} The Panel was highly confident that there was a slightly increased risk of an attack in overweight or obese children.

Low parental education (n=4)

All four studies,^{49 52 55 62} including one large, high-quality cross-sectional study,⁵² showed slightly increased risk of attacks in children of families with low parental education level (ORs between 1.1 and 1.9). The Panel was moderately confident in this assessment.

No effect on risk of attacks

Gender (n=14)

Two studies found girls at an increased risk of attacks,^{52 53} and three found boys at increased risk^{18 60 65}; the other nine studies showed no gender difference.^{29 36 38 45 61 62 77 81 85} Thus, the Panel

Risk Factor Assessment	Studies with significant risk factors <i>Study design</i> Citation: ^{ref} Quality score	Studies with mixed or insignificant findings	Forest plots for studies reporting ORs able to be combined	Overall messages (rationale/caueat)
No increased risk				
Gender RISK No effect, Highly confident	MALE AT-RISK <i>Cohort studies</i> Baltrus 2017: ¹⁸ 9/9 <i>Cross-sectional</i> McCarville 2013: ⁶⁰ 8/10 Stingone 2006a: ⁶⁶ 7/10 FEMALE AT-RISK <i>Cross-sectional</i> Quinto 2011: ⁵² 10/10 Rust 2013: ⁵³ 9/10	<i>Cohort studies</i> Engelkes 2016: ²⁹ 7/9 Kwong 2012: ³⁸ 6/9 Schatz 2003: ³⁶ 6/9 Haltermann 2001: ⁴⁵ 5/9 <i>Cross-sectional</i> Sarpong 1997: ⁸¹ 8/10 Dales 2002: ⁶² 7/10 Akinbami 2009: ⁷⁷ 6/10 Quezada 2016: ⁸¹ 6/10 Canino 2012: ⁸⁵ 2/10		The largest study (Akinbami) was based on census data in the USA and showed no effect. The studies that showed an effect (Baltrus, McCarville and Stingone) were inconsistent in the direction of effect.
Hispanic ethnicity (US) No effect, Moderately confident	<i>Cohort studies</i> Baltrus 2017: ¹⁸ 9/9 Stewart 2010: ²² 8/9 <i>Cross-sectional</i> Stingone 2006a: ⁶⁶ 7/10 Wood 2002: ⁸² 5/10	<i>Cohort</i> Kwong 2012: ³⁸ 6/9 <i>Cross-sectional</i> Quinto 2011: ⁵² 10/10 Rust 2013: ⁵³ 9/10 McCarville 2013: ⁶⁰ 8/10 Findley 2003: ⁶³ 7/10		Substantial diversity in outcomes suggesting no consistent effect of Hispanic ethnicity on risk of attacks.
Urban residence No effect, slightly confident	<i>Case-control</i> Blatter 2016: ⁵⁰ 7/9	<i>Cohort study</i> Haltermann 2001: ⁴⁵ 5/9 <i>Cross-sectional</i> Rust 2013: ⁵³ 9/10 Pesek 2010: ⁵⁷ 8/10 Sarpong 1997: ⁸¹ 8/10 Brown 2012: ⁷³ 7/10	No Forest plot as data (reference groups, variable definitions) too variable.	Only one study showed an effect; the majority showed no effect. The two studies (Rust and Pesek) that were larger than 10,000 patients both showed no effect
Confounded by severity	Controller medication use; Nebuliser use; Ownership of a written action plan; Attendance at routine asthma reviews			
Inconclusive	Reduced lung function; FeNO testing at routine reviews; Positive skin prick tests; History of allergen exposure			
Insufficient evidence	Serum total IgE; Family history of atopy; Age of onset of asthma; Duration of asthma; Co-morbidities (gastro-oesophageal reflux, diabetes); Special needs; Parental health; Parental marital status			

Figure 6 No increased risk, confounded and inconclusive factors: evidence for weighting decision. Note: The scale on all the Forest plots has been curtailed at an OR of 8 to enable comparison between the plots for the different factors. If the CIs are very wide, and the upper limit extends beyond the plot this is indicated with a line with an arrow. (95% CIs are given in online supplementary table S2 if required).

was highly confident that the child’s gender had no effect on risk of attacks (figure 6).

Hispanic population (n=9)

Overall, the findings in the US Hispanic population were inconsistent; with the majority of studies demonstrating no increased risk,^{38 60 63} or inconsistent risk across the outcome measures used.⁵² Four studies showed a small increased risk^{18 22 82} (one with very wide CIs⁶⁵) and one showed a reduced risk of emergency department visits.⁵³ The Panel thus concluded that overall there was no increased risk, but their confidence in this assessment was only moderate.

Urban residence/proximity to major roads (n=6)

One case-control study showed a small increased risk of attacks in children living very close to a major road.⁵⁰ The other five studies^{45 53 57 61 73} were negative including two large, high-quality cross-sectional studies, which controlled for a broad range of confounders.^{53 57} The Panel was slightly confident in their assessment of no effect.

Confounded by severity

Controller medication use, nebuliser use, ownership of written asthma action plans and routine asthma reviews were all

associated with increased risk of attacks and were considered by the panel to be confounded by severity. (For details see online supplementary tables S2 and S3).

Insufficient evidence to draw a conclusion

For 12 factors we found inconclusive/insufficient evidence to draw a conclusion. These are listed at the end of figure 6; details about why the data were considered to be inconclusive/insufficient are provided in online supplementary table S3, with full description of all the studies in online supplementary table S2.

DISCUSSION

Main findings

This systematic review aimed to identify factors which would identify children aged 5–12 years with asthma who are at increased risk of acute attacks. The child who had a history of previous attacks and persistent asthma symptoms was at greatly increased risk of a future attack, especially if they had poor access to care. Other key markers of moderately increased risk were a suboptimal drug regimen, comorbid atopic/allergic disease, African-American ethnicity, poverty and vitamin D deficiency. Younger age, exposure to ETS, being overweight and low parental education were associated with a slightly increased risk,

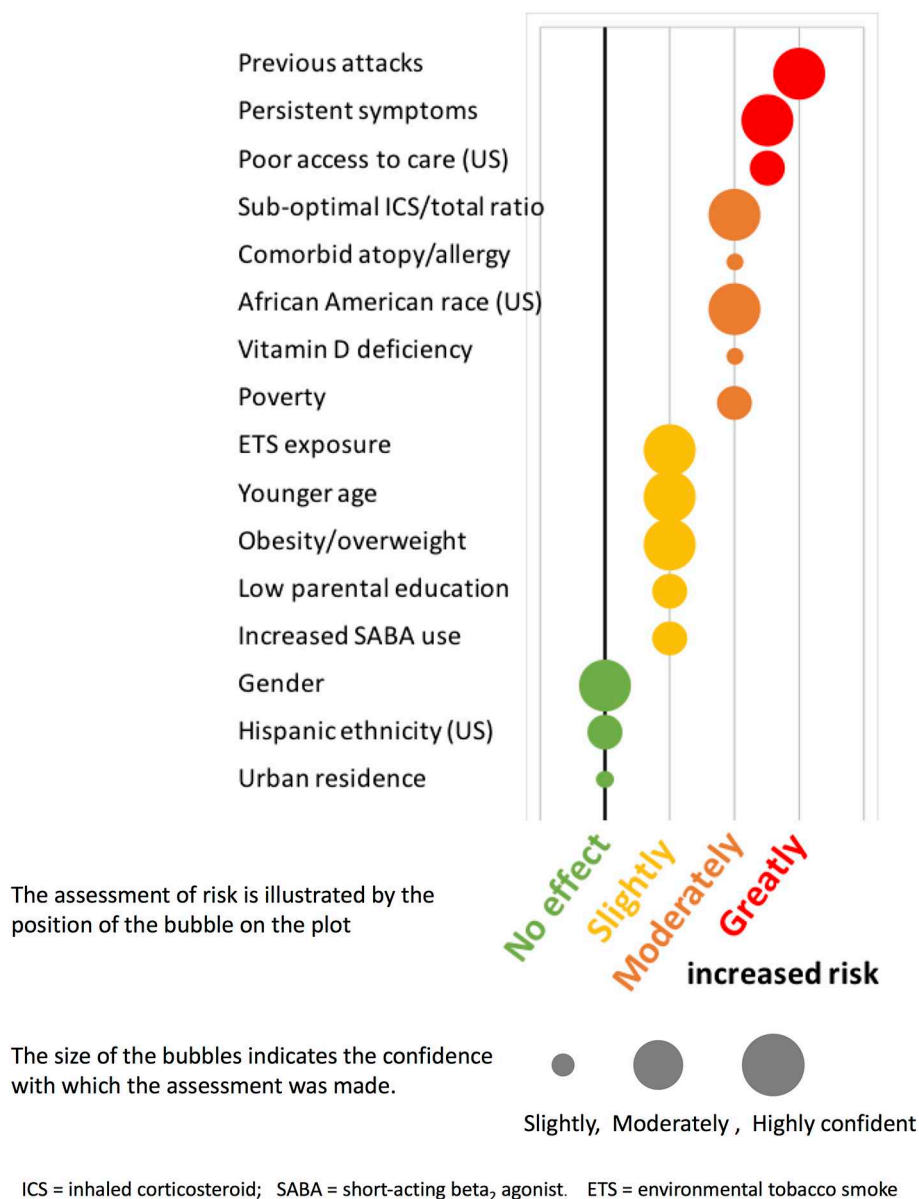


Figure 7 Summary of risk factors and weighting. ETS, environmental tobacco smoke; ICS, inhaled corticosteroid; SABA, short-acting beta₂ agonist.

but gender, urban residence and Hispanic ethnicity were not associated with increased risk.

Strengths and limitations

Despite our wide-ranging search strategies, we may not have identified all significant risk factors. Nevertheless, we identified papers related to almost all the predictors suggested by guidelines and experts in the field, lending face validity to our findings. The main omissions were that preterm delivery and eosinophilia were suggested, but not investigated as risk factors in any of the studies that we identified. That an additional 23 studies were found during forward and backward citations demonstrates the challenge in developing a comprehensive, but manageable, search strategy in such a broad area. There were some factors about which we found very little evidence and were thus unable to reach a conclusion (eg, comorbidities, parental health, FE_{NO} testing); lack of evidence, however, does not mean they are not significant factors. We excluded factors not available in routine clinical practice (eg, novel biomarkers⁸⁷) which means that our conclusions are immediately transferable

to contemporary clinical practice. The overweight of data from the USA (78% of studies included) limits the generalisability of the evidence for some factors (eg, ethnicity, poverty, access to healthcare) which may not be directly transferrable to other healthcare contexts.

The heterogeneity of the studies in terms of definitions of attacks (hospitalisations, emergency department visits, unscheduled GP care, oral steroids courses), thresholds applied to predictors (eg, definitions of persistent/severe symptoms, income levels associated with poverty, objective or reported assessment of ETS), duration of follow-up, provenance of data (collected for research or routine data) as well as study design and analysis precluded meta-analysis. To reduce potential subjectivity, we adopted a rigorous approach to weighting the factors using an Expert Panel's consensus to define initial weightings and a multidisciplinary end-of-project workshop at which the findings were discussed, refined and agreed. This breadth of internationally recognised professional experience (although all UK based) assisted the interpretation of our findings and lends credibility to our conclusions.

Implications for parents and clinical practice

Our findings suggest that it is possible to identify the 'high-risk' child with asthma. The factors associated with moderately or greatly increased risk are easily identifiable in routine practice. For example: a history of acute attacks, persistent troublesome symptoms, frequency of prescription requests and comorbid atopic/allergic conditions are recommended components of regular reviews,^{6 7 88} and knowledge of the social context is a core component of family medicine practice.^{89 90}

Identifying that their child is 'at-risk' enables parents to take decisions about modifying risk, such as reducing exposure to ETS, and reconsidering the necessity for controller treatment against their concern about harms of regular medication.⁹¹ Clinicians alerted to the 'at-risk' child can target care, specifically instituting evidence-based management (regular controllers^{6 7}; supported self-management⁹²) to reduce risk.

Implications for healthcare systems and policymakers

Poor access to care and living in poverty were important risk factors that should be targeted by policymakers and health service planners to reduce risk of acute attacks in children living in high-risk populations. At a public health level, strategies for reducing smoking⁹³ and targeting the growing epidemic of obesity in children²¹ will also contribute to reducing risk. In the USA, people from African-American communities living in deprived communities are at particular risk.

Implications for future research

Formal prognostic modelling is needed to validate the risk factors identified in this review,⁹⁴ and future research should assess whether risk assessment based on these factors improves outcomes when used prospectively in routine clinical practice. Nearly three-quarters of the studies in this review were performed in a US setting. Research is needed to understand the impact of variables such as poverty, urban/rural living, ethnicity and different rates of state/private/no medical insurance in other contexts.

CONCLUSION

It is possible with the information available in routine clinical practice to identify a child who is at increased risk of an acute attack. Many of the risk factors are potentially modifiable by parents acting to eliminate ETS or adhere to regular controller medication, by clinicians offering evidence-based treatment and self-management support, by healthcare systems ensuring equitable access to care and by policy initiatives addressing social deprivation and the public health challenges of smoking and obesity.

Acknowledgements We thank Marshall Dozier (Academic Support Librarian) for help with the search strategy, and Dr John Blakey for practical advice in the early stages.

Collaborators The ARC group members: Helen Benson; Steve Cunningham; Victoria Dalgliesh; Gwyneth Davies; Melissa Goodbourn; Susan Grieve; Jonathan Grigg; Hayley K Zislis; Erin McDonnell; Susan Morrow; Meagan Peterson; Daniel Russell; Jurgen Schwarze; San Selveindran; Nara Tagiyeva; Mike Thomas; Marissa Ware; Andrew Wilson.

Contributors HP led the development of the protocol, securing of funding, study administration, expert panel, workshop and writing of the paper. AS, SJ, AB, JH and MS contributed to the development of the protocol. SJ provided statistical advice. AudB and SMcL undertook the screening, data extraction and presentation of results. HP, JYP, JH, MS, AudB and JFK formed the expert panel. All authors contributed to the interpretation of the findings. AudB wrote the initial draft of the paper with SMcL and HP, to which all the authors contributed. HP is the study guarantor.

Funding This research was supported by Asthma UK (Ref: AUK-SR-2015-01), with

contributions from the Asthma UK Centre for Applied Research (AUK-AC-2012-01). AS is supported by the Farr Institute which is funded by a consortium of funders headed by the MRC.

Competing interests None declared.

Patient consent Not required.

Provenance and peer review Not commissioned; externally peer reviewed.

Data sharing statement All data are provided in the manuscript and online supplementary tables.

Open Access This is an Open Access article distributed in accordance with the Creative Commons Attribution Non Commercial (CC BY-NC 4.0) license, which permits others to distribute, remix, adapt, build upon this work non-commercially, and license their derivative works on different terms, provided the original work is properly cited and the use is non-commercial. See: <http://creativecommons.org/licenses/by-nc/4.0/>

© Article author(s) or their employer(s) unless otherwise stated in the text of the article) 2018. All rights reserved. No commercial use is permitted unless otherwise expressly granted.

REFERENCES

- Gibson GJ, Lodenkemper R, Sibille Y, *et al.* *The European Lung White Book: Respiratory health and disease in Europe*. Sheffield, UK: European Respiratory Society, 2013.
- Mukherjee M, Stoddart A, Gupta RP, *et al.* The epidemiology, healthcare and societal burden and costs of asthma in the UK and its member nations: analyses of standalone and linked national databases. *BMC Med* 2016;14:113.
- Bahadori K, Doyle-Waters MM, Marra C, *et al.* Economic burden of asthma: a systematic review. *BMC Pulm Med* 2009;9:24.
- Royal College of Physicians. *Why asthma still kills: the National Review of Asthma Deaths (NRAD) Confidential Enquiry report*. London: RCP, 2014.
- Bai TR, Vonk JM, Postma DS, *et al.* Severe exacerbations predict excess lung function decline in asthma. *Eur Respir J* 2007;30:452–6.
- Global Initiative for Asthma. *Global Strategy for Asthma Management and Prevention*. 2017. <http://www.ginasthma.org> (accessed Aug 2017).
- British Thoracic Society/Scottish Intercollegiate Guideline Network. *British Guideline on the Management of Asthma*. 2016. <http://www.sign.ac.uk/sign-153-british-guideline-on-the-management-of-asthma.html> (accessed Aug 2017).
- Juniper EF, Gruffydd-Jones K, Ward S, *et al.* Asthma Control Questionnaire in children: validation, measurement properties, interpretation. *Eur Respir J* 2010;36:1410–6.
- Liu AH, Zeiger R, Sorkness C, *et al.* Development and cross-sectional validation of the childhood asthma control test. *J Allergy Clin Immunol* 2007;119:817–25.
- Pinnock H, Burton C, Campbell S, *et al.* Clinical implications of the Royal College of Physicians three questions in routine asthma care: a real-life validation study. *Prim Care Respir J* 2012;21:288–94.
- Tagiyeva N, McLean S, Sheikh A, *et al.* Protocol for a systematic review to identify and weight the indicators of risk of asthma exacerbations in children aged 5–12 years. *NPJ Prim Care Respir Med* 2017;27:16088.
- Higgins JPT, Green S. *Cochrane Handbook for Systematic Reviews of Interventions* Version 5.1.0. <http://handbook.cochrane.org> (accessed Aug 2017).
- Moher D, Liberati A, Tetzlaff J, *et al.* Preferred reporting items for systematic reviews and meta-analyses: the PRISMA statement. *PLoS Med* 2009;6:e1000097.
- Reddel HK, Taylor DR, Bateman ED, *et al.* on behalf of the ATS/ERS Task Force on Asthma Control and Exacerbations: An Official American Thoracic Society/European Respiratory Society statement: asthma control and exacerbations standardizing endpoints for clinical asthma trials and clinical practice. *Am J Respir Crit Care Med* 2009;180:59–99.
- Wells GA, Shea B, O'Connell D, *et al.* The Newcastle-Ottawa Scale (NOS) for assessing the quality of non-randomised studies in meta-analyses. http://www.ohri.ca/programs/clinical_epidemiology/oxford.asp (accessed Aug 2017).
- Cochrane Effective Practice and Organisation of Care. *EPOC resources for review authors*. <http://epoc.cochrane.org/resources/epoc-resources-review-authors> (Accessed August 2017).
- Greenhalgh T, Peacock R. Effectiveness and efficiency of search methods in systematic reviews of complex evidence: audit of primary sources. *BMJ* 2005;331:1064–5.
- Baltrus P, Xu J, Immergluck L, *et al.* Individual and county level predictors of asthma related emergency department visits among children on Medicaid: a multilevel approach. *J Asthma* 2017;54:53–61.
- Adams RJ, Fuhlbrigge A, Finkelstein JA, *et al.* Impact of inhaled anti-inflammatory therapy on hospitalization and emergency department visits for children with asthma. *Pediatrics* 2001;107:706–11.
- Robroeks CM, van Vliet D, Jöbsis Q, *et al.* Prediction of asthma exacerbations in children: results of a one-year prospective study. *Clin Exp Allergy* 2012;42:792–8.
- Black MH, Zhou H, Takayanagi M, *et al.* Increased asthma risk and asthma-related health care complications associated with childhood obesity. *Am J Epidemiol* 2013;178:1120–8.

- 22 Stewart KA, Higgins PC, McLaughlin CG, *et al.* Differences in prevalence, treatment, and outcomes of asthma among a diverse population of children with equal access to care: findings from a study in the military health system. *Arch Pediatr Adolesc Med* 2010;164:720–6.
- 23 Spahn J, Sheth K, Yeh WS, *et al.* Dispensing of fluticasone propionate/salmeterol combination in the summer and asthma-related outcomes in the fall. *J Allergy Clin Immunol* 2009;124:1197–203.
- 24 Andrews AL, Simpson AN, Basco WT, *et al.* Asthma medication ratio predicts emergency department visits and hospitalizations in children with asthma. *Medicaid Res Rev* 2013;3:E1–10.
- 25 Thomas M, Kocevar VS, Zhang Q, *et al.* Asthma-related health care resource use among asthmatic children with and without concomitant allergic rhinitis. *Pediatrics* 2005;115:129–34.
- 26 Zhang T, Smith MA, Camp PG, *et al.* High use of health services in patients with suboptimal asthma drug regimens: a population-based assessment in British Columbia, Canada. *Pharmacoepidemiol Drug Saf* 2013;22:744–51.
- 27 Haselkorn T, Zeiger RS, Chipps BE, *et al.* Recent asthma exacerbations predict future exacerbations in children with severe or difficult-to-treat asthma. *J Allergy Clin Immunol* 2009;124:921–7.
- 28 Peters JI, McKinney JM, Smith B, *et al.* Impact of obesity in asthma: evidence from a large prospective disease management study. *Ann Allergy Asthma Immunol* 2011;106:30–5.
- 29 Engelkes M, Janssens HM, de Ridder MA, *et al.* Real life data on incidence and risk factors of severe asthma exacerbations in children in primary care. *Respir Med* 2016;119:48–54.
- 30 Schatz M, Zeiger RS, Zhang F, *et al.* Overweight/obesity and risk of seasonal asthma exacerbations. *J Allergy Clin Immunol Pract* 2013;1:618–22.
- 31 Farber HJ, Chi FW, Capra A, *et al.* Use of asthma medication dispensing patterns to predict risk of adverse health outcomes: a study of Medicaid-insured children in managed care programs. *Ann Allergy Asthma Immunol* 2004;92:319–28.
- 32 Brehm JM, Schuermann B, Fuhlbrigge AL, *et al.* Serum vitamin D levels and severe asthma exacerbations in the Childhood Asthma Management Program study. *J Allergy Clin Immunol* 2010;126:52–8.
- 33 Pongracic JA, Visness CM, Gruchalla RS, *et al.* Effect of mouse allergen and rodent environmental intervention on asthma in inner-city children. *Ann Allergy Asthma Immunol* 2008;101:35–41.
- 34 Pongracic JA, O'Connor GT, Muilenberg ML, *et al.* Differential effects of outdoor versus indoor fungal spores on asthma morbidity in inner-city children. *J Allergy Clin Immunol* 2010;125:593–9.
- 35 Tolomeo C, Savrin C, Heinzer M, *et al.* Predictors of asthma-related pediatric emergency department visits and hospitalizations. *J Asthma* 2009;46:829–34.
- 36 Schatz M, Cook EF, Joshua A, *et al.* Risk factors for asthma hospitalizations in a managed care organization: development of a clinical prediction rule. *Am J Manag Care* 2003;9:538–47.
- 37 Wu AC, Tantisira K, Li L, *et al.* Predictors of symptoms are different from predictors of severe exacerbations from asthma in children. *Chest* 2011;140:100–7.
- 38 Kwong KY, Morphew T, Scott L, *et al.* Asthma control and future asthma-related morbidity in inner-city asthmatic children. *Ann Allergy Asthma Immunol* 2008;101:144–52.
- 39 Murray MD, Stang P, Tierney WM. Health care use by inner-city patients with asthma. *J Clin Epidemiol* 1997;50:167–74.
- 40 McCormack MC, Aloe C, Curtin-Brosnan J, *et al.* Guideline-recommended fractional exhaled nitric oxide is a poor predictor of health-care use among inner-city children and adolescents receiving usual asthma care. *Chest* 2013;144:923–9.
- 41 Haselkorn T, Fish JE, Zeiger RS, *et al.* Consistently very poorly controlled asthma, as defined by the impairment domain of the Expert Panel Report 3 guidelines, increases risk for future severe asthma exacerbations in The Epidemiology and Natural History of Asthma: Outcomes and Treatment Regimens (TENOR) study. *J Allergy Clin Immunol* 2009;124:895–902.
- 42 Rabinovitch N, Reisdorph N, Silveira L, *et al.* Urinary leukotriene E4 levels identify children with tobacco smoke exposure at risk for asthma exacerbation. *J Allergy Clin Immunol* 2011;128:323–7.
- 43 Zeiger RS, Yegin A, Simons FE, *et al.* Evaluation of the National Heart, Lung, and Blood Institute guidelines impairment domain for classifying asthma control and predicting asthma exacerbations. *Ann Allergy Asthma Immunol* 2012;108:81–7.
- 44 Covar RA, Szeffer SJ, Zeiger RS, *et al.* Factors associated with asthma exacerbations during a long-term clinical trial of controller medications in children. *J Allergy Clin Immunol* 2008;122:741–7.
- 45 Halterman JS, Yoos HL, Sidora K, *et al.* Medication use and health care contacts among symptomatic children with asthma. *Ambul Pediatr* 2001;1:275–9.
- 46 Torjusen EN, Diette GB, Breyse PN, *et al.* Dose-response relationships between mouse allergen exposure and asthma morbidity among urban children and adolescents. *Indoor Air* 2013;23:268–74.
- 47 Visser CA, Brand PL. Does a single measurement of exhaled nitric oxide predict asthma exacerbations? *Arch Dis Child* 2011;96:781–2.
- 48 Vasbinder EC, Belitser SV, Souverein PC, *et al.* Non-adherence to inhaled corticosteroids and the risk of asthma exacerbations in children. *Patient Prefer Adherence* 2016;10:531–8.
- 49 Lieu TA, Quesenberry CP, Capra AM, *et al.* Outpatient management practices associated with reduced risk of pediatric asthma hospitalization and emergency department visits. *Pediatrics* 1997;100:334–41.
- 50 Blatter J, Brehm JM, Sordillo J, *et al.* Folate deficiency, atopy, and severe asthma exacerbations in Puerto Rican Children. *Ann Am Thorac Soc* 2016;13:223–32.
- 51 Pyle RC, Divekar R, May SM, *et al.* Asthma-associated comorbidities in children with and without secondhand smoke exposure. *Ann Allergy Asthma Immunol* 2015;115:205–10.
- 52 Quinto KB, Zuraw BL, Poon KY, *et al.* The association of obesity and asthma severity and control in children. *J Allergy Clin Immunol* 2011;128:964–9.
- 53 Rust G, Zhang S, Reynolds J. Inhaled corticosteroid adherence and emergency department utilization among Medicaid-enrolled children with asthma. *J Asthma* 2013;50:769–75.
- 54 Vernacchio L, Trudell EK, Muto JM. Correlation of care process measures with childhood asthma exacerbations. *Pediatrics* 2013;131:e136–43.
- 55 Rosas-Salazar C, Ramratnam SK, Brehm JM, *et al.* Parental numeracy and asthma exacerbations in Puerto Rican children. *Chest* 2013;144:92–8.
- 56 Brehm JM, Acosta-Pérez E, Klei L, *et al.* Vitamin D insufficiency and severe asthma exacerbations in Puerto Rican children. *Am J Respir Crit Care Med* 2012;186:140–6.
- 57 Pesek RD, Vargas PA, Halterman JS, *et al.* A comparison of asthma prevalence and morbidity between rural and urban schoolchildren in Arkansas. *Ann Allergy Asthma Immunol* 2010;104:125–31.
- 58 Lang JE, Hossain J, Smith K, *et al.* Asthma severity, exacerbation risk, and controller treatment burden in underweight and obese children. *J Asthma* 2012;49:456–63.
- 59 Bacharier LB, Dawson C, Bloomberg GR, *et al.* Hospitalization for asthma: atopic, pulmonary function, and psychological correlates among participants in the Childhood Asthma Management Program. *Pediatrics* 2003;112:e85–92.
- 60 McCarville M, Sohn MW, Oh E, *et al.* Environmental tobacco smoke and asthma exacerbations and severity: the difference between measured and reported exposure. *Arch Dis Child* 2013;98:510–4.
- 61 Sarpong SB, Karrison T. Sensitization to indoor allergens and the risk for asthma hospitalization in children. *Ann Allergy Asthma Immunol* 1997;79:455–9.
- 62 Dales RE, Choi B, Chen Y, *et al.* Influence of family income on hospital visits for asthma among Canadian school children. *Thorax* 2002;57:513–7.
- 63 Findley S, Lawler K, Bindra M, *et al.* Elevated asthma and indoor environmental exposures among Puerto Rican children of East Harlem. *J Asthma* 2003;40:557–69.
- 64 Arabkhaezali A, Vijverberg SJ, van Erp FC, *et al.* Characteristics and severity of asthma in children with and without atopic conditions: a cross-sectional study. *BMC Pediatr* 2015;15:172.
- 65 Stingone JA, Claudio L. Asthma and enrollment in special education among urban schoolchildren. *Am J Public Health* 2006;96:1593–8.
- 66 Stingone JA, Claudio L. Disparities in the use of urgent health care services among asthmatic children. *Ann Allergy Asthma Immunol* 2006;97:244–50.
- 67 Mahut B, Beydon N, Delclaux C. Overweight is not a comorbidity factor during childhood asthma: the GrowthOb study. *Eur Respir J* 2012;39:1120–6.
- 68 Wiesenthal EN, Fagnano M, Cook S, *et al.* Asthma and overweight/obese: double trouble for urban children. *J Asthma* 2016;53:485–91.
- 69 Forno E, Fuhlbrigge A, Soto-Quirós ME, *et al.* Risk factors and predictive clinical scores for asthma exacerbations in childhood. *Chest* 2010;138:1156–65.
- 70 Friedlander JL, Sheehan WJ, Baxi SN, *et al.* Food allergy and increased asthma morbidity in a school-based inner-city asthma study. *J Allergy Clin Immunol* 2013;147:9–84.
- 71 Sunshine J, Song L, Krieger J. Written action plan use in inner-city children: is it independently associated with improved asthma outcomes? *Ann Allergy Asthma Immunol* 2011;107:207–13.
- 72 Castro-Rodriguez JA, Ramirez AM, Toche P, *et al.* Clinical, functional, and epidemiological differences between atopic and nonatopic asthmatic children from a tertiary care hospital in a developing country. *Ann Allergy Asthma Immunol* 2007;98:239–44.
- 73 Brown MS, Sarnat SE, DeMuth KA, *et al.* Residential proximity to a major roadway is associated with features of asthma control in children. *PLoS One* 2012;7:e37044.
- 74 Chilmoneczyk BA, Salmun LM, Megathlin KN, *et al.* Association between exposure to environmental tobacco smoke and exacerbations of asthma in children. *N Engl J Med* 1993;328:1665–9.
- 75 Lasmar LMLBF, Camargos PAM, Ordoñez AB, *et al.* Prevalence of allergic rhinitis and its impact on the use of emergency care services in a group of children and adolescents with moderate to severe persistent asthma. *J Pediatr* 2007;83:555–61.
- 76 Rabito FA, Carlson J, Holt EW, *et al.* Cockroach exposure independent of sensitization status and association with hospitalizations for asthma in inner-city children. *Ann Allergy Asthma Immunol* 2011;106:103–9.
- 77 Akinbami LJ, Moorman JE, Garbe PL, *et al.* Status of childhood asthma in the United States, 1980–2007. *Pediatrics* 2009;123(Suppl3):S131–45.
- 78 Malhotra K, Baltrus P, Zhang S, *et al.* Geographic and racial variation in asthma prevalence and emergency department use among Medicaid-enrolled children in 14 southern states. *J Asthma* 2014;51:913–21.
- 79 Pinto Pereira LM, Jackman J, Figaro N, *et al.* Health burden of co-morbid asthma and allergic rhinitis in West Indian children. *Allergol Immunopathol* 2010;38:129–34.
- 80 Stingone JA, Ramirez OF, Svensson K, *et al.* Prevalence, demographics, and health outcomes of comorbid asthma and overweight in urban children. *J Asthma* 2011;48:876–85.

- 81 Quezada W, Kwak ES, Reibman J, *et al.* Predictors of asthma exacerbation among patients with poorly controlled asthma despite inhaled corticosteroid treatment. *Ann Allergy Asthma Immunol* 2016;116:112–7.
- 82 Wood PR, Smith LA, Romero D, *et al.* Relationships between welfare status, health insurance status, and health and medical care among children with asthma. *Am J Public Health* 2002;92:1446–52.
- 83 Searing DA, Zhang Y, Murphy JR, *et al.* Decreased serum vitamin D levels in children with asthma are associated with increased corticosteroid use. *J Allergy Clin Immunol* 2010;125:995–1000.
- 84 Butz AM, Eggleston P, Huss K, *et al.* Nebulizer use in inner-city children with asthma: morbidity, medication use, and asthma management practices. *Arch Pediatr Adolesc Med* 2000;154:984–90.
- 85 Canino G, Garro A, Alvarez MM, *et al.* Factors associated with disparities in emergency department use among Latino children with asthma. *Ann Allergy Asthma Immunol* 2012;108:266–70.
- 86 National Committee for Quality Assurance. Use of appropriate medications for people with asthma and medication management for people with asthma. <http://www.ncqa.org/report-cards/health-plans/state-of-health-care-quality/2016-table-of-contents/asthma> (accessed Jun 2017).
- 87 Puranik S, Forno E, Bush A, *et al.* Predicting severe asthma exacerbations in children. *Am J Respir Crit Care Med* 2017;195:854–9.
- 88 Pinnock H, Fletcher M, Holmes S, *et al.* Setting the standard for routine asthma consultations: a discussion of the aims, process and outcomes of reviewing people with asthma in primary care. *Prim Care Respir J* 2010;19:75–83.
- 89 WONCA Europe. *The European definition of General Practice and Family Medicine*. 3rd Edn, 2011. (accessed Jun 2017).
- 90 Eaton S, Roberts S, Turner B. Delivering person centred care in long term conditions. *BMJ* 2015;350:h181.
- 91 Horne R, Chapman SC, Parham R, *et al.* Understanding patients' adherence-related beliefs about medicines prescribed for long-term conditions: a meta-analytic review of the Necessity-Concerns Framework. *PLoS One* 2013;8:e80633.
- 92 Pinnock H, Parke HL, Panagioti M, *et al.* Systematic meta-review of supported self-management for asthma: a healthcare perspective. *BMC Med* 2017;15:64.
- 93 Mackay D, Haw S, Ayres JG, *et al.* Smoke-free legislation and hospitalizations for childhood asthma. *N Engl J Med* 2010;363:1139–45.
- 94 Riley RD, Hayden JA, Steyerberg EW, *et al.* Prognosis Research Strategy (PROGRESS) 2: prognostic factor research. *PLoS Med* 2013;10:e1001380.