

This is a repository copy of *Distant from input: Evidence of regions within the default mode network supporting perceptually-decoupled and conceptually-guided cognition*.

White Rose Research Online URL for this paper:

<https://eprints.whiterose.ac.uk/128477/>

Version: Published Version

---

**Article:**

Murphy, Charlotte, Jefferies, Elizabeth orcid.org/0000-0002-3826-4330, Rueschemeyer, Shirley-Ann orcid.org/0000-0001-6432-0917 et al. (4 more authors) (2018) Distant from input: Evidence of regions within the default mode network supporting perceptually-decoupled and conceptually-guided cognition. *Neuroimage*. pp. 393-401. ISSN 1053-8119

<https://doi.org/10.1016/j.neuroimage.2018.01.017>

---

**Reuse**

This article is distributed under the terms of the Creative Commons Attribution (CC BY) licence. This licence allows you to distribute, remix, tweak, and build upon the work, even commercially, as long as you credit the authors for the original work. More information and the full terms of the licence here:

<https://creativecommons.org/licenses/>

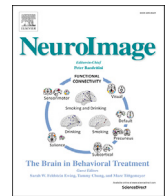
**Takedown**

If you consider content in White Rose Research Online to be in breach of UK law, please notify us by emailing [eprints@whiterose.ac.uk](mailto:eprints@whiterose.ac.uk) including the URL of the record and the reason for the withdrawal request.



Contents lists available at ScienceDirect

NeuroImage

journal homepage: [www.elsevier.com/locate/neuroimage](http://www.elsevier.com/locate/neuroimage)

## Distant from input: Evidence of regions within the default mode network supporting perceptually-decoupled and conceptually-guided cognition



Charlotte Murphy<sup>a,\*</sup>, Elizabeth Jefferies<sup>a</sup>, Shirley-Ann Rueschemeyer<sup>a</sup>, Mladen Sormaz<sup>a</sup>, Hao-ting Wang<sup>a</sup>, Daniel S. Margulies<sup>b</sup>, Jonathan Smallwood<sup>a</sup>

<sup>a</sup> Department of Psychology / York Neuroimaging Centre, University of York, UK

<sup>b</sup> Max Planck Research Group for Neuroanatomy & Connectivity, Max Planck Institute for Human Cognitive and Brain Sciences, Leipzig, Germany

### ARTICLE INFO

#### Keywords:

Transmodal cortex  
Default mode network  
Semantic  
Conceptual processing  
Stimulus independence

### ABSTRACT

The default mode network supports a variety of mental operations such as semantic processing, episodic memory retrieval, mental time travel and mind-wandering, yet the commonalities between these functions remains unclear. One possibility is that this system supports cognition that is independent of the immediate environment; alternatively or additionally, it might support higher-order conceptual representations that draw together multiple features. We tested these accounts using a novel paradigm that separately manipulated the availability of perceptual information to guide decision-making and the representational complexity of this information. Using task based imaging we established regions that respond when cognition combines both stimulus independence with multi-modal information. These included left and right angular gyri and the left middle temporal gyrus. Although these sites were within the default mode network, they showed a stronger response to demanding memory judgements than to an easier perceptual task, contrary to the view that they support automatic aspects of cognition. In a subsequent analysis, we showed that these regions were located at the extreme end of a macroscale gradient, which describes gradual transitions from sensorimotor to transmodal cortex. This shift in the focus of neural activity towards transmodal, default mode, regions might reflect a process of where the functional distance from specific sensory enables conceptually rich and detailed cognitive states to be generated in the absence of input.

### Introduction

Although initial studies characterized the default mode network (DMN) as “task negative”, this network actively supports aspects of cognition (Spreng, 2012), including semantic processing (Binder et al., 2009; Krieger-Redwood et al., 2016), episodic recollection (Rugg and Vilberg, 2013), working memory (Konishi et al., 2015; Spreng et al., 2014; Vatansver et al., 2015), autobiographical planning (Spreng et al., 2015; Spreng et al., 2010), divergent thinking (Benedek et al., 2016) self-generation of emotion (Engen et al., 2017) and imagining the future or the past (Schacter and Addis, 2007). Although we lack an over-arching account of the functions of the DMN, many of these situations involve memory retrieval – i.e., a requirement to focus cognition on previously-encoded knowledge, as opposed to information in the external environment. In line with this account, many regions within or allied to the DMN are considered to be heteromodal ‘hubs’ for memory-related processes, including the posterior cingulate cortex

(Leech et al., 2012; Leech and Sharp, 2014), angular gyrus (Bonnici et al., 2016; Seghier, 2013), hippocampus (Moscovitch et al., 2016) and anterior temporal lobes (Visser et al., 2010). In addition, cognitive states that activate the DMN often involves meaningful content that has personal relevance (Gusnard et al., 2001).

The current study was motivated by the hypothesis that there might be common neurocognitive processes underpinning perceptually-decoupled and conceptually-guided cognition in the DMN. During states of episodic recollection, we recreate past experiences that involve places, objects and people not currently present in the environment. Consequently, memory retrieval might necessitate a process of decoupling from sensory-motor systems, allowing cognition to be generated internally in a way that diverges from what is going on around us (Smallwood, 2013). These perceptually-decoupled states might be easier in brain regions whose neural computations are functionally independent, or distant, from systems important for perceiving and acting. This is consistent with the observation that the distributed regions of the DMN

\* Corresponding author. Department of Psychology / York Neuroimaging Centre, University of York, UK.  
E-mail address: [charlotte.murphy@york.ac.uk](mailto:charlotte.murphy@york.ac.uk) (C. Murphy).

<https://doi.org/10.1016/j.neuroimage.2018.01.017>

Received 22 June 2017; Received in revised form 9 January 2018; Accepted 9 January 2018

Available online 12 January 2018

1053-8119/© 2018 The Authors. Published by Elsevier Inc. This is an open access article under the CC BY license (<http://creativecommons.org/licenses/by/4.0/>).

are maximally distant from primary visual and motor cortex, both in terms of their distinct patterns of functional connectivity and their positions along the cortical surface (Margulies et al., 2016).

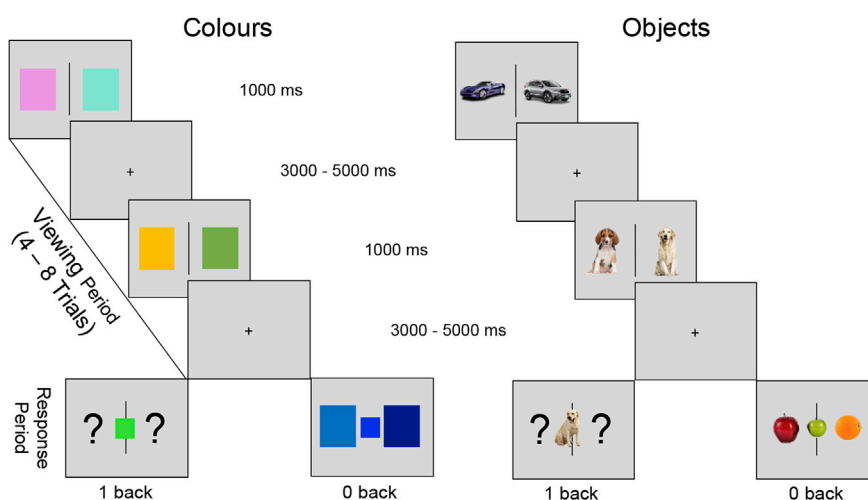
In addition, DMN regions might support higher-order representations with predictive value across multiple situations and modalities, which integrate features from diverse sensory-motor regions. Contemporary accounts of semantic representation (Ralph et al., 2017) envisage an interaction between unimodal brain regions that support knowledge about specific features (e.g., knowledge that BANANAS are YELLOW and CURVED in visual cortex) and heteromodal regions within or allied to the DMN, which extract deeper similarity structures across these domains (i.e., allow us to understand that BANANA and KIWI are conceptually related, despite salient differences in colour, shape etc.). This view is also consistent with the observation that DMN lies at the extreme end of a gradient from heteromodal to unimodal cortex (Margulies et al., 2016), since increasingly abstract and complex representations might be formed at greater distances along the gradient, where the influence of specific features linked to stimuli in the immediate environment is reduced (Buckner and Krienen, 2013; Margulies et al., 2016; Mesulam, 1998). Within the DMN, angular gyrus (Binder and Desai, 2011; Bonner et al., 2013) and anterior temporal cortex (Patterson et al., 2007; Ralph et al., 2017) are both implicated in heteromodal semantic processing. However, their roles remain controversial since other regions such as left inferior frontal gyrus and posterior aspects of the temporal lobe frequently show stronger task-induced activation in fMRI. Angular gyrus, in particular, typically shows a pattern of task-induced deactivation, which is greater for harder judgements in both semantic and non-semantic tasks (Humphreys and Lambon Ralph, 2014; Humphreys et al., 2015). In addition, despite commonalities in the intrinsic connectivity of these regions, differences in semantic content have been proposed although not broadly accepted (Jackson et al., 2016): the anterior temporal lobes might support object identification, while angular gyrus is potentially more sensitive to thematic associations (Davey et al., 2015; Schwartz et al., 2011).

We developed a novel paradigm to identify brain regions important for stimulus independence, more complex memory representations and the combination of both features in cognition. Our experiment builds on prior work by Konishi and colleagues (Konishi et al., 2015). In their study, participants kept track of the location of pairs of simple shapes (triangles, squares and circles) presented either side of fixation. When

probed with one shape from a prior trial and asked which side of the screen it was presented on, activity increased in regions including those within the DMN. The current study extended this paradigm by varying the complexity of the information to be encoded and retrieved. In one condition participants keep track of the location of pairs of stimuli that vary on a single feature (coloured patches), in a second they keep track of stimuli that vary in a more complex manner (pairs of familiar real world objects such as dogs or cars). Objects place greater demands on memory than do colours because they are distinguished based on a greater number of features. This allowed us to contrast higher and lower levels of representational complexity in the perceptual representations and memories that would be probed. We also manipulated whether these decisions were made when the relevant information is on the screen (0 – back) or when only the identity of the target upon which the decision is based is present (1 – back). In the latter case the relevant spatial information must be retrieved from memory, a manipulation that allowed us to explore the property of stimulus independence in cognition. This paradigm is presented schematically in Fig. 1.

We used this paradigm in a functional magnetic resonance imaging (fMRI) experiment to localize the brain regions that support the properties of stimulus independence and representational complexity. Our aim was to establish whether regions sensitive to perceptual decoupling and conceptual retrieval fall within the DMN, and whether these effects were located in overlapping or distinct regions. We identified regions of cortex that respond: (i) to stimuli with a rich multi-modal structure by comparing the response of objects to colours, (ii) when decision making has a higher reliance on memory by comparing decisions that are made in the 1-back condition with those made in the 0-back conditions, and (iii) to conditions that require a combination of both elements of cognition. We tested these hypotheses using both standard whole brain uni-variate analyses, as well as characterizing neural activity in each condition in terms of its position on the macroscale gradient from unimodal to heteromodal cortex described by Margulies et al. (2016).

If regions in the DMN are activated when spatial decisions are guided by information from memory, this would support a role in stimulus independent decision making. Alternatively, if DMN regions respond to decisions made regarding objects rather than colours, this would reflect a role in the processing of information with a high degree of representational complexity. Finally, if DMN regions show the strongest response when spatial decisions are made based on objects from memory, these



**Figure 1.** Experimental design. The four different judgments that participants made in this experiment. Four conditions: (A) Colour-1back, (B) Colour-0back, (C) Semantic 1-back and (D) Semantic 0-back. Each condition was presented in a block design. Each block began with written instructions stating the task type (0-back or 1-back). Blocks consisted of observing pairs of items (1000 ms), each pair was separated by a jittered inter-stimulus interval (ISI; 3000–5000 ms). At random periods of time (between 4 and 8 pair trials) participants would observe a catch-trial (highlighted by the response period row) where a third item was presented in the centre of the screen. This paradigm requires participants to indicate the location of the same stimulus (for example the position of a Labrador) which depends on whether the stimulus is immediately present or absent at the point at which the decision is made. In the 0-back catch-trials participants had to decide which side of the screen the third item was representing (stimulus immediately present). In the 1-back catch-trials participants had to decide which side of the screen the third item was representing in the previous trial (stimulus absent). All colour blocks contained pairs of coloured squares, during the response

period participants were required to make a perceptual decision and indicate which square was perceptually most similar to the centre item. All object blocks contained pairs of objects from the same semantic category (e.g., two fruit; apple and orange) and were required to make a conceptual decision and indicate which object was conceptually most similar to the centre item (e.g., the green apple is conceptually most similar to the red apple than the orange, despite it being perceptually different).

regions would support more complex stimulus independent representational states. This latter pattern would be consistent with the hypothesis that decoupling from perceptual input enables cognition to represent information that diverges in content from what is going on around us (Smallwood, 2013). Moreover, if this processing emerges in regions located towards the transmodal end of the principle gradient, this would support the hypothesis that the functional “distance” from systems important for perceiving and acting, provides a cortical mechanism that underpins the processing of complex representations derived from memory (Margulies et al., 2016).

## Material and methods

### Participants

Thirty right-handed native British-speaking participants with normal or corrected-to-normal vision were recruited from the University of York (16 female; mean age 22.68, range 18–34 years). One participant's data was excluded due to excessive motion artefacts, leaving twenty-nine subjects in the final analysis for (15 female; mean age 22.57, range 18–24 years). In a subsequent analysis we used a set of 60 participants' resting state data, including the same individuals who performed the task (34 female; mean age 20.32, range 18–29 years). Both studies were approved by the York Neuroimaging Centre (YNIC) Ethics Committee. Participant's provided informed consent prior to the start of the experimental session.

### Stimuli

The task paradigm had four conditions: (A) Object 0-back, (B) Object 1-back, (C) Colour 0-back and (D) Colour 1-back using a block design. In all conditions, pairs of items were presented separated by a central line. In the colour conditions, these were different coloured squares, while in the object conditions, these were familiar and meaningful objects, taken from the same semantic category (different types of cars, fruit, vegetables, mammals, insects, marine animals, instruments, household objects, sports equipment and plants; see Fig. 1). In total there were 240 pairs of coloured items and 240 pairs of objects. Images were taken from a database of Coloured semantic stimuli, cropped and superimposed onto a white background, that have been used in prior investigations of semantic processing (Davey et al., 2015; Gardner et al., 2012; Thompson et al., 2015). Items were presented once with no repetition. The contrast between object and colour conditions allowed us to investigate regions that are important for the retrieval of conceptual information. The colour patches only varied on one feature (their colour), while the objects were meaningful multi-featural concepts. In addition, the contrast of 0-back and 1-back conditions allowed us to investigate the effect of stimulus-independent processing (1 back > 0 back).

### Procedure

In the scanner, participants completed a total of four functional runs (average run time 8 min 32 s). Within each run, there were two blocks related to each of the 4 conditions (Object 1-back; Object 0-back; Colour 1-back; Colour 0-back). Each block began with written instructions stating the task type (0-back or 1-back). Blocks consisted of observing pairs of items (1000 ms); each pair was separated by a jittered inter-stimulus interval (ISI; 3000–5000 ms) in which a fixation cross was presented. At random intervals (4–8 trials), a third item was presented in the centre of the screen and participants were asked to indicate the location of one of the pair (left or right) that was most similar to this probe (see Fig. 1). Participants were given 1500 ms to respond; once participants has made a response a fixation cross was presented for the remainder of this trial. This paradigm also required participants to match items that were present and compared this with items in memory. In the 0-back catch-trials participants had to decide which stimulus (left or right

of the screen) was most similar to this centrally-presented probe (i.e., all items were present on the screen). In the 1-back catch-trials, participants had to decide which stimulus (left or right of the screen) had been most similar to this centrally-presented probe on the previous trial (i.e., the critical stimulus was absent). Blocks consisted of 5 probes in total and lasted on average 64 s. The colour condition is considered ‘perceptual’ reasoning, as it requires participants to indicate which square was perceptually most similar to the centre item. Simply retrieving their conceptual name (e.g., blue) is not always useful, as some trials will have varying shades of blue. In contrast, the object condition is considered ‘conceptual’ reasoning, as it requires participants to indicate which objects was conceptually most similar to the centre item. Simply retrieving their perceptual properties is not always useful as the probe item may be perceptually similar (e.g., all round fruits) but differ conceptually (e.g., apple not orange, see Fig. 1 for illustration).

### MRI acquisition

Data for both experiments were acquired using a GE 3 T HD Excite MRI scanner at the York Neuroimaging Centre. A Magnex eight-channel phased array head coil was used in conjunction with a birdcage, radio-frequency insert coil tuned to 127.4 MHz. A gradient-echo EPI sequence was used to collect data from 38 bottom-up axial slices aligned with the temporal lobe (TR = 2s, TE = 18 ms, FOV = 192 × 192 mm, matrix size = 64 × 64, slice thickness = 3 mm, slice-gap = 1 mm, flip-angle = 90°). Voxel size was 3 × 3 × 3 mm. Functional images were co-registered onto a T1-weighted anatomical image from each participant (TR = 7.8s, TE = 3 ms, FOV = 290 × 290 mm, matrix size = 256 × 256 mm, voxel size = 1.13 × 1.13 × 1 mm) using linear registration.

### Pre-processing

All imaging data were pre-processed using a standard pipeline and analysed via FMRIB Software Library (FSL Version 6.0). Images were skull-stripped using a brain extraction tool [BET (Smith, 2002)]. The first five volumes (10s) of each scan were removed to minimize the effects of magnetic saturation, and slice-timing correction with Fourier space time-series phase-shifting was applied. Motion correction (MCFLIRT (Jenkinson et al., 2002)) was followed by temporal high-pass filtering (cut-off = 0.01 Hz). Individual participant data was registered to their high-resolution T1-anatomical image, and then into a standard space (Montreal Neurological Institute); this process included tri-linear interpolation of voxel sizes to 2 × 2 × 2 mm. For univariate analyses, data were additionally smoothed (Gaussian full width half maximum 6 mm).

The resting state functional data used were pre-processed and analysed using the FMRI Expert Analysis Tool (FEAT). The individual subject analysis involved: motion correction using MCFLIRT; slice-timing correction using Fourier space time-series phase-shifting; spatial smoothing using a Gaussian kernel of FWHM 6 mm; grand-mean intensity normalisation of the entire 4D dataset by a single multiplicative factor; high-pass temporal filtering (Gaussian-weighted least-squares straight line fitting, with sigma = 100 s); Gaussian low-pass temporal filtering, with sigma = 2.8s.

### Task based fMRI

For our task-based analysis, the time points of interest were the probe trials where participants had to make a decision about something present (0-back) or absent (1-back) from the screen. We therefore used a box-car regressor to model the probe trial for each condition and another one to model the entire block. Modelling the entire block ensured any effect detected from our analysis can be attributed to the probe itself and not the general effect of the block. Box-car regressors for each probe/block, for each condition, for each run, were convolved with a double gamma hemodynamic response function. Regressors of no interest were included

to account for head motion. We computed four contrasts: (1) 0-back > 1-back, (2) 1-back > 0-back, (3) Object > Colour and (4) Colour > Object. A fixed effect design (FLAME, <http://www.fmrib.ox.ac.uk/fsl>) was conducted to average the four runs, within each individual. Individual participant data were then entered into a higher-level group analysis using a mixed effects design (FLAME, <http://www.fmrib.ox.ac.uk/fsl>) whole-brain analysis. Finally, our analysis focused on a conjunction of 1-back > 0-back and Object > Colour to identify regions engaged in both stimulus independent processing and conceptually abstract representations. All whole brain analyses were cluster corrected using a z-statistic threshold of 3.1 to define contiguous clusters. Multiple comparisons were controlled using Gaussian Random Field Theory at a threshold of  $p < .05$  (Eklund et al., 2016). All statistical maps produced in these analyses are freely available at Neurosynth at the following URL: <http://neurovault.org/collections/2296/>.

### Resting-state fMRI

We extracted the time series from regions identified by univariate analysis and used these as explanatory variables in a connectivity analyses at the single subject level. Specifically, we took the conjunction map of 1 back > 0 back and Object > Colour as a seed map for a single resting-state analysis (this included bilateral AG and lateral MTG). In this analysis, we entered 11 nuisance regressors; the top five principal components extracted from white matter (WM) and cerebrospinal fluid (CSF) masks based on the CompCor method (Behzadi et al., 2007), six head motion parameters and spatial smoothing (Gaussian) was applied at 6 mm (FWHM). WM and CSF masks were generated from each individual's structural image (Zhang et al., 2001). No global signal regression was performed, following the method implemented in Murphy et al. (2009). Analyses were cluster corrected using a z-statistic threshold of 3.1 to define contiguous clusters. Multiple comparisons were controlled using Gaussian Random Field Theory at a threshold of  $p < .05$  (Eklund et al., 2016). All statistical maps produced in these analyses are freely available at Neurosynth at the following URL: <http://neurovault.org/collections/2296/>.

## Results

Table 1 presents behavioural performance, in the form of response efficiency (RT/ACC), for each of the four conditions of our task (see Supplementary Table 1 for separate accuracy and RT data). Response efficiency controls for speed-accuracy trade-offs. These data were compared using a 2 (task; 0-back vs. 1-back) by 2 (condition; object vs. colour) repeated-measures analysis of variance (ANOVA). There was no significant differences between stimulus type ( $F(1,28) = 2.55, p = .116$ ) but a significant main effect of task ( $F(1,28) = 15.38, p < .001$ ). There was no significant interaction ( $p > .05$ ). These analyses demonstrate that performance on the 1-back task was less efficient than for the 0-back task but that object and colour conditions were well matched in terms of overall task difficulty.

We next generated statistical maps describing patterns of neural activity at the moments when participants responded in each of our four conditions. These maps were compared at the group level using a GLM.

**Table 1**  
Behavioural results.

| Condition     | Response Efficiency |     |
|---------------|---------------------|-----|
|               | Mean                | SE  |
| Colour 1-back | 1028                | 206 |
| Colour 0-back | 829                 | 287 |
| Object 1-back | 1041                | 229 |
| Object 0-back | 841                 | 295 |

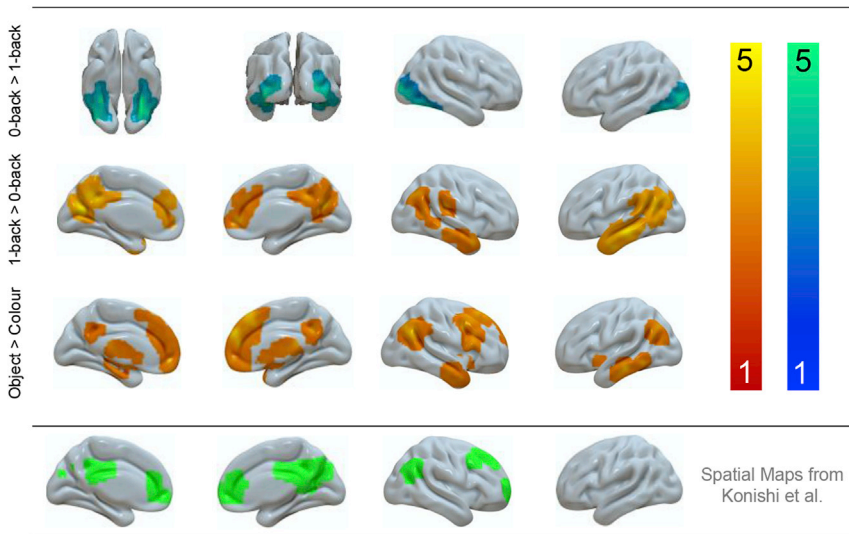
Footnote: SE = standard error. Response efficiency = reaction time in milliseconds/percent accuracy.

The contrast of 0-back > 1-back decisions captures perceptually-guided decision-making, revealing increased activity in the bilateral ventral visual stream, from occipital pole through to posterior fusiform cortex (presented in cool colours in the upper panel of Fig. 2). These regions have a well-documented role in online visual processing. The contrast of 1-back > 0-back reflects stimulus independence in decision-making. This comparison revealed greater activation in bilateral angular gyrus and anterior temporal lobes, as well as medial structures in the posterior cingulate cortex and medial prefrontal cortex (these are presented in warm colours in the middle panel of Fig. 2). Many of these regions fall within the DMN (58.44% of voxels fell within the DMN as defined by Yeo et al., 2011) and are spatially similar to the 'general recollection network' proposed by Rugg and Vilberg (2013). The comparison of Objects > Colours identifies brain areas that support the processing of multi-featural conceptual representations. These are presented in warm colours in the lower panel in Fig. 2. This contrast revealed a similar set of regions to the stimulus independence contrast (medial pre frontal cortex, left and right angular gyrus and anterior temporal lobe) with the addition of the right dorsolateral cortex (52.49% of voxels fell within the DMN as defined by Yeo et al., 2011). The contrast of Colours > Objects yielded no significant whole-brain corrected results. All results are summarised in Supplementary Table 2). To allow comparison with previous research, the spatial maps for the contrast of 1-back > 0-back from Konishi and colleagues are also displayed: similarities can be seen in posterior cingulate cortex, medial prefrontal cortex, right angular gyrus and dorsolateral cortex.

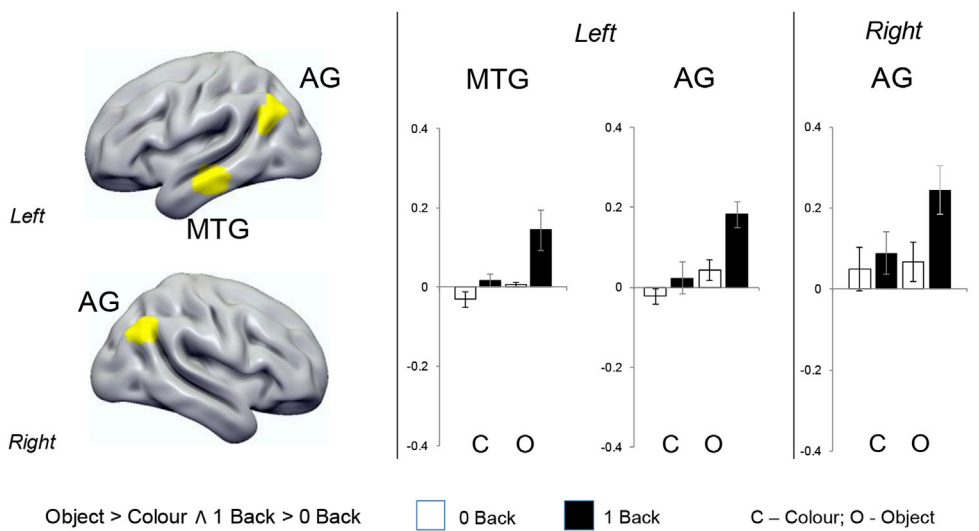
We also conducted a supplementary analysis contrasting Object and Colour decisions separately in the 1-back and 0-back conditions to confirm regions important for stimulus-independent decisions (see Supplementary Fig. 1). This analysis showed that 1-back trials involving meaningful objects activated regions including angular gyrus, middle temporal gyrus and right dorsolateral prefrontal regions more than colours. In contrast, the comparison of Objects > Colours in the 0-back condition only revealed greater activity in fusiform cortex.

Our next analysis formally identifies regions that show a response to both stimulus independence and memory complexity. Fig. 3 shows the results of a formal conjunction of the contrasts of Object > Colour and 1-back > 0-back, revealing three regions – bilateral angular gyrus and lateral medial temporal gyrus in the left hemisphere. The left hand panel of Fig. 3 summarizes the parameter estimates from each of these regions in each condition of our task. In every case the strongest response was when decisions were made in the Object 1-back condition. A repeated-measures ANOVA with ROI (3; left MTG, left AG and right AG) and condition (4; Colour 0-back, Colour 1-back, Object 0-back, Object 1-back) as factors revealed a main effect of condition ( $F(3,84) = 16.68, p < .001$ ). No significant main effect for ROI was identified ( $F(2,56) = 2.07, p = .14$ ), nor the interaction between ROI and condition ( $F(6, 168) = 0.27, p = .95$ ). Post-hoc analyses in the form of three independent 2 (task; 0back, 1back) x 2 (condition; colour, object) repeated-measure ANOVAs for each ROI revealed a significant main effect of both task and condition for all three sites ( $p < .001$ ) however, a significant interaction between task and condition was not observed (left MTG,  $p = .06$ ; left AG,  $p = .19$ ; right AG,  $p = .16$ ). Importantly, although these regions fell within the DMN (88.07% of voxels within the conjunction mask fell within the DMN as defined by Yeo et al., 2011), their response profile indicated greater responding during a demanding condition (i.e. Object 1-back) ruling out a task-negative interpretation of these results.

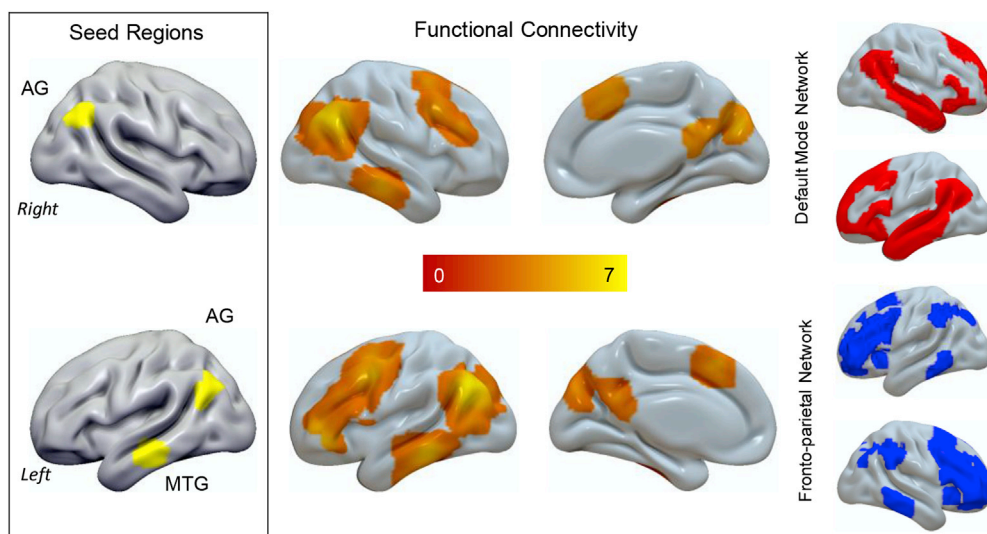
To provide a better understanding of the neural architecture in which these systems are embedded we also explored the intrinsic architecture of conjunction regions responding to Object > Colour and 1-back > 0-back in an independent resting-state data set. The results of this analysis are presented in Fig. 4 and reveal coupling beyond the seed regions to the posterior cingulate cortex, dorsolateral prefrontal cortex and pre-supplementary motor area bilaterally. Some of these regions fall outside the DMN, as defined by Yeo and colleagues, and instead are members of the frontoparietal network linked with cognitive control



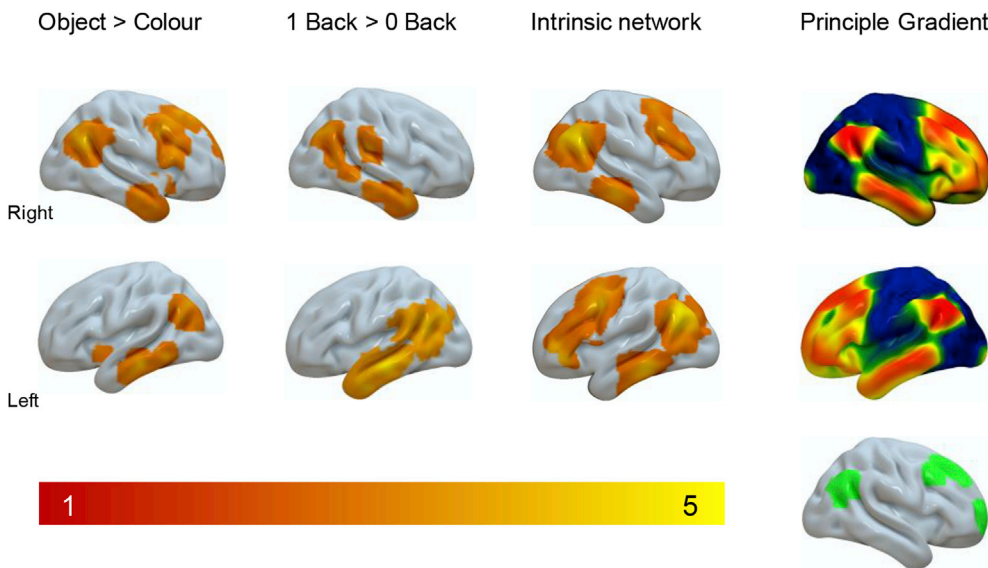
**Fig. 2.** Neural activity produced when making decisions based on meaningful objects and when decisions are made from memory. (a) Activity elicited when decisions were made based using information from perception (b) Activity when decisions were made on the basis of information from memory and (c) when information from memory was more complex. Spatial maps were cluster corrected at  $Z=3.1$  FWE. The contrast of Colours > Objects yielded no significant whole-brain corrected results. To allow comparison with previous research, the spatial maps for the contrast of 1-back > 0-back from Konishi et al. (2015) are also displayed in the grey panel: similarities can be seen in posterior cingulate cortex, medial prefrontal cortex, right angular gyrus and dorsolateral cortex.



**Fig. 3.** Locating peak activity during stimulus independent decisions regarding complex objects. (a) A conjunction of the neural activity when making decisions based on meaningful categories and when decisions are made in the absence of perceptual input revealed three regions: bilateral angular gyrus and in the left middle temporal gyrus. (b) Percent signal extracted from these regions confirmed an additive effect (i.e. these regions responded significantly more to the object condition when information was not present on the screen compared to all other conditions). The conjunction analysis was based on whole-brain cluster corrected spatial maps from Fig. 2. Error bars indicated 95% confidence intervals.



**Fig. 4.** Peak areas during stimulus independent decision regarding complex stimuli at rest are coupled to regions of the default mode network (DMN) and the fronto-parietal network (FPN). These regions show functional connectivity at rest with both the pre-supplementary cortex and the dorso-lateral pre-frontal cortex. Although the regions identified in our conjunction analysis fall within the DMN they show functional communication with regions in the FPN, including the right dorso-lateral prefrontal cortex. The spatial networks in the grey panel are from the decomposition of Yeo and colleagues.



**Fig. 5.** Regions activated during stimulus independent decisions regarding complex stimuli form localized clusters in transmodal cortex. Regions in the main panel reflect data generated in this experiment. The grey sub panel presents the spatial distribution of the principle gradient from Margulies et al. (2016) coloured blue-red, and the cluster corrected map from Konishi et al. (2015) coloured green.

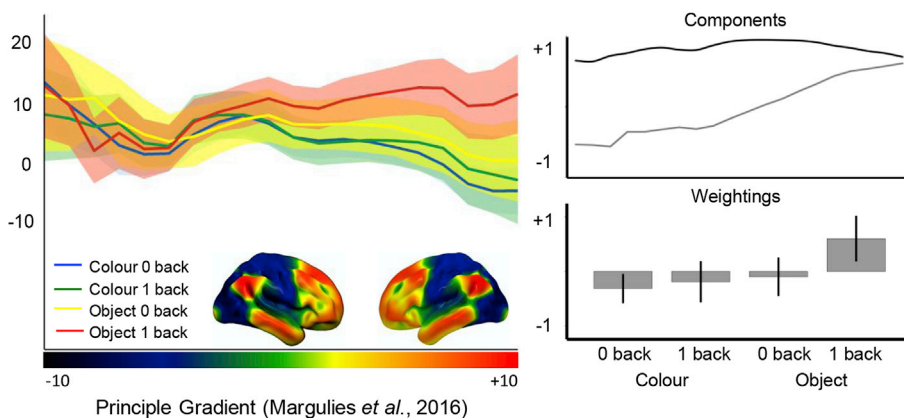
(Yeo et al., 2011).

Together these analyses highlight a network of regions that are important when spatial decisions are made in the absence of external sensory support, and when they involve multi-feature concepts (Fig. 5). Common regions responding to the two task contrasts (1-back > 0-back; Object > Colour), include angular gyrus and middle temporal gyrus. In the right hemisphere, two of the three maps also include the right dorsolateral cortex. All of these right hemisphere regions responded to a similar 1-back > 0-back contrast involving abstract shapes (circle, triangle, square) in the study by Konishi et al. (2015). Furthermore, in Fig. 5, we summarise the spatial maps produced by this experiment and present these alongside the principal gradient from Margulies et al. (2016), which describes a functional spectrum of intrinsic connectivity across the cortical surface, extending from primary sensory motor systems to regions of the DMN at the other extreme. More similar colours on this gradient reflect greater similarity in connectivity. It can be seen that common regions implicated in stimulus-independent and conceptual processing are all localized towards the transmodal end of the principal gradient.

Finally, given the similarity between the neural patterns captured by our task and the spatial distribution of the principle gradient from Margulies et al. (2016), we examined whether observed patterns of neural activity reflect a shift in cortical activity at the whole-brain level, as would be expected based on the gradient view of cortical organization. This analysis tests the explanatory power of the principal gradient in accounting for differences between our experimental conditions: we

might expect a gradually-increasing response in regions with higher gradient values across the whole cortical surface for tasks relevant to the principal gradient, even though these regions of cortex are highly distributed. The gradient bins were calculated in the same manner as outlined in Margulies et al. (2016). The original gradient map labeled each voxel in the brain between 0 and 100 relating to where it fell on the gradient (0 = unimodal end; 100 = DMN end). This map was then divided into five-percentile bins (all voxels with the value 0–5 were assigned to bin1; 6–10 = bin 2 etc); yielding 20 bins in total. Next for each participant we calculated the average signal in each bin for each condition of our task. The left hand panel in Fig. 6 presents these data plotted across the principle gradient separately for each condition; the shaded bars represent the 95% confidence intervals. It can be seen that the conditions are most distinct towards the transmodal end, with the highest values when participants made judgments about objects from memory. To quantify these patterns, we compared their distribution using a 2 (stimulus independence) X (stimulus complexity) X 20 (Gradient Bin) ANOVA. This revealed a significant 3-way interaction [F (19, 532) = 5.136, p < .001].

To follow up this interaction, we performed a principle components analysis (PCA) on the condition level data, describing the dynamics captured in the left hand panel of Fig. 6. This allows us to determine the underlying trends within our data and compare their loadings are conditions (see Smallwood et al., 2012 for a previous use of this approach). The results revealed two components with eigenvalues greater than 1 accounting for over 86% of the variance (component 1 = 70.49%;



**Fig. 6.** Stimulus independent decisions regarding meaningful objects leads to a whole-brain shift towards the transmodal-end of the gradient. (a) A regions-of-interest analysis using bins of the principal gradient revealed that the decisions that are made on objects rather than colours when these stimuli are not available to perception led to higher activity towards the transmodal-end of the principal gradient. (b) Decomposition using PCA revealed that this difference was related to a gradual shift in the locus of neural activity away from regions on the principal gradient related to perception and action and towards transmodal regions of cortex. Error bars indicated 95% confidence interval.

component 2 = 15.73%) across the principal gradient bins. The first two components are presented in the right hand panel of Fig. 6. The second component describes a gradual transition showing increasing levels of BOLD activity from the unimodal end of the gradient towards the transmodal end. Projecting the values from component 2 back onto the task conditions, and averaging them at the group-level, revealed that this pattern of variance loaded almost exclusively on the ‘object’ 1-back condition. There was a significant positive fit between the spatial map of the principle gradient and recruitment in the Object 1-Back task, but not other conditions.

## Discussion

Our experiment contrasted judgments when stimuli to be decided upon were present in the current trial (stimulus-dependent 0-back decisions) with identical decisions where the information was from the previous trial (stimulus-independent 1-back decisions, see Fig. 1). We also varied whether decisions were made on uni-dimensional stimuli (colour patches) or more complex multi-dimensional stimuli (objects in conceptual categories). In each task, the items to be matched were not perceptually identical: participants selected the closest hue or the closest concept from similar distractors. This allowed us to identify regions that capture cognitive processes important for representing (i) information that is decoupled from stimulus input, (ii) representations that are complex and multi-dimensional in nature and (iii) a combination of both.

Using conventional whole brain analyses we identified overlapping regions in the DMN that are sensitive to both perceptual decoupling (i.e., the requirement to make decisions based on memory, as opposed to the immediate environment) and when these decisions regarded more complex conceptual categories of stimuli (i.e., decisions based on objects rather than colours). We also used a novel analytic approach to demonstrate that these isolated clusters of activity can be seen as part of a whole brain shift in the locus of neural activity towards the extreme end of a gradient from unimodal to heteromodal cortex (Margulies et al., 2016). These findings have broad implications for the role of DMN in cognition, and also contribute to our understanding of specific DMN regions, particularly angular gyrus and lateral temporal lobe. We first consider the results in terms of their implications for functional accounts of these regions. Secondly, we consider the macroscale organization of the cortex, focusing on approaches which can explain the functional similarity of these distributed clusters and their relative position on the cortical surface.

### *Functional implications for the angular gyri*

There were stronger responses in left and right angular gyri, as well as in left middle temporal gyrus, when conceptual decisions were based on information that was no longer present in the environment. These findings are inconsistent with several existing accounts of the contribution of angular gyrus to memory and semantic cognition. First, they do not easily align with the proposal that specific aspects of meaning are represented in angular gyrus – namely thematic associations, but not item identity (Davey et al., 2015; Schwartz et al., 2011). Our conceptual task involved matching items on the basis of their identity, yet it robustly activated this region. Second, the findings are at odds with the proposal that the angular gyri only activate during contrasts of easier versus harder tasks, and for “automatic” and not “controlled” patterns of retrieval (Humphreys and Lambon Ralph, 2014; Humphreys et al., 2015). The 1-back condition was harder than the 0-back condition and still elicited a greater response.

Instead, our findings are consistent with suggestions that the role of the angular gyri is to allocate attention to complex memory representations. The angular gyri show a stronger response to a range of memory retrieval situations in which the retrieved representations are detailed, specific or precise (Binder et al., 2005; Bonnici et al., 2016; Davey et al., 2015; Price et al., 2015). In our study, the 1-back trials required attention

to switch from an encoding mode, to a retrieval mode when task relevant information is represented internally. This pattern of responding in the angular gyrus is consistent with the purported role of inferior parietal cortex in focusing attention on memory (Cabeza et al., 2011). Our study suggests that when stimuli were matched on colour the angular gyri did not activate to the same extent, suggesting that they are especially important when information from memory must be evaluated on a number of dimensions.

### *Functional implications for temporal cortex*

Angular gyrus shows strong intrinsic connectivity with ventral anterior temporal cortex (Davey et al., 2016; Jackson et al., 2016), which is proposed to support the integration of multiple features and modalities to capture ‘deep’ conceptual similarities between items with diverse ‘surface’ features (e.g., items such as PINEAPPLE and KIWI that have different colours, sizes, shapes, phonology etc.; for a review see Lambon (Ralph et al., 2017). Semantic dementia patients with atrophy focused on this region show highly consistent degradation of conceptual knowledge across tasks (Bozeat et al., 2000; Jefferies and Lambon Ralph, 2006), while neuroimaging studies of healthy participants localize the response during heteromodal conceptual processing to ventral anterior temporal lobes and anterior middle temporal gyrus (Murphy et al., 2017; Visser & Lambon Ralph, 2011). Word meaning can be decoded within anterior middle and inferior temporal gyri, while patterns of activation in superior temporal gyrus instead reflect the presentation format (Murphy et al., 2017).

The ventral anterior temporal lobes are thought to provide a “graded hub” in which different unimodal features are gradually integrated to form heteromodal concepts, with visual information reaching this region along the ventral visual pathway (fusiform cortex), auditory and motor information arriving from superior temporal gyrus and frontal cortex, and social/emotional information merging from the temporal pole (Ralph et al., 2017). Nevertheless, the peak response in the anterior temporal lobes in the current study was in lateral MTG, and not in the site of the putative hub in ventral anterior temporal cortex (Murphy et al., 2017). Visser et al. (2012) observed evidence compatible with two gradients of information convergence in the temporal lobes: first, there is a posterior-to-anterior axis: posterior temporal lobe regions proximal to visual and auditory cortex show largely unimodal responses, while more anterior regions integrate across these types of input to support heteromodal conceptual processing. Secondly, there may be integration from superior and inferior regions, implicated in auditory and visual processing respectively: towards middle temporal gyrus response become more heteromodal response along the length of the temporal cortex. The site we observed in the conjunction of semantic and perceptually-decoupled decisions in the current study corresponds to the extreme heteromodal end of both of these temporal lobe gradients.

### *Implications for the default mode network*

We replicated prior demonstrations that transmodal regions in the DMN are engaged when participants make decisions that rely on information from memory rather than input from perception, even though the 1-back task was more difficult than the 0-back task (Konishi et al., 2015). This pattern of task-positive behaviour adds to a growing body of evidence that the DMN contributes in an active manner to demanding external cognitive tasks (Konishi et al., 2015; Krieger-Redwood et al., 2016; Spreng et al., 2014, 2015, 2010; Vatansever et al., 2015). The contribution of DMN to controlled cognitive states appears to reflect situations in which DMN regions work in tandem with the frontoparietal network. Prior work has established the combination of these networks is important for tasks including controlled semantic retrieval (Krieger-Redwood et al., 2016), working memory (Vatansever et al., 2015), autobiographical planning (Spreng et al., 2014, 2015), retrieving memories of close personal friends (de Caso et al., 2017) and the control of



spontaneous thoughts in a deliberate manner (Golchert et al., 2017). Our study shows that right angular gyrus, within the DMN, and right dorso-lateral prefrontal cortex, a member of the frontoparietal network, activate together when participants make judgments about meaningful objects from memory rather than colours (see Supplementary Fig. 1). Our functional connectivity analysis also demonstrates that these regions are correlated at rest, suggesting they form an intrinsic network. The right dorsolateral cluster replicates the spatial distribution observed from the prior study by Konishi et al., (2015). and overlaps with a region of greater grey matter associated with more deliberate mind-wandering (Golchert et al., 2017). Both 1-back retrieval in our paradigm, and more deliberate spontaneous thought, require memory retrieval to be shaped in a goal-directed fashion. It is possible that a range of states requiring the goal-directed control of memory depend on co-operation between these two large-scale networks.

At the most general level our study supports the hypothesis that the capacity for complex memory representations to influence cognition emerges from the topographical arrangement of neural processes across the cortex. Prior work highlighted regions of transmodal cortex, such as the default mode network, as having the greatest distance from uni-modal sensori-motor cortex in both functional and structural space (Margulies et al., 2016). Our finding builds on this observation by showing an association between ongoing neural activity and this dimension of connectivity under situations when the demands placed on cognition require a combination of memory complexity and stimulus independency. Using both standard and novel methods of analysis, we demonstrated that the neural activity associated with this type of activity is prevalent in transmodal regions (Fig. 5) and can be represented as a whole brain shift in the balance of neural activity, away from sensori-motor regions cortex and towards the transmodal end of the gradient (Fig. 6). This topographical shift in the distribution of neural processing is consistent with theoretical accounts that assume that more abstract cortical functions are facilitated through functional isolation from incoming input (Buckner and Krienen, 2013; Margulies et al., 2016; Mesulam, 1998; Smallwood, 2013). Consistent with this interpretation of DMN function, a recent study found that strong connectivity within the DMN (including an overlapping region of left temporal cortex) was linked to poor performance on tasks which depend on encoding information from the environment but not for those that depended on retrieving information from memory (Poerio et al., 2017). The findings of Poerio and colleagues, in combination with those from the current study, provide converging evidence that regions of the DMN support a state where cognition is guided by memory rather than input, regardless of whether it is beneficial to the task or not.

There are a number of limitations that should be borne in mind when considering the results of this study. First, our comparison of semantic and colour decisions allowed us to demonstrate a neural pattern associating conceptual processing with stimulus independency. This comparison is too crude a manipulation to determine which aspects of the semantic judgements gave rise to this response in the DMN; for example, is it the richness of concepts such as Labrador or apple, their heteromodal nature or the fact that they are acquired over a lifetime, which dissociates them from colours? Future studies could probe different features of retrieval, such as whether the target is a concrete or abstract concept, whether it has to be identified at a specific or superordinate level, and whether there are differences according to the modality of the representation being probed. Second, the nature of our design precludes the ability to separate different aspects of memory retrieval engaged during 1-back decisions. In our paradigm, these decisions require both the integration of appropriate information from memory, as well as the inhibition of the memory representation for the non-probed item. Interestingly, studies have implicated dorso-lateral prefrontal cortex in the suppression of memories (Anderson et al., 2004) whereas the angular gyrus has been linked to the integration of appropriate semantic features (Wagner et al., 2015) and the retrieval of specific information (Davey et

al., 2015). It is possible that the angular gyrus and dorso-lateral prefrontal region are performing distinct roles in integration of relevant associations and suppression of irrelevant information during retrieval in our paradigm. Future work could address this question by manipulating the level of featural overlap between target and probe during retrieval in a similar paradigm as in this experiment. Finally, our study compares the retrieval of information upon which a decision must be made, with situations in which participants must encode information from the environment in order to make a similar decision. This allows the exploration of the processes concerned with retrieving information, since there are no task stimuli in the environment upon which this decision can be made. In many of the situations when the default mode network may activate, such as mind-wandering in the real world, it may support cognition that is incongruent with events in the environment (such as when we mind wander about a personal problem while we mindlessly read text, Schooler, 2002). It may be useful in the future to explore how effectively participants can retrieve information from memory when they are presented with information in the environment that is incongruous with the decision that needs to be made.

## Funding

The research was supported by BBSRC grant BB/J006963/1. EJ was supported by a grant from the European Research Council (SEMBIND - 283530). JS was supported by a grant from the European Research Council (Wandering Minds – 303701).

## Appendix A. Supplementary data

Supplementary data related to this article can be found at <https://doi.org/10.1016/j.neuroimage.2018.01.017>.

## References

- Anderson, M.C., Ochsner, K.N., Kuhl, B., Cooper, J., Robertson, E., Gabrieli, S.W., Gabrieli, J.D., et al., 2004. Neural systems underlying the suppression of unwanted memories. *Science* 303 (5655), 232–235. <https://doi.org/10.1126/science.1089504>.
- Behzadi, Y., Restom, K., Liu, J., Liu, T.T., 2007. A component based noise correction method (CompCor) for BOLD and perfusion based fMRI. *Neuroimage* 37 (1), 90–101. <https://doi.org/10.1016/j.neuroimage.2007.04.042>.
- Benedek, M., Jauk, E., Beaty, R.E., Fink, A., Koschutnig, K., Neubauer, A.C., 2016. Brain mechanisms associated with internally directed attention and self-generated thought. *Sci. Rep.* 6.
- Binder, J.R., Desai, R.H., 2011. The neurobiology of semantic memory. *Trends in Cognit. Sci.* 15 (11), 527–536.
- Binder, J.R., Westbury, C.F., McKiernan, K.A., Possing, E.T., Medler, D.A., 2005. Distinct brain systems for processing concrete and abstract concepts. *J. Cognit. Neurosci.* 17 (6), 905–917.
- Binder, J.R., Desai, R.H., Graves, W.W., Conant, L.L., 2009. Where is the semantic system? A critical review and meta-analysis of 120 functional neuroimaging studies. *Cerebr. Cortex* 19 (12), 2767–2796. <https://doi.org/10.1093/cercor/bhp055>.
- Bonner, M.F., Peelle, J.E., Cook, P.A., Grossman, M., 2013. Heteromodal conceptual processing in the angular gyrus. *Neuroimage* 71, 175–186.
- Bonnici, H.M., Richter, F.R., Yazar, Y., Simons, J.S., 2016. Multimodal feature integration in the angular gyrus during episodic and semantic retrieval. *J. Neurosci.* 36 (20), 5462–5471. <https://doi.org/10.1523/JNEUROSCI.4310-15.2016>.
- Bozeat, S., Lambon Ralph, M.A., Patterson, K., Garrard, P., Hodges, J.R., 2000. Non-verbal semantic impairment in semantic dementia. *Neuropsychologia* 38 (9), 1207–1215.
- Buckner, R.L., Krienen, F.M., 2013. The evolution of distributed association networks in the human brain. *Trends Cognit. Sci.* 17 (12), 648–665. <https://doi.org/10.1016/j.tics.2013.09.017>.
- Cabeza, R., Mazuz, Y.S., Stokes, J., Kragel, J.E., Woldorff, M.G., Ciaramelli, E., Moscovitch, M., et al., 2011. Overlapping parietal activity in memory and perception: evidence for the attention to memory model. *J. Cognit. Neurosci.* 23 (11), 3209–3217. [https://doi.org/10.1162/jocn\\_a.00065](https://doi.org/10.1162/jocn_a.00065).
- Davey, J., Cornelissen, P.L., Thompson, H.E., Sonkusare, S., Hallam, G., Smallwood, J., Jefferies, E., 2015. Automatic and controlled semantic retrieval: TMS reveals distinct contributions of posterior middle temporal gyrus and angular gyrus. *J. Neurosci.* 35 (46), 15230–15239. <https://doi.org/10.1523/JNEUROSCI.4705-14.2015>.
- Davey, J., Thompson, H.E., Hallam, G., Karapanagiotidis, T., Murphy, C., De Caso, I., Jefferies, E., 2016. Exploring the role of the posterior middle temporal gyrus in semantic cognition: Integration of anterior temporal lobe with executive processes. *NeuroImage* 137, 165–177.
- de Caso, I., Karapanagiotidis, T., Aggus-Vella, E., Konishi, M., Margulies, D.S., Jefferies, E., Smallwood, J., 2017. Knowing me, knowing you: resting-state functional connectivity of ventromedial prefrontal cortex dissociates memory related to self

- from a familiar other. *Brain Cognit.* 113, 65–75. <https://doi.org/10.1016/j.bandc.2017.01.004>.
- Eklund, A., Nichols, T.E., Knutsson, H., 2016. Cluster failure: why fMRI inferences for spatial extent have inflated false-positive rates. *Proc. Natl. Acad. Sci. Unit. States Am.* 201602413
- Engen, H.G., Kanske, P., Singer, T., 2017. The neural component-process architecture of endogenously generated emotion. *Soc. Cognit. Affect. Neurosci.* 12 (2), 197–211. <https://doi.org/10.1093/scan/nsw108>.
- Gardner, H.E., Lambon Ralph, M.A., Dodds, N., Jones, T., Ehsan, S., Jefferies, E., 2012. The differential contributions of pFC and temporo-parietal cortex to multimodal semantic control: exploring refractory effects in semantic aphasia. *J. Cognit. Neurosci.* 24 (4), 778–793.
- Golchert, J., Smallwood, J., Jefferies, E., Seli, P., Huntenburg, J.M., Liem, F., Margulies, D.S., et al., 2017. Individual variation in intentionality in the mind-wandering state is reflected in the integration of the default-mode, fronto-parietal, and limbic networks. *Neuroimage* 146, 226–235. <https://doi.org/10.1016/j.neuroimage.2016.11.025>.
- Gusnard, D.A., Akbudak, E., Shulman, G.L., Raichle, M.E., 2001. Medial prefrontal cortex and self-referential mental activity: relation to a default mode of brain function. *Proc. Natl. Acad. Sci. U. S. A.* 98 (7), 4259–4264. <https://doi.org/10.1073/pnas.071043098>.
- Humphreys, G.F., Lambon Ralph, M.A., 2014. Fusion and fission of cognitive functions in the human parietal cortex. *Cerebr. Cortex* 25 (10), 3547–3560.
- Humphreys, G.F., Hoffman, P., Visser, M., Binney, R.J., Lambon Ralph, M.A., 2015. Establishing task- and modality-dependent dissociations between the semantic and default mode networks. *Proc. Natl. Acad. Sci.* 112 (25), 7857–7862.
- Jackson, R.L., Hoffman, P., Pobric, G., Lambon Ralph, M.A., 2016. The semantic network at work and rest: Differential connectivity of anterior temporal lobe subregions. *J. Neurosci.* 36 (5), 1490–1501.
- Jefferies, E., Lambon Ralph, M.A., 2006. Semantic impairment in stroke aphasia versus semantic dementia: a case-series comparison. *Brain* 129 (8), 2132–2147.
- Jenkinson, M., Bannister, P., Brady, M., Smith, S., 2002. Improved optimization for the robust and accurate linear registration and motion correction of brain images. *Neuroimage* 17 (2), 825–841.
- Konishi, M., McLaren, D.G., Engen, H., Smallwood, J., 2015. Shaped by the past: the default mode network supports cognition that is independent of immediate perceptual input. *PLoS One* 10 (6), e0132209. <https://doi.org/10.1371/journal.pone.0132209>.
- Krieger-Redwood, K., Jefferies, E., Karapanagiotidis, T., Seymour, R., Nunes, A., Ang, J.W., Smallwood, J., et al., 2016. Down but not out in posterior cingulate cortex: deactivation yet functional coupling with prefrontal cortex during demanding semantic cognition. *Neuroimage* 141, 366–377. <https://doi.org/10.1016/j.neuroimage.2016.07.060>.
- Leech, R., Braga, R., Sharp, D.J., 2012. Echoes of the brain within the posterior cingulate cortex. *J. Neurosci.* 32 (1), 215–222. <https://doi.org/10.1523/JNEUROSCI.3689-11.2012>.
- Leech, R., Sharp, D.J., 2014. The role of the posterior cingulate cortex in cognition and disease. *Brain* 137 (Pt 1), 12–32. <https://doi.org/10.1093/brain/awt162>.
- Margulies, D.S., Ghosh, S.S., Goulas, A., Falkiewicz, M., Huntenburg, J.M., Langs, G., Smallwood, J., et al., 2016. Situating the default-mode network along a principal gradient of macroscale cortical organization. *Proc. Natl. Acad. Sci. U. S. A.* 113 (44), 12574–12579. <https://doi.org/10.1073/pnas.1608282113>.
- Mesulam, M.M., 1998. From sensation to cognition. *Brain* 121 (Pt 6), 1013–1052.
- Moscovitch, M., Cabeza, R., Winocur, G., Nadel, L., 2016. Episodic memory and beyond: the Hippocampus and neocortex in transformation. *Annu. Rev. Psychol.* 67, 105–134. <https://doi.org/10.1146/annurev-psych-113011-143733>.
- Murphy, K., Birn, R.M., Handwerker, D.A., Jones, T.B., Bandettini, P.A., 2009. The impact of global signal regression on resting state correlations: are anti-correlated networks introduced? *Neuroimage* 44 (3), 893–905.
- Murphy, C., Rueschemeyer, S.A., Watson, D., Karapanagiotidis, T., Smallwood, J., Jefferies, E., 2017. Fractionating the anterior temporal lobe: MVPA reveals differential responses to input and conceptual modality. *NeuroImage* 147, 19–31.
- Patterson, K., Nestor, P.J., Rogers, T.T., 2007. Where do you know what you know? The representation of semantic knowledge in the human brain. *Nat. Rev. Neurosci.* 8 (12), 976–987.
- Poerio, G.L., Sormaz, M., Wang, H.T., Margulies, D., Jefferies, E., Smallwood, J., 2017. The role of the default mode network in component processes underlying the wandering mind. *Soc. Cognit. Affect. Neurosci.*, nsx041
- Price, A.R., Bonner, M.F., Peelle, J.E., Grossman, M., 2015. Converging evidence for the neuroanatomic basis of combinatorial semantics in the angular gyrus. *J. Neurosci.* 35 (7), 3276–3284.
- Ralph, M.A., Jefferies, E., Patterson, K., Rogers, T.T., 2017. The neural and computational bases of semantic cognition. *Nat. Rev. Neurosci.* 18 (1), 42–55. <https://doi.org/10.1038/nrn.2016.150>.
- Rugg, M.D., Vilberg, K.L., 2013. Brain networks underlying episodic memory retrieval. *Curr. Opin. Neurobiol.* 23 (2), 255–260. <https://doi.org/10.1016/j.conb.2012.11.005>.
- Schacter, D.L., Addis, D.R., 2007. The cognitive neuroscience of constructive memory: remembering the past and imagining the future. *Philos. Trans. R. Soc. Lond. B Biol. Sci.* 362 (1481), 773–786. <https://doi.org/10.1098/rstb.2007.2087>.
- Schooler, J.W., 2002. Re-representing consciousness: Dissociations between experience and meta-consciousness. *Trends Cognit. Sci.* 6 (8), 339–344.
- Schwartz, M.F., Kimberg, D.Y., Walker, G.M., Brecher, A., Faseyitan, O.K., Dell, G.S., Coslett, H.B., 2011. Neuroanatomical dissociation for taxonomic and thematic knowledge in the human brain. *Proc. Natl. Acad. Sci.* 108 (20), 8520–8524.
- Seghier, M.L., 2013. The angular gyrus: multiple functions and multiple subdivisions. *Neuroscientist* 19 (1), 43–61. <https://doi.org/10.1177/1073858412440596>.
- Smallwood, J., Brown, K.S., Baird, B., Mrazek, M.D., Franklin, M.S., Schooler, J.W., 2012. Insulation for daydreams: a role for tonic norepinephrine in the facilitation of internally guided thought. *PLoS One* 7 (4), e33706.
- Smallwood, J., 2013. Distinguishing how from why the mind wanders: a process-occurrence framework for self-generated mental activity. *Psychol. Bull.* 139 (3), 519–535. <https://doi.org/10.1037/a0030010>.
- Smith, S.M., 2002. Fast robust automated brain extraction. *Hum. Brain Mapp.* 17 (3), 143–155. <https://doi.org/10.1002/hbm.10062>.
- Spreng, R.N., 2012. The fallacy of a “task-negative” network. *Front. Psychol.* 3, 145. <https://doi.org/10.3389/fpsyg.2012.00145>.
- Spreng, R.N., DuPre, E., Selarka, D., Garcia, J., Gojkovic, S., Mildner, J., Turner, G.R., et al., 2014. Goal-congruent default network activity facilitates cognitive control. *J. Neurosci.* 34 (42), 14108–14114. <https://doi.org/10.1523/JNEUROSCI.2815-14.2014>.
- Spreng, R.N., Gerlach, K.D., Turner, G.R., Schacter, D.L., 2015. Autobiographical planning and the brain: activation and its modulation by qualitative features. *J. Cognit. Neurosci.* 27 (11), 2147–2157. [https://doi.org/10.1162/jocn\\_a.00846](https://doi.org/10.1162/jocn_a.00846).
- Spreng, R.N., Stevens, W.D., Chamberlain, J.P., Gilmore, A.W., Schacter, D.L., 2010. Default network activity, coupled with the frontoparietal control network, supports goal-directed cognition. *Neuroimage* 53 (1), 303–317. <https://doi.org/10.1016/j.neuroimage.2010.06.016>.
- Thompson, H.E., Robson, H., Lambon Ralph, M.A., Jefferies, E., 2015. Varieties of semantic ‘access’ deficit in Wernicke’s aphasia and semantic aphasia. *Brain* 138 (12), 3776–3792.
- Vatavsever, D., Menon, D.K., Manktelow, A.E., Sahakian, B.J., Stamatakis, E.A., 2015. Default mode network connectivity during task execution. *Neuroimage* 122, 96–104. <https://doi.org/10.1016/j.neuroimage.2015.07.053>.
- Visser, M., Lambon Ralph, M., 2011. Differential contributions of bilateral ventral anterior temporal lobe and left anterior superior temporal gyrus to semantic processes. *J. Cognit. Neurosci.* 23 (10), 3121–3131.
- Visser, M., Jefferies, E., Lambon Ralph, M.A., 2010. Semantic processing in the anterior temporal lobes: a meta-analysis of the functional neuroimaging literature. *J. Cognit. Neurosci.* 22 (6), 1083–1094. <https://doi.org/10.1162/jocn.2009.21309>.
- Visser, M., Jefferies, E., Embleton, K.V., Lambon Ralph, M.A., 2012. Both the middle temporal gyrus and the ventral anterior temporal area are crucial for multimodal semantic processing: distortion-corrected fMRI evidence for a double gradient of information convergence in the temporal lobes. *J. Cognit. Neurosci.* 24 (8), 1766–1778.
- Wagner, I.C., van Buuren, M., Kroes, M.C., Gutteling, T.P., van der Linden, M., Morris, R.G., Fernandez, G., 2015. Schematic memory components converge within angular gyrus during retrieval. *Elife* 4, e09668. <https://doi.org/10.7554/eLife.09668>.
- Yeo, B.T., Krienen, F.M., Sepulcre, J., Sabuncu, M.R., Lashkari, D., Hollinshead, M., Buckner, R.L., et al., 2011. The organization of the human cerebral cortex estimated by intrinsic functional connectivity. *J. Neurophysiol.* 106 (3), 1125–1165. <https://doi.org/10.1152/jn.00338.2011>.
- Zhang, Y., Brady, M., Smith, S., 2001. Segmentation of brain MR images through a hidden markov random field model and the expectation-maximization algorithm. *IEEE Trans. Med. Imag.* 20 (1), 45–57.