



UNIVERSITY OF LEEDS

This is a repository copy of *Transferability of Car-Following Models Between Driving Simulator and Field Traffic*.

White Rose Research Online URL for this paper:
<http://eprints.whiterose.ac.uk/112209/>

Version: Accepted Version

Article:

Papadimitriou, S and Choudhury, CF orcid.org/0000-0002-8886-8976 (2017)
Transferability of Car-Following Models Between Driving Simulator and Field Traffic.
Transportation Research Record, 2623. pp. 60-72. ISSN 0361-1981

<https://doi.org/10.3141/2623-07>

This is an author produced version of a paper published in *Transportation Research Record: Journal of the Transportation Research Board*. In order to comply with the publisher requirements the University does not require the author to sign a non-exclusive licence for this paper. Uploaded in accordance with the publisher's self-archiving policy.

Reuse

Items deposited in White Rose Research Online are protected by copyright, with all rights reserved unless indicated otherwise. They may be downloaded and/or printed for private study, or other acts as permitted by national copyright laws. The publisher or other rights holders may allow further reproduction and re-use of the full text version. This is indicated by the licence information on the White Rose Research Online record for the item.

Takedown

If you consider content in White Rose Research Online to be in breach of UK law, please notify us by emailing eprints@whiterose.ac.uk including the URL of the record and the reason for the withdrawal request.



eprints@whiterose.ac.uk
<https://eprints.whiterose.ac.uk/>

1
2
3
4
5
6
7
8
9
10
11
12
13
14
15
16
17
18
19
20
21
22
23
24
25
26
27
28
29
30
31
32
33
34
35
36
37
38
39
40
41
42
43
44
45
46
47

**TRANSFERABILITY OF CAR-FOLLOWING MODELS BETWEEN DRIVING
SIMULATOR AND FIELD TRAFFIC**

Stavros Papadimitriou
Jacobs Engineering UK Ltd.
Institute for Transport Studies
University of Leeds
1 City Walk, Leeds, LS11 9DX, United Kingdom
Tel: +44 (0) 7542 339641 Email: stavrpapadimitriou@gmail.com

Charisma F. Choudhury*
Choice Modelling Centre
Institute for Transport Studies
University of Leeds
34-40 University Road, Leeds, LS2 9JT, United Kingdom
Tel: +44 (0) 113 34 32659 Email: C.F.Choudhury@leeds.ac.uk

*Corresponding author

Word count: 6510 text + 6 Figures + 3 Tables = 8760

Initial submission: July 30th, 2016

Resubmission: November 15th, 2016

ABSTRACT

Over the last few decades, there have been two parallel streams of driving behaviour research: models using trajectory data collected from the field (using video recordings, GPS, etc.) and models using data from the driving simulators (where the behaviours of the drivers are recorded in controlled laboratory conditions). While the former source of data is more realistic, it lacks information about the driver and is typically not suitable for testing effects of future vehicle technologies and traffic scenarios. On the other hand, driving behaviour models developed using driving simulator data may lack behavioral realism. However, there has not been any previous study which compares these two different streams of mathematical models and investigates the transferability of the models developed using driving simulator data to real field conditions in a rigorous manner. The present paper aims to fill in this research gap by investigating the transferability of the car-following models between a driving simulator and two comparable real-life traffic motorway scenarios, one from the UK and the other one from the US. In this regard, stimulus-response based car-following models have been developed using three different microscopic data sources: (i) experimental data collected from the University of Leeds Driving Simulator (UoLDS), (ii) detailed trajectory data collected from Motorway 1 (M1), UK and (iii) detailed trajectory data collected from Interstate 80 (I-80), CA, USA. The parameters of these car-following models are estimated using the Maximum Likelihood Estimation technique and transferability of the models are investigated using statistical tests of parameter equivalence and Transferability Test Statistics. Estimation results indicate transferability in the model level but not fully in the parameter level for both pairs of scenarios.

Keywords: Car-following, NGSIM, Driving Simulator, Validation, Transferability

1. BACKGROUND

Road safety continues to be an important issue with road crashes among the leading causes of death - accounting for more than 1.2 million fatalities and 50 million injuries globally each year (1). Driver behaviour is a factor in over 90 percent of crashes, with speeding as one of the major contributors (1). Driving behaviour models, which provide mathematical representations of how the drivers make decisions involving acceleration-deceleration, lane-changing, overtaking, etc., are increasingly being used for evaluation and prediction of road safety parameters and formulating remedial measures. Reliable driving behaviour models are also critical for accurate prediction of congestion levels in microscopic traffic simulation tools (2) and analyses of emissions (3). Moreover, driving behavior models have significantly contributed to the development and deployment of different Intelligent Transportation Systems (ITS) measures (4), (5).

Microscopic driving behaviour models are typically developed using two types of data, (a) driving simulator data (where participant drivers drive an instrumented vehicle in a simulated roadway) and (b) real traffic data. Data from the driving simulators are collected following standardized procedures and are more controllable and reproducible. Further, driving simulators allow researchers to manipulate the surrounding conditions (e.g. geometric layout of the road, number and type of vehicles, weather and pavement conditions and so on) as well as driver specific conditions (e.g. level of distraction and fatigue) and run various hypothetical scenarios. However, there is scepticism regarding the simulator fidelity (physical and behavioural) of how well the driver's behaviour in simulator match with his/her behaviour in real roads (6). On the other hand, the real traffic data best represent the true driving behaviour, but have several limitations: measurement errors, complex confounding of influencing factors, less control on the external factors, and absence of driver characteristics to name a few. Given the difference in the nature of the two data sources, it is of paramount importance to investigate the transferability of the model parameters between the driving simulator and the real traffic. It may be noted that in addition to these two sources, naturalistic driving data collected using instrumented vehicles (e.g. UDRIVE (7), SHRP2 (8) etc.) have also been used in research, but given the high costs involved, the availability of these data are still very limited. Moreover, similar to the driving simulator data, the naturalistic data are likely to be prone to behavioural incongruence; and similar to the field data, the external variables are often not fully controllable and it is not possible to test the effects of hypothetical scenarios.

There have been several previous researches on validation of driving behaviour observed in the driving simulator using isolated measures (e.g. speed, acceleration, reaction time, etc.). For instance, Törnros (9) attempted to validate driver's behaviour in terms of speed and lateral position in a simulated road tunnel. The results have shown that (i) behavioural validity in absolute terms is not satisfactory, especially referring to speed choice, while (ii) relative validity is achieved in both parameters. Godley et al. (10) conducted two different experiments in an instrumented car and a driving simulator comparing speed measurements. In both cases, the test roadway contained transverse rumble stripes at three locations and three additional control points (without rumble strips). The results again have demonstrated relative validity indicating that drivers decelerate in a similar pattern in the rumble strips, but have shown that drivers tend to drive faster in the real-life case than in the simulator and have hence failed to demonstrate absolute validity. Bella et al. (11) conducted a simulator validation study comparing drivers' speeds, in a deceleration lane and also found though relative validity was satisfactory in all scenarios, the differences in the mean speeds were significantly high in the simulator in non-demanding configurations (e.g. in presence of curves with large radius). This was assumed to stem from the different risk perception on the

1 simulated road as opposed to the real road. A similar study conducted from Yan et al. (12),
2 simulated a real signalized intersection, comparing drivers' speed behaviours in both cases.
3 Comparisons of the surrogate safety measures from the simulator with the crash analyses for the
4 field data have demonstrated relative validity. Further, the results illustrated that both the observed
5 and simulated speed data followed normal distributions with equal means for each intersection
6 approach - which validated the driving simulator in absolute terms as well. In addition, McGehee
7 et al. (13) investigated the validity of the simulator using drivers' reactions and performances in an
8 intersection scenario by conducting a series of experiments in Iowa Driving Simulator and a
9 similar field scenario and showed the statistical equivalence of the driver's reaction times between
10 the real-life and simulation cases. A validation study by Engen (14) used three different datasets
11 from (a) driving simulator, (b) an instrumented vehicle and (c) and road side monitoring and
12 compared data in terms of reaction times, speeds and lateral positions and time gaps. The findings
13 have shown that the outputs from the simulator have less variance compared to field traffic. A
14 recent study of Risto and Martens (15) compared drivers' choices in terms of headway while
15 driving a driving simulator and an instrumented vehicle. Both experiments were conducted on
16 same participants and the results have demonstrated significant similarity in speeds and headways
17 in two cases. Another validation study conducted by Lee (6) analysed the behaviour of older
18 drivers in driving simulator and on-road experiments and found significant positive association
19 between the two driving performance indices (developed using principal component analyses) and
20 after adjustment for age and gender of the drivers, was able to explain over two-thirds of the
21 variability of the on-road driving performance indices.

22 Majority of the validation studies thus confirm relative validity, though the findings regarding the
23 absolute validity are mixed. This raises the question whether or not the mathematical models of
24 driving behaviour are transferable between the two settings. To the best of our knowledge, there
25 has not been any previous research that examines the transferability of the parameters of a
26 mathematical model of driving behaviour between a driving simulator and a similar field traffic
27 condition. This paper aims to fill in this critical research gap.

28 The objective of this paper is to investigate the transferability of the car-following models between
29 a driving simulator and real traffic scenarios. In this regard, a state-of-the-art car-following model
30 is re-estimated using two sets of microscopic traffic data extracted from video recordings of real
31 traffic: one from the UK and the other one from the US (referred as Field Model UK and Field
32 Model US respectively) and trajectory data from a comparable scenario in the driving simulator
33 (referred as Sim Model). The performances of the models have been examined independently by
34 using informal tests (i.e. signs and values of the parameter estimates) and formal tests of statistical
35 differences (e.g. t-tests of parameter equality (16) and Transferability Test Statistic (17)).

36 The remainder of this paper is organized as follows: Section 2 focuses on the datasets, Section 3
37 outlines the details of the model structure, Section 4 presents the estimation results of the proposed
38 models and Section 5 focuses on the transferability analyses. Finally, Section 6 summarizes the
39 conclusions and suggests future research actions.

40 41 **2. DATA**

42 The following three secondary datasets have been used in this research:

- 43 • Driving simulator data of a UK Motorway scenario
- 44 • Video data from a segment of Motorway 1 (M1), UK
- 45 • Video data are from a segment of US101, USA

1 The descriptions of the study areas and the datasets are presented below followed by a critical comparison
2 which highlights their similarities and differences.

3

4 **2.1 Study Area**

5

6 **2.1.1 Driving Simulator Data**

7 The simulator data has been derived from an experimental study in the University of Leeds
8 Driving Simulator (UoLDS), one of the most advanced driving simulators in Europe. UoLDS has a
9 Jaguar S-type vehicle cab (see Figure 1a) with all driver controls fully operational. The vehicle's
10 internal Control Area Network (CAN) is used to transmit driver control information between the
11 Jaguar and a network of nine high performance computers that manages the complete simulation.
12 Control feedback is generated so that the driver seated in the cab feels (steering and pedal loading),
13 sees (dashboard instrumentation) and hears (engine, transmission and environmental noise) an
14 appropriate simulation of the driving environment (Figure 1b). The simulator incorporates an eight
15 degree-of-freedom motion system. A hexapod motion platform, carrying the 2.5t payload of the
16 dome and vehicle cab combination allows limited motion in all six orthogonal degrees-of-freedom
17 of the Cartesian inertial frame. Additionally, the platform is mounted on a railed sled that allows a
18 further 5m of effective travel in sway and surge. These aim to reduce, while not fully eliminate,
19 differences between real world and simulator driving behaviour (18).

20



21

22 a. Simulator Experience

23

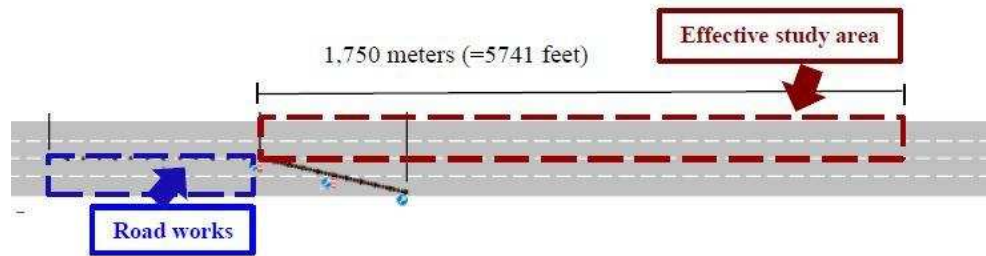
24 b. Motorway

25

26 **FIGURE 1:** Sample of driving Scenarios in UoLDS (18)

27

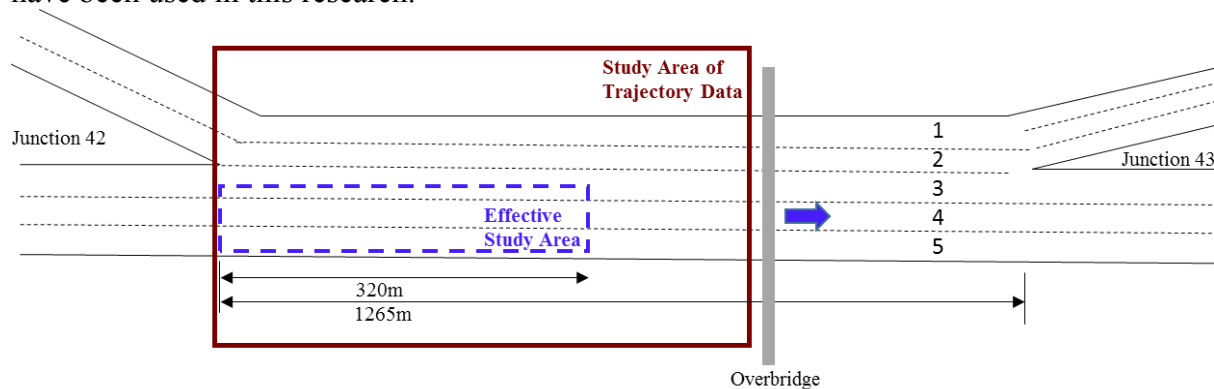
28 The experiment included forty participants (20 females, 20 males) aged between 19 to 83 years.
29 Each participant had to drive approximately 30-40 minutes on a road section of 2,000 meters (see
30 following Fig. 2). The participants were instructed to drive the simulator vehicle cab as if it were in
31 a real-life vehicle, obeying the specific speed limits and all legal regulations. The full simulator
32 study, performed as part of the Smart Motorway Project of the UK Highways Agency (19),
33 included driving decisions in presence of lane closures and roadwork, but in order to preserve
34 similarity with the field scenario (described in 2.1.2), only part of the data that had no disruption,
35 similar network topography and traffic flow levels as the field data has been used in this study.
36 Since, the focus of the study is on car-following behavior, the lanes affected by road closure
37 (which are likely to have more lane changes) are excluded and only data from the two rightmost
lanes have been retained for the model development. The full road network of the driving
simulator study and the selected segment are presented in Figure 2.



1
2 **FIGURE 2:** Schematic of road section, which was used in UoLDS experimental study
3 (Source: figure adopted from Highways Agency, UK (19))
4

5 2.1.2 Field Data UK

6 The disaggregate vehicle trajectory data collected between J42-J43 of the M1 motorway network in
7 the UK has been used as the first source of field data. The data was collected in May 2013 from an
8 over-bridge located 620m downstream from J42 and the trajectory data was extracted using a
9 semi-automated vehicle trajectory extractor application by Lee et al. (20). Due to the camera angle
10 and features of the trajectory extraction software, only data from the first 320m was found to be
11 usable. The details of the data collection and processing have been reported by Kusuma et al. (21).
12 The road section constitutes of five traffic lanes (Figure 3). Since, the focus of this research is on
13 car-following behaviour, the lanes that have the lowest number of lane changes (lanes 4 and 5)
14 have been used in this research.

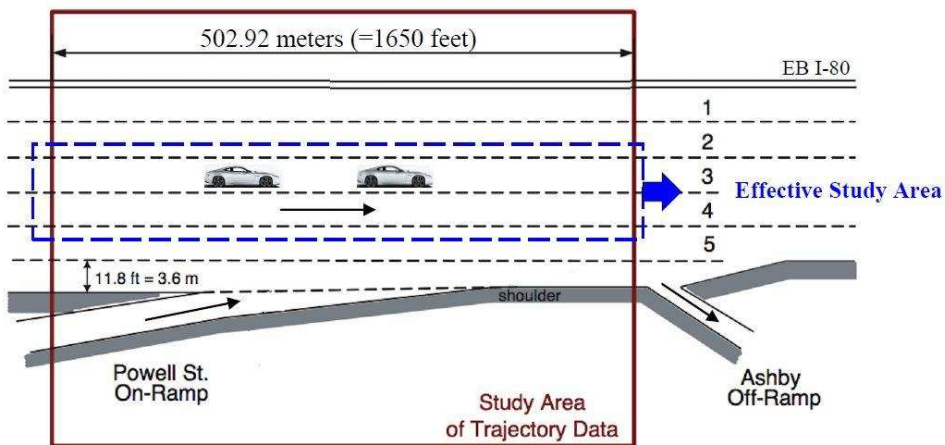


15
16 **FIGURE 3:** Estimation data collection site at the M1 motorway
17 (Source: figure adopted from Kusuma et al. (21))
18

19 2.1.3 Field Data US

20 The disaggregate vehicle trajectory data collected from the eastbound direction of Interstate 80
21 (I-80) in Emeryville, California, USA as part of the Next Generation Simulation (NGSIM)
22 program has been used as the field data. The data was collected in April 2005 using seven
23 synchronized digital video cameras set on top of tall buildings and covering a road length of
24 approximately 500 meters (1640 feet). Detailed coordinates of individual vehicles have been
25 extracted using the customized software NG-VIDEO at a 0.1 second time resolution (20).
26 The original road section constitutes of six traffic lanes including a high-occupancy vehicle (HOV)
27 lane (Figure 4). Since, the focus of this research is on car-following behaviour, the lanes that have
28 the lowest number of lane changes (lanes 3 and 4) have been used in this research. Further, since

1 maximum similarity with the driving simulator scenario is a critical element of this research, data
 2 between 5:15-5:30 pm, when the average flow rates were similar, have been used in the study. The
 3 explanatory variables used in the model estimation are created by VISUAL BASIC scripts (full
 4 details available in Papadimitriou2015) (23).



5
 6 **FIGURE 4:** Estimation data collection site at the I-80 motorway
 7 (Source: figure adopted from Choudhury et al. (24))

8 9 2.2 Comparison

10 Though a conscious effort has been made to maximize the similarity between the simulator and the
 11 field datasets, since they are all secondary datasets, there are some differences. It may be noted that
 12 even in a primary data collection using the driving simulator, even though the traffic flow rates and
 13 the behavior of the ambient traffic are controllable, since the speeds and accelerations are driven
 14 by the decisions taken by the participant, the observed speed and acceleration distributions are not
 15 fully controllable.

16 The key aggregate characteristics of the three datasets are presented in Table 1. Figure 5 presents
 17 the comparison between the distributions of the key variables in the three datasets.

18 As seen in Table 1 and Figure 5, the average speeds of the drivers are higher in the UoLDS data
 19 compared to the Field Data US. This is not unusual since in the simulator environment, though the
 20 participants have been instructed to drive as they would do in real roads, there is no actual risk of
 21 potential injury. This may encourage the driver to drive aggressively. It may be noted though that
 22 the difference was found to be much smaller between the UoLDS data and the Field Data UK.

23 Moreover, though the mean acceleration/deceleration levels in all three datasets had similarity, the
 24 driving simulator data revealed a larger clustering around the mean value. This is not unexpected
 25 given the much smaller number of drivers in the Sim Data. In all three datasets, accelerations close
 26 to 0 was found to have higher proportions (see Table 1 and Figure 5).

27 Concerning the distribution of the time headway, the UoLDS and the Field Data UK had flatter
 28 distributions compared to the Field Data US, but values from 2 sec to 4 sec appeared to be the most
 29 frequent in all three data sets (see Figure 5). It may be noted that in all three datasets, time headway
 30 values have been restricted to the upper bound (=5 sec) due to adopted definition of the
 31 car-following regime. Overall, though the three datasets had significant similarities in terms of
 32 geometry and flow levels, the speeds, accelerations and headways had significant variations.

1 **TABLE 1:** Summary of aggregate characteristics

| | Sim Data | Field Data UK | Field Data US |
|----------------------------|--|---|---|
| Survey year | 2014 | 2013 | 2005 |
| Source | University of Leeds | University of Leeds | NGSIM, FHWA |
| Road category | Motorway | Motorway | Motorway |
| Survey duration (min) | ≈ 30-35 minutes of driving for each participant | 15 minutes (17:15-17:30) | 15 minutes (17:00-17:15) |
| Luminance conditions | Daytime | Daytime | Daytime |
| Pavement conditions | Dry | Dry | Dry |
| Number of vehicles | 40 | 527 | 598 |
| Number of observations | 116,644 | 6,836 | 379,397 |
| Time resolution (sec) | 0.17 | 1.00 | 0.10 |
| Length of road section (m) | 1,750 | 320 | 502.92 |
| Traffic flow (veh/h/lane) | 1,700 | 1,500 | 1,600 |
| Comments | 2 out of 4 traffic lanes seperated roadwork parts seperated and removed (see Fig. 2) | 2 out of 5 traffic lanes seperated (see Fig. 3) | 2 out of 6 traffic lanes seperated (see Fig. 4) |

Variables

| | Maximum | Minimum | Mean | Median | Std. Dev. | Maximum | Minimum | Mean | Median | Std. Dev. | Maximum | Minimum | Mean | Median | Std. Dev. |
|---------------------------|----------------|----------------|-------------|---------------|------------------|----------------|----------------|-------------|---------------|------------------|----------------|----------------|-------------|---------------|------------------|
| Acceleration (m/s/s) | 2.04 | -5.52 | 0.00 | -0.01 | 0.29 | 6.96 | -6.97 | -0.70 | -0.55 | 1.40 | 3.41 | -3.41 | -0.03 | 0.00 | 1.34 |
| Subject speed (m/s) | 39.18 | 18.99 | 29.72 | 30.36 | 3.08 | 50.36 | 11.35 | 26.93 | 26.08 | 5.65 | 29.05 | 0.13 | 5.00 | 4.58 | 2.08 |
| Front vehicle speed (m/s) | 40.57 | 18.71 | 29.67 | 30.10 | 3.95 | 50.36 | 11.35 | 25.87 | 68.48 | 4.36 | 29.05 | 0.02 | 4.84 | 4.57 | 2.21 |
| Time headway (sec) | 5.00 | 0.00 | 2.69 | 2.64 | 1.14 | 5.00 | 0.02 | 2.30 | 2.22 | 0.03 | 5.00 | 0.00 | 3.07 | 3.02 | 0.96 |
| Space headway (m) | 190.97 | 0.00 | 80.18 | 77.71 | 35.18 | 129.91 | 3.24 | 51.25 | 43.43 | 29.04 | 60.00 | 0.00 | 14.22 | 13.10 | 5.61 |

2

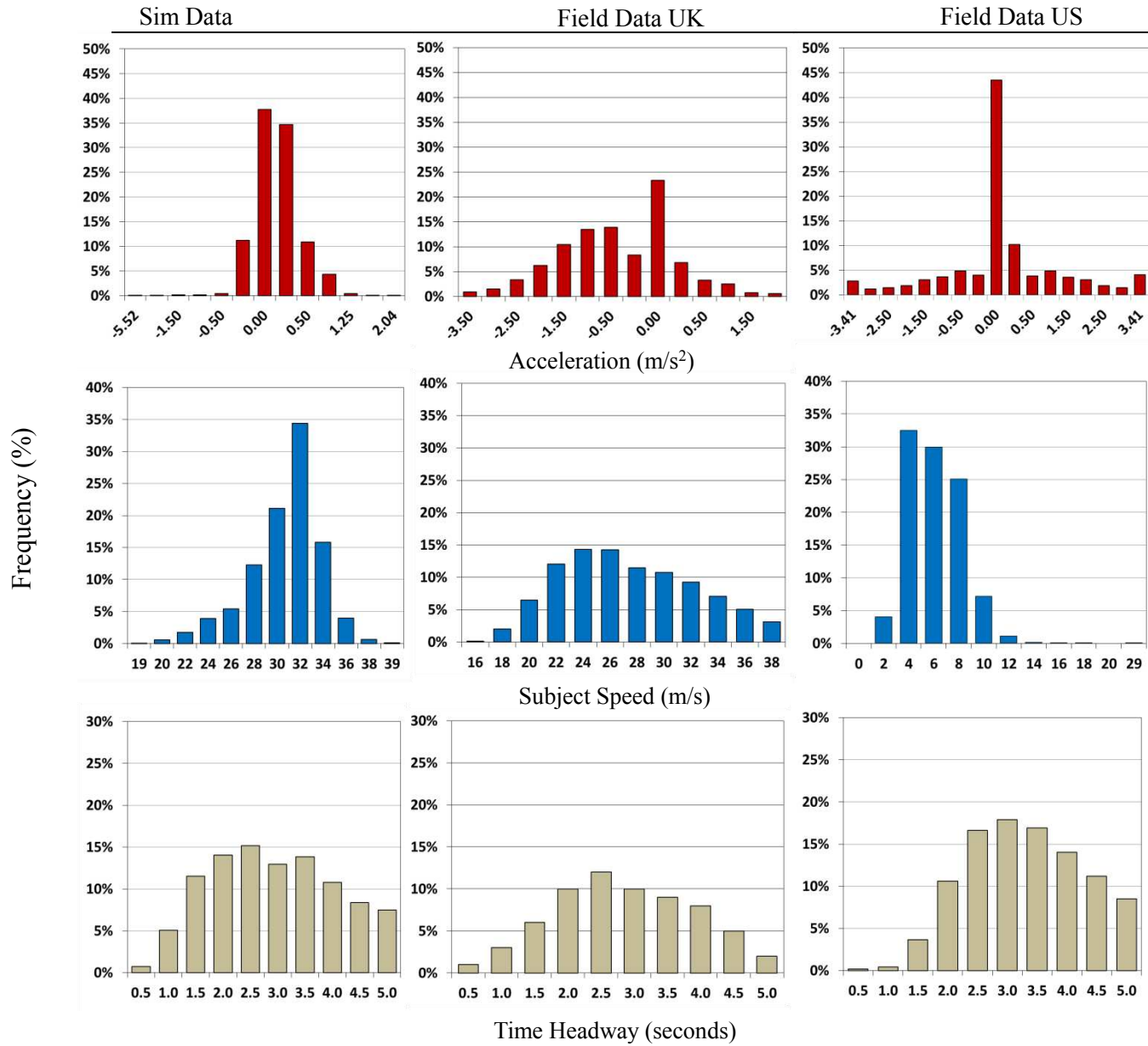


FIGURE 5: Distribution of key variables in three datasets

1 3. METHODOLOGY

2 This section covers the details of the model structure, the likelihood function used for estimation
3 and the transferability tests used in this study.

5 3.1 Model Structure

7 The longitudinal movement decisions of the driver tend to vary significantly depending on the
8 headway with the front vehicle. The acceleration models therefore typically have 2 states:

- 9 (a) car-following regime (constrained driving conditions)
- 10 (b) free-flow regime (unconstrained driving conditions)

11 The model structure used in this study is derived from Ahmed's study (25), which was practically
12 an extension of the earlier stimulus-response studies such as Subramanian's (26) and Gazis et al.
13 (27). In the stimulus-reponse framework, the subject driver accelerates/decelerates in response to
14 the stimulus (generally the speed difference) of the vehicle in the front (leader). The sensitivity
15 towards this stimulus can vary among the drivers and for the same driver on different situations.
16 Due to reaction time (typically between 0.5 to 3 seconds), there is a time lag between the stimulus
17 and the observed actions (accelerations/ decelerations). Ahmed's (25) model extended this basic
18 model by making it more flexible by assuming non-linear functions for the sensitivity function.
19 The stimulus part is typically a function related to the leader's relative speed (see Equation 1):

$$20 \Delta V_n(t) = V_n^{\text{Leader}}(t) - V_n(t) \quad (1)$$

21 Where,

22 $\Delta V_n(t)$ = Relative speed of driver n with respect to the leader at time t;

23 $V_n^{\text{Leader}}(t)$ = Speed of the lead vehicle of driver n at the time t;

24 $V_n(t)$ = Speed of driver n at the time t.

25 Further, the stimulus component can have two variations (i) when the speed difference between the
26 leader and the subject driver is positive, which essentially means that the leader drives faster than
27 the follower and (ii) when the difference is negative, which means that the follower drives faster
28 than the leader. The first case refers to acceleration conditions, whereas the second to deceleration.

29 The overall car-following acceleration is given by:

$$30 a_n(t) = \begin{cases} a_n^{\text{cf, acc}}(t), & \text{if } V_n(t - \tau_n) \geq 0 \\ a_n^{\text{cf, dec}}(t), & \text{otherwise} \end{cases} \quad (2)$$

31 However, it should be clarified that the correspondence to positive and negative stimuli may be
32 different for the simple reason that these two situations are fundamentally different and expected to
33 trigger different behavioural responses. The acceleration decisions, which are triggered by a
34 positive leader relative speed, is likely to be caused by speed advantage reasons and by
35 'herd-effect' (i.e. when people tend to adopt their behaviors or actions according to the others).
36 Deceleration decisions on the other hand are likely to be prompted by safety considerations. In
37 order to capture the aforementioned situations, the coefficients of explanatory variables of the
38 model can be positive or negative according to each stimuli.

1 The sensitivity part is a function related to the explanatory variables such as subject vehicle speed,
2 space and time headway, relative speed, etc.

3 The general formulation can be expressed as follows:

$$4 \quad a_n^j(t) = s^j \left[X_n^j(t) \right] k^j \left[\Delta V_n(t - \tau_n) \right] + \varepsilon_n^j(t) \quad j \in \{\text{acc}, \text{dec}\} \quad (3)$$

5 Where,

6 $s^j[\cdot]$ = sensitivity function;

7 $X_n^j(t)$ = explanatory variables affecting the sensitivity of the driver n at observed time t ;

8 $k^j[\cdot]$ = stimulus function;

9 $\varepsilon_n^j(t)$ = random error term of driver n at time t ;

10 $\varepsilon_n^j(t) \sim N(0, \sigma_j^2)$, that is, the random error is assumed to be distributed normally.

11
12 The model assumes that the correlations between acceleration decisions from the same driver over
13 time are captured only by the reaction time. The observations of the same driver are therefore
14 independent conditional on the reaction time. Under this assumption, the probability density
15 function of the car-following acceleration and car-following deceleration are given by:

$$16 \quad f\left(a_n^j(t) | \tau_n\right) = \frac{1}{\sigma_j} \phi \left(\frac{a_n^j(t) - s^j \left[X_n^j(t) \right] k^j \left[\Delta V_n(t - \tau_n) \right]}{\sigma_j} \right) \quad (4)$$

17 The distribution of the combined car-following model is given by:

$$18 \quad f\left(a_n(t) | \tau_n\right) = f\left(a_n^{\text{acc}}(t) | \tau_n\right)^{V_n(t - \tau_n) \geq 0} f\left(a_n^{\text{dec}}(t) | \tau_n\right)^{V_n(t - \tau_n) < 0} \quad (5)$$

19 The trajectory data constitutes as series of acceleration decisions of the same driver. The
20 acceleration profile of the driver can be expressed as follows:

$$21 \quad f\left(a_n(1), a_n(2), a_n(3), \dots, a_n(\tau_n) | \tau_n\right) = \prod_1^{\tau_n} f\left(a_n(t) | \tau_n\right) \quad (6)$$

22 Where, T_n is the number of observations of driver n . Assuming the observations of different drivers
23 are independent, the log-likelihood function (conditional on reaction time) is presented by
24 Equation (5).
25

$$26 \quad LL = \int_{\tau_n} \sum_{n=1}^N \ln \left[f\left(a_n(1), a_n(2), a_n(3), \dots, a_n(\tau_n)\right) \right] \quad (7)$$

27 The unconditional likelihoods can be derived by integrating the function over the reaction
28 time distribution and the model parameters can be derived by maximizing this likelihood function.
29

30 **3.2 Evaluating Models Performance and Transferability**

31 Review of literature revealed several formal statistical tests of transferability (28) among which
32 the *t-tests of individual parameter equality* and *Transferability Test Statistic* (TTS) have been
33 found to be most widely used and selected for this study.

1 The t-tests of individual parameter equality compares the individual pairs of coefficients by testing
 2 the t-stat for absolute difference between the parameter estimates of equivalent variables between
 3 the two models (e.g. of Galbraith and Hensher's study, (16)). The t-stat differences can be
 4 expressed as follows:

$$5 \quad t_{diff,k} = \frac{\hat{\beta}_{trans,k} - \hat{\beta}_{appl,k}}{\sqrt{\left(\frac{\hat{\beta}_{trans,k}}{t_{trans,k}}\right)^2 + \left(\frac{\hat{\beta}_{appl,k}}{t_{appl,k}}\right)^2}} \quad (8)$$

6 Where,

7 $\hat{\beta}_{trans,k}$ and $\hat{\beta}_{appl,k}$ = estimates for the k-th parameter in the transferred and application models;

8 $t_{trans,k}$ and $t_{appl,k}$ = the respective t-stat. ratios of the parameter estimates;

9 $t_{diff,k}$ = t-stat. ratio for the difference between parameters. At 95% level of confidence, the model
 10 parameters are classified to be statistically different (i.e. non-equal) if $t_{diff,k} > 1.96$.

11
 12 The Transferability Test Statistic (TTS) (Atherton and Ben-Akiva's study, (17)) refers when the
 13 transferred model is statistically equivalent to the applicable (estimated) model in the application
 14 context, is rejected or not. The respective formula is presented below:

$$16 \quad TTS_{appl}(\hat{\beta}_{trans}) = -2(LL_{appl}(\hat{\beta}_{trans}) - LL_{appl}(\hat{\beta}_{appl})) \quad (9)$$

17 Where,

18 $LL_{appl}(\hat{\beta}_{trans})$ = log-likelihood on the application context data using transferred context
 19 parameters;

20 $LL_{appl}(\hat{\beta}_{appl})$ = log-likelihood on the application context data using application context
 21 parameters;

22 $TTS_{appl}(\hat{\beta}_{trans})$ = transferability test statistic of the transferred model in application context.

23
 24 The TTS value follows a chi-squared (χ^2) distribution with degrees of freedom (dof) equal to the
 25 number of parameters. At 95% level of confidence, the models are classified to be statistically
 26 different (i.e. non-transferable) if $\chi^2 > \chi^2_{critical}$ (17).

27

28 4. RESULTS

29 The development of the models aimed to achieve three key objectives,

- 30 (i) A logical structure
- 31 (ii) Rational signs of model parameters according to the stimulus-response concept and
- 32 (iii) Best goodness-of-fit and statistically significant model parameters.

The OX Metrics econometric package (29) was used for the estimation of the acceleration model parameters. The explanatory variables were statistically checked, both individually (e.g. standard errors and t-stat values) and according to its correlation with the other explanatory variables (e.g. covariance matrices). The critical time headway (differentiating between car-following and free-flow) has been selected to be 5 seconds in line with previous studies on motorway scenarios (25).

According to the literature, reaction time ranges from a minimum value of 0.5 seconds to a maximum value of 2.5 seconds (25-40). Models have been estimated using different reaction times within this range and reaction time equal to 0.5 seconds has been selected for both cases based on goodness of fit values.

Adjusted Rho Square ($\overline{\rho^2}$) measures the fraction of an initial log-likelihood value explained by the final model taking into account the model complexity (i.e. discounting for the additional parameters). The formula is defined as follows:

$$\overline{\rho^2} = 1 - \frac{LL(\beta^*) - k}{LL(0)} \quad (10)$$

Where, $LL(\beta^*)$ is the maximum log-likelihood value $LL(0)$ is the maximum log-likelihood value and k is the number of estimated parameters.

The final estimation results are presented in Table 2.

TABLE 2: Estimation Results

| <u>Car-following acceleration</u> | | | | | | | | |
|-----------------------------------|-----------|---------|----------------|---------|----------------|---------|---------------------------------|----------------------------|
| Variable | Sim Model | | Field Model UK | | Field Model US | | t-stat. diff* (absolute values) | |
| | Parameter | t-stat. | Parameter | t-stat. | Parameter | t-stat. | Sim Model & Field Model UK | Sim Model & Field Model US |
| Constant | 0.247 | 10.46 | 0.039 | 10.77 | 0.154 | 5.80 | 8.70 | 2.62 |
| Relative speed (m/s) | 0.226 | 3.86 | 3.266 | 20.35 | 3.989 | 28.54 | 17.79 | 24.83 |
| Time headway (sec) | 0.012 | 0.29 | 0.028 | 1.17 | 1.348 | 6.18 | 0.36 | 6.03 |
| Sigma | 0.152 | 38.56 | 0.024 | 24.79 | 0.233 | 24.60 | 31.62 | 7.84 |

| <u>Car-following deceleration</u> | | | | | | | | |
|-----------------------------------|-----------|---------|----------------|---------|----------------|---------|---------------------------------|----------------------------|
| Variable | Sim Model | | Field Model UK | | Field Model US | | t-stat. diff* (absolute values) | |
| | Parameter | t-stat. | Parameter | t-stat. | Parameter | t-stat. | Sim Model & Field Model UK | Sim Model & Field Model US |
| Constant | -0.218 | -12.39 | -0.145 | -11.85 | -3.722 | -1.65 | 3.41 | 1.55 |
| Relative speed (m/s) | 0.327 | 4.50 | 1.984 | 48.42 | 11.098 | 28.54 | 19.86 | 27.23 |
| Time headway (sec) | 0.054 | 2.04 | 0.089 | 13.82 | 1.463 | 6.41 | 1.28 | 6.13 |
| Sigma | 0.127 | 44.36 | 0.024 | 25.38 | 0.227 | 54.60 | 34.07 | 19.95 |

*t-tests of individual parameter equivalence (Galbraith and Hensher, 1982)

It may be noted that a couple of additional variables have also been tested but not included in the final models. These include the current and lagged speed and acceleration of the driver, the type of the front vehicle, the type of the subject vehicle type and traffic density. The coefficients of these variables were found to be non-intuitive and insignificant.

1 4.1 Estimation Results of the Sim Model (Driving simulator data)

2 The car-following acceleration model estimated using the driving simulator data is defined as
3 follows:

$$4 \quad a_n^{cf,acc}(t) = 0.247 \frac{1}{\Delta T_n(t)^{0.012}} |\Delta V(t - \tau_n)|^{0.226} + \varepsilon_n^{cf,acc}(t) \quad (11)$$

$$5 \quad \varepsilon_n^{cf,acc}(t) \approx N(0, (0.152)^2)$$

6
7
8
9 Where,

10 t = current time period;

11 τ_n = reaction time for driver n ;

12 $a_n(t)$ = acceleration for driver n at time t ;

13 $\Delta T_n(t)$ = time headway at time t (sec);

14 $|\Delta V(t - \tau_n)|$ = absolute value of relative speed between subject and leader vehicle at time t

15

16 Whereas, the estimated car-following deceleration model is:

17

$$18 \quad a_n^{cf,dec}(t) = -0.218 \frac{1}{\Delta T_n(t)^{0.054}} |\Delta V(t - \tau_n)|^{0.327} + \varepsilon_n^{cf,dec}(t) \quad (12)$$

$$19 \quad \varepsilon_n^{cf,dec}(t) \approx N(0, (0.127)^2)$$

20

21 As can be seen in Table 2 and equations (11) and (12), all estimated coefficients of the Sim model
22 have the expected signs and magnitudes. Concerning the stimulus term of the car-following
23 regime, it increases with relative speed hence as expected and the sign is positive in both cases of
24 acceleration and deceleration models (referring to a positive correlation between the relative speed
25 and the magnitude of acceleration that the driver applies).

26 In the sensitivity component, the signs of the constant parameters are positive for acceleration and
27 negative for deceleration as expected. Apart from this, both constant parameters have similar
28 magnitudes showing similarity in acceleration and deceleration ranges if all else are equal.

29 Regarding, the time headway, as expected, the drivers tend to be less sensitive to the same stimulus
30 as the time headway gets larger. On the other hand, in deceleration model, it can be concluded that
31 drivers tend to decelerate more to the same stimulus when the time headway reduces. That could
32 be logically justified for the reason that drivers' safety concerns grow when the time headway
33 decreases, by making them to decelerate so as to obtain again a safe headway from leader vehicle.
34 Most of the parameters are significant at 95% level of confidence, except for time headway. This
35 t-stat. value of this variable is equal to 0.26 and this may be related to low time headway variability
36 in driving simulator data (see Figure 5). This has however been retained for comparison purposes
37 since the time headway was found to be a statistically significant variable in the Field Model US.

38

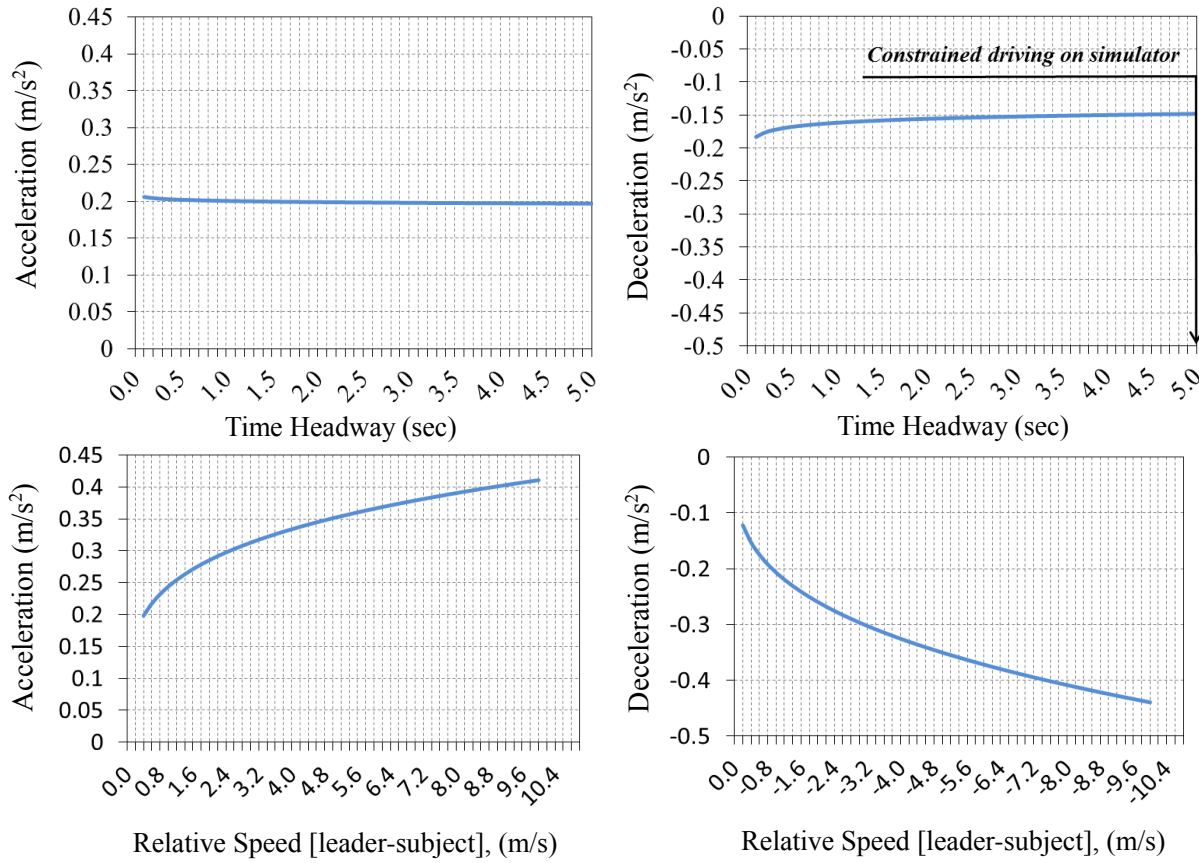


FIGURE 6: Sensitivity of different variables in car-following acceleration and deceleration models according to the Sim Model

Figure 6 presents the sensitivity analysis showing the performance of variables in both acceleration and deceleration models. The default values set assumed to be: the relative speed equal to 0.5 or (-0.5) m/s and time headway equal to 2.7 sec. These numbers have been derived from mean values of driving simulator sample.

According to the sensitivity analysis it is apparent that the mean acceleration (deceleration) is not substantially affected in magnitude by time headway. On the contrary, relative speeds have larger impacts on acceleration-deceleration magnitudes.

4.2 Estimation Results of the Field Model UK (Real Traffic Data from M1, UK)

The car-following acceleration model estimated using field data from the UK is as follows:

$$a_n^{cf,acc}(t) = 0.039 \frac{1}{\Delta T_n(t)^{0.028}} |\Delta V(t - \tau_n)|^{3.266} + \varepsilon_n^{cf,acc}(t) \quad (13)$$

$$\varepsilon_n^{cf,acc}(t) \approx N(0, (0.024)^2)$$

Where,

t = current time period;

- 1 τ_n = reaction time for driver n ;
 2 $a_n(t)$ = acceleration for driver n at time t ;
 3 $\Delta T_n(t)$ = time headway at time t (sec);
 4 $|\Delta V(t - \tau_n)|$ = absolute value of relative speed between subject and leader vehicle at time t

5
 6 Whereas, the estimated car-following deceleration model is as follows:
 7

$$8 \quad a_n^{cf,dec}(t) = -0.145 \frac{1}{\Delta T_n(t)^{0.089}} |\Delta V(t - \tau_n)|^{1.984} + \varepsilon_n^{cf,dec}(t) \quad (14)$$

$$9 \quad \varepsilon_n^{cf,dec}(t) \approx N(0, (0.024)^2)$$

10
 11 Similar to the Sim Model, signs of all parameters of the Field Model UK have the expected logical
 12 signs. Further, all model parameters are statistically significant at 95% level of confidence apart
 13 from the coefficient of time headway which was insignificant also in the Sim Model. However, the
 14 parameter has been retained as the sign is intuitive and the corresponding parameter has been
 15 found to be statistically significant in the Field Model US.

16 Regarding the stimulus part of the model, both car-following acceleration and decelerations
 17 increase with relative speeds. It may be noted that these parameters are much larger in magnitude
 18 compared to the Sim Model parameters. The behavioural incongruence while driving the driving
 19 simulator can be a potential reason for this.

20 In the sensitivity component, the time headway parameters have expected positive signs. This
 21 refers that the drivers tend to accelerate less as the time headway with the leader increases. On the
 22 other hand, in the deceleration model, it can be concluded that as the time headway decreases, the
 23 drivers tend to decelerate more to the same stimulus, due to safety concerns in order to avoid a
 24 potential collision and finally obtain again a safe headway from the leader vehicle. The time
 25 headway parameter is slightly larger for deceleration compared to acceleration as expected since
 26 acceleration only leads to speed advantage whereas, deceleration is prompted by collision
 27 avoidance (safety). It may be noted that the similar trend has been observed for Sim Model as well.
 28 The following Figure 6 shows the sensitivity analysis, presenting the performance of the models.
 29 The default values set assumed to be: relative speed = 0.7 or (-0.7) m/s and time headway equal to
 30 2.3 sec. These numbers derived from the corresponding mean values in the sample dataset. An
 31 attempt has been made to keep the sensitivity analysis in low values of acceleration-deceleration,
 32 so as to highlight the drivers' behaviours under these crucial and sensitive constrained traffic
 33 conditions.
 34

35 According to Figure 7, the drivers are extremely sensitive to the changes in the relative speed, both
 36 for the acceleration and for deceleration compared to the Sim Model. The effect of the time
 37 headway variable however is more similar to that of the driving simulator.
 38
 39
 40
 41
 42
 43
 44

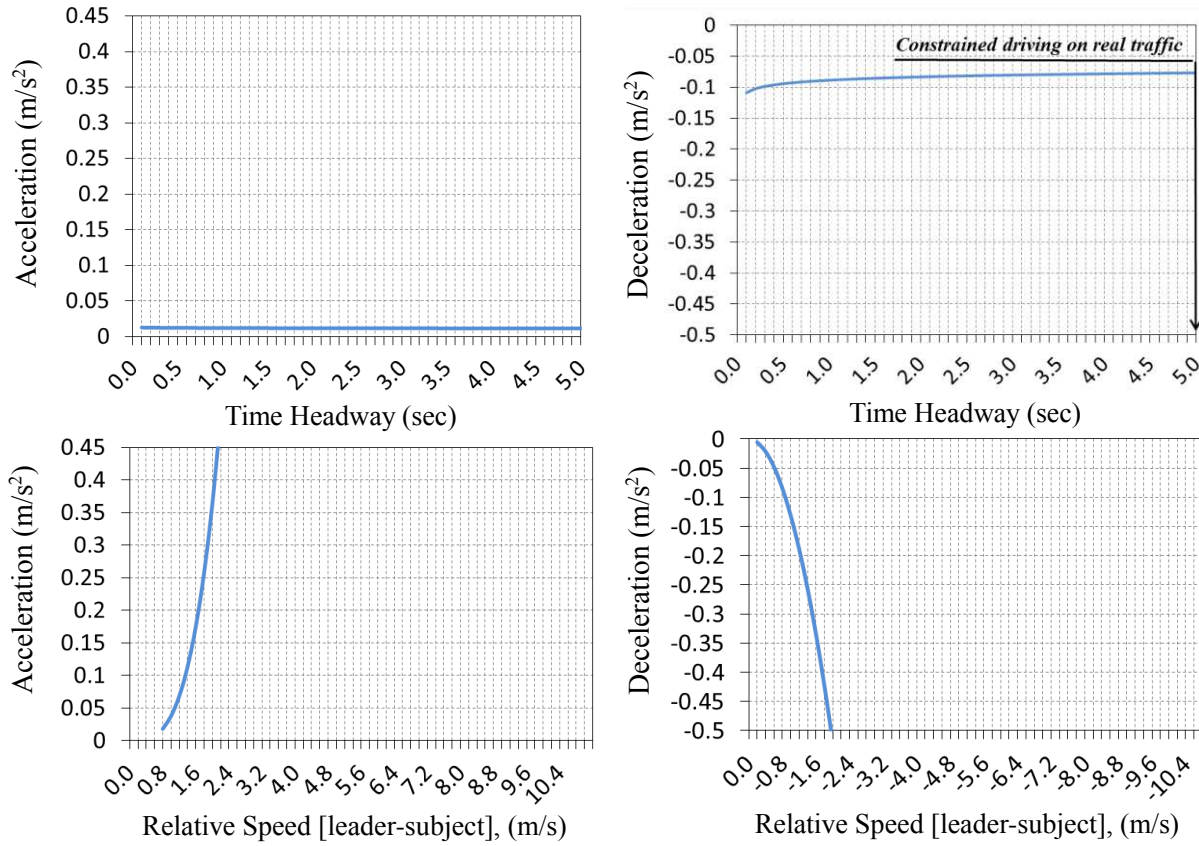


FIGURE 7: Sensitivity of different variables in car-following acceleration and deceleration models according to the Field Model UK

4.2 Estimation Results of the Field Model US (Real Traffic Data from US101, USA)

The estimated car-following acceleration using field data is as follows:

$$a_n^{cf,acc}(t) = 0.154 \frac{1}{\Delta T_n(t)^{1.348}} |\Delta V(t - \tau_n)|^{3.989} + \varepsilon_n^{cf,acc}(t) \quad (15)$$

$$\varepsilon_n^{cf,acc}(t) \approx N(0, (0.233)^2)$$

Where,

t = current time period;

τ_n = reaction time for driver n ;

$a_n(t)$ = acceleration for driver n at time t ;

$\Delta T_n(t)$ = time headway at time t (sec);

$|\Delta V(t - \tau_n)|$ = absolute value of relative speed between subject and leader vehicle at time t

Whereas, the estimated car-following deceleration model is as follows:

$$a_n^{cf,dec}(t) = -3.722 \frac{1}{\Delta T_n(t)^{1.463}} |\Delta V(t - \tau_n)|^{1.098} + \varepsilon_n^{cf,dec}(t) \quad (16)$$

$$\varepsilon_n^{cf,dec}(t) \approx N(0, (0.227)^2)$$

Similar to the Sim model, signs of all parameters of the Field model have the expected logical signs. Further, all model parameters are statistically significant at 95% level of confidence apart from the constant for acceleration (which is statistically significant at 90% level of confidence). Regarding the stimulus part of the model, both car-following acceleration and decelerations increase with relative speeds. It may be noted that these parameters are much larger in magnitude compared to the Sim model parameters (particularly for the deceleration model). The behavioural incongruence while driving the driving simulator can be a potential reason for this.

In the sensitivity component, the time headway parameters have expected positive signs. This refers that the drivers tend to accelerate less as the time headway with the leader increases. On the other hand, in the deceleration model, it can be concluded that as the time headway decreases, the drivers tend to decelerate more to the same stimulus, due to safety concerns in order to avoid a potential collision and finally obtain again a safe headway from the leader vehicle. The time headway parameter is slightly larger for deceleration compared to acceleration as expected since acceleration only leads to speed advantage whereas, deceleration is prompted by collision avoidance (safety).

The following Figure 8 shows the sensitivity analysis, presenting the performance of the models. The default values set assumed to be: relative speed = 0.7 or (-0.7) m/s and time headway equal to 3 sec. These numbers derived from the mean values of the sample. An attempt has been made to keep the sensitivity analysis in low values of acceleration-deceleration, so as to highlight the drivers' behaviours under these crucial and sensitive constrained traffic conditions.

According to Figure 7 the mean acceleration values are extremely sensitive in low time headway values showing a noticeable aggressive way of driving compared to the Sim Data and the Field Data UK. As the time headway increases, drivers tend not to accelerate at all and maintain stable speed. On the other hand, deceleration values show that the drivers decelerate at a slower rate as the time headway grows. For the relative speed, for acceleration, the drivers are extremely sensitive to the changes in the relative speed as in the Field Model UK (but not in the Sim Model).

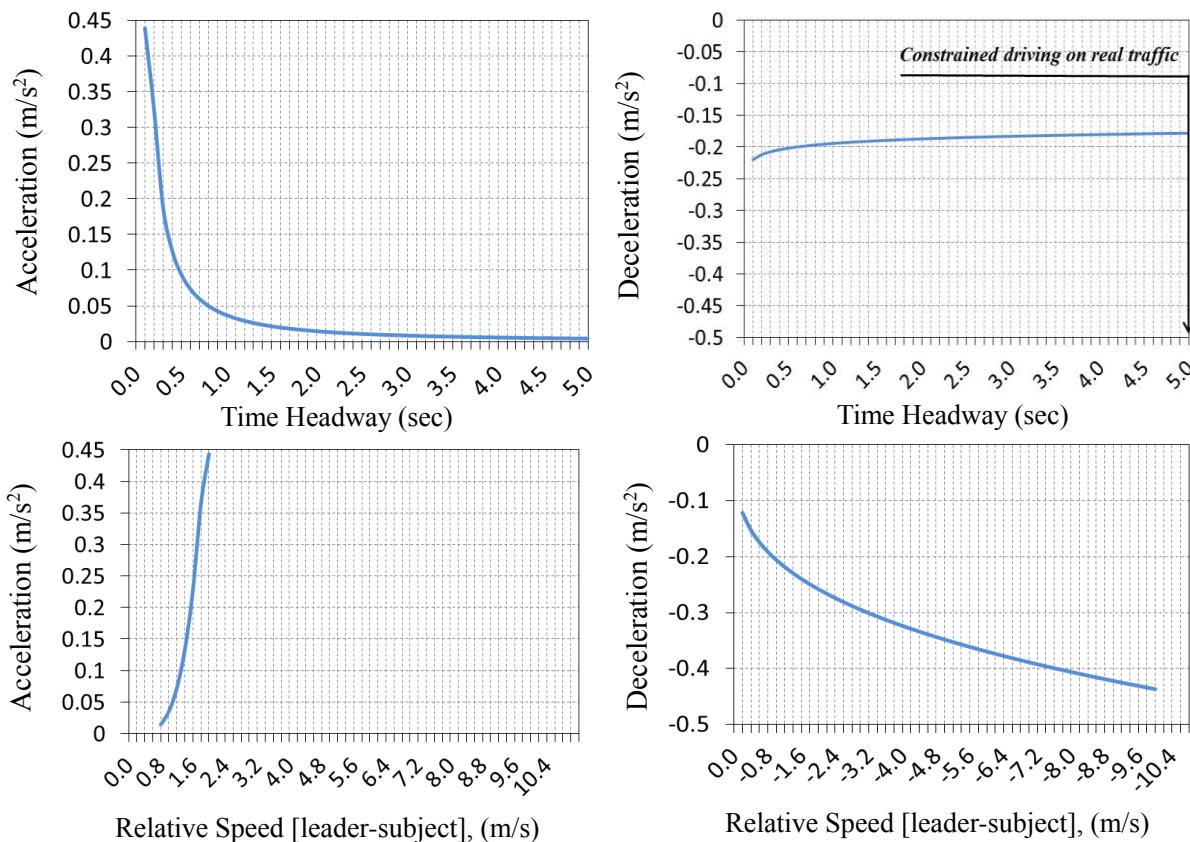


FIGURE 8: Sensitivity of different variables in car-following acceleration and deceleration models according to the Field Model US

5. MODEL COMPARISON AND TRANSFERABILITY

As mentioned, two forms of formal transferability tests have been conducted: the t-tests of individual parameter equality (parameter level transferability) and TTS (model level transferability).

Comparison of the model parameters and t-stat differences (as presented in the last two columns of Table 2) reveal the following:

- There are statistically significant differences in magnitudes of the relative speed (stimulus) parameters between the Sim Model and both Field Models. This reflects the behavioural incongruence of drivers in the driving simulator which is in line with the findings of the driving simulator validation studies (detailed in Section 2).
- The differences in the magnitudes of the time headway (sensitivity) parameters are however not statistically different only between the Sim Model and Field Model US. It may be noted though for acceleration components, the time headway parameter was not found to be statistically significant in the Sim Model and Field Model UK in the first place. However, the results provide some indication that some parameters may be more transferable between the driving simulator and the field if the driver population is similar (i.e. both from the same location).

- Most parameters (apart from the deceleration constant) are not directly transferable between the driving simulator and the Field Data US.

The Transferability Test Statistic (TTS) results are summarized in Table 3.

TABLE 3: Transferability Test Statistic (TTS) Results

| Summary statistics | Case 1 | | Case 2 | |
|---|----------------|----------------|----------------|----------------|
| | Sim to Field 1 | Sim to Field 2 | Field 1 to Sim | Field 2 to Sim |
| Degrees of freedom (df) | 2 | 2 | 2 | 2 |
| LLapplic(β_{transf}) | 4578.24 | 59.6819 | 12.1245 | 10.2592 |
| LLapplic(β_{applic}) | 4579.63 | 60.7376 | 13.2316 | 13.2316 |
| $-2[\text{LLapplic}(\beta_{\text{transf}}) - \text{LLapplic}(\beta_{\text{applic}})]$ | 2.78 | 2.11 | 2.21 | 5.94 |

As presented in Table 3, two different scenarios have been tested so as to validate if driving simulator behaviour can be transferred to real-life world and vice versa. Comparison with the critical χ^2_{critical} value at 95% level of significance (which is 5.99) indicates that the models are transferable for both directions (i.e. driving simulator to field and vice versa). The former is of more practical importance.

6. CONCLUSIONS

In this paper, we have investigated the transferability of the parameters of a car-following model between a driving simulator and two real world scenario using secondary datasets from the UK and USA. According to the results of the t-tests of individual parameter equality between the Sim Model and the Field Model USA, most of the model parameters have been found to be significantly different in parameter level at 95% level of confidence (except the constant parameter of the car-following deceleration model). The parameter level transferability has been found to be slightly better between the Sim Model and the Field Model UK where the sensitivity parameter (coefficient of the time headway variable) has also been found to be transferable. The transferability statistical test (TTS) results however indicate bi-directional transferability on the model level in both cases. This means that as a package, the models are transferable from the driving simulator to the field. This holds even if there are differences in geographical locations. For instance, for the second case study, the Sim Data was collected in the UK while the Field Data was collected from the USA, but the model level transferability still holds. On a practical term, this indicates that the predictions of acceleration/deceleration values generated from models (as in microsimulation packages) using Simulator or Field data will result insignificant differences. This is an important endorsement for use of driving simulator data for development of driving behaviour models for application in microsimulation tools. However, if an analyst is interested about effects of a specific variable in isolation (e.g. effect of headway on acceleration or effect of relative speed on acceleration, etc.), the results may not be directly transferable. This finding is expected to have immense practical importance while applying the driving behaviour models estimated using driving simulator data for quantifying the relative benefits of alternative safety improvement measures in the field. In this particular research, the discrepancy appears to be less if the field location is geographically/spatially closer.

1 However, it may be noted that the results need to be used with caution since the two field datasets
2 have been collected and processed by different teams using different hardware and software.

3 Though, the state-of-the-art technologies have been used in both cases, given the state of image
4 processing technology, both datasets are likely to have some measurement errors and in the
5 absence of ground truth data, it is not possible to precisely determine the extent of such errors. This
6 initial finding therefore needs to be investigated further with additional field datasets from
7 geographically closer and further locations preferably cross-verified with more accurate
8 datasources (e.g. high precision GPS data).

9 The results also have some other limitations - mainly due to the nature of the secondary data used
10 in the two different environments (real roads and simulation). For instance, though care has been
11 taken to maximize the similarity between the Sim and the Field datasets, differences in speeds,
12 accelerations and headways (partially arising from differences in congestion levels) have been
13 observed. This is in line with previous studies on driving simulator validation though, where the
14 drivers have been observed to drive at higher speeds in the driving simulator in similar speed limits
15 and congestion levels. Primary data collection in the driving simulator, can however help to
16 minimize these differences.

17 Further, the models developed as part of the study ignores the heterogeneity among the drivers in
18 reaction times, desired headways and headway thresholds demarkating car-following and other
19 acceleration regimes (41). In this regard, an interesting direction can be to incorporate the effect of
20 driver characteristics (e.g. age, gender, experience) in the combined models which are also expected
21 to improve the predictive capabilities of the models (for instance better capture the heterogeneity
22 in the reaction times and headways) .

23 Moreover, the scope of this study is limited to car-following models based on stimulus-response
24 framework. Further research is required to test if the similar findings hold for other acceleration
25 regimes (e.g. free-flow, emergency, etc.), different model frameworks (e.g. the Intelligent-Driver
26 Model, Psycho-physical Models, etc.) as well as other choice dimensions (e.g. lane changing). It
27 will be also interesting to validate the findings of this study by examining differences in traffic
28 predictions of Sim Models and Field Models in microscopic traffic simulation tools.

29 Based on the findings of this study, we are currently investigating methods to make the models
30 more transferable using updating mechanisms (e.g. Bayesian Updating (42)), Combined Transfer
31 Estimation Techniques (43) as well as estimating the models jointly with both data sources using
32 data combination techniques (e.g. (44)). On a parallel study we are investigating the spatial and
33 temporal transferability of driving behavior models (which also includes investigating the effects
34 of different congestion levels) in further detail which may provide further insights to the results of
35 this research.

36 37 **ACKNOWLEDGEMENTS**

38
39 The research is partially supported by the Next Generation Driving Behaviour Model (NG-DBM)
40 project funded by FP7Marie Curie Career Integration Grant of the European Union. The field
41 dataset from the USA has been collected as part of the Next Generation Simulation (NGSIM)
42 program of the US Federal Highways and the UoLDS has been collected as part of the Smart
43 Motorway Project of the UK Highway Agency. The fiels dataset from the UK has been collected as
44 part of the Doctoral Research of Dr. Andyka Kusuma. We thank him for providing us the processed
45 data. We also thank Dr. Daryl Hibberd, Research Fellow, University of Leeds for his help in
46 collecting and processing the driving simulator data.

REFERENCES

1. World Health Organization. Violence, Injury Prevention and World Health Organization, Global Status Report on Road Safety, 2015.
2. Barceló, J. Fundamentals of traffic simulation. International Series in Operations Research and Management. New York: Springer, Vol. 145, 2010.
3. Ahn, K., Rakha, H., Trani, A., and Van Aerde, M. Estimating Vehicle Fuel Consumption and Emissions based on Instantaneous Speed and Acceleration Levels. *Journal of Transportation Engineering*, Vol. 128, No. 2, 2022, pp. 182-190.
4. Vaa, T. Modelling Driver Behaviour on Basis of Emotions and Feelings: Intelligent Transport Systems and Behavioural Adaptations. In *Modelling driver behaviour in automotive environments*. Springer London, 2007, pp. 208-232.
5. Koutsopoulos, N.H., and Farah, H. Latent Class Model for Car Following Behavior In *Transportation Research Record: Journal of the Transportation Research Board, Methodological*, Vol. 46, Transportation Research Board of the National Academies, Washington, D.C., 2012, pp. 563-578.
6. Lee, H.C. The validity of driving simulator to measure on-road driving performance of older drivers. *Transport Engineering in Australia*, Vol. 8, No. 2, 2003, pp. 89.
7. UDRIVE. European Naturalistic Driving Study. Available on-line at: <http://www.udrive.eu>, Assessed Feb. 28, 2016.
8. SHRP2. Strategic Highway Research Program. Available on-line at: <http://www.shrp2nds.us>, Assessed Mar. 13, 2016.
9. Törnros, J. Driving behaviour in a real and a simulated road tunnel—a validation study. *Journal of Accident Analysis & Prevention*, Vol. 30, No.4, 1998, pp. 497-503.
10. Godley, S. T., Triggs, T. J., and Fildes, B. N. Driving Simulator Validation for Speed Research. *Journal of Accident Analysis & Prevention*, Vol. 34, No. 5, 2002, pp. 589-600.
11. Bella, F., Garcia, A., Selves, F., and Romero, M.A. Driving simulator validation for deceleration lane design. *Proceedings of the 86th Transportation Research Board Annual Meeting*, No. 07-0894, Washington, D.C., 2007.
12. Yan, X., Abdel-Aty, M., Radwan, E., Wang, X., and Chilakapati, P. Validating a driving simulator using surrogate safety measures. *Journal of Accident Analysis & Prevention*, Vol. 40, No. 1, 2008, pp. 274-288.
13. McGehee, D.V., Mazzae, E. N., and Baldwin, G. S. Driver Reaction Time in Crash Avoidance Research: Validation of a Driving Simulator Study on a Test Track. *Proceedings of the Human Factors and Ergonomics Society Annual Meeting*. SAGE Publications, Vol. 44, No. 20, 2000, pp. 3-320.
14. Engen, T. Use and Validation of Driving Simulators. *Fakultet for Ingeniørvitenskap og teknologi*, 2008.
15. Risto, M., and Martens, M.H. Driver Headway Choice: A Comparison between Driving Simulator and Real-Road Driving. In *Transportation Research Record: Journal of the Transportation Research Board, Part F: Traffic Psychology and Behavior*, Vol. 25, Transportation Research Board of the National Academies, Washington, D.C., 2014, pp. 1-9.
16. Galbraith, R.A., and Hensher, D.A. Intra-Metropolitan Transferability of Mode Choice Models. *Journal of Transport Economics and Policy*, 1982, pp.7-29.
17. Atherton, T.J., and Ben-Akiva, M.E. Transferability and Updating of Disaggregate Travel Demand Models. No. 610. 1976, 1976.
18. University of Leeds Driving Simulator. UoLDS. Smart Motorways: All Lanes Running.

- 1 Faculty of Environment. Institute for Transport Studies. Official Data. Leeds, United
2 Kingdom. 2014.
- 3 19. Highways Agency. Smart Motorways. UK Government. Available on-line at:
4 <https://www.gov.uk/government/collections/smart-motorways#history>, Accessed Aug. 9,
5 2015.
- 6 20. Lee, T., Polak, J.W. and Bell, M.G.H. Trajectory Extractor Version 1.0. Centre for
7 Transport Studies. Imperial College, London, UK. 2008.
- 8 21. Kusuma, A., Liu, R., Choudhury, C. and Montgomery, F. Analysis of the Driving
9 Behaviour at Weaving Section using Multiple Traffic Surveillance Data. Transportation
10 Research Procedia, Vol. 3, 2008, pp.51-59.
- 11 22. Halkias, J., and Colyar, J. NGSIM Program. Interstate 80 Freeway Dataset. Fact Sheet.
12 U.S. Department of Transportation, Federal Highway Administration, 2006, Available
13 on-line at: <http://www.fhwa.dot.gov/publications/research/operations/06137/06137.pdf>,
14 [Assessed Jul. 8, 2015.](#)
- 15 23. Papadimitriou, S. Investigating the Transferability of Car-Following Models between
16 Driving Simulator and Real- Life Traffic. MSc thesis, University of Leeds, Institute for
17 Transport Studies, Leeds, UK, 2015.
- 18 24. Choudhury, C., Ramanujam, V., and Ben-Akiva, M.E. Modeling Acceleration Decisions
19 for Freeway Merges. In Transportation Research Record: Journal of the Transportation
20 Research Board, No. 2124, Transportation Research Board of the National Academies,
21 Washington, D.C., 2009, pp.45-57.
- 22 25. Ahmed, K.I. Modeling Drivers' Acceleration and Lane Changing Behavior. Ph.D. thesis,
23 Massachusetts Institute of Technology, Boston, USA, 1999.
- 24 26. Subramanian, H. Estimation of Car-following Models. Ph.D. thesis, Massachusetts
25 Institute of Technology, Boston, USA, 1996.
- 26 27. Gazis, D.C., Herman, R., and Rothery, R.W. Nonlinear Follow-The-Leader Models of
27 Traffic Flow. Operations Research, Vol. 9, No. 4, 1961 pp. 545-567.
- 28 28. Sikder, S., Pinjari, A. R., Srinivasan, S., and Nowrouzian, R. Spatial Transferability of
29 Travel Forecasting Models: A Review and Synthesis. International Journal of Advances in
30 Engineering Sciences and Applied Mathematics, Vol. 5, No. 2-3, 2013, pp. 104-128.
- 31 29. OX Metrics Software. Timberlake Consultants Ltd. Version: 6.2. 2012. Available on-line
32 at: <http://www.oxmetrics.net/pages/software.html>, [Assessed April 9, 2015.](#)
- 33 30. Johansson, G., and Rumar, K. Drivers' Brake Reaction Times. Human Factors: The
34 Journal of the Human Factors and Ergonomics Society, Vol. 13, No. 1, 1971, pp. 23-27.
- 35 31. Gipps, P. G. A Behavioural Car-Following Model for Computer Simulation. In
36 Transportation Research Record: Journal of the Transportation Research Board, Part B:
37 Methodological, Vol. 15, No. 2, Transportation Research Board of the National
38 Academies, Washington, D.C., 1981, pp. 105-111.
- 39 32. Fambro, D.B., Koppa, R.J., Picha, D.L., and Fitzpatrick, K., 1988. Driver
40 Perception-Brake Response in Stopping Sight Distance Situations. In Transportation
41 Research Record: Journal of the Transportation Research Board, No. 1628,
42 Transportation Research Board of the National Academies, Washington, D.C., 1988, pp.
43 1-7.
- 44 33. Green, M. How long does it take to stop? Methodological Analysis of Driver
45 Perception-Brake Times. Journal of Transportation Human Factors 2, Vol. 3, 2000, pp.
46 195–216.

- 1 34. Summala, H. Brake Reaction Times and Driver Behavior Analysis. *Journal of*
2 *Transportation Human Factors* 2, Vol. 3, 2000, pp. 217-226.
- 3 35. Taieb-Maimon, M., and Shinar, D. Minimum and Comfortable Driving Headways: Reality
4 Versus Perception. *Journal of Transportation Human Factors* 2, Vol. 43, No. 1, 2001, pp.
5 159-172.
- 6 36. Brunson, S.J., Kyle, E.M., Phamdo, N.C., and Preziotti, G.R. Alert Algorithm Development
7 Program: NHTSA Rear-end Collision Alert Algorithm. DOT HS 809- 526, Final Report,
8 The John Hopkins University in Cooperation with the NHTSA and General Motors
9 Corporation, 2002.
- 10 37. Yang, X., Liu, J., Vaidya, N.F., and Zhao, F. A Vehicle-to-Vehicle Communication
11 Protocol for Cooperative Collision Warning. *Proceeding of the First Annual International*
12 *Conference on Mobile and Ubiquitous Systems: Networking and Services*, 2004.
13 *MOBIQUITOUS 2004. IEEE*, 2004, pp. 114–123.
- 14 38. Ranjitkar, P., Suzuki, H., and Nakatsuji, T. Microscopic Traffic Data with Real-Time
15 Kinematic Global Positioning System. *Proceeding of Annual Meeting of Infrastructure*
16 *Planning and Management*, Japan Society of Civil Engineer, Miyazaki, Preprint CD-ROM,
17 Dec., 2005.
- 18 39. Magister, T., Krulec, R., Batista, M., and Bogdanovic, L. The Driver Reaction Time
19 Measurement Experiences. *Proceedings of Innovative Automotive Technology (IAT'05)*
20 *Conference*, Bled. 2005.
- 21 40. Bilban, M., Vojvoda, A., and Jerman, J. Age Affects Drivers' Response Times. *Collegium*
22 *Antropologicum*, Vol. 33, No. 2, 2009, pp. 467-471.
- 23 41. Toledo, T., Koutsopoulos, H. N., and Ben-Akiva, M. Integrated Driving Behavior
24 Modeling. In *Transportation Research Record: Journal of the Transportation Research*
25 *Board, Part C: Emerging Technologies*, Vol. 15, No. 2, 2007, pp. 96-112.
- 26 42. Dey, S.S., and Fricker, J.D. Bayesian Updating of Trip Generation Data: Combining
27 National Trip Generation Rates with Local Data. *Transportation*, Vol. 21, No. 4, 1994, pp.
28 393.
- 29 43. Ben-Akiva, M., Bradley, M., Morikawa, T., Benjamin, J., Novak, T., Oppewal, H., and
30 Rao, V. Combining Revealed and Stated Preferences Data. *Marketing Letters*, Vol. 5, No.
31 4, 1994, pp. 335-349.
- 32 44. Ben-Akiva, M., and Morikawa, T. Estimation of Travel Demand Models from Multiple
33 Data Sources. *Proceedings of the International Symposium on Transportation and Traffic*
34 *Theory*, 11th, 1990, Yokohama, Japan.