



UNIVERSITY OF LEEDS

This is a repository copy of *Extensive Lower Cretaceous (Albian) methane seepage on Ellef Ringnes Island, Canadian High Arctic.*

White Rose Research Online URL for this paper:
<http://eprints.whiterose.ac.uk/112175/>

Version: Supplemental Material

Article:

Williscroft, K, Grasby, SE, Beauchamp, B et al. (5 more authors) (2017) Extensive Lower Cretaceous (Albian) methane seepage on Ellef Ringnes Island, Canadian High Arctic. Geological Society of America Bulletin, 129 (7-8). pp. 788-805. ISSN 0016-7606

<https://doi.org/10.1130/B31601.1>

© 2017 Geological Society of America. This is an author produced version of a paper published in Geological Society of America Bulletin. Uploaded in accordance with the publisher's self-archiving policy.

Reuse

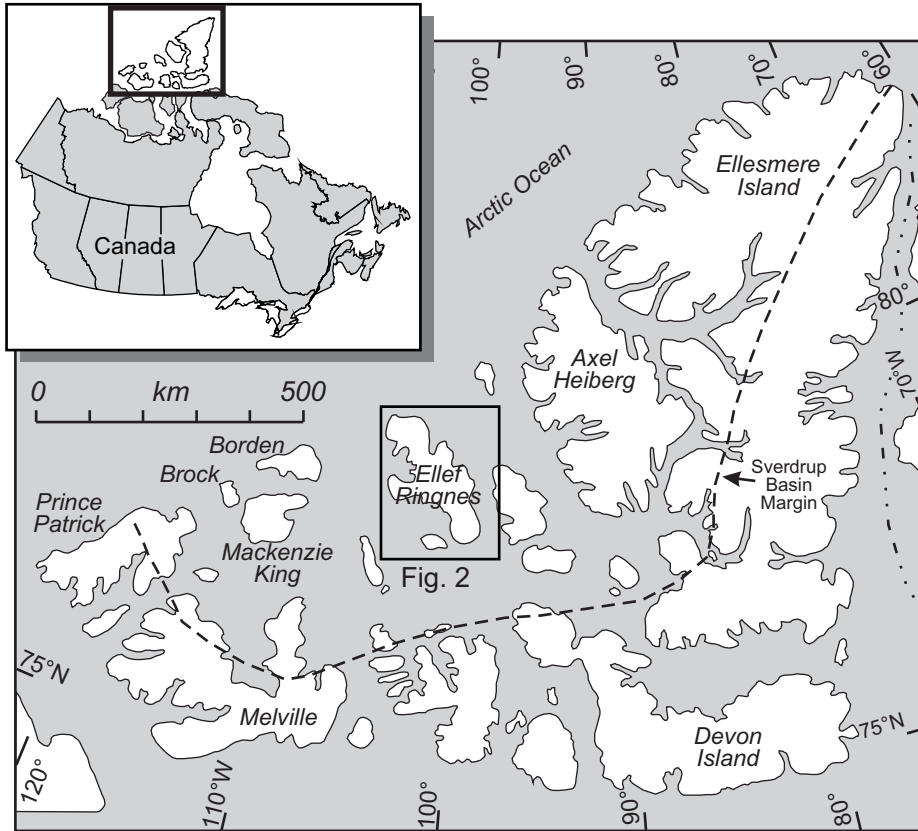
Unless indicated otherwise, fulltext items are protected by copyright with all rights reserved. The copyright exception in section 29 of the Copyright, Designs and Patents Act 1988 allows the making of a single copy solely for the purpose of non-commercial research or private study within the limits of fair dealing. The publisher or other rights-holder may allow further reproduction and re-use of this version - refer to the White Rose Research Online record for this item. Where records identify the publisher as the copyright holder, users can verify any specific terms of use on the publisher's website.

Takedown

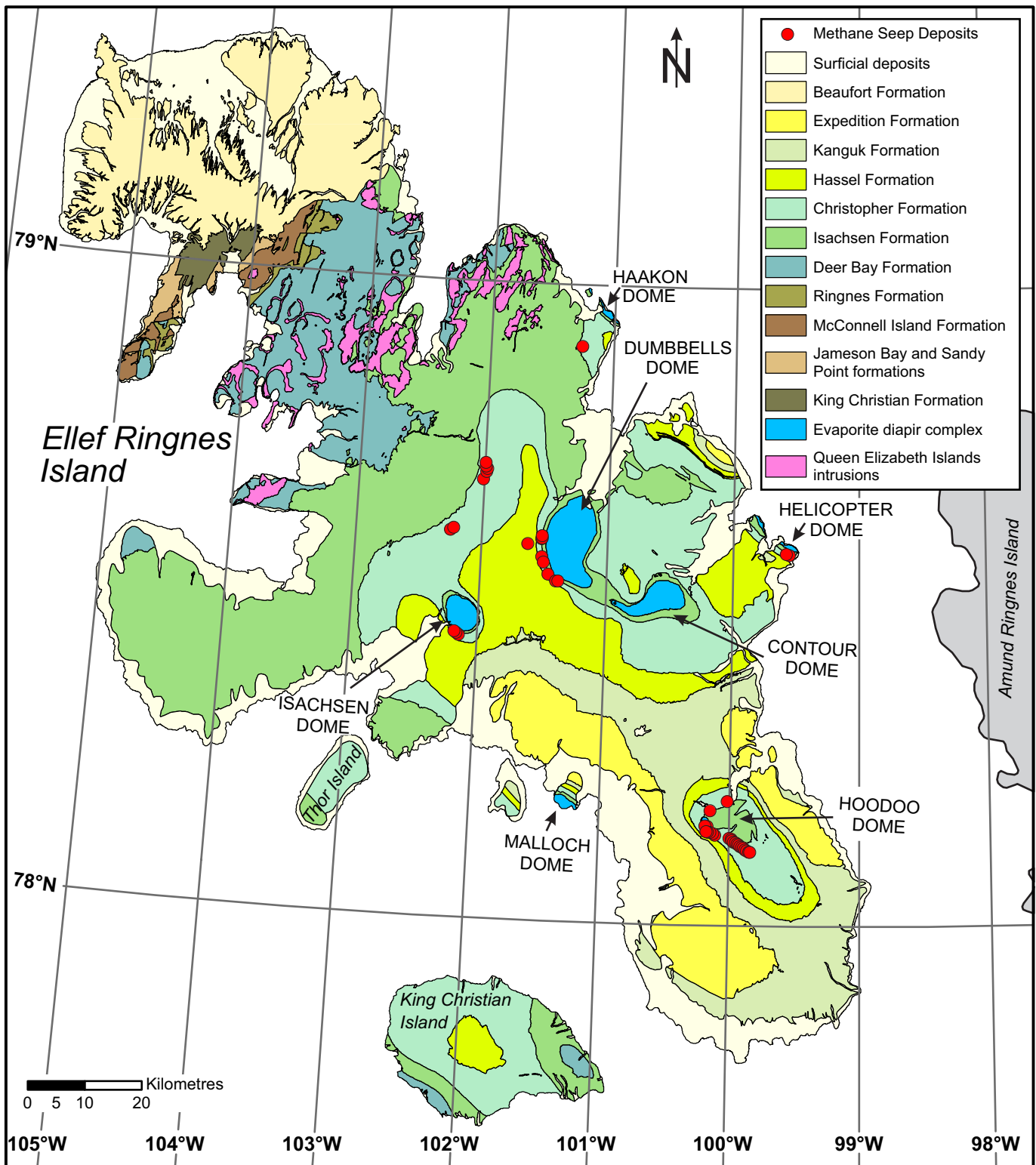
If you consider content in White Rose Research Online to be in breach of UK law, please notify us by emailing eprints@whiterose.ac.uk including the URL of the record and the reason for the withdrawal request.



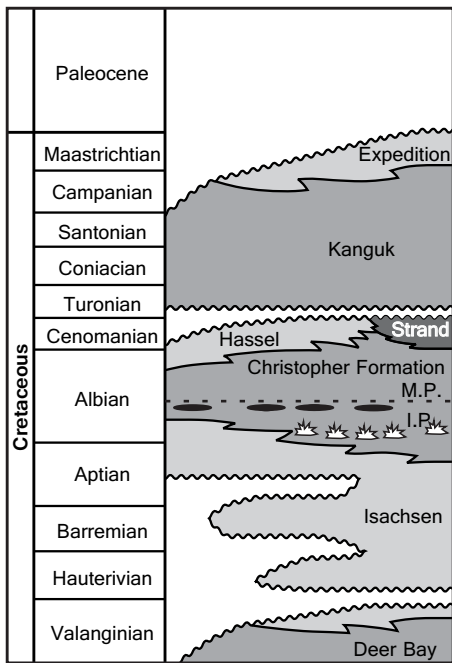
eprints@whiterose.ac.uk
<https://eprints.whiterose.ac.uk/>

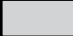







Williscroft et al. Figure 1

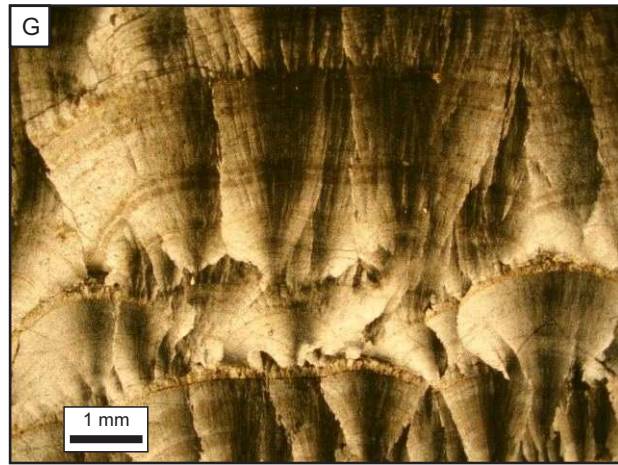
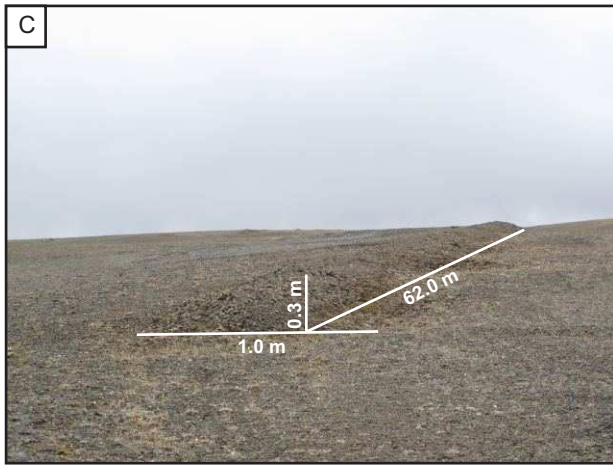
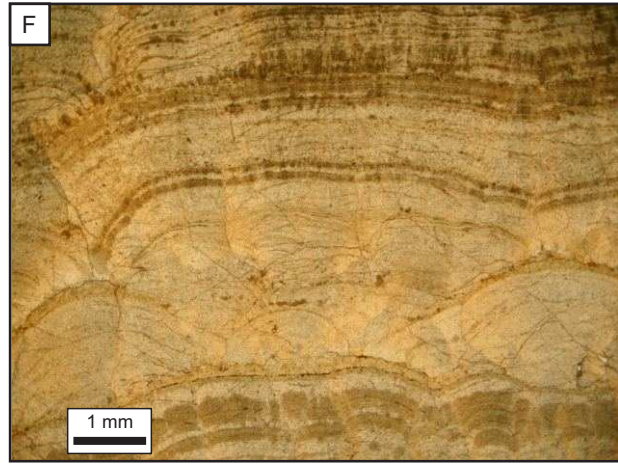
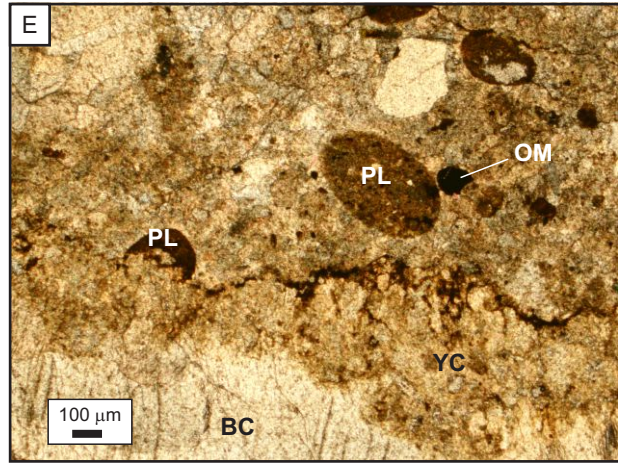
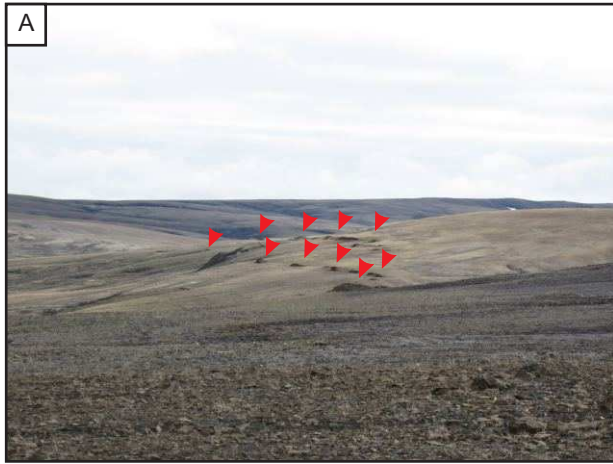


Williscroft et al. Figure 2

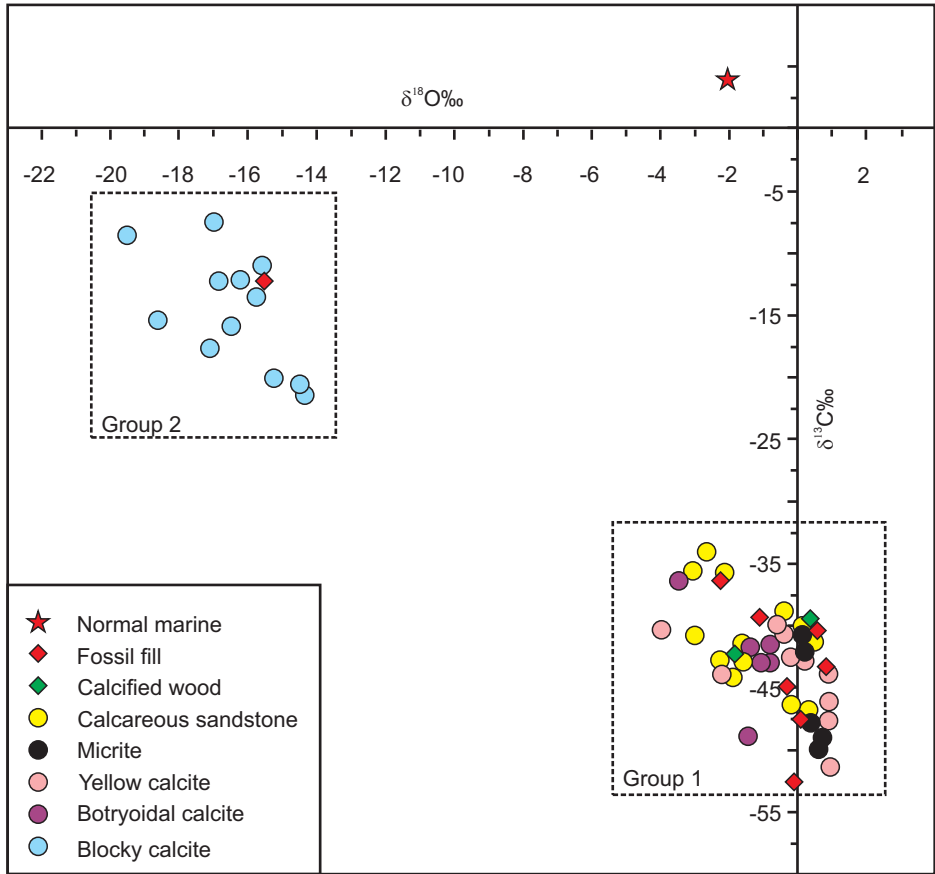


-  SANDSTONE DOMINANT
-  SHALE-SILTSTONE DOMINANT
-  BASALT DOMINANT
-  METHANE SEEP CARBONATES
-  GLENDONITES
-  MARKER BED sandstone
- I.P. = Invincible Point Member
- M.P. = Macdougall Point Member

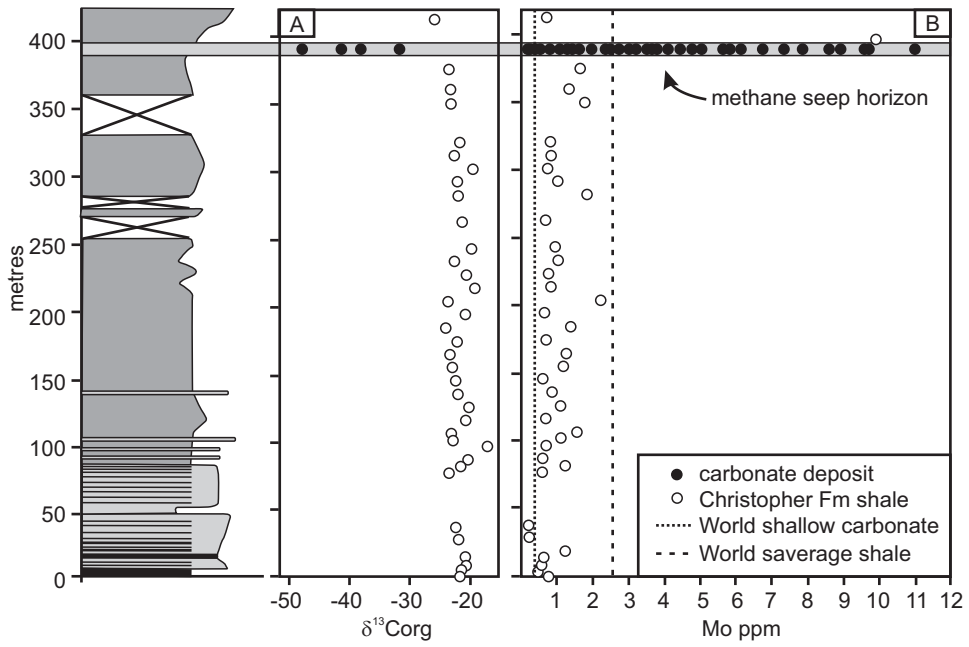
Williscroft et al. Figure 3



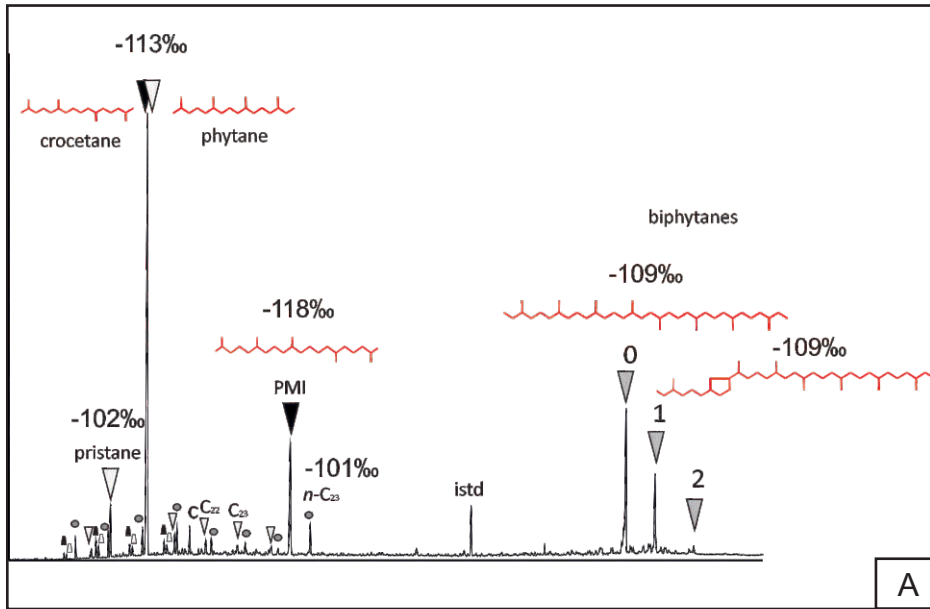
Williscroft et al. Figure 4



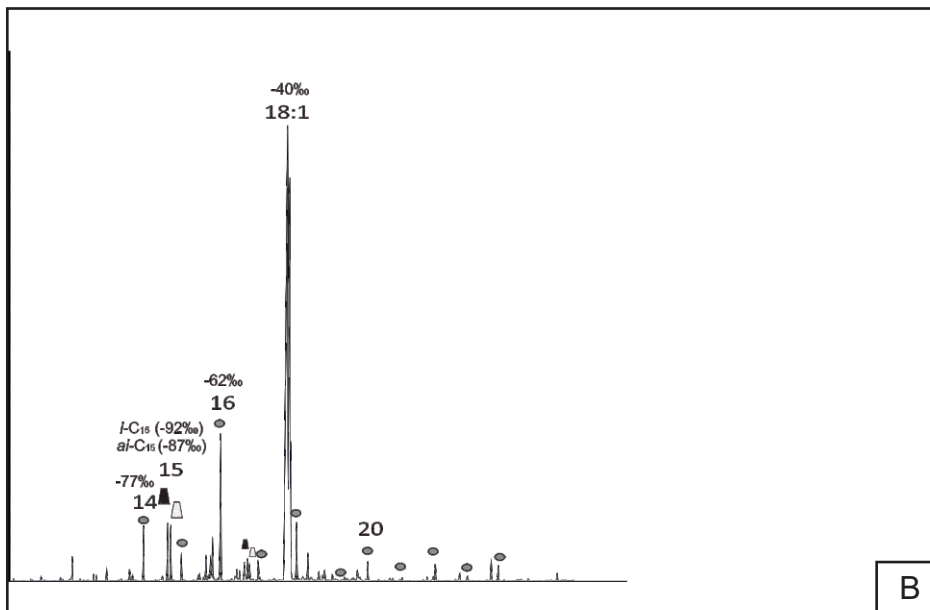
Williscroft et al. Figure 5



Williscroft et al. Figure 6

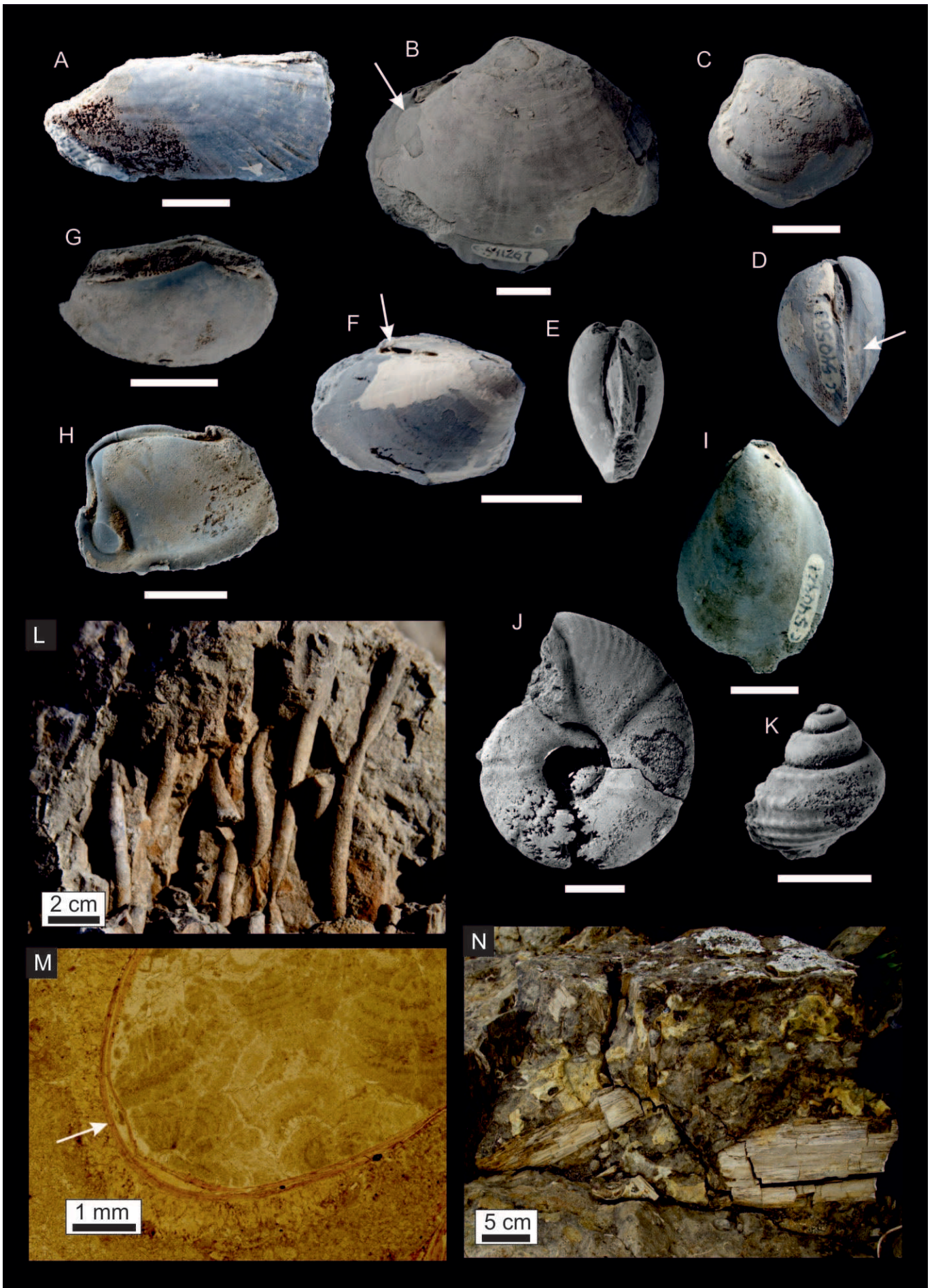


A



B

Williscroft et al. Figure 7



Williscroft et al. Figure 8