

This is a repository copy of *A new species in the tree genus Polyceratocarpus (Annonaceae) from the Udzungwa Mountains of Tanzania.*

White Rose Research Online URL for this paper:

<https://eprints.whiterose.ac.uk/103646/>

Version: Published Version

Article:

Marshall, Andrew R. orcid.org/0000-0003-4877-1018, Couvreur, Thomas L P, Summers, Abigail L. et al. (5 more authors) (2016) A new species in the tree genus *Polyceratocarpus* (Annonaceae) from the Udzungwa Mountains of Tanzania. *PhytoKeys*. pp. 63-76. ISSN 1314-2003

<https://doi.org/10.3897/phytokeys.63.6262>

Reuse

This article is distributed under the terms of the Creative Commons Attribution (CC BY) licence. This licence allows you to distribute, remix, tweak, and build upon the work, even commercially, as long as you credit the authors for the original work. More information and the full terms of the licence here:

<https://creativecommons.org/licenses/>

Takedown

If you consider content in White Rose Research Online to be in breach of UK law, please notify us by emailing eprints@whiterose.ac.uk including the URL of the record and the reason for the withdrawal request.

A new species in the tree genus *Polyceratocarpus* (Annonaceae) from the Udzungwa Mountains of Tanzania

Andrew R. Marshall^{1,2}, Thomas L.P. Couvreur^{4,5,6}, Abigail L. Summers^{1,2,3},
Nicolas J. Deere^{1,7}, W.R. Quentin Luke⁸, Henry J. Ndangalasi⁹,
Sue Sparrow³, David M. Johnson¹⁰

1 CIRCLE, Environment Department, University of York, York, UK **2** Flamingo Land Ltd., Kirby Misperton, North Yorkshire, UK **3** Biology Department, University of York, York, UK **4** Institut de Recherche pour le Développement, UMR-DIADE, BP 64501, F-34394 Montpellier cedex 5, France **5** Université de Yaoundé I, Ecole Normale Supérieure, Département des Sciences Biologiques, Laboratoire de Botanique systématique et d'Ecologie, B.P. 047, Yaoundé, Cameroon **6** Netherlands Centre for Biodiversity Naturalis (section NHN), Biosystematics Group, Wageningen University, the Netherlands **7** Durrell Institute of Conservation and Ecology, School of Anthropology and Conservation, University of Kent, Canterbury, UK **8** East African Herbarium, National Museums of Kenya, Nairobi, Kenya **9** Department of Botany, University of Dar es Salaam, Dar es Salaam, Tanzania **10** Department of Botany & Microbiology, Ohio Wesleyan University, Delaware, Ohio 43015 USA

Corresponding author: Andrew R. Marshall (andy.marshall@york.ac.uk)

Academic editor: M.A. Jaramillo | Received 30 October 2014 | Accepted 14 May 2015 | Published 1 June 2016

Citation: Marshall AR, Couvreur TLP, Summers AL, Deere NJ, Luke WRQ, Ndangalasi HJ, Sparrow S, Johnson DM (2016) A new species in the tree genus *Polyceratocarpus* (Annonaceae) from the Udzungwa Mountains of Tanzania. *PhytoKeys* 63: 63–76. doi: 10.3897/phytokeys.63.6262

Abstract

Polyceratocarpus askhambryan-iringae, an endemic tree species of Annonaceae from the Udzungwa Mountains of Tanzania, is described and illustrated. The new species is identified as a member of the genus *Polyceratocarpus* by the combination of staminate and bisexual flowers, axillary inflorescences, subequal outer and inner petals, and multi-seeded monocarps with pitted seeds. From *P. scheffleri*, with which it has previously been confused, it differs in the longer pedicels, smaller and thinner petals, shorter bracts, and by generally smaller, less curved monocarps that have a clear stipe and usually have fewer seeds. Because *P. askhambryan-iringae* has a restricted extent of occurrence, area of occupancy, and ongoing degradation of its forest habitat, we recommend classification of it as Endangered (EN) on the IUCN Red List.

Keywords

East Africa, Eastern Arc, endemism, Ndundulu, *Polyceratocarpus*

Introduction

The Eastern Arc Mountains of Kenya and Tanzania are well known for their high levels of biodiversity and endemism across many plant and animal groups (Lovett and Wasser 1993, Myers et al. 2000, Newmark 2002, Burgess et al. 2007, Dawson and Gereau 2010). The 13 mountain blocs making up the chain are somewhat isolated from one another, and each block exhibits its own unique suite of species. Many of the forests occupying these mountains are under threat from expanding agriculture and human population increase: an estimated 2.79 Mha of forest was lost between 1908 and 2000 (Willcock et al. 2016), with just 10% of the Eastern Arc Mountains still forested (Platts et al. 2011). These development pressures have added urgency to the inventory of the unique biota of this region.

Within the Eastern Arc chain, the 19,375 km² Udzungwa Mountains form the largest mountain bloc (Platts et al. 2011) and comprise the largest area of forest in the Eastern Arc Mountains, totaling around 1,600 km² (Marshall et al. 2010). The Udzungwa Mountains have enormous biodiversity value, with the highest plant species richness, the highest endemic vertebrate species richness, and the second highest endemic plant species richness of all mountain blocs in the region (Platts et al. 2010; Rovero et al. 2014). The distinctive character of Udzungwa biodiversity has been recently highlighted by high-profile mammal species discoveries including the kipunji monkey (*Rungwecebus kipunji*; Davenport et al. 2006) and Udzungwa elephant shrew (*Rhynchocyon udzungwensis*; Rovero et al. 2008).

Species of the flowering plant family Annonaceae are prominent among the understory trees and woody climbers of the Eastern Arc Mountains. In these mountains, there are 50 known Annonaceae species, 16 of which are endemic, including 12 out of 127 reported endemic tree species (R.E. Gereau, unpubl. data).

The genus *Polyceratocarpus* Engl. & Diels (Annonaceae subfamily Malmeoideae, tribe Piptostigmateae, Chatrou et al. 2012) is distinguishable from other African genera of the family by the combination of a tree habit, percurrent tertiary veins of the leaves, axillary (sometimes cauliflorous) inflorescences, occurrence of both staminate and bisexual flowers, petals of the outer and inner whorls roughly equal in size and shape, numerous monocarps with multiple seeds arranged in a single row, and pitted seeds with spiniform ruminations (Couvreur et al. 2009, Couvreur et al. 2012). Engler and Diels (1900) published the genus based on *P. scheffleri* Engler & Diels, collected in the Usambara Mountains. Since that time seven additional species have been added to the genus, all from western and central Africa.

Over the last 30 years a number of *Polyceratocarpus* specimens have been collected from the Udzungwa Mountains to the south and west of the range of *P. scheffleri*. It has become clear that these specimens differ consistently from *P. scheffleri* and other congeners by a combination of vegetative, floral, and fruit characters, and they are described here as a new species.

Taxonomic treatment

Polyceratocarpus askhambryan-iringae A.R. Marshall & D.M. Johnson, sp. nov.

urn:lsid:ipni.org:names:77155232-1

Figs 1–3

Diagnosis. This species may be distinguished from other species of *Polyceratocarpus* by the combination of glabrous non-glaucous leaves with finely reticulate to weakly scalariform tertiary venation, pedicels 15–22 mm long, broadly ovoid buds, chartaceous petals 10–17 mm long, 5 to 18 carpels/monocarps, and relatively large torulose monocarps.

Type. *Marshall 2117* (holotype K; isotypes DSM, MO, NHT), Tanzania, Iringa Region: Ndundulu Forest, Kilombero Nature Reserve, Udzungwa Mountains, 07°48'S, 36°31'E (WGS84), 1490 m, 30 May 2011.

Description. Monopodial *tree* to 20 m tall, 4.0–25.4 cm diam.; bark smooth, sparsely lenticellate, often with weak horizontal striations and pits on large trees, grey-brown; branches spirally arranged on trunk, branching from half to two fifths of the height of the main stem, perpendicular but sinuous and drooping slightly; twigs longitudinally rugulose, inconsistently marked with small but prominent lenticels, glabrous, brown. *Leaves:* petiole 4–9 mm long, 1.6–3.3 mm thick, roughened, black, glabrous; lamina narrowly to broadly elliptic-oblong to oblanceolate, or rarely obovate, (5.0-)9.0–25.7 by (3.7-)4.9–8.6(-11.6) cm, chartaceous to coriaceous, greenish gray in sicco, glabrous on both surfaces, base rounded and minutely subcordate, apex acuminate with the acumen 12–20 mm long or occasionally obtuse, midvein plane to slightly impressed above, raised below, secondary veins 9 to 17 per side, diverging at 45–60° from midrib, eucamptodromous to weakly brochidodromous, slightly raised to slightly impressed above, raised below, tertiary veins finely reticulate to somewhat scalariform, indistinct to slightly raised above, raised and conspicuous below. *Inflorescences* 1- or 2-flowered, axillary or occasionally ramiflorous, forming tubercles on leafless growth; pedicels 15–29 mm long 1–3 mm diam., finely appressed-puberulent, bearing a bract 0.8–1 mm long 1/4–2/5 of the distance above pedicel base. Flowers bisexual or staminate, buds broadly ovoid; sepals 3, valvate, crescent-shaped, 2–3.5 mm long, partially connate at the base so that as corolla expands the calyx becomes discoid to triangular with diameter of 7–8 mm, appressed-puberulent abaxially; petals in two whorls of 3, pale yellow in vivo; outer petals occasionally tinged pink on abaxial surface in vivo, valvate, spreading horizontally and recurving at anthesis, narrowly elliptic to elliptic or oblong-elliptic, 10–16 mm long by (5-)8–11 mm wide, coriaceous, apex obtuse, sparsely pubescent adaxially, ferruginous appressed-puberulent but becoming glabrate and verrucose abaxially; inner petals sometimes with a pale brownish-yellow median stripe abaxially, valvate, erect at anthesis with the apices recurved, narrowly elliptic-lanceolate, elliptic, or elliptic-oblanceolate, 11–17 mm long × 5–7 mm wide, coriaceous, external surface marked by a broad flattened ridge that narrows from base to apex, glabrous adaxially, appressed-puberulent with

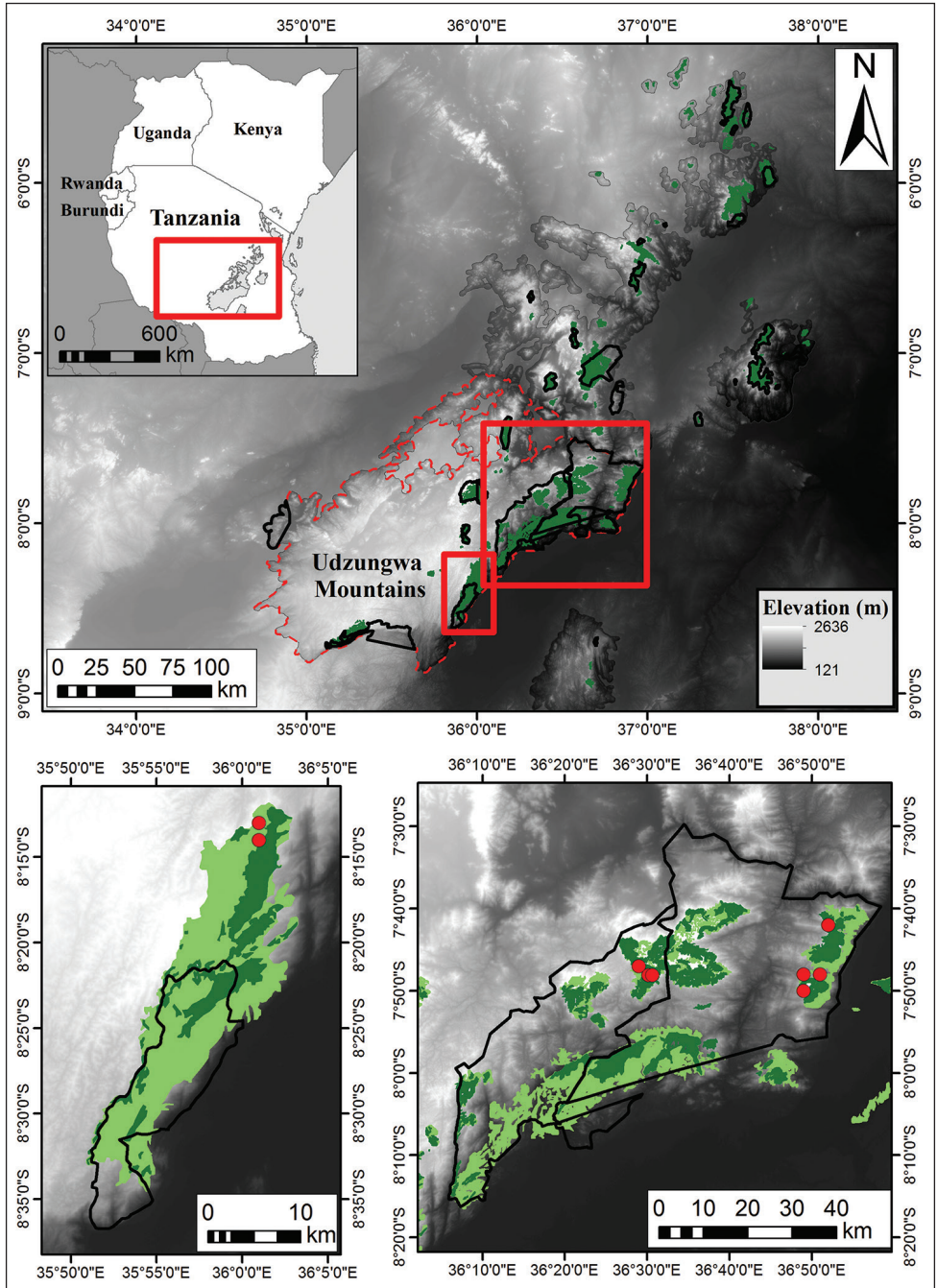


Figure 1. Known distribution of *Polyceratocarpus askhambryan-iringae* in the Eastern Arc Mountains (EAM). EAM boundary and forest cover (green) derived from Platts et al. (2011). Black boundaries within EAM boundary show protected areas. Pale green areas in the lower maps show degraded forest with canopy <10%.

trichomes densest along ridge and at apex abaxially, verrucose on both surfaces, apex acute; stamens ca. 200, 2.0–2.8 mm long, clavate, apex of connective obliquely truncate, pale brown with orange apex, glabrous?; carpels 5 to 18, oblong, 2.9–4.0(–6.0) mm long by 0.9–1.1(–2.3) mm wide, densely pale brown/ferruginous-puberulous; stigma bilobed, capitate, 1 mm in diam., glabrous, ovules ca. 10, uniseriate; torus subglobose to broadly pyriform to obovate, 4.4–4.9 mm long by 2.6–5.4 mm diam., 3–8 mm diam. at base. Pedicel of fruit 20–44 mm long by 3–7 mm diam., weakly longitudinally rugulose, glabrate; torus of fruit ellipsoid to broadly pyriform, 7–15 mm diam. × 8–12 mm long, grey-brown. *Monocarps* up to 18 per fruit, green (rarely with orange or vinaceous tinge) in vivo, dark brown when dried, weakly (to strongly) recurved-falciform, (1.9) 6.0–8.6 cm by 0.7–2.2 cm, torulose, minutely verrucose, glabrate or with a few scattered hairs, base sub-sessile or short-stipitate, stipe 1–11 mm long, 2–6 mm thick, apex rounded or sometimes short-beaked. *Seeds* 1–15 per monocarp, 15 mm long by 13 mm wide by 10 mm thick, arranged in a single [or two irregular?] rows, flattened-ellipsoid, pitted, with spiniform ruminations (fig. 3) and raphe/antiraphe sunken in a circumferential groove.

Distribution. *Polyceratocarpus askhambryan-iringae* is endemic to the Udzungwa Mountains of Tanzania. It is known from Mwanihana Forest in the Udzungwa Mountains National Park, Ndundulu Forest in the Kilombero Nature Reserve, and the Uzungwa Scarp Forest Reserve (Fig. 1).

Habitat and ecology. Inhabits montane forest on brown sandy loam soils (pH range 4–5 measured in Ndundulu Forest). Mean annual rainfall of collection localities approximately 1500–2000 mm/yr (Marshall, Ndangalasi, unpubl. data). Thirty-eight mature individuals were found mostly on slopes or ridge-tops at elevations 1090–1540m. Mature flowers were collected in May, November, and December, fruits in February and May–October.

Associated taxa recorded with *Polyceratocarpus askhambryan-iringae* include the following: **(1) Ndundulu Forest:** *Allanblackia ulugurensis* Engl., *Alsodeiopsis schumannii* Engl.; *Anisotes pubinervius* (T. Anderson) Heine, *Anthocleista grandiflora* Gilg, *Beilschmiedia kweo* (Mildbr.) Robyns & Wilczek, *Bertiera pauloi* Verdc., *Cassipourea gummiflua* Tul.; *Cassipourea malosana* Alston; *Chlorophytum brachystachyum* Baker, *Cleistanthus polystachyus* Hook.f. ex Planch., *Clerodendrum cephalanthum* Oliv., *Coffea* sp., *Cola greenwayi* Brenan, *Cola stelechantha* Brenan; *Craterispermum longipedunculatum* Verdc.; *Diospyros abyssinica* (Hiern) F. White, *Drypetes gerrardii* Hutch.; *Englerina* sp. nov.; *Garcinia buchananii* Baker; *Garcinia volkensii* Engl.; *Grewia mildbraedii* Burret; *Justicia rogersii* Vollesen; *Lasiodiscus usambarensis* Engl.; *Maytenus undata* (Thunb.) Blakelock; *Monodora globiflora* Couvreur; *Monanthotaxis schweinfurthii* Engl. & Diels; *Myrianthus holstii* Engl., *Ocotea usambarensis* Engl.; *Ochna holstii* Engl.; *Parinari excelsa* Sabine, *Peddiea fischeri* Engl., *Pavetta nitidissima* Bridson, *Plectranthus leptophyllus* (Baker) A.J. Paton, *Rinorea angustifolia* Baill. subsp. *ardisiiflora* (Oliv.) Grey-Wilson; *Rinorea* sp.; *Rytigynia lichenoxenos* (K. Schum.) Robyns subsp. *glabrituba* Verdc.; *Sclerochiton obtusisepalus* C.B. Clarke; *Solanecio epidendricus*

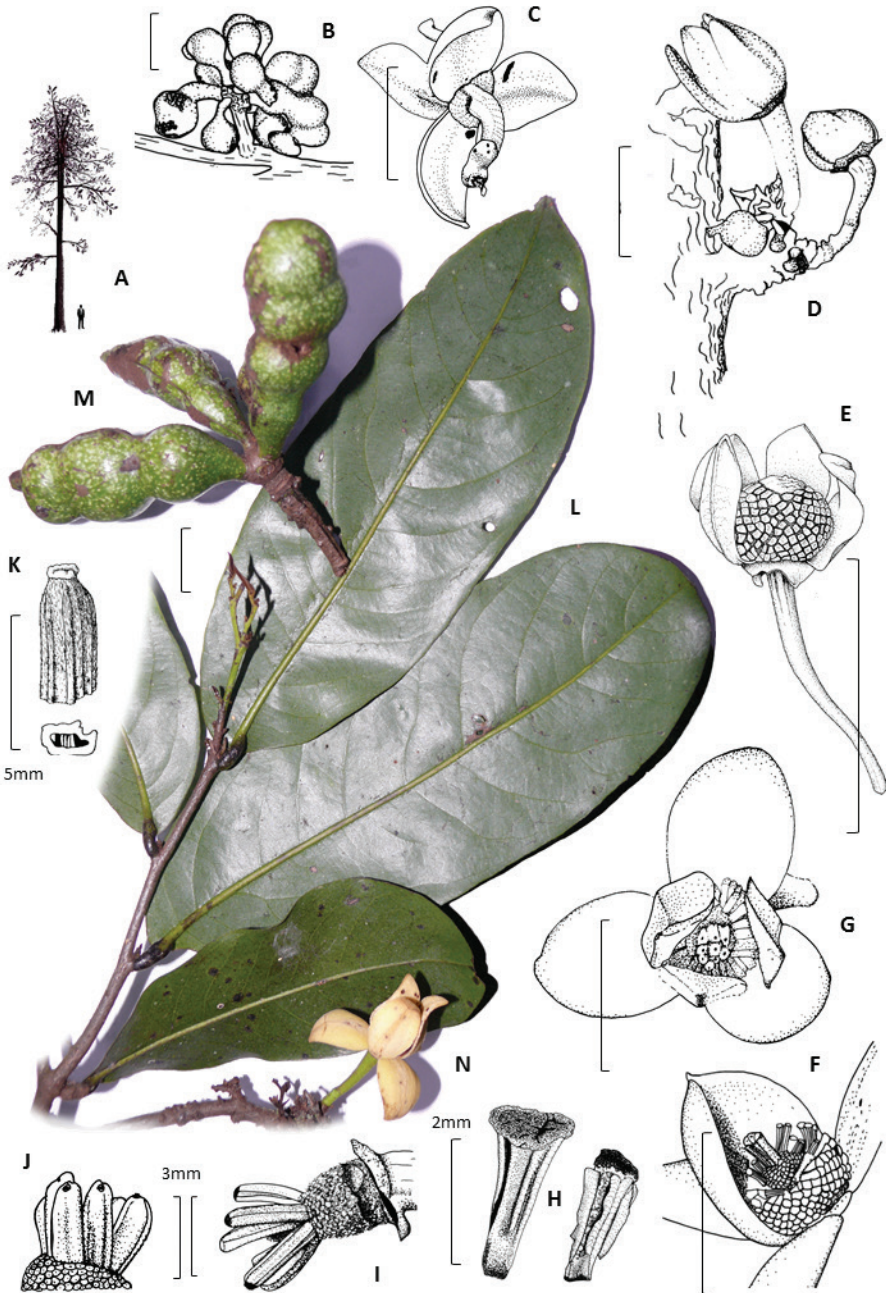


Figure 2. *Polyceratocarpus askhambryan-iringae* drawings of **A** tree architecture **B** fresh fruits **C** fresh flower below **D** fresh ramiflorous flower buds **E–F** dry and fresh bisexual flower (one petal removed) **G** fresh bisexual flower above **H** dried stamens **I–J** fresh and dry carpels lacking stigmas **K** dried carpel with stigma, plus photographs of **L** fresh leaves **M** fruit and **N** flower. Drawings by Sue Sparrow, **A** by Andrew Marshall, **E** and **K** by Andrew Brown, from the following specimens: Marshall 2070 (**B**); Marshall 2117 (**C–E** and **G–L**) and Luke 11279 (**F**). Scale bars: 20 mm unless stated.

(Mattf.) C. Jeffrey; *Strombosia scheffleri* Engl.; *Strychnos mellodora* S. Moore; *Strychnos mitis* S. Moore; *Strychnos* sp. nov; *Syzygium guineense* DC.; *Tabernaemontana stapfiana* Britten; *Tarenna pavettoides* (Harv.) Sim; *Thalictrum rhynchocarpum* Quart.-Dill. & A. Rich.; *Uvariopsis lovettiana* Couvreur & Q. Luke; *Vepris stolzii* I. Verd.; *Vernonia calvoana* Engl. subsp. *leucocalyx* (O. Hoffm.) C. Jeffrey; *Vernonia luhomeroensis* Q. Luke & Beentje; *Vernonia* sp. nr. *pteropoda* Oliv. & Hiern; *Warneckea* sp. nov.; *Xymalos monospora* Baill.; *Zanthoxylum paracanthum* (Mildbr.) Kokwaro; *Zehneria* sp. nr. *oligosperma* C. Jeffrey. (2) **Uzungwa Scarp Forest Reserve:** *Cassipourea gummiflua* Tul; *Cleistanthus polystachyus* Hook. f. ex Planch.; *Craterispermum longipedunculatum* Verdc.; *Diospyros uzungwaensis* Frim.-Möll. & H. J. Ndangalasi; *Drypetes gerrardii* Hutch.; *Lasiodiscus usambarensis* Engl.; *Psychotria megalopus* Verdc.; *Tabernaemontana stapfiana* Britten; *Tarenna uzungwaensis* Bridson. (3) **Mwanihana:** *Acalypha psilostachya* Hochst. ex A. Rich. var. *psilostachya*; *Anisotes pubinervius* (T. Anderson) Heine; *Caloncoba welwitschii* Gilg; *Chrysophyllum gorungosanum* Engl.; *Coffea mufindiensis* Hutch. ex Bridson subsp. *mufindiensis*; *Dorstenia* sp. aff. *tenuiradiata* Mildbr.; *Isoglossa lactea* Lindau ex Engl. subsp. *lactea*; *Isolona linearis* Couvreur; *Newtonia buchananii* (Baker) G. C. C. Gilbert & Boutique; *Ochna holstii* Engl.; *Parinari excelsa* Sabine; *Phyllopentas ulugurica* (Verdc.) Kårehed & B. Bremer; *Kedrostis* sp.; *Polystachya* sp. aff. *canaliculata* Summerh.; *Raphidiocystis chrysocoma* (Schumach.) C. Jeffrey; *Selaginella kraussiana* (Kunze) A. Braun; *Stellaria mannii* Hook. f.; *Tricalysia aciculiflora* Robbr.; *Uvariopsis lovettiana* Couvreur & Q. Luke; *Vepris nobilis* (Delile) Mziray; *Zanthoxylum paracanthum* (Mildbr.) Kokwaro.

Additional specimens examined. TANZANIA. Iringa Region, Kilolo District: east Uzungwa National Park, forest south of Mwanihana hill c. 2 km S of last camping site of Mwanihana trail, 1400 m, 07°48'S, 36°49'E, Couvreur 101 (DSM, OWU, WAG); Mwanihana Forest above Sanje village, 1220 m, no grid reference, Lovett 222 (K); Uzungwa Mountains National Park, 1200 m, 07°48'S, 36°49'E, Luke 7738 (EA, K); Uzungwa Mountains National Park, 1440 m, 07°42'S, 36°52'E, Luke 11279 (EA, NHT, MO, K); Ndundulu FR, Camp 589-Camp 590, 07°47'S, 36°29'E, 1440 m, Luke et al. 10366 (MO); Kilombero Nature Reserve, Ndundulu Forest, 1540 m, 07°48'S, 36°31'E (WGS84), Marshall 2036, 2070, (NHT, MO, K); Uzungwa Scarp Forest Reserve, Uluti, 1534 m, 08°14'S, 36°01'E, Ndangalasi HJN 392 (DSM, OWU); Uzungwa Scarp Forest Reserve, Ilutila, 1709 m, 08°13'S, 36°01'E, Ndangalasi 393 (DSM, OWU); Uzungwa, Kilombero FR, W of Ruaha River, 1700 m, Rogers & Hall 2300 (K); Mwanihana Forest above Sanje village, 1400 m, 07°50'S, 36°49'E, Thomas 3656 (MO); Mwanihana Forest above Sanje village, 1400 m, 07°50'S, 36°49'E, Thomas 3698 (MO, WAG). Morogoro Region, Kilombero District: Sonjo-Mwanihana trail, 1090 m, 07°48'S, 36°51'E, Luke 5051 (EA, K).

An additional specimen from Iringa Region (Nyambanitu Forest, Ede 65, K), may also represent this species but bears only an old fruit pedicel lacking monocarps. Further potential *Polyceratocarpus* collections from Iringa Region (Lulanda Forest Reserve: Gereau 2651, 2664, 2665, MO; Lovett 2256, MO, WAG; Luke & Luke 12779, EA & K), were identified as neither *P. askhambryan-iringae* nor *P. scheffleri*, while another

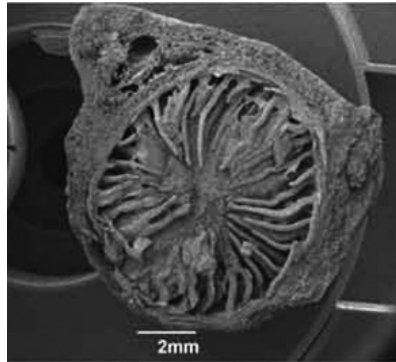


Figure 3. SEM photograph of *Polyceratocarpus askhambryan-iringae* dried seed cross-section, showing spini-form ruminations.

from Morogoro Region was not considered to be from this genus at all (Kimboza Forest Reserve: Parry 1816, TFD; cited Verdcourt 1971).

Additional field notes. *Slash* dry, slightly stringy, pale yellow (to pale peach), occasionally streaked yellow-brown, dark brown at outer edge formed by the colour of the inner bark, potpourri aroma. *Leaf* lamina dark green above, mid-green with greyish tinge below, turning greenish-grey when dried, new flush pinkish; petiole initially pale green in vivo, becoming roughened grey-brown with age; midrib yellow-green above and below in vivo. *Flower* buds broadly ovoid, green or pale brown-yellow with occasional pink tinge at apex in vivo; sepals yellowish-green in vivo.

Etymology. This new species of *Polyceratocarpus* was named by Askham Bryan College and Iringa International School as part of a rainforest education program.

Conservation status. Our IUCN Red List assessment for *P. askhambryan-iringae* was based on “area of occupancy” (AOO), “extent of occurrence” (EOO; IUCN 2012) and the level of threat. The 38 observed mature *P. askhambryan-iringae* stems were found at four collection localities, with only 112 km between the most distant individuals. The four collection localities represented three different levels of governmental protection, including Forest Reserve (Uzungwa Scarp), Nature Reserve (Kilombero, KNR; and also Uzungwa Scarp proposed status) and National Park (Udzungwa Mountains; UMNP), with only UMNP having the maximum level of protection under Tanzanian law (IUCN category II; Dudley 2008). At the time of survey, the greatest threat to *P. askhambryan-iringae* was widespread timber-felling observed in Uzungwa Scarp Forest Reserve. Conversely, threats to *P. askhambryan-iringae* in KNR and UMNP were much lower, both comprising only very occasional removal of pole-sized trees by villagers, and potential damage from an increasing elephant population (Marshall et al. 2012). KNR was further threatened by a lack of formal ranger patrols and rapid population expansion in the nearest villages. Given that the sources of threat were closely associated with the three protected areas, for the purpose of Red List assessment we considered three rather than four threat-defined “locations” (IUCN 2012). In calculating AOO, we used 10 km² grid cells so that the projected area was

not extrapolated far beyond the expected habitat tolerance of the species. We estimated an AOO of 300 km² and an EOO of 1,410 km², with EOO, AOO, habitat quality and the number of mature individuals, all presumed declining as a result of timber-felling in USFR. Given this continuing decline, plus an EOO of less than 5,000 km², an AOO of less than 500 km², and a population at no more than five locations, the species qualified firmly as endangered on the IUCN Red List (IUCN 2012), EN B1ab(i, ii,iii,v)+2ab(i,ii,iii,v). Within the Udzungwa Mountains, closed-canopy forest was not extensive at elevations suitable for *P. askhambryan-iringae*, and hence we expect that future expeditions will not expand the AOO or EOO of *P. askhambryan-iringae* above the IUCN endangered threshold. However, the Rubeho and Mahenge mountain blocs adjacent to Udzungwa were more poorly known, and may contain suitable habitat in which this species might also be found.

Discussion

A) Systematics

Polyceratocarpus askhambryan-iringae is similar to *P. scheffleri* and has previously been confused with it. As far as is known, however, *P. scheffleri* is confined to the Usambara Mountains and *P. askhambryan-iringae* to the Udzungwa Mountains; previous reports of *P. scheffleri* from the Udzungwa Mountains (e. g. Lovett et al. 1988, Couvreur et al. 2006, Eastern Arc Mountains & Coastal Forests CEPF Plant Assessment Project 2009) have been based on misidentifications of *P. askhambryan-iringae*. To facilitate separation of the two East African species, their differences are contrasted in the following key:

- 1 Lamina rounded and minutely subcordate at base, with tertiary veins reticulate to weakly scalariform; pedicel 15–29 mm long, bearing a bract 0.8–1 mm long; sepals connate only at base, distinct, crescent-shaped; petals 10–17 mm long; monocarps up to 18 per fruit, (1.9–) 6–8.6 cm long, weakly recurved-falciform, short-stipitate (1–11 × 2–6 mm); seeds per monocarp up to 15
.....*Polyceratocarpus askhambryan-iringae*
- Lamina cuneate to broadly cuneate at base, with tertiary veins distinctly scalariform; pedicel 10–16 mm long, bearing a bract 7–9 mm long; sepals connate into a disc with indistinguishable sepal lobes; petals 18–32 mm long; monocarps 5 to 33, 6–20 cm long, strongly curved, sessile; seeds per monocarp up to ca. 25*Polyceratocarpus scheffleri*

The genus *Polyceratocarpus* outside East Africa has a Guineo-Congolean distribution, with the other seven species scattered from Côte d'Ivoire to northern Angola and the Democratic Republic of the Congo. *Polyceratocarpus askhambryan-iringae* and *P. scheffleri* both differ from most of the more western species in having larger numbers of

carpels and large strongly torulose monocarps. The only other species with such a high number of carpels (18 to 20) is *Polyceratocarpus laurifolius* Paiva from northern Angola, but that species differs from *P. askhambryan-iringae* in having densely pubescent twigs, a distinctly cuneate base to the leaf, a larger bract on the pedicel, and larger sepals. *Polyceratocarpus laurifolius* also differs from *P. askhambryan-iringae* in having larger petals of the staminate flowers than of the bisexual ones (Paiva 1966); in *P. askhambryan-iringae* no petal dimorphism between staminate and bisexual flowers was seen.

Polyceratocarpus askhambryan-iringae (as “*Polyceratocarpus* sp.”) was one of four *Polyceratocarpus* species included in the phylogenetic analysis of Couvreur et al. (2009) focused on the phylogeny of several closely related African genera of Annonaceae. In this analysis *P. askhambryan-iringae* appeared as sister to the other three species of *Polyceratocarpus* sampled (*P. microtrichus* (Engl. & Diels) Ghesq. & Pellegr., *P. parviflorus* (Baker f.) Ghesq., and *P. pellegrinii* Le Thomas) forming a monophyletic group with strong bootstrap and posterior probability support. The other five species remain to be sampled. The genus itself, however, was nested within the western and central African genus *Piptostigma* Oliv., to which it is morphologically dissimilar, so additional sampling is needed.

B) Regional endemism and biodiversity

East Africa is an area of both high endemism and high diversity for Annonaceae, with 28 genera and 85 species known from Tanzania alone (Couvreur et al. 2006). In particular, the Eastern Arc Mountains form an area of high species endemism for East African Annonaceae. Furthermore, many Annonaceae genera represented in these mountains have main areas of diversity in the Guineo-Congolese region and are represented in the Eastern Arc Mountains by endemic taxa. In addition to *Polyceratocarpus*, the genera *Annickia* Setten & Maas, *Greenwayodendron* Verdc., *Isolona* Engl., *Monodora* Dunal, *Uvarioidendron* (Engl. & Diels) R.E. FR., and *Uvariopsis* Engl. all follow this pattern (Verdcourt 1971, 1986, Couvreur et al. 2006, Couvreur 2009, Couvreur and Luke 2010).

Polyceratocarpus askhambryan-iringae also adds to the growing list of species unique to the Udzungwa bloc, including various recently discovered plants (e.g. Luke and Beentje 2003; Knox et al. 2004). There are now 71 known endemic plant species from the Udzungwa Mountains (comprising 15 trees, including *P. askhambryan-iringae*); among the Eastern Arc Mountains this is second only to the Uluguru Mountains (86 endemic species [14 trees]; R.E. Gereau, unpubl. data). *P. askhambryan-iringae* is the second large tree ($\geq 20\text{m}$) and the third endemic Annonaceae species to be described from the Udzungwa Mountains over the last 20 years, following the respective discoveries of *Omphalocarpum strombocarpum* Y.B.Harv. & Lovett (Harvey and Lovett 1998), *Toussaintia patriciae* Q.Luke & Deroin (Deroin and Luke 2005) and *Monodora globiflora* Couvreur (Couvreur et al. 2006). Given further new species descriptions in preparation and the larger size of the Udzungwa Mountains, it is likely to be the most important Eastern Arc Mountain bloc for tree species endemism. More plant species

are known from the Udzungwa Mountains than other Eastern Arc Mountain blocs, and while this is partly due to increased survey effort over other blocs, recent projections by distribution models estimate that the number of endemic/threatened plant taxa will not be superseded following increased exploration of other blocs (Platts et al. 2010).

The four *P. askhambryan-iringae* localities are coextensive with other recent discoveries of rare and endemic Eastern Arc animals, e.g. the Critically Endangered endemic Sanje mangabey (*Cercocebus sanjei*; Mwanihana and Uzungwa Scarp), the Critically Endangered kipunji monkey (*Rungwecebus kipunji*; Ndundulu; also found on Rungwe Mountain), the endemic Udzungwa forest partridge (*Xenoperdix udzungwensis*; Ndundulu), the endemic rufous-winged sunbird (*Nectarinia rufipennis*; Mwanihana, Ndundulu and Uzungwa Scarp), the endemic Udzungwa elephant shrew (*Rhynchocyon udzungwensis*; Ndundulu and Mwanihana), further emphasizing the exceptional local biodiversity value. The exceptional biodiversity of these areas led to the incorporation of Mwanihana forest into the Udzungwa Mountains National Park in 1991, and later incorporation of Ndundulu forest into the Kilombero Nature Reserve in 2007 (Marshall et al. 2007).

The discovery of *P. askhambryan-iringae* further highlights the need for improved conservation of Uzungwa Scarp Forest Reserve, one of the most important forests in the region for primates and birds (Dinesen et al. 2001), where herpetofauna endemism has been estimated at eight times that of the Eastern Arc as a whole (Menegon, unpublished data). Uzungwa Scarp FR is home to the Kihansi spray toad (*Nectophrynoides asperginis*), which was extinct in the wild, but was successfully reintroduced in October 2012 following zoo conservation breeding (Channing et al. 2009; Gereau et al. 2014). We hope that our discovery of yet another new endemic will add weight to ongoing proposals for gazettelement of Uzungwa Scarp Forest Reserve as a Nature Reserve, the highest designation of protected area possible under the Tanzania Forestry Service.

Acknowledgements

Thanks to COSTECH and TAWIRI for permits. The collection expedition to Ndundulu Forest was primarily funded by Flamingo Land Ltd., through the Udzungwa Forest Project. Preliminary surveys of Ndundulu were funded by HMJ Design and Mazuri Foods Ltd., through the British and Irish Association of Zoos and Aquaria Mammal Working Group, and by the Wildlife Conservation Society. Collections from the Uzungwa Scarp Forest Reserve were funded by Danish International Development Agency (DANIDA) through the ENRECA Project at the Department of Botany, University of Dar es Salaam. Thanks to National Museums of Kenya staff especially John Kimeu, for herbarium support. Roy Gereau (Missouri Botanical Garden) is thanked for comments on the manuscript. Nancy Murray (Ohio Wesleyan University) for helpful comments on the manuscript. Phil Roberts (University of York) is thanked for administrating the production of illustrations, and Andrew Brown for producing two of the sketches. We also thank the many field assistants who helped with collections, and with expedition

logistics, especially Richard Mgata from Udekwa village, who climbed tall trees in pursuit of vital material for this description. TLPC thanks the Netherlands Organization for Scientific Research (NWO), Hugo de Vries Fonds and Air France-KLM for financial help in Tanzania in 2006. Frank Mbago is thanked for assistance while in the field with TLPC. We also thank the United Bank of Carbon for funding to develop a schools' rainforest education program around this species, which led to the chosen species name. And last but not least we thank all the participating schools, colleges, youth groups and people who helped the success of this program, particularly Katie Boswell, Amber Hall, Joshua Sammy, Sharon Sheppard and the First Sherburn Rainbows and Brownies.

References

- Burgess ND, Butynski TM, Cordeiro NJ, Doggart NH, Fjeldså J, Howell KM, Kilahama FB, Loader SP, Lovett JC, Mbilinyi B, Menegon M, Moyer DC, Nashanda E, Perkin A, Rovero F, Stanley WT, Stuart SN (2007) The biological importance of the Eastern Arc Mountains of Tanzania and Kenya. *Biological Conservation* 134: 209–231.
- Channing A, Howell K, Loader S, Menegon M, Poynton J (2009) *Nectophrynooides asperginis*. The IUCN Red List of Threatened Species. Version 2014.2. <http://www.iucnredlist.org> [Downloaded on 10 October 2014]
- Chatrou LW, Pirie MD, Erkens RHJ, Couvreur TLP, Neubig KM, Abbott JR, Mols JB, Maas JW, Saunders RMK, Chase MW (2012) A new subfamilial and tribal classification of the pantropical flowering plant family Annonaceae informed by molecular phylogenetics. *Botanical Journal of the Linnean Society* 169(1): 5–40. doi: 10.1111/j.1095-8339.2012.01235.x
- Couvreur TLP, Gereau RE, Wieringa JJ, Richardson JE (2006) Description of four new species of *Monodora* and *Isolona* (Annonaceae) from Tanzania and an overview of Tanzanian Annonaceae diversity. *Adansonia sér 3* 28(2): 242–266.
- Couvreur TLP (2009) Monograph of the syncarpous African genera *Isolona* and *Monodora* (Annonaceae). *Systematic Botany Monographs* 87: 1–150.
- Couvreur TLP, van der Ham RWJM, Mbele YM, Mbago FM, Johnson DM (2009) Molecular and morphological characterization of a new monotypic genus of Annonaceae, *Mwasumbia*, from Tanzania. *Systematic Botany* 34(2): 266–276. doi: 10.1600/036364409788606398
- Couvreur TLP, Luke WRQ (2010) A new species of *Uvariopsis* (Annonaceae), endemic to the Eastern Arc Mountains of Tanzania. *Blumea* 55(1): 68–72.
- Couvreur TLP, Mass PJM, Meinke S, Johnson DM, Keßler PJA (2012) Keys to the genera of Annonaceae. *Botanical Journal of the Linnean Society* 169(1): 74–83. doi: 10.1111/j.1095-8339.2012.01230.x
- Davenport TRB, Stanley WT, Sargis EJ, De Luca DW, Mpunga NE, Machaga SJ, Olson LE (2006) A new genus of African monkey, *Rungwecebus*: morphology, ecology, and molecular phylogenetics. *Science* 312: 1378–1381. doi: 10.1126/science.1125631
- Dawson SE, Gereau RE (2010) New species of *Aidia* and *Polysphaeria* (Rubiaceae) from East Africa. *Novon* 20(3): 256–264. doi: 10.3417/2009110

- Derooin T, Luke WRQ (2005) A new *Toussaintia* (Annonaceae) from Tanzania. *Journal of East African Natural History* 94: 165–174. doi: 10.2982/0012-8317(2005)94[165:ANTAFT]2.0.CO;2
- Dinesen L, Lehmberg T, Rahner MC, Fjeldså J (2001) Conservation priorities for the forests of the Udzungwa Mountains, Tanzania, based on primates, duikers and birds. *Biological Conservation* 99: 223–236. doi: 10.1016/S0006-3207(00)00218-4
- Dudley N (2008) *Guidelines for Applying Protected Area Management Categories*. IUCN, Gland. doi: 10.2305/IUCN.CH.2008.PAPS.2.en
- Eastern Arc Mountains & Coastal Forests CEPF Plant Assessment Project (2009) *Polyceratocarpus scheffleri*. The IUCN Red List of Threatened Species. <http://www.iucnredlist.org>
- Engler A, Diels L (1900) Übersicht über die bekannten Gattungen der Anonaceen und Beschreibung einiger neuen Gattungen dieser Familie aus dem tropischen Afrika. *Notizblatt des Königlichen botanischen Gartens und Museums zu Berlin* 23: 45–59. doi: 10.2307/3993968
- Harvey YB, Lovett JC (1998) A new species of *Omphalocarpum* (Sapotaceae) from eastern Tanzania. *Kew Bulletin* 54(1): 197–202. doi: 10.2307/4111038
- Gereau RE, Kariuki M, Ndag'ang'a PK, Werema C, Muoria P (2014) Biodiversity Status and Trends in the Eastern Arc Mountains and Coastal Forests of Kenya and Tanzania Region, 2008–2013. BirdLife International – Africa Partnership Secretariat, Nairobi, 80 pp. doi: 10.5962/bhl.title.96053
- IUCN (2012) *IUCN Red List Categories and Criteria: Version 3.1 (Second edition)*. IUCN, Gland, Switzerland and Cambridge.
- Knox EB, Luke WRQ, Thulin M (2004) A new giant *Lobelia* from the Eastern Arc Mountains, Tanzania. *Kew Bulletin* 59: 189–194. doi: 10.2307/4115849
- Lovett JC, Bridson DM, Thomas DW (1988) A preliminary list of the Moist Forest Angiosperm Flora of Mwanihana Forest. *Annals of the Missouri Botanical Garden* 75(3): 874–885. doi: 10.2307/2399376
- Lovett JC, Wasser SK (1993) *Biogeography and ecology of the rain forests of Eastern Africa*. Cambridge University Press, Cambridge. doi: 10.1017/CBO9780511895692
- Luke WRQ, Beentje HJ (2003) A New *Vernonia* (Compositae: Vernonieae) from the Udzungwa Mountains, Tanzania. *Kew Bulletin* 58: 977–980. doi: 10.2307/4111212
- Marshall AR, Aloyce Z, Mariki S, Jones T, Burgess N, Kilihama F, Massao J, Nashanda E, Sawe C, Rovero F, Watkin J (2007) Tanzania's second Nature Reserve: improving the conservation status of the Udzungwa Mountains? *Oryx* 41(4): 429–430.
- Marshall AR, Jørgensbye HIO, Rovero F, Platts PJ, White PCL, Lovett JC (2010) The species-area relationship and confounding variables in a threatened monkey community. *American Journal of Primatology* 72: 325–336.
- Marshall AR, Willcock S, Platts PJ, Lovett JC, Balmford A, Burgess ND, Latham JE, Munishi PKT, Salter R, Shirima DD, Lewis SL (2012) Measuring and modelling above-ground carbon and tree allometry along a tropical elevation gradient. *Biological Conservation* 154: 20–33. doi: 10.1016/j.biocon.2012.03.017
- Myers NRA, Mittermeier CG, de Fonseca GAB, Kent J (2000) Biodiversity hotspots for conservation priorities. *Nature* 403(6772): 853–858. doi: 10.1038/35002501

- Newmark WD (2002) Conserving biodiversity in East African forests: a study of the Eastern Arc Mountains. Springer, 1–205. doi: 10.1007/978-3-662-04872-6
- Paiva JAR (1966) Revisão das Annonaceae de Angola. *Memórias da Sociedade Broteriana* 19: 5–128.
- Platts PJ, Ahrends A, Gereau RE, McClean CJ, Lovett JC, Marshall AR, Pellikka PKE, Mulligan M, Fanning E, Marchant R (2010) Can distribution models help refine inventory-based estimates of conservation priority? A case study in the Eastern Arc forests of Tanzania and Kenya. *Diversity & Distributions* 16: 628–642. doi: 10.1111/j.1472-4642.2010.00668.x
- Platts PJ, Burgess ND, Gereau RE, Lovett JC, Marshall AR, McClean CJ, Pellikka PKE, Swetnam RD, Marchant R (2011) Delimiting tropical mountain ecoregions for conservation. *Environmental Conservation* 38(3): 312–324. doi: 10.1017/S0376892911000191
- Rovero F, Rathburn GB, Perkin A, Jones T, Ribble DO, Leonard C, Mwakisoma RR, Doggart N (2008) A new species of giant sengi or elephant-shrew (genus *Rhynchocyon*) highlights the exceptional biodiversity of the Udzungwa Mountains of Tanzania. *Journal of Zoology* 274: 126–133. doi: 10.1111/j.1469-7998.2007.00363.x
- Rovero F, Menegon M, Fjeldså, Collett L, Doggart N, Leonard C, Norton G, Owen N, Perkin A, Spitale D, Ahrends A, Burgess ND (2014) Targeted vertebrate surveys enhance the faunal importance and improve explanatory models within the Eastern Arc Mountains of Kenya and Tanzania. *Diversity and Distributions*. doi: 10.1111/ddi.12246
- Verdcourt B (1971) Annonaceae. In: Milne-Redhead E, Polhill RM (Eds) *Flora of Tropical East Africa*. Whitefriars Press, 1–132.
- Verdcourt B (1986) New taxa of East African Annonaceae. *Kew Bulletin* 41(2): 287–297. doi: 10.2307/4102932
- Willcock S, Phillips OL, Platts PJ, Swetnam RD, Balmford A, Burgess ND, Ahrends A, Bayliss J, Doggart N, Doody K, Fanning E, Green JMH, Hall J, Howell KM, Lovett JC, Marchant R, Marshall AR, Mbilinyi B, Munishi PKT, Owen N, Topp-Jørgensen JE, Lewis SL (2016) Land cover change and carbon emissions over 100 years in an African biodiversity hotspot. *Global Change Biology*. doi: 10.1111/gcb.13218 [in press]